



BRISBANE SKYTOWER

A U S T R A L I A





ARTIST IMPRESSION



WELCOME TO BRISBANE SKYTOWER.

Towering centre stage in the heart of Australia's most progressive and dynamic city, we are proud to introduce Brisbane Skytower, to Australia and the world.

Piercing the sky at a phenomenal 270 metres, it makes its debut as one of the tallest residential towers in Australia.

This is architecture on a truly grand and global scale. A symbol of Brisbane's rise as a contemporary, international new world city.

The views are exhilarating. Its towering heights are awe-inspiring. A fusion of bustling

city life, view-filled living spaces and five-star resort facilities in one iconic building, every day brings moments of wonder.

Outside, the tower will transform Brisbane's skyline. Inside, it bestows an extraordinary level of residential amenity.

From Australia's highest infinity pool at the tower's crown to its incredible recreation decks, life within Brisbane Skytower offers more than simply apartments in the sky. It gives its residents truly unforgettable and personalised living experiences.



Brisbane Skytower's grand entry welcomes you to the magnificent homes in the sky above. Here a lively new laneway links

A WORLD OF
GLAMOUR
AWAITS YOU.



ARTIST IMPRESSION

As exhilarating to live in as it is to see from afar, experience unprecedented tower living every bit as glamorous as the views. These luxurious and opulent spaces have the air of a five-star hotel.

Step inside and four supremely elegant lobbies create an exceptional introduction to your enchanting tower world.

With its one-of-a-kind design and heroic stature, Brisbane Skytower will amply reward those privileged enough to live in its sky-high homes.



ARTIST IMPRESSION

BRISBANE.
ASIA PACIFIC'S
NEW WORLD CITY.





A RISING METROPOLIS.

Dynamic. Enlivening. Charismatic. Brisbane has truly come of age as one of Australia's most vibrant, contemporary capital cities.

Home to more than 2.2 million people, it is the fastest growing city in Australia. The property market, its economy and its arts, entertainment, education and cultural offerings are booming as Brisbane's rising status is rapidly discovered by people from across the globe.

Blessed with a subtropical climate and seemingly endless sunshine, Brisbane is known as Australia's most liveable city. Soon, Brisbane Skytower will create a sensation as the city's most liveable and desirable address.

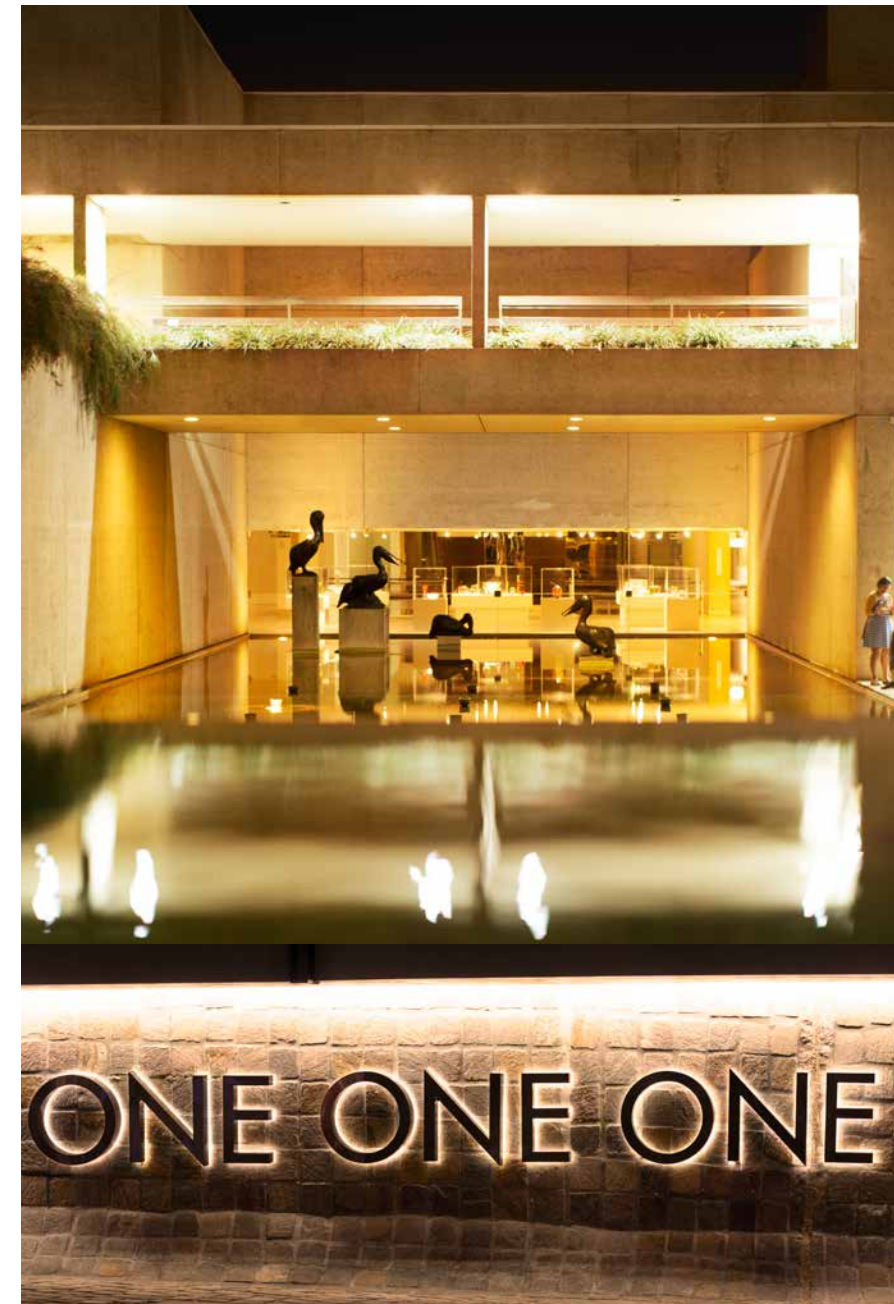
A CITY ON THE MOVE.

Get out and explore your new world city. Living well is as simple as stepping outside and enjoying the blend of world-class commerce, culture, leisure and nightlife.

Brisbane's CBD has reached new heights as a flurry of exceptional new restaurants, elegant laneway bars and cultural offerings create a rising metropolitan buzz.

Share in the many rewards of this city's thriving universities, its internationally recognised art precincts, its celebrated riverside dining and attractions, and its world-class transport network.

Already known as a city that's easy to get around, a future underground Bus and Train (BaT) metro station will soon offer enhanced cross-river travel within a few paces of your spectacular Brisbane Skytower home.





EXHIBITION &
CONVENTION CENTRE
SUNCORP STADIUM
SOUTH BRISBANE
WILLIAM JOLLY BRIDGE
SOUTH BANK TAFE &
GRIFFITH UNIVERSITY
KURILPA BRIDGE

VICTORIA BRIDGE

SOUTH BANK BEACH
AND PARKLANDS

ROMA STREET PARKLANDS

LEGAL PRECINCT

VICTORIA PARK
GOLF COURSE

SPRING HILL

QUEEN'S WHARF
CASINO PRECINCT

GOVERNMENT PRECINCT

ROYAL BRISBANE HOSPITAL

GOODWILL BRIDGE

BRISBANE SKYTOWER

BOTANIC GARDENS

GOLDEN TRIANGLE
BUSINESS DISTRICT

EAGLE STREET PIER

UNIVERSITY CAMPUS

NEW BRIDGE -
CBD TO KANGAROO PT
(COMPLETION 2017)

BRISBANE RIVERSTAGE

FORTITUDE VALLEY

STORY BRIDGE

MORETON BAY

KANGAROO POINT

THIS IS LIVING
ON A NEW LEVEL.



Soaring above and beyond, Brisbane Skytower's heavenly apartments affirm its status as Brisbane's most anticipated new landmark. Living here will take your breath away.



TAKE ME
HIGHER.



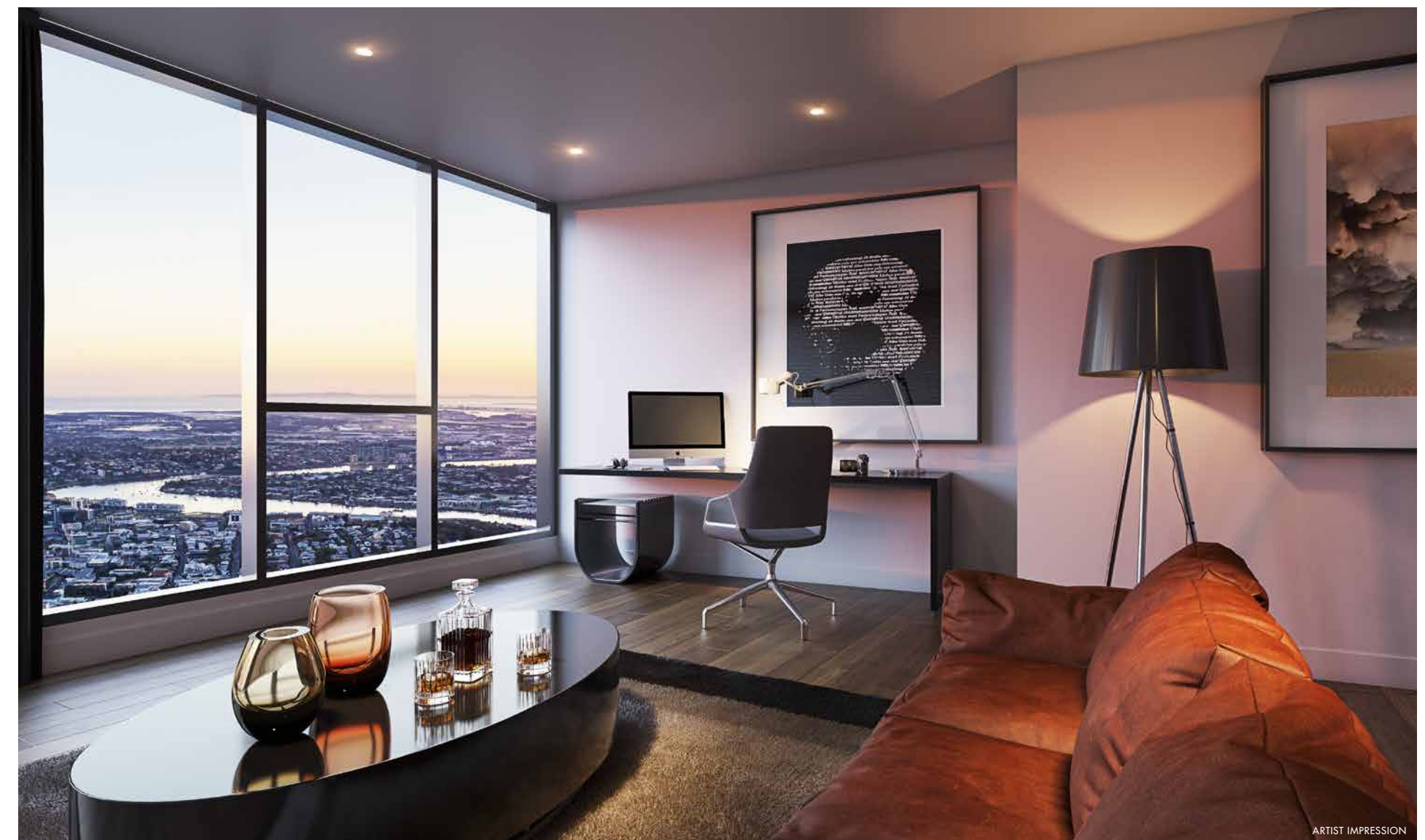
From skyscraped penthouses at the building's summit to a soaring selection of 1, 2 and 3 bedroom apartments, Brisbane Skytower offers unsurpassed living in the tallest residential tower ever to grace the City's skies.

Walls of glass frame astounding views as the tower's sculpted triangular form opens up remarkable wide-aperture panoramas.

Its larger-than-life vistas are breathtaking reaching out to Moreton Bay, Stradbroke Island, as far as the Gold Coast and the Great Dividing Range.

Living rooms offer a heightened sense of flow and space that draws the seemingly infinite views deep into the apartments. Generous balconies on the low rise floors or wintergardens above create a seamless feel between the world outside and your home within.

Designed to maximise light, air and outlooks, these elevated residences will be very special places to live.





Open your front door to be met by a brilliant expanse of view-filled living. Whether entertaining friends or spending a quiet night in, it's always a pleasure with views like these as a backdrop.



ARCHITECTURAL GRANDEUR AMIDST NATURAL SPLENDOUR.

A vision of elegance, Brisbane Skytower is a beautiful piece of architecture set in a truly magnificent setting.

A sheer curtain glass wall, punctuated by luxury recreation decks, commands the sky as it rises above the City Botanic Gardens and the gentle bends of the Brisbane River below.

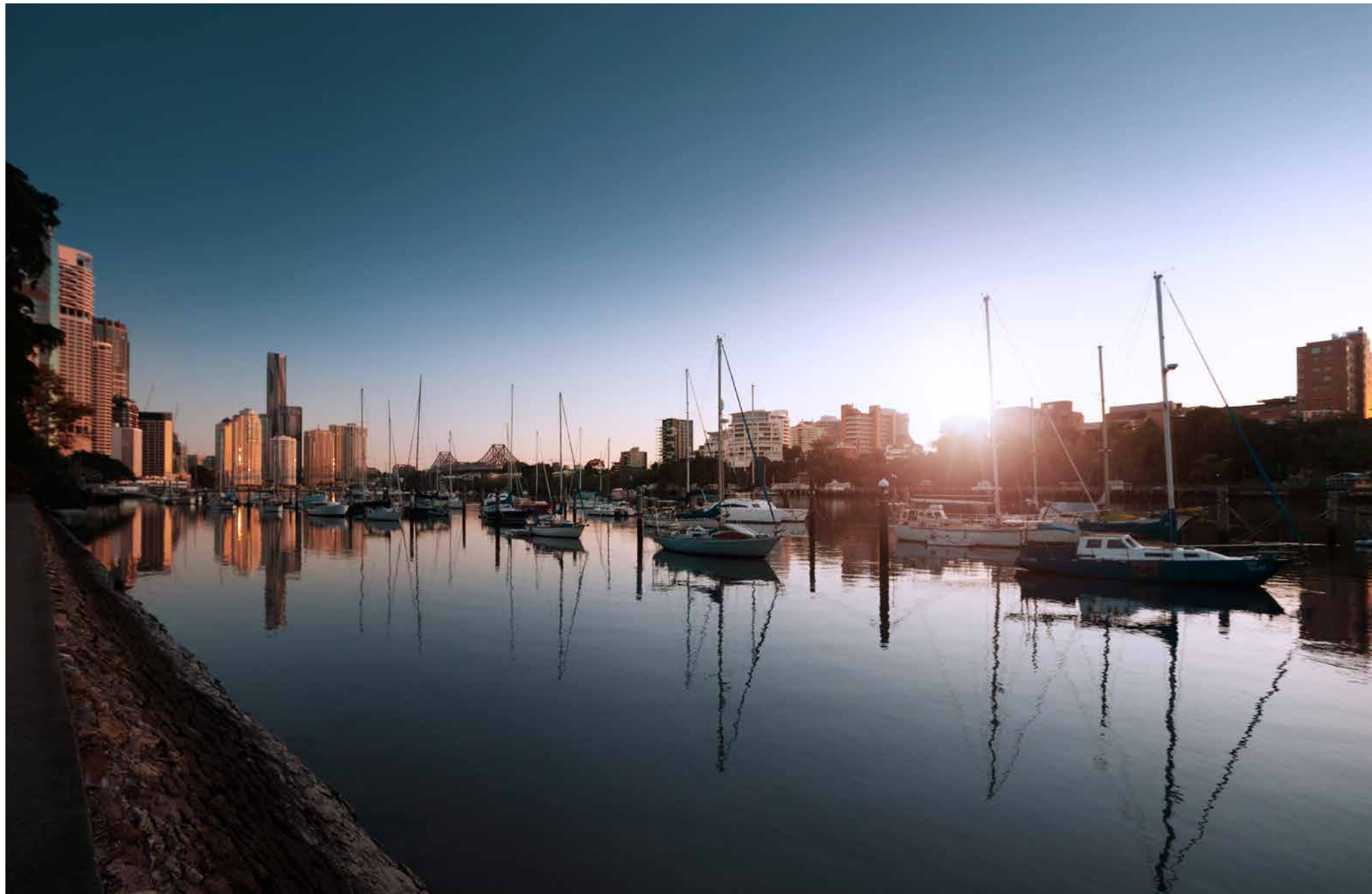
Flourishing at the tower's feet, these incredible riverside gardens are a cocoon of serenity in the midst of a bustling urban centre. All around you Brisbane Skytower lets you chart that perfect line between urban excitement and natural splendour.

With its sweeping gestures and bold views, this iconic tower will be the brand new centrepiece of the Brisbane skyline.





Find space to live life slowly in the heart of the metropolis. Seek out a shaded grove to catch your breath under Brisbane's perfect sub-tropical skies.



TAKE ME TO THE RIVER.

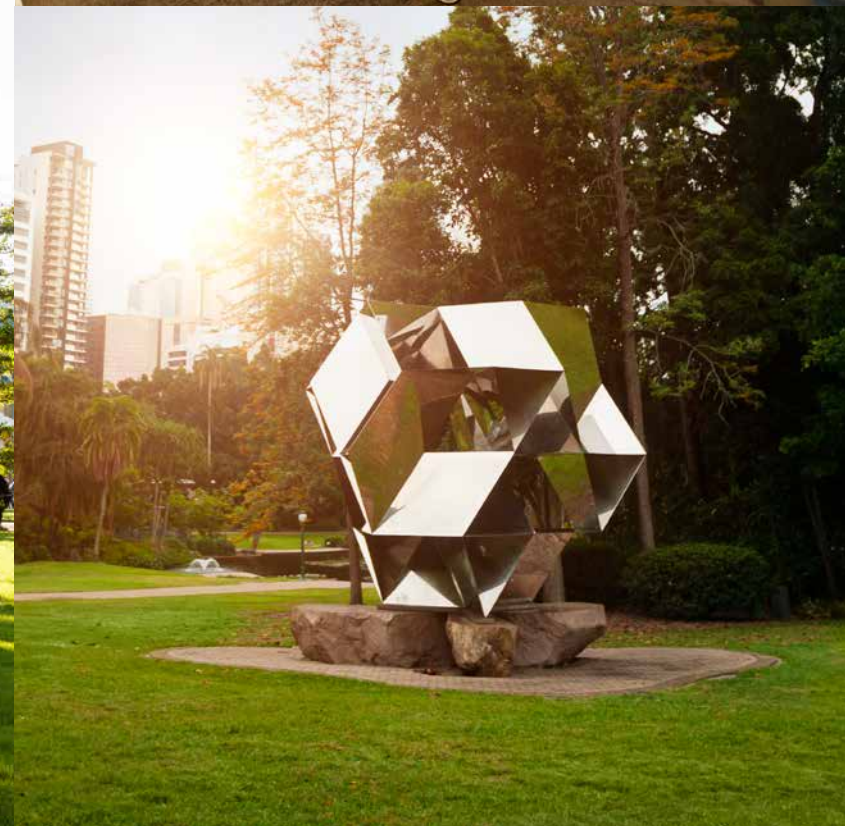
Take a moment to pause at the start or end of a busy day.

Immerse yourself in this river and parkland sanctuary whenever you feel the need.

Ancient trees, rainforest glades and masses of green lawn entwine with a network of paths where strollers, joggers, picnickers and cyclists seek quiet spots for respite or scenic routes to the many city riverside attractions.

If there's one thing more appealing than riverside living, it's inner city riverside living. Fast when you want it. Slow when you need it.

Life flows smoothly when you live at Brisbane Skytower.





YOUR RESORT
IN THE SKY.

A FIVE STAR LIFESTYLE.



ARTIST IMPRESSION

Brisbane Skytower offers a seductive mix of fashionable city life and five-star leisure in one iconic building.

Under blue skies and warm Brisbane nights, this exhilarating tower makes the everyday extraordinary. Infinity pools let you swim to the edge of the building breathing in long, spectacular vistas over the whole of Brisbane, the islands at sunrise, sailing boats in the bay, the cruise liners heading out at sunset.

Residential zones feature expansive recreation decks, with spectacular swimming pools, gymnasiums, lounges, outdoor kitchens and more.

Entertain guests in the Skyrise lounge where the views certainly make for a show stopping conversation point.

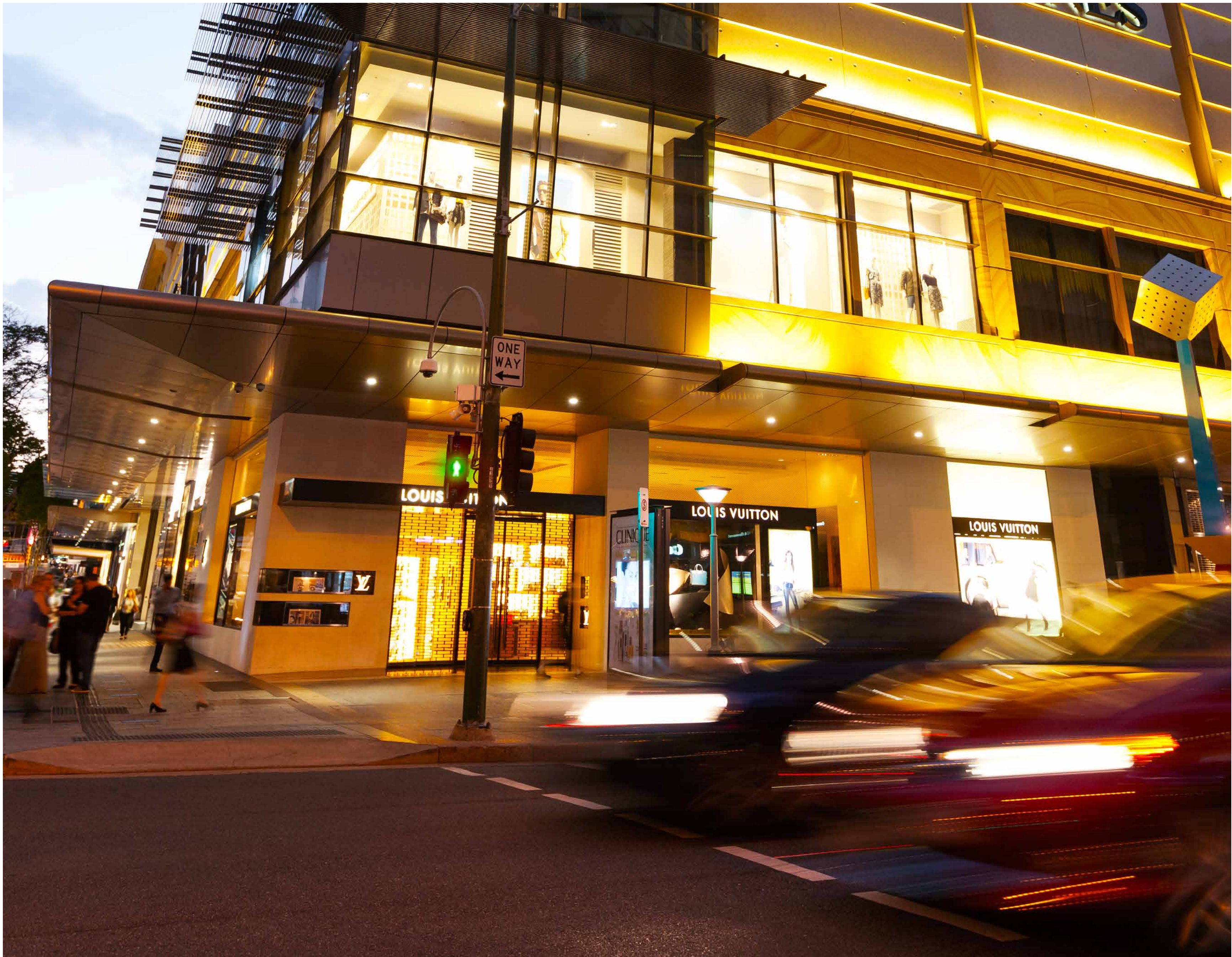
Throughout the tower you'll find world-class resort amenities for quiet contemplation or memorable entertaining overlooking Brisbane.



ARTIST IMPRESSION



ARTIST IMPRESSION



ENTERTAIN YOURSELF IN STYLE.

Welcome to the beating heart of Brisbane's premier retailing and entertainment precinct. Its rich collection of luxury stores, and arts centres caters to those who want the best in life.



Photo Courtesy of Queensland Symphony Orchestra



THE CITY IS YOURS.

A byword for glamour, Brisbane Skytower offers its stylish residents a wealth of cultural and retail experiences.

Brisbane is a playground for lovers of art, music, theatre and luxury shopping with creative treasures and fashion-forward temptations spilling from the doors of your tower home.

Meander down to Queen Street Mall, Australia's busiest pedestrian plaza or the "Paris End" of Edward and Elizabeth Streets for their clusters of prestige stores. Stroll across to the neighbouring arts precinct and catch a show.

Follow the twists and turns of the river and you'll find world-class galleries and cosmopolitan retail to fascinate and amuse whenever the mood takes you.





www.billbergia.com.au

The Development team

Billbergia – Creating Communities

Billbergia is a private, integrated Australian property group dedicated to developing quality living environments through the creation of well-planned, accessible communities that promote a healthy lifestyle, sustainable living and vibrant areas for stimulating social interaction.

With more than 25 years' experience Billbergia conducts business across every stage of the property life cycle including investment management, acquisition, development management, planning and design, construction, project marketing and sales.

In creating Brisbane Skytower, their fervent hope is that current and future residents enjoy all of the thoughtful extras that make a Billbergia property liveable and different. Billbergia understands that it's the little things that are truly appreciated.



Village Quay



Wentworth Point Marinas, Zen



The Residence, Hyde Park



Wentworth Point Marinas, Sirius



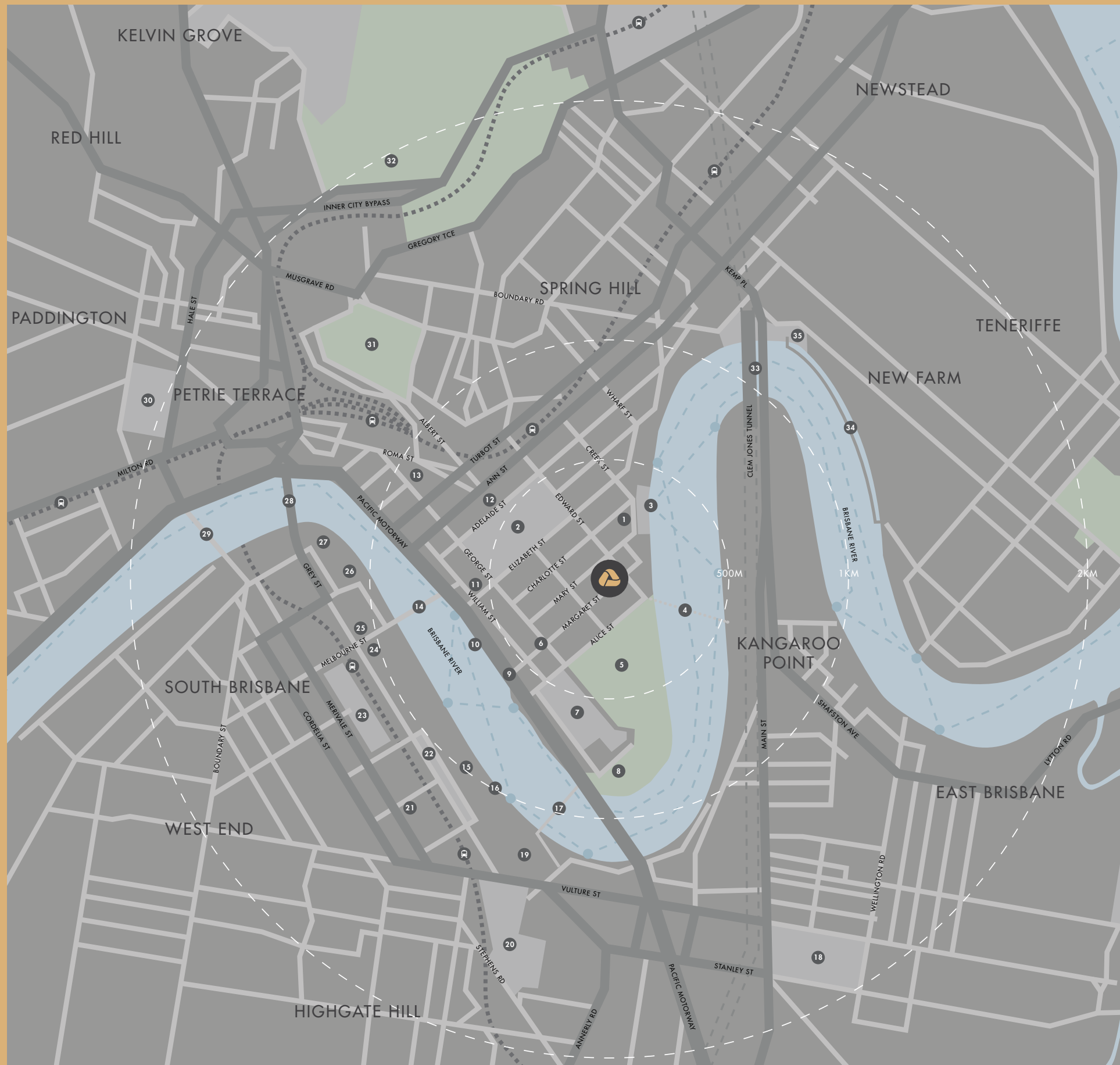
ampcapital.com.au

AMP Capital – Partner

AMP Capital is a specialist investment manager with more than \$144 billion in funds under management. As a wholly owned subsidiary of AMP, AMP Capital operates independently with a pure investment focus, but benefit from the resources of the parent company.

Property investment is one of AMP Capital's core strengths with more than \$24 billion in Australian property assets under management. AMP Capital is one of the largest wholesale property fund managers in Australia and New Zealand and has managed property investments on behalf of superannuation funds and wholesale investors in the region for over 50 years.

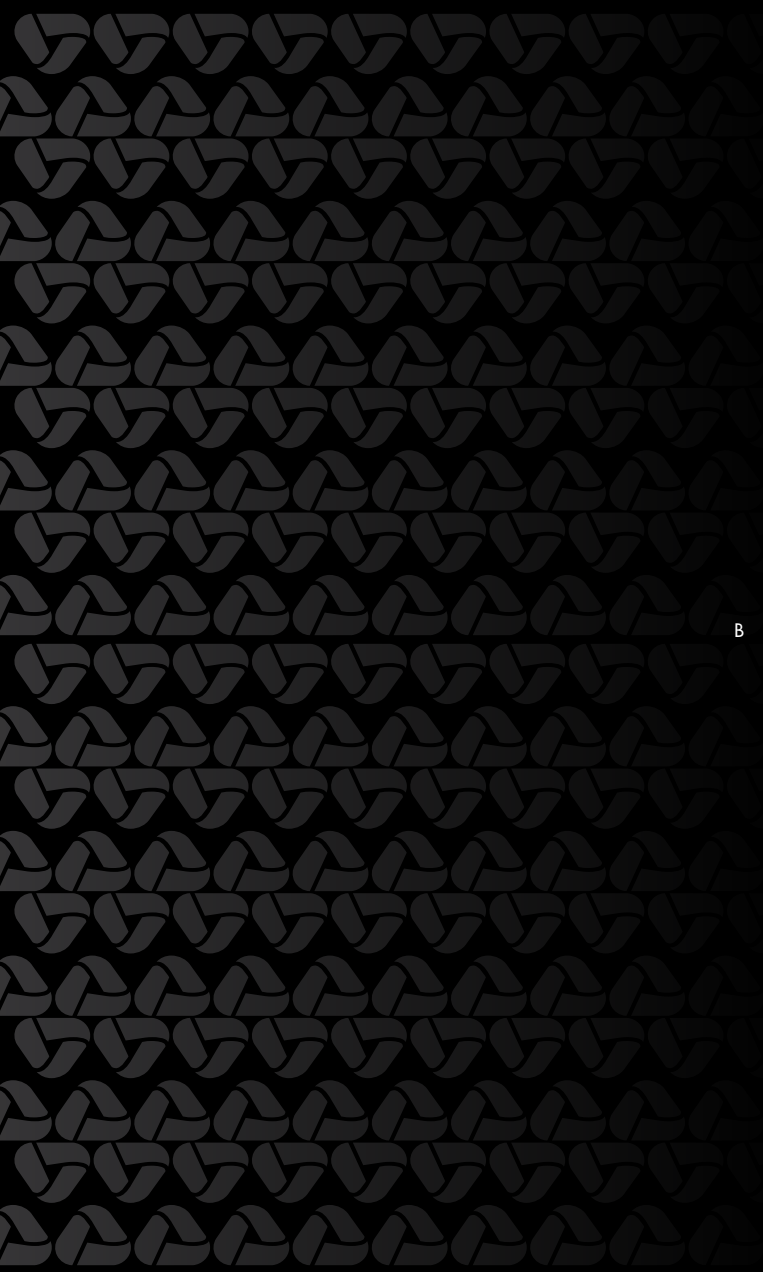
AMP Capital is proudly associated with Brisbane's new landmark residential development, Brisbane Skytower.



- | | | |
|---------------------------------------|-----------------------------------|---|
| 1 GOLDEN TRIANGLE BUSINESS DISTRICT | 12 KING GEORGE SQUARE BUS STATION | 23 BRISBANE CONVENTION & ENTERTAINMENT CENTRE |
| 2 QUEEN STREET MALL | 13 LEGAL PRECINCT | 24 QPAC |
| 3 EAGLE STREET PIER | 14 VICTORIA BRIDGE | 25 QUEENSLAND MUSEUM & SCIENCENTRE |
| 4 FUTURE FOOT BRIDGE | 15 SOUTH BANK PARKLANDS | 26 STATE LIBRARY |
| 5 BOTANIC GARDENS | 16 SOUTH BANK BEACH | 27 GALLERY OF MODERN ART |
| 6 BAT STATION | 17 GOODWILL BRIDGE | 28 KURILPA BRIDGE |
| 7 QUEENSLAND UNIVERSITY OF TECHNOLOGY | 18 THE GABBA | 29 WILLIAM JOLLY BRIDGE |
| 8 BRISBANE RIVERSTAGE | 19 GRIFFITH UNIVERSITY | 30 SUNCORP STADIUM |
| 9 QUEENS WHARF ENTERTAINMENT PRECINCT | 20 SOMERVILLE HOUSE | 31 ROMA STREET PARKLANDS |
| 10 CITY CAT | 21 SOUTH BANK TAFE | 32 VICTORIA PARK GOLF COURSE |
| 11 QUEENS WHARF CASINO | 22 SOUTH BANK DINING PROMENADE | 33 RIVER WALK |
| | | 34 HOWARD SMITH WHARFS |

For Further Information Please Contact:

www.brisbaneskytower.com.au



B R I S B A N E S K Y T O W E R . C O M . A U

