



# SPACE + LOCATION

Huntingwood Business Centre | 4 Ford Street & 45 Huntingwood Drive, Huntingwood NSW



# an ideal location for the corporate minded industrial user+

Huntingwood Business Centre is ideally located in the established industrial hub of Huntingwood close to major motorways and public transport.

A number of outstanding leasing opportunities are available within the estate offering 4,447–7,040 sqm of highly functional warehouse and office space.

02

Huntingwood  
Business Centre

OPPORTUNITY

### 03

#### Huntingwood Business Centre

Surrounding users include Schweppes, Arnotts, DHL, Sharp, Sony, Woolworths and Costco.





2.5km

M4 Motorway  
(eastbound and westbound)



1km

Great Western Highway



2.8km

M7 Motorway



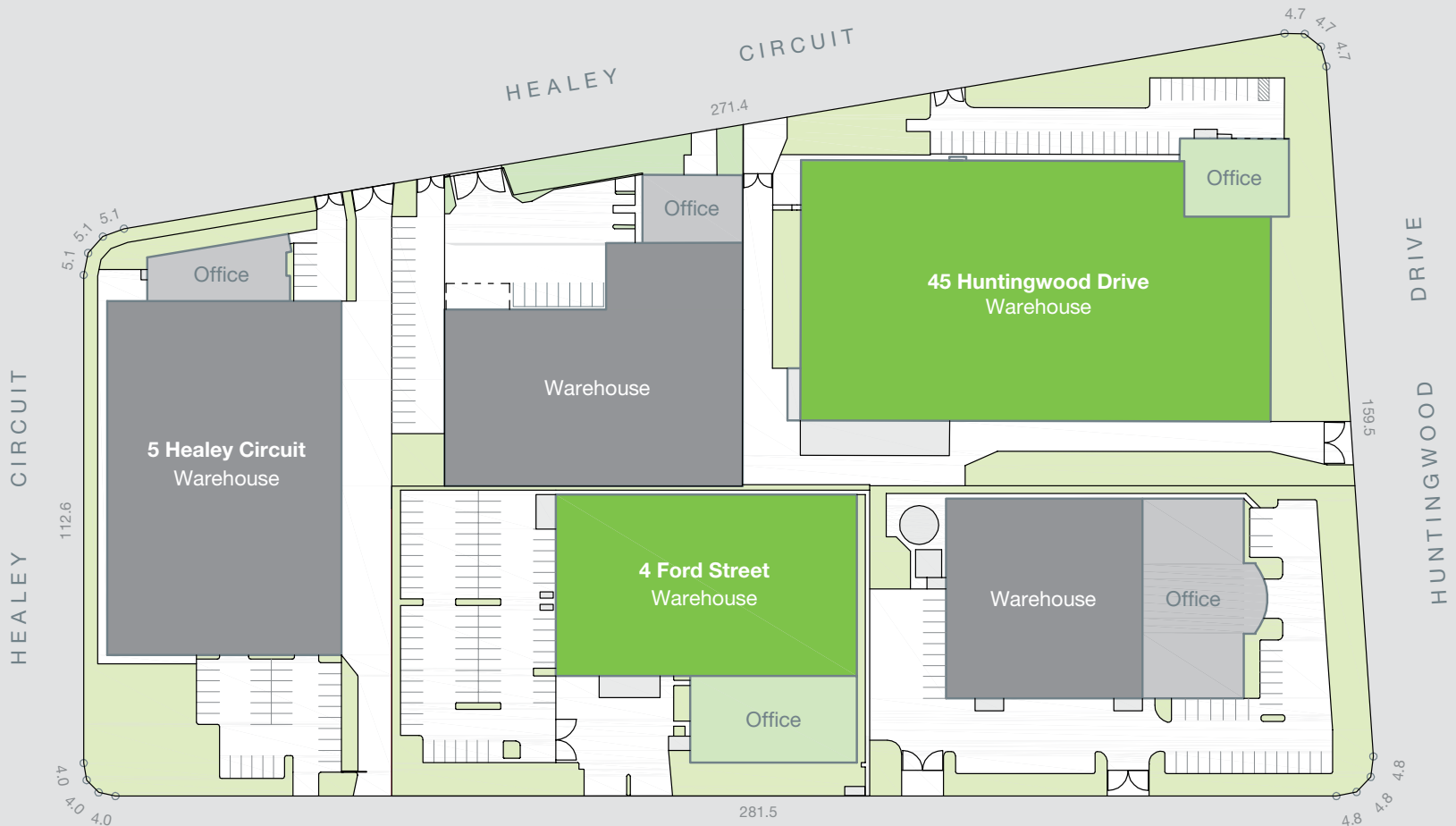
30m

Closest bus stop

# site plan+

05

Huntingwood  
Business Centre



■ For lease



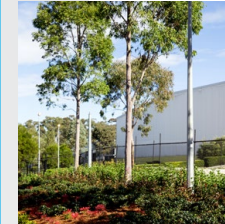
# 4 ford street+

- + Freestanding building of 4,498.1 sqm
- + 2,906 sqm of clear span warehouse
- + Internal clearance up to 9.4 metres
- + Access via multiple roller shutter doors
- + Large awning permits all-weather loading
- + 1,540 sqm of refurbished office with ample natural light
- + Approximately 80 on-site car spaces
- + Substantial power supply



06

Huntingwood  
Business Centre

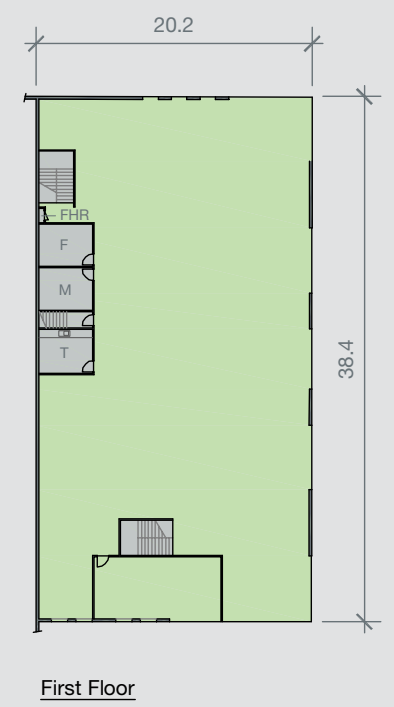


FEATURES

# building plan+

07

Huntingwood  
Business Centre



Area schedule	sqm
<b>Ground floor</b>	
Warehouse	2,906.2
Office	766.9
<b>First floor</b>	
Office	773.4
Plant 1	38.3
Plant 2	13.3
<b>Total</b>	<b>4,498.1</b>

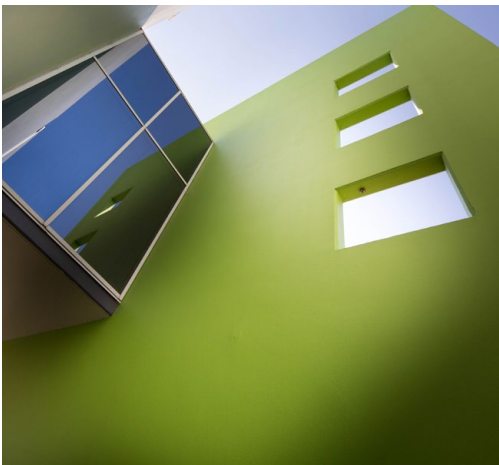
# 45 huntingwood drive+

- + Standalone 7,040 sqm facility
- + Modern warehouse of 6,294 sqm
- + Maximum internal clearance of 10.4 metres
- + Dock and on-grade access
- + Large awnings provide all-weather loading
- + 788 sqm office space over two levels
- + Generous on-site parking



08

Huntingwood  
Business Centre



FEATURES



# building plan+



09

Huntingwood  
Business Centre

Area schedule	sqm
Ground level	
Warehouse	6,294.4
Office	315.0
Level 1	
Office	473.8
<b>Total</b>	<b>7,083.2</b>

# contact+

**Sue-Lyn Ung**

Portfolio Manager

sue-lyn.ung@goodman.com

**T** 02 9230 7150**M** 0424 295 259**Oliver Taylor**

Asset Manager

oliver.taylor@goodman.com

**T** 02 9230 7457**M** 0420 981 433**Goodman**

Level 17

60 Castlereagh Street

Sydney NSW 2000

T 02 9230 7400

**[www.goodman.com/au](http://www.goodman.com/au)**

This document has been prepared by Goodman Property Services (Aust) Pty Ltd ABN 40 088 981 793 for general information purposes only. Whilst every care has been taken in relation to its accuracy, no warranty of accuracy is given or implied. You should obtain your own independent advice before making any decisions about the property referred to in this document. Images contained in this document have been used to enable the customer to visualise the development concepts only, and are not intended to definitively represent the final product. March 2015