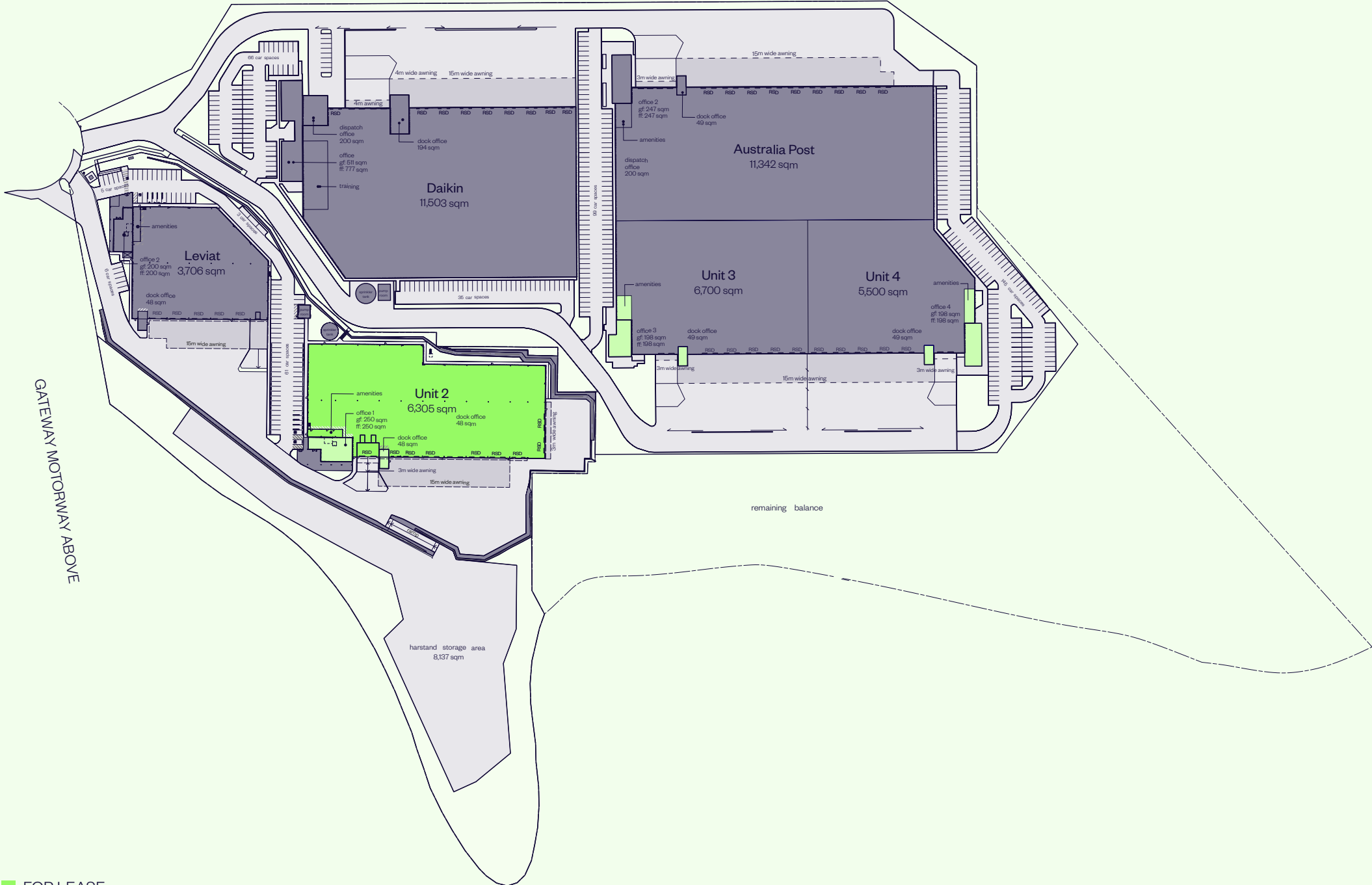


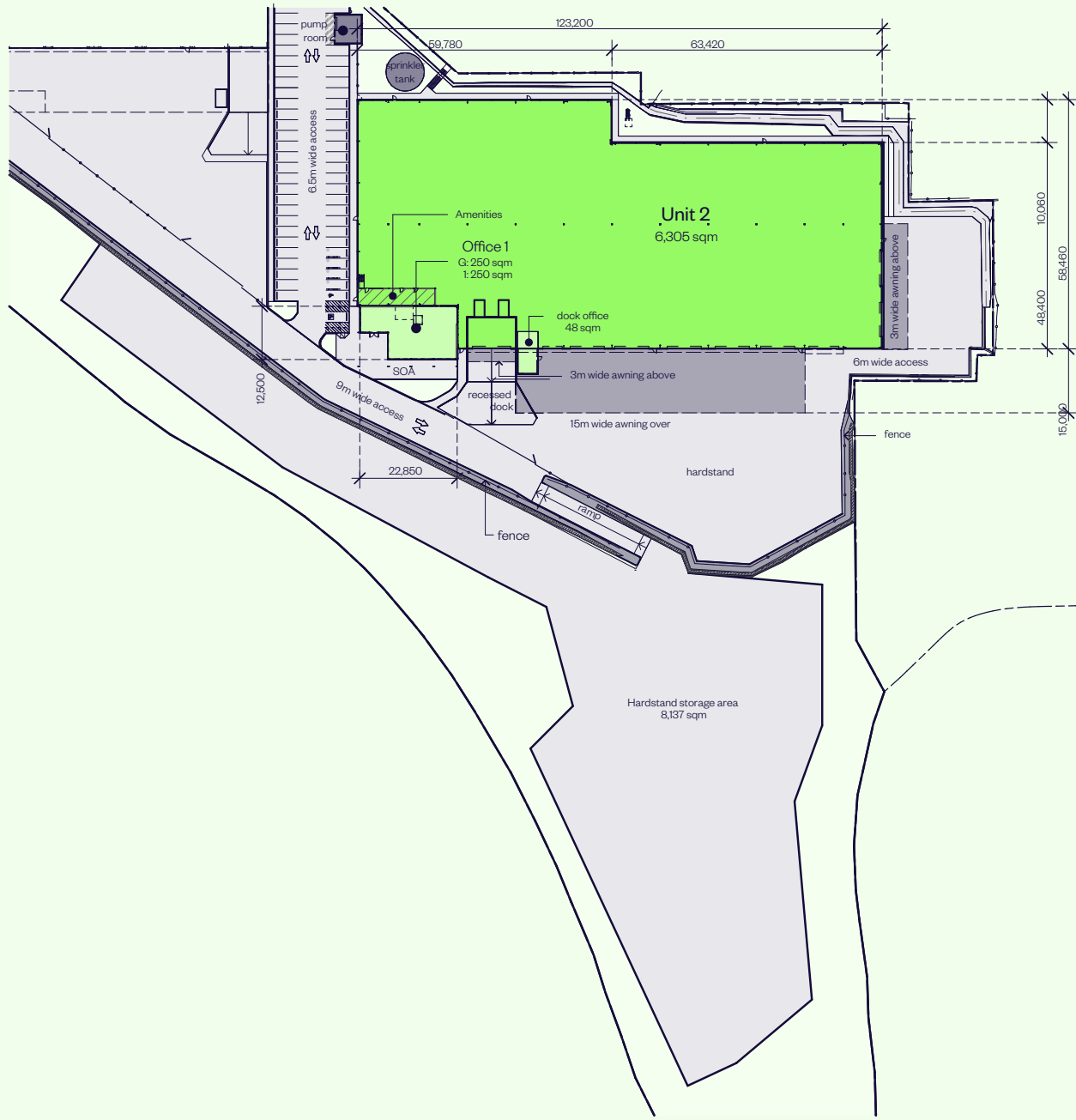
MASTERPLAN



■ FOR LEASE

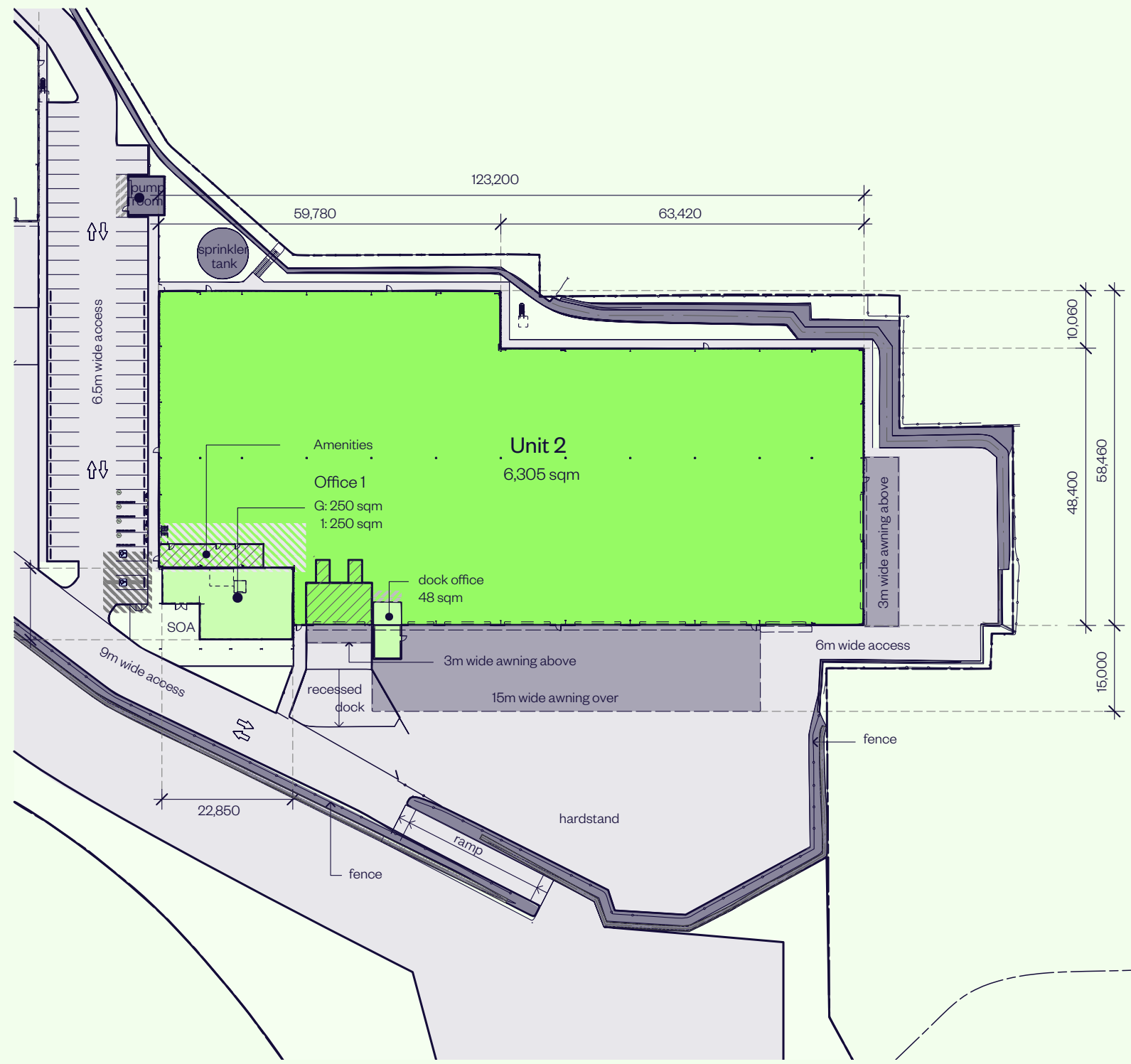
UNIT 2 AND HARDSTAND PLAN

| AREA SCHEDULE | SQM |
|-------------------------|--------------|
| Warehouse 2 | |
| Warehouse | 6,305 |
| Office ground | 250 |
| Office first | 250 |
| Dock office | 48 |
| Total | 6,853 |
| Car parks | 97 spaces |
| Adjacent hardstand area | 8,137 |



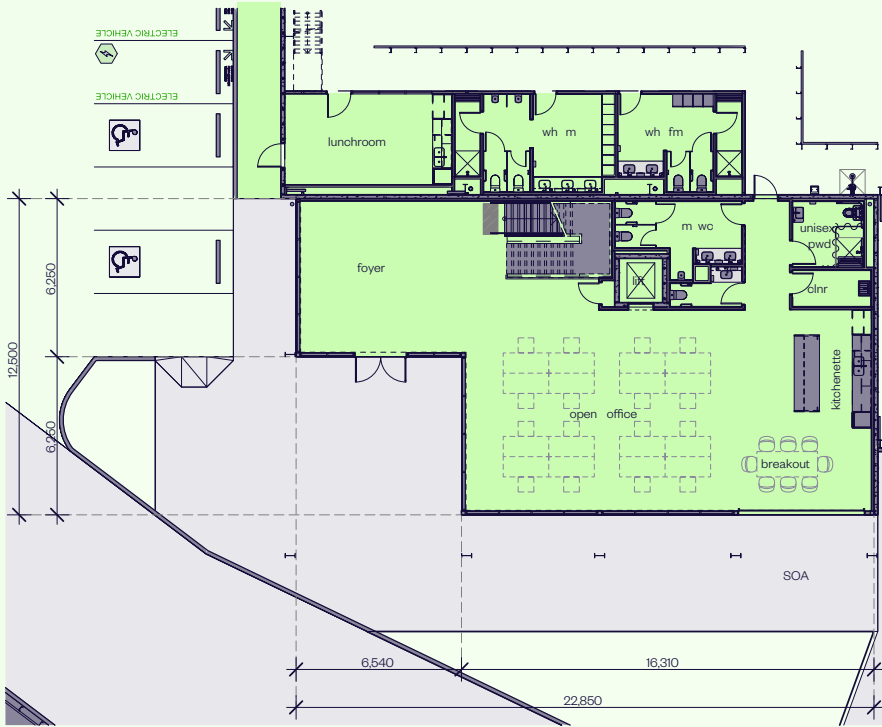
UNIT 2 PLAN

| AREA SCHEDULE | SQM |
|-------------------------|--------------|
| Warehouse 2 | |
| Warehouse | 6,305 |
| Office ground | 250 |
| Office first | 250 |
| Dock office | 48 |
| Total | 6,853 |
| Car parks | 97 spaces |
| Adjacent hardstand area | 8,137 |

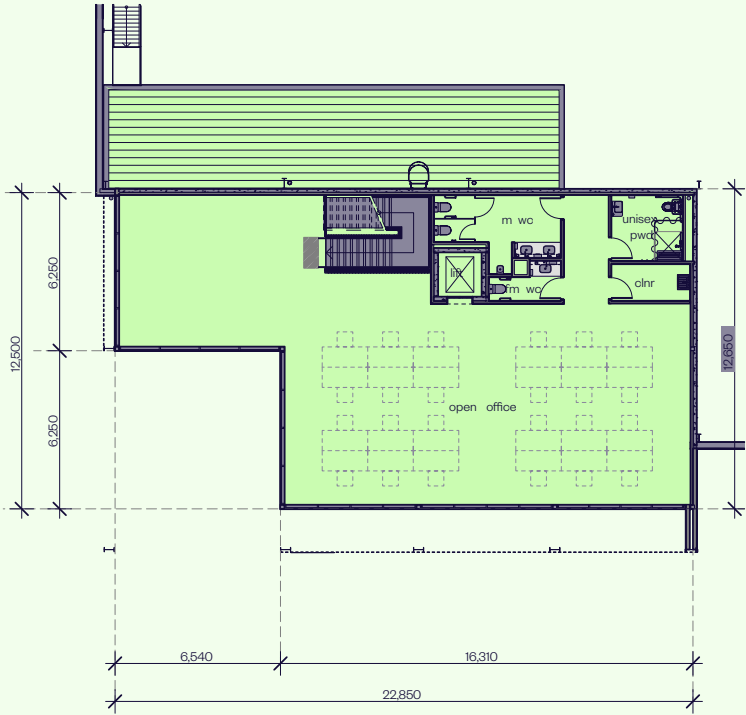


UNIT 2 OFFICE PLAN

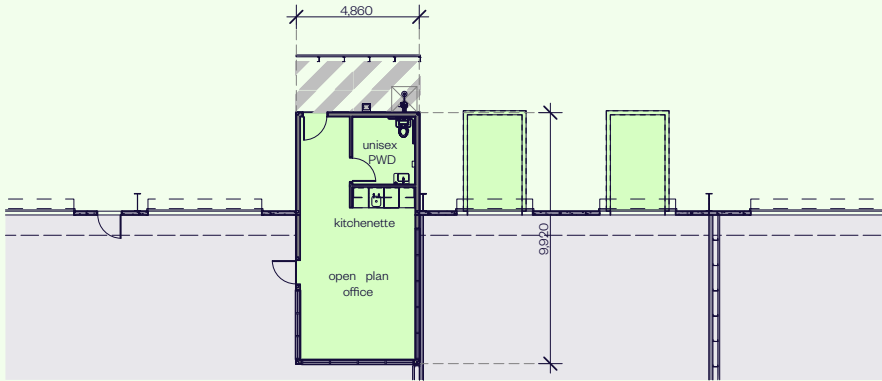
| AREA SCHEDULE | SQM |
|---------------|------------|
| Office 2 | |
| Office ground | 250 |
| Office first | 250 |
| Dock office | 48 |
| Total | 548 |



Office - ground floor



Office - first floor



Dock office