

62-64 Gawler Place  
Adelaide

S  
I  
G  
N  
A  
G  
E

S  
I  
G  
N  
A  
G  
E

SIGNAGE

igo Asi

SIGNAGE

WANG



## 62-64 Gawler Place, Adelaide – Ground Floor

**A RARE OPPORTUNITY 1st time offered in 80 years**  
**Signage at 4 points facing Gawler Place (including naming rights) over 4 levels of building.**

Be part of the \$18 million Gawler Place upgrade in this prominent position in the Rundle Mall Precinct in Adelaide. Fantastic exposure and branding potential in one of the city's busiest pedestrian thoroughfares (approx 25,000 daily).

Get in on the Ground Floor offering 252 sqm of refurbished open plan space in a boutique building. Valuable rear lane access to Francis Street and Rundle Place. Amenities upgrade include new air conditioning and wet areas. Swipe card security entry, energy efficient lighting and large glazed shopfront.

Capital City zone with great flexibility for a variety of uses- High quality retail, food/beverage service. Be part of the Big Brands including Nespresso, Harvey Norman, OfficeWorks, Chemist Warehouse, National Pharmacies, UGG Australia and the flagship H & M only meters away.

For more information about this rare opportunity, contact George Noicos:

Mobile: 0418 856 396

Email: [george@georgenoicos.com.au](mailto:george@georgenoicos.com.au)



*\*Perspectives are rendered for illustrative purposes only*

# Gawler Place / Rundle Mall Precinct

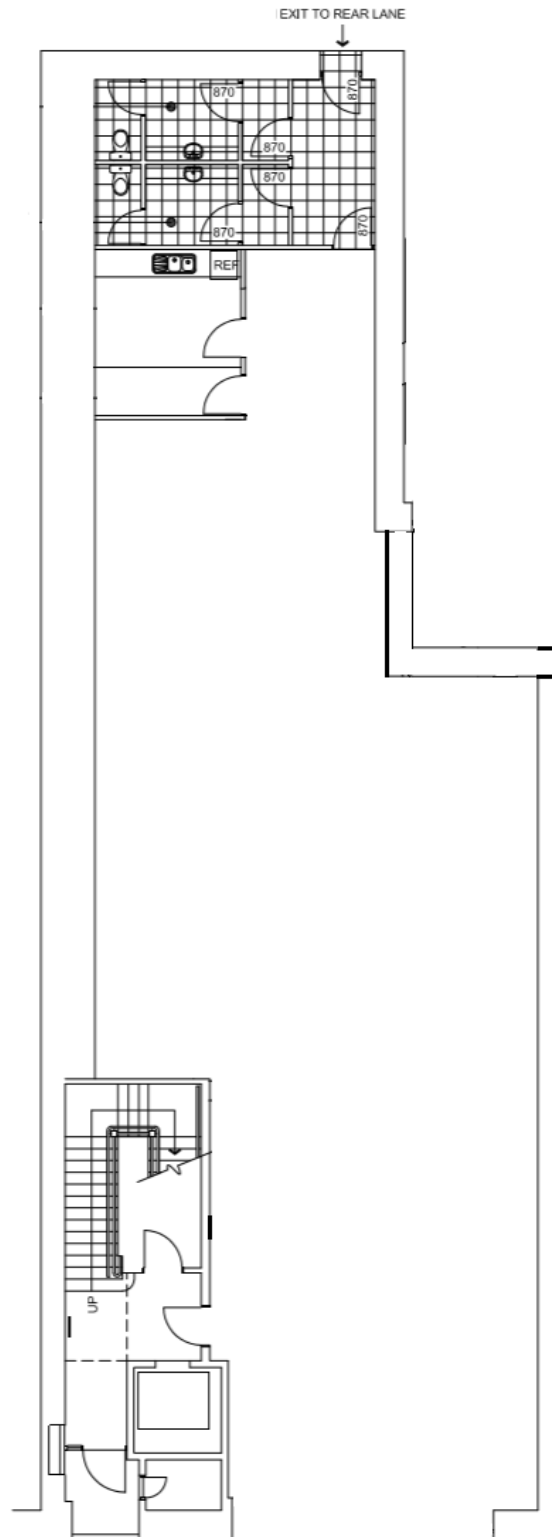


# Gawler Place / Rundle Mall Precinct





Ground Floor  
Total area: 252 sqm



Rear lane access via Francis Street

