

WATERMAN

WORKSPACES

SUITE 2 – FOR LEASE

Private Office for 15 Staff

📍 **WATERMAN BUNDOORA**
Level 2/1 Janefield Dr,
Bundoora VIC 3083

👤 15 person capacity

📐 54m²

🚗 Onsite Parking

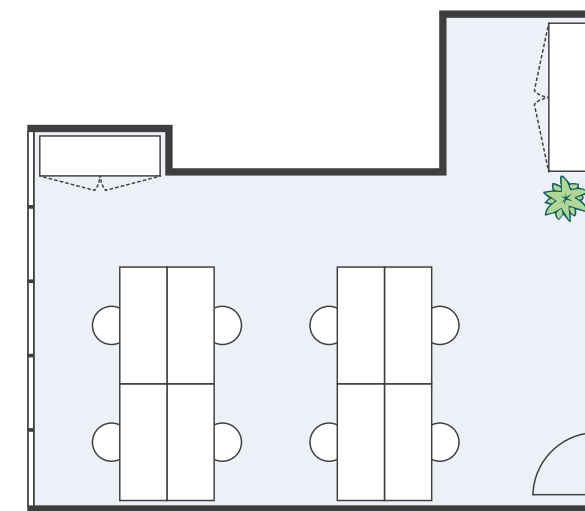
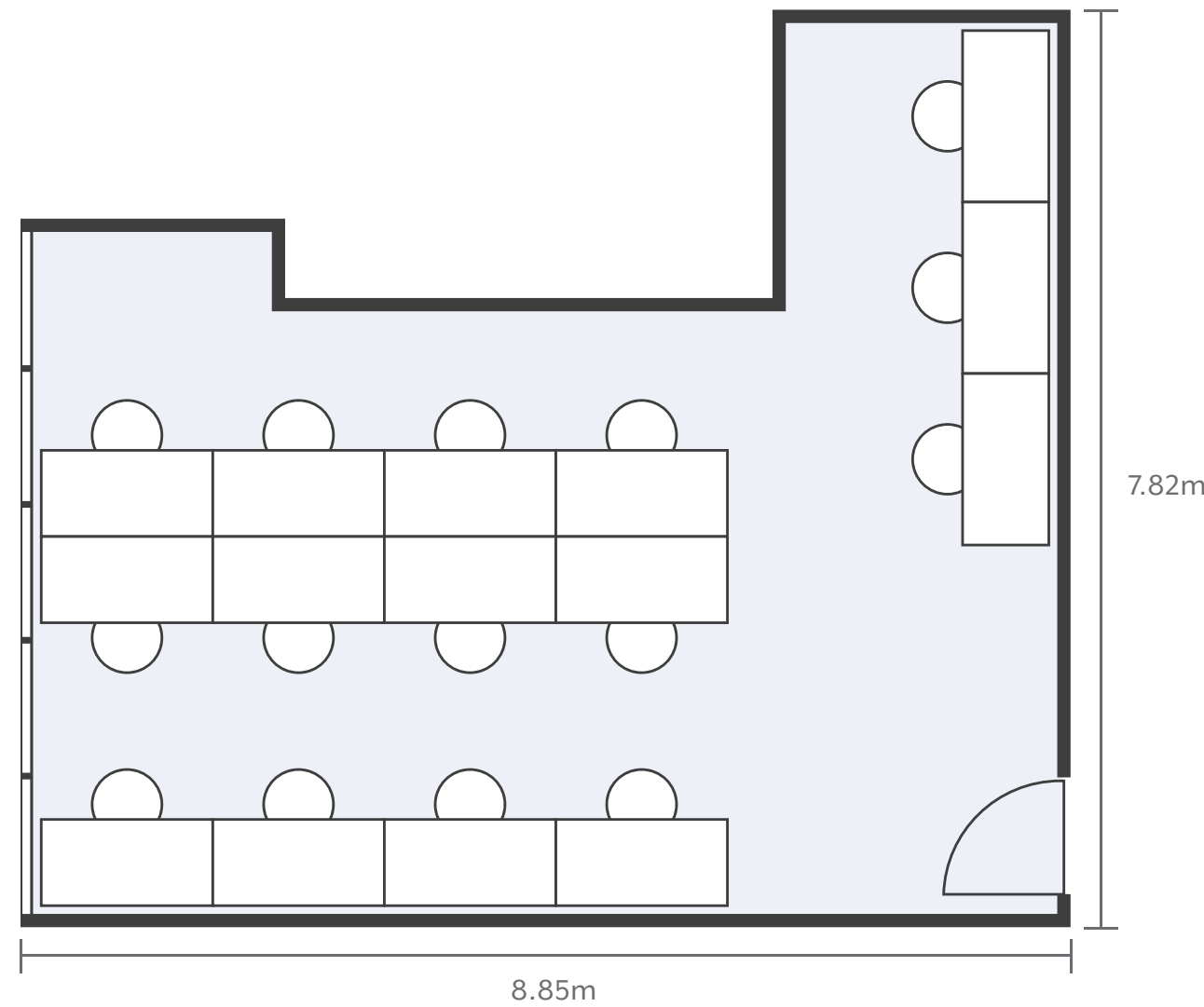
Suite 2 – Bundoora

📍 LEVEL 2/1 JANEFIELD DR,
BUNDOORA VIC 3083

👤 15 person capacity

🏠 54m²

🚗 Onsite Parking

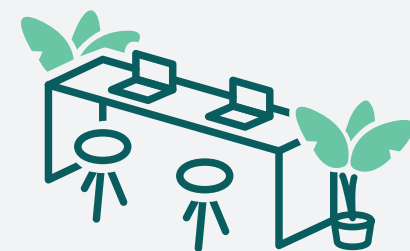


Example furniture & fitout layouts shown above. Suite pricing does not include furniture and fitout pictured.

Cost Summary

Inclusions	Rate Per SQM	Per Calendar Month	Per Annum
Base Rental	\$408.20	\$1,836.92	\$22,043.04
Common Areas	\$587.82	\$2,645.18	\$31,742.16
Meeting Rooms	\$34.02	\$153.07	\$1,836.84
Body Corporate	\$81.64	\$367.39	\$4,408.68
Parking	\$40.82	\$183.69	\$2,204.28
Phone	\$17.01	\$76.54	\$918.48
Internet	\$34.02	\$153.07	\$1,836.84
Reception	\$102.05	\$459.23	\$5,510.76
Electricity	\$66.34	\$298.51	\$3,582.12
Management	\$66.34	\$298.51	\$3,582.12
Security	\$56.13	\$252.57	\$3,030.84
Cleaning	\$76.54	\$344.43	\$4,133.16
TOTAL	\$1,570.91	\$7,069.11	\$84,829.32

*All prices are excl. GST



PAY FOR AN OFFICE, ACCESS AN ENTIRE CENTRE

As a Waterman member, you have access to an entire centre of additional space and amenity. Spread over 1,200 sqm with common space, break out areas, meeting rooms, generous kitchen facilities and a variety of purpose built coworking stations at Waterman Bundoora, you and your team will have plenty of choice and variety to suit every mood & work purpose.



ENQUIRE NOW

Contact **Lauren**, our leasing specialist at lauren.jbeily@waterman.com.au or simply call 0439 049 753

AFTER SOMETHING ELSE?

Enquire now and we'll find the right space for you and your team.