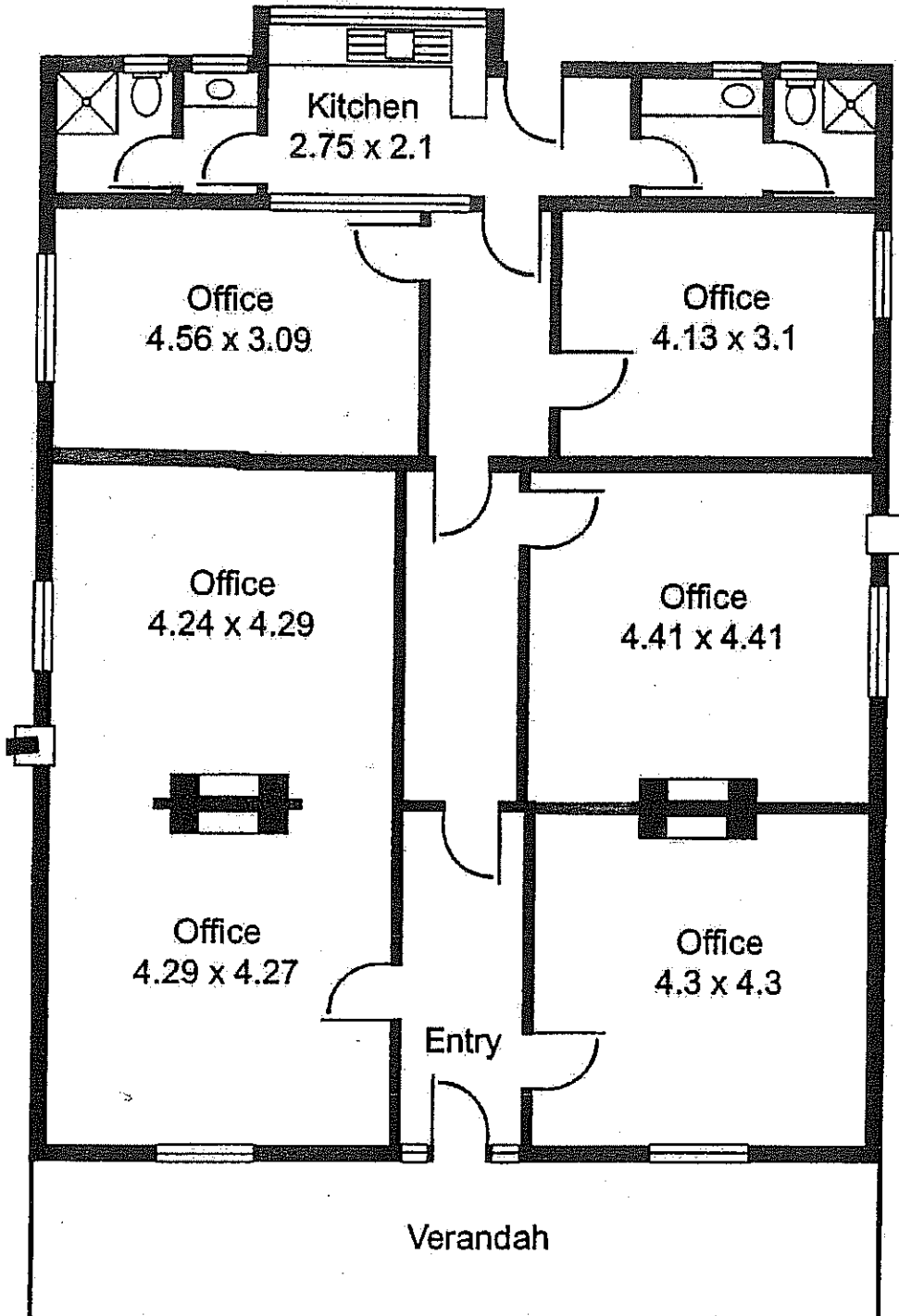


# PAYNEHAM

63 Portrush Road



HBMU0124

Offices	: 157.89 sqm (1699.5 sq ft)
Verandah	: 19.80 sqm ( 213.1 sq ft)
Total	: 177.69 sqm (1912.6 sq ft)

This drawing is for illustration purposes only.  
All measurements are approximate and details intended to  
be relied upon should be independently verified.