

Central Surfers - Professional Office Suite

Only \$1500/month +GST (incl. outs)



Area 92m²

Adjoins Major
Bruce Bishop Car Park

Level 5 "Parkrise" 3 Alison St

- Reception
- Managers Office
- Large Open Workstation Area
- Kitchenette



Close To
Light Rail



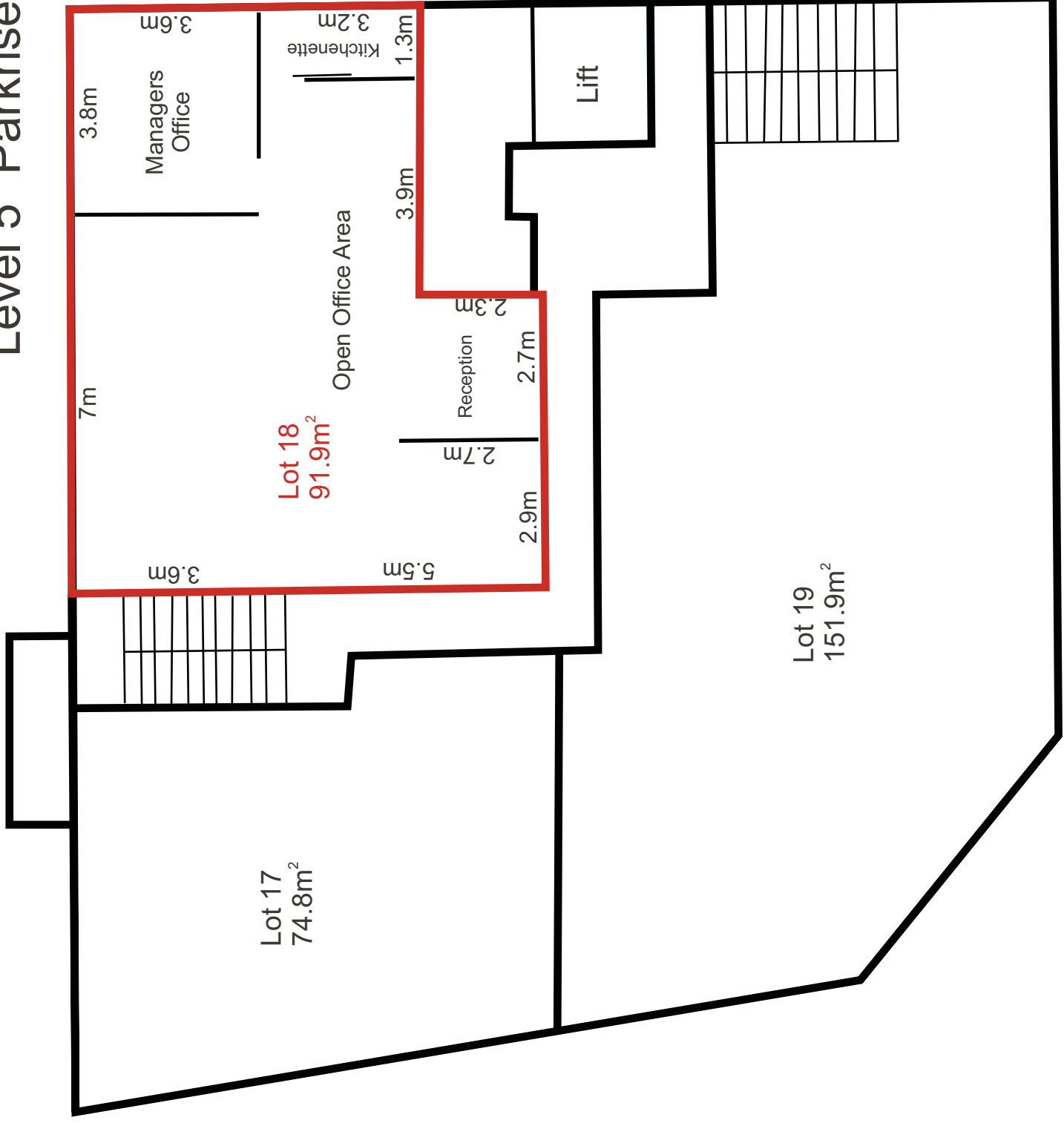
Easy Access & Parking

view more at www.wrappropertieservices.com

For enquiries, professional & confidential service
Phone Wayne Robbie on
(07) 5592 3180 or 0419 772 867

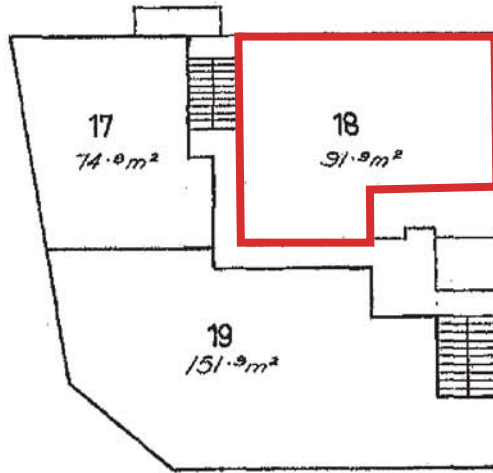


Level 5 "Parkrise" Building



BUILDING UNITS PLAN No. 1072

LEVEL 6



Units 17, 18 & 19,
Commercial purposes only.

Scale 1:250 (Metric)

Floor Areas are approximate only.

TOSTEE CONSTRUCTION COY. PTY. LTD.
by its duly constituted Attorney
JOHN WILLIAM McDONALD in the
presence of

De Campbell Schuster

TOSTEE CONSTRUCTION COY. PTY. LTD.
by its duly constituted Attorney

..... *John M. Donald*

SIGNATURE OF REGISTERED PROPRIETOR.

allan gree
SHIREXOREXTOWN CLERK.

GOLD COAST CITY COUNCIL.