

# Premier Address - Budds Beach, Surfers Paradise



**Prime Northeast Aspect**

**Huge 60 Metre Frontage**

## 15 Paradise Place

- Magnificent point position in the most prestigious street in Budds Beach
- Superb serene peaceful location and only a couple minutes walk to parkland foreshore & beachfront.
- Enormous 2 street frontage plus renovated beach style 4 bedroom residence with 2 living areas and 2 bathrooms.



**Only \$1,100,000**



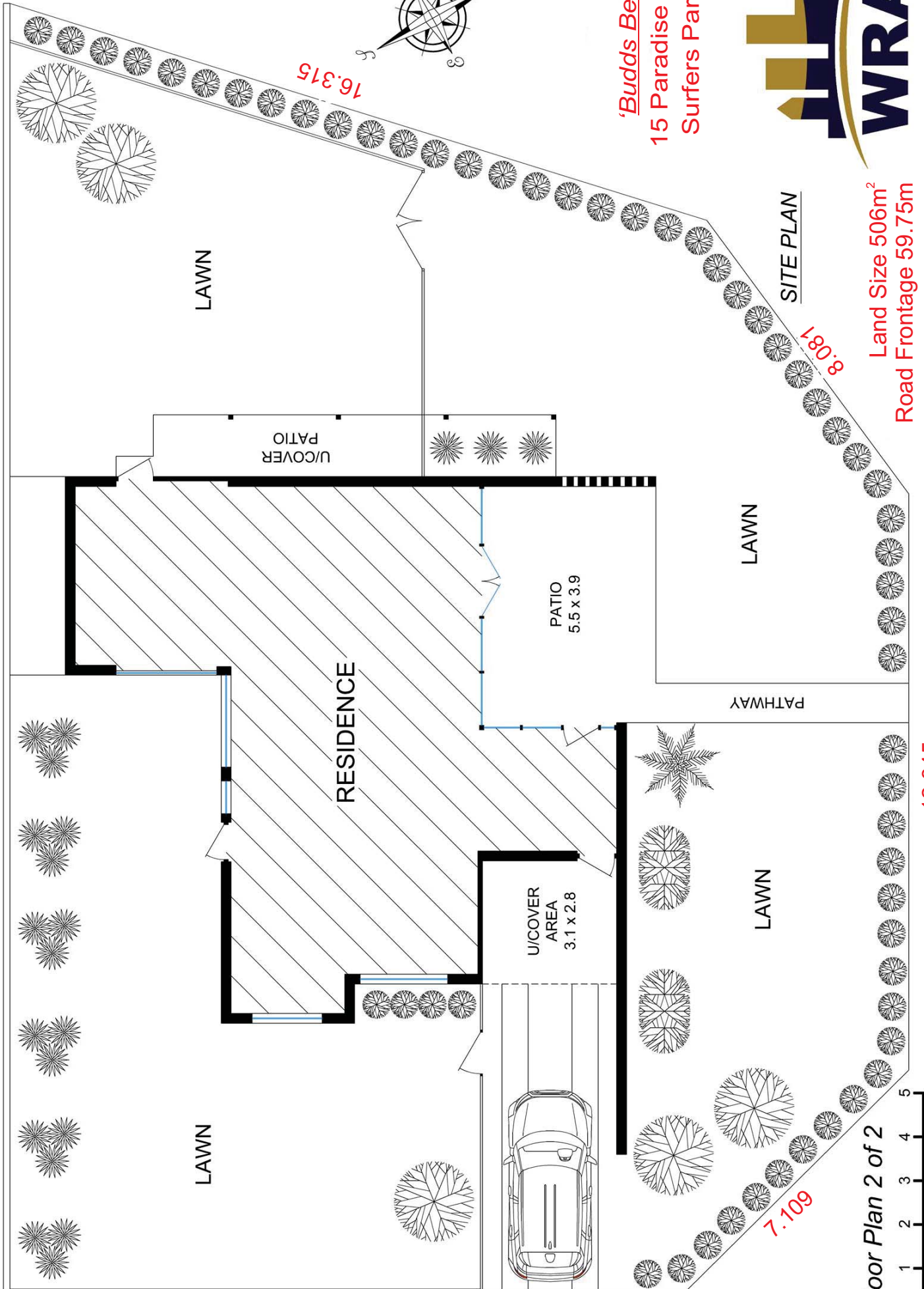
## Ideal Lifestyle or Redevelopment Opportunity\*

view more at [www.wrapropertyservices.com](http://www.wrapropertyservices.com)

For enquiries, professional & confidential service  
**Phone Wayne Robbie on**  
**(07) 5592 3180 or 0419 772 867**

\*Subject to  
Council Approval





15.401

16.315

7.109

12.845

8.081

Floor Plan 2 of 2



Gold Coast Floor Plans

Scale in Meters, Dimensions are approximate, Whilst every care has been made we cannot guarantee its 100% accuracy and interested persons should rely on their own enquiries

'Budds Beach'  
15 Paradise Place,  
Surfers Paradise



SITE PLAN

Land Size 506m<sup>2</sup>  
Road Frontage 59.75m

Land Size 506m<sup>2</sup>  
Road Frontage 59.75m

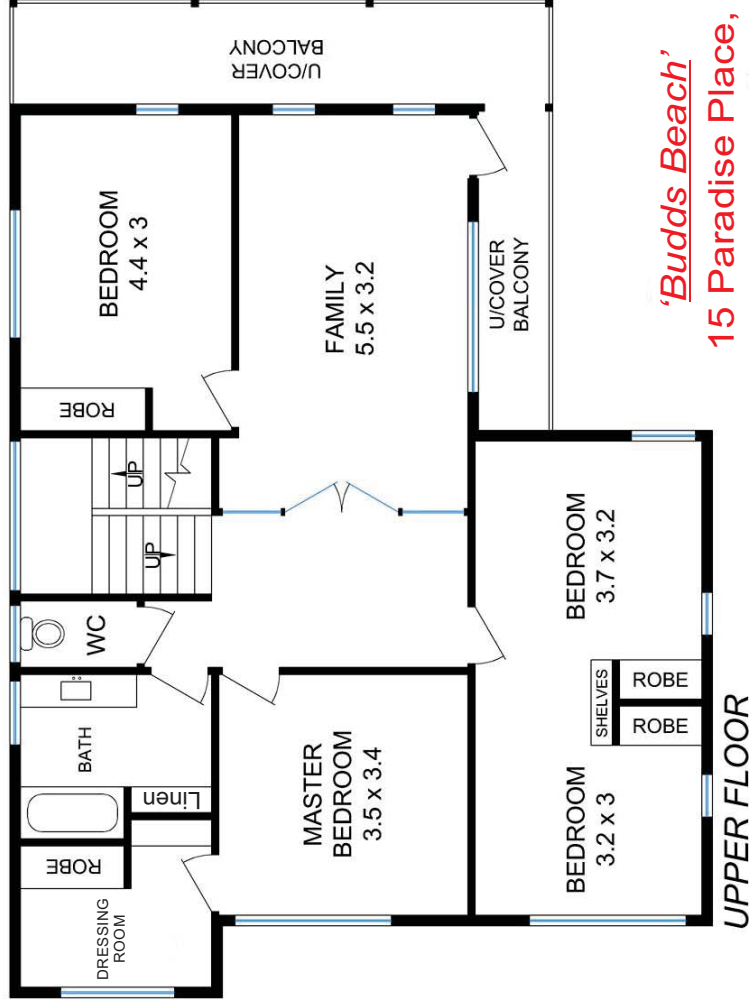


Floor Plan 1 of 2



Gold Coast Floor Plans

Scale in Meters, Dimensions are approximate. Whilst every care has been made we cannot guarantee its 100% accuracy and interested persons should rely on their own enquiries



**'Budds Beach'**  
15 Paradise Place,  
Surfers Paradise

Internal Ground Floor Area 89m<sup>2</sup>  
Internal Upper Floor Area 95.3m<sup>2</sup>

**Combined Internal 184.3m<sup>2</sup>**

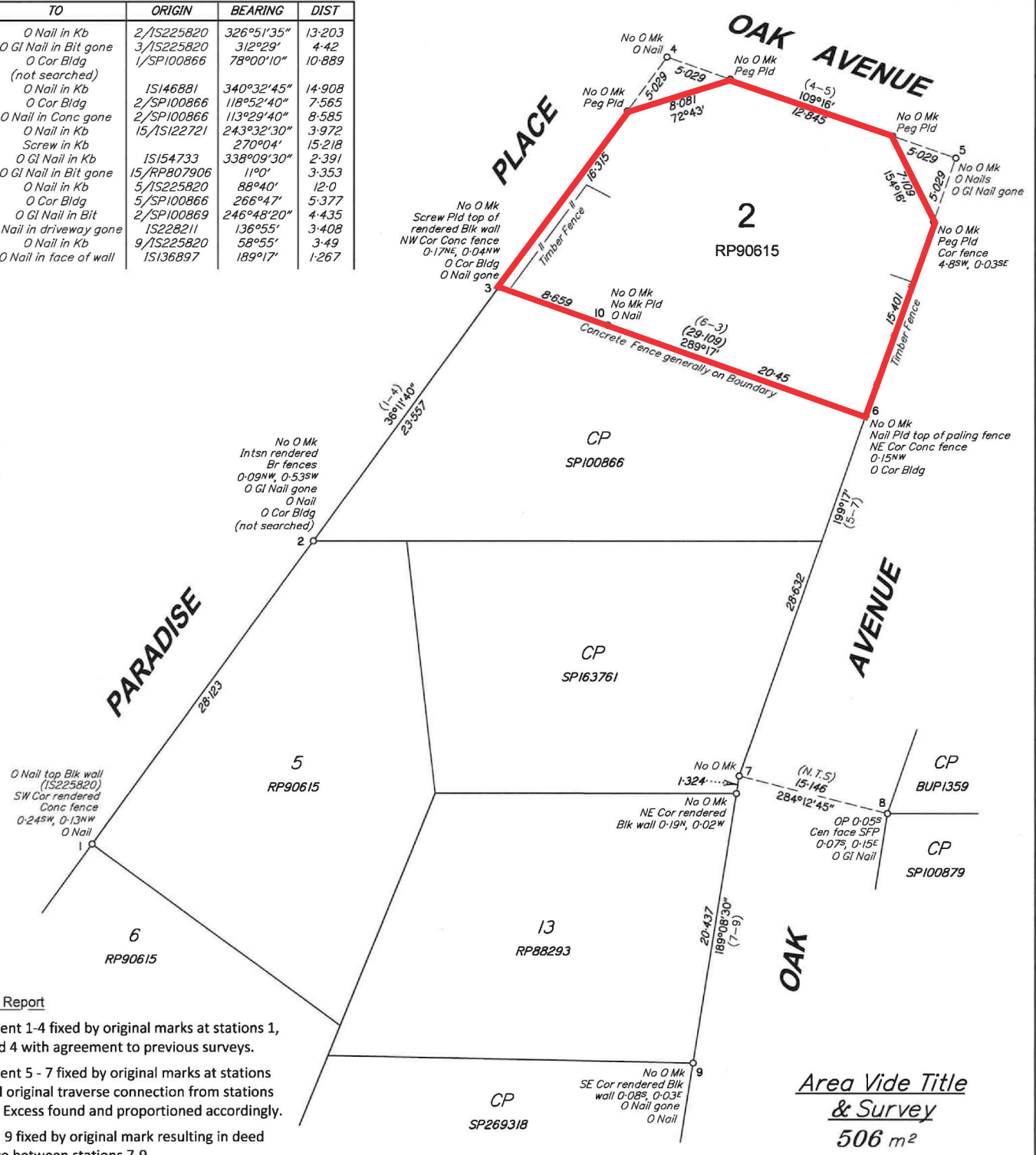
**Balcony & Patios 45.6m<sup>2</sup>**

**Total 229.9m<sup>2</sup>**



REFERENCE MARKS

STN	TO	ORIGIN	BEARING	DIST
1	O Nail in Kb	2/IS225820	326°51'35"	13-203
2	O GI Nail in Bit gone	3/IS225820	312°29"	4-42
	O Cor Bldg	1/SP100866	78°00'10"	10-889
	(not searched)			
2	O Nail in Kb	IS146881	340°32'45"	14-908
3	O Cor Bldg	2/SP100866	118°52'40"	7-565
3	O Nail in Conc gone	2/SP100866	113°29'40"	8-585
4	O Nail in Kb	15/IS122721	243°32'30"	3-972
4	Screw in Kb		270°04'	15-218
5	O GI Nail in Kb	IS154733	338°09'30"	2-391
5	O GI Nail in Bit gone	15/RP807906	11°0'	3-353
5	O Nail in Kb	5/IS225820	88°40'	12-0
6	O Cor Bldg	5/SP100866	266°47'	5-377
8	O GI Nail in Bit	2/SP100869	246°48'20"	4-435
9	O Nail in driveway gone	IS228211	136°55'	3-408
9	O Nail in Kb	9/IS225820	58°55'	3-49
10	O Nail in face of wall	IS136897	189°17'	1-267



Survey Report

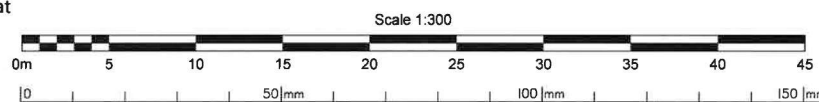
Alignment 1-4 fixed by original marks at stations 1, 2, 3 and 4 with agreement to previous surveys.

Alignment 5 - 7 fixed by original marks at stations 5,6 and original traverse connection from stations 8 to 7. Excess found and proportioned accordingly.

Station 9 fixed by original mark resulting in deed distance between stations 7-9.

Resultant alignments 4-5 and 3-6 generally in agreement with previous surveys, reinstatement of stations 3-6 supported by original mark found at station 10.

Area Vide Title  
& Survey  
506 m<sup>2</sup>



B.B.H. PTY. LTD. (ACN 010 427 531) (trading as Bennett and Bennett Group) hereby certify that the land comprised in this plan was surveyed by the corporation, by Benjamin Llewellyn Rhys Blackburn, Surveying Associate, for whose work the corporation accepts responsibility, under the supervision of Wayne Anthony Hayes, Cadastral Surveyor, and that the plan is accurate, that the said survey was performed in accordance with the Survey and Mapping Infrastructure Act 2003 and Surveyors Act 2003 and associated Regulations and Standards and that the said survey was completed on 17/2019.



PO Box 5021, GCMC QLD 9726  
Ph: (07) 5631 8000 | mail@bennettandbennett.com.au  
Surveying, Town Planning & Spatial Services  
www.bennettandbennett.com.au

**BENNETT + BENNETT**

Identification Survey Plan  
of Lot 2 on RP90615

Meridian IS225820  
Orig Por. Por 32

CLIENT  
**WRA PROPERTY SERVICES**

Locality  
SURFERS PARADISE

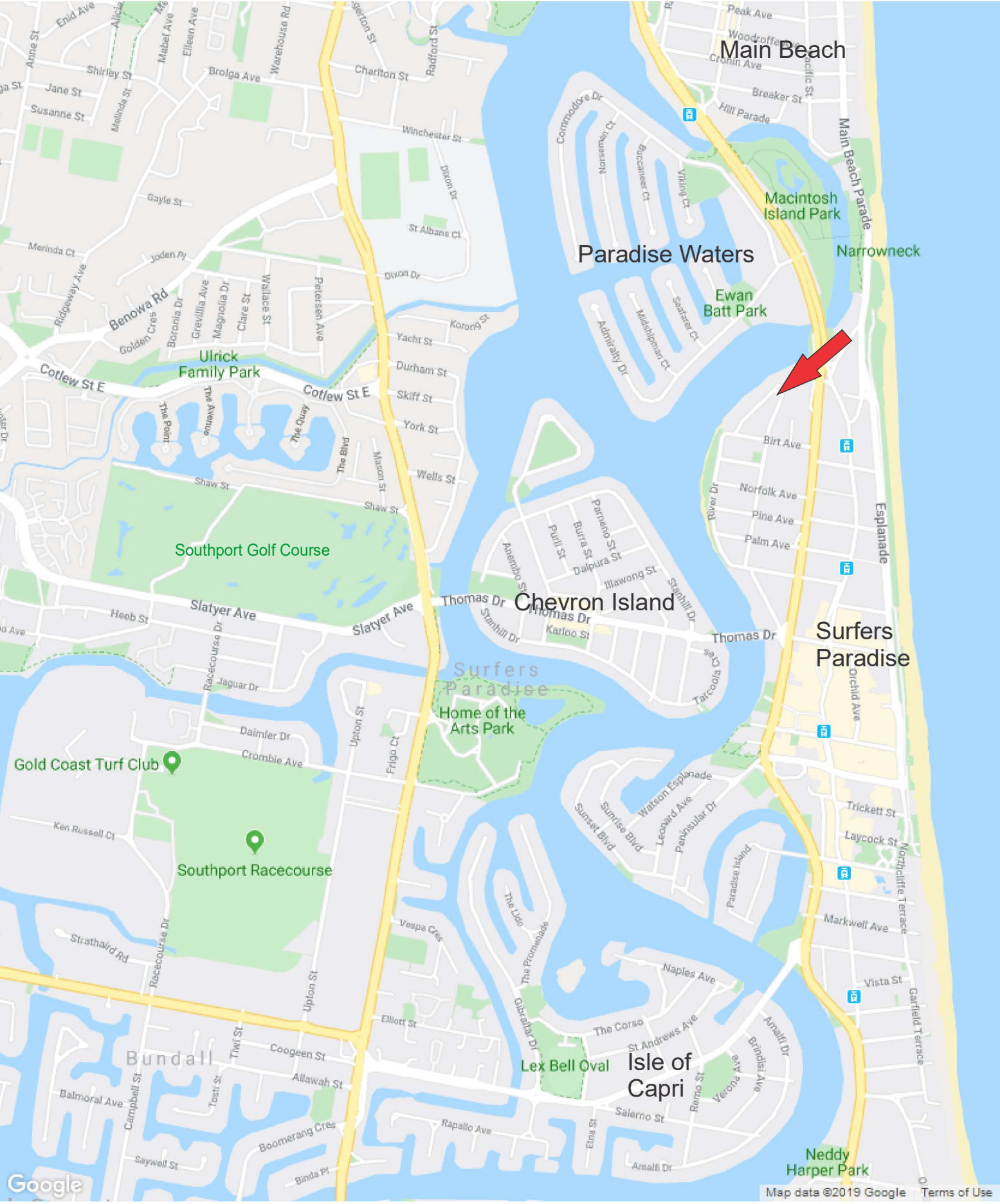
Local Auth.  
GOLD COAST CITY COUNCIL

Map Ref 9542-22322 Scale 1:300

Drawn SDS  
Plan No. 190680\_001\_IDENT

**IS283495**

# Map - 15 Paradise Place, Surfers Paradise



# 15 Paradise Place, Budds Beach

