

+ MAKING SPACE FOR GREATNESS

Goodman



SPACE FOR WORKPLACE HAPPINESS

Pacific View Business Park
10 Rodborough Road
Frenchs Forest, NSW

Flexible spaces



Pacific View Business Park is a high profile commercial estate, conveniently located close to public transport, Warringah Mall and surrounding amenities.

Office suites are now available for lease from 148–257 sqm with flexibility to create your own space.

VIEW FROM ABOVE



SYDNEY CBD

Wakehurst Parkway

Allambie Road

Warringah Road

Frenchs Forest Road

Pacific View Business Park

NORTHERN BEACHES HOSPITAL



Located right by Warringah Road, the estate provides easy access to Chatswood, North Shore and the Northern Beaches.

Multiple bus routes service the area and new shared-path bridges across Warringah Road and Hilmer Street improve pedestrian/ bicycle access to the area.

POSITIVELY
CONNECTED

EASY ACCESS

20M

to nearest gym

4KM

to Warringah Mall

300M

to Warringah Road

10KM

to Chatswood

1KM

to aquatic centre

18KM

to Sydney CBD

3KM

to Forestway
Shopping Centre

NEARBY AMENITY AND SERVICES



Work/life balance

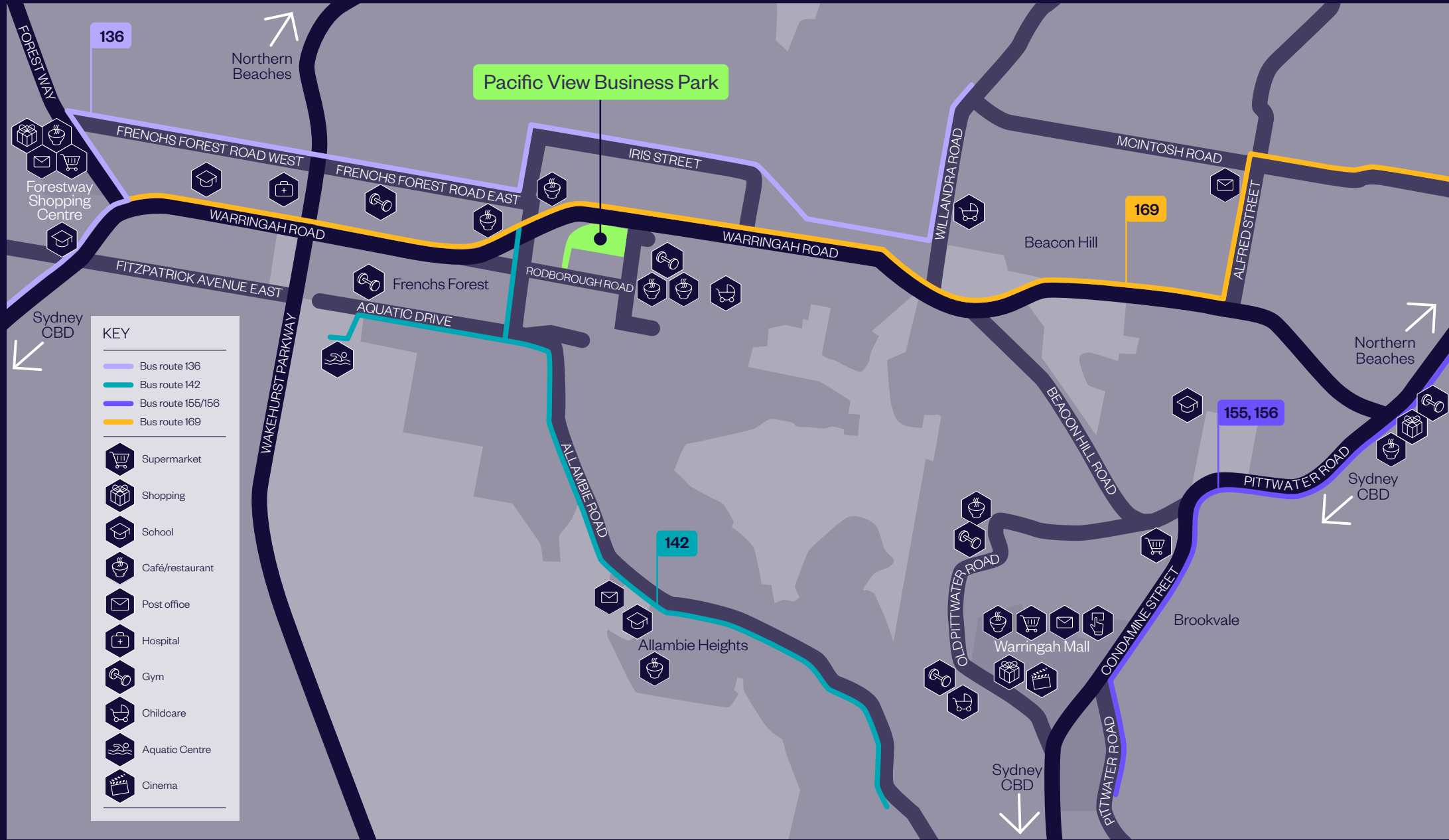
Staff can maintain a positive work/life balance with easy access to Chatswood, the Northern Beaches, and a variety of amenities within walking distance.

A Virgin Active gym next door to the estate boasts cutting edge equipment, a 25m swimming pool, spa and sauna, plus a kids club.

A 5 minute drive from the estate, Forestway Shopping Centre offers a variety of cafés and restaurants, supermarkets, retail stores and services.



ACCESS



KEY

- Bus route 136
- Bus route 142
- Bus route 155/156
- Bus route 169
- Supermarket
- Shopping
- School
- Café/restaurant
- Post office
- Hospital
- Gym
- Childcare
- Aquatic Centre
- Cinema

FEATURES

Modern workspace

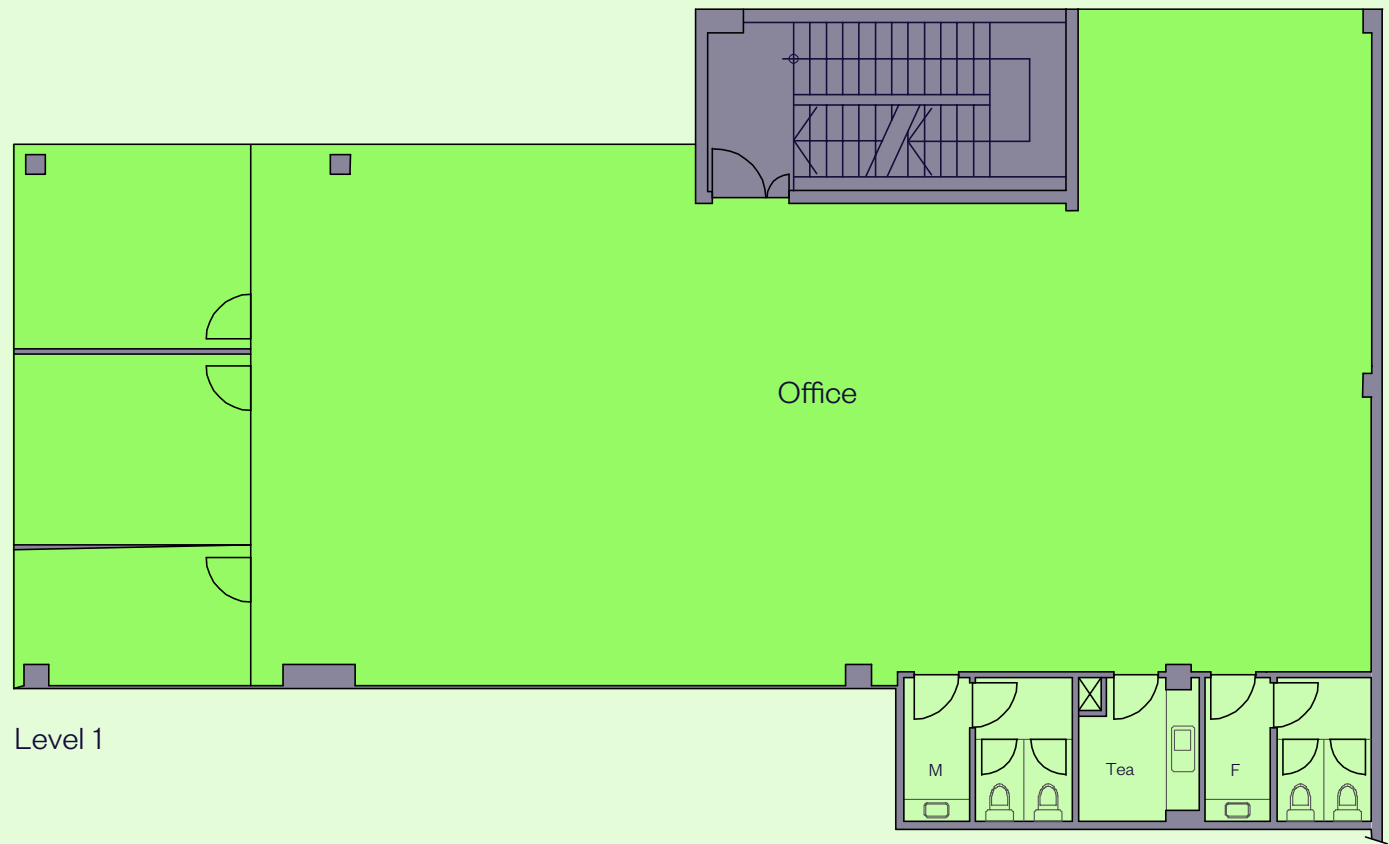
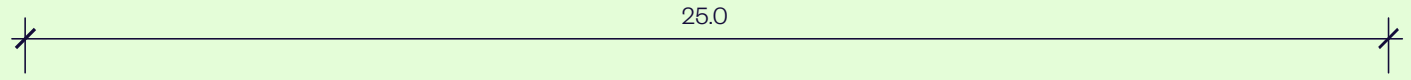
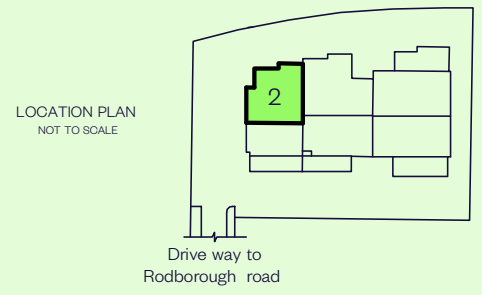
- + Modern office suites available from 148-257 sqm
- + Landscaped estate
- + Great parking ratio
- + Dual street frontage to Rodborough and Warringah Roads
- + Excellent brand exposure with signage opportunities facing Warringah Road.



UNIT 2, LEVEL 1 PLAN

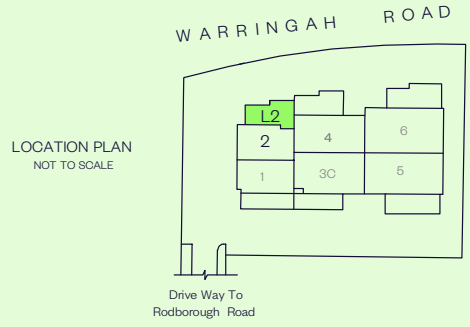
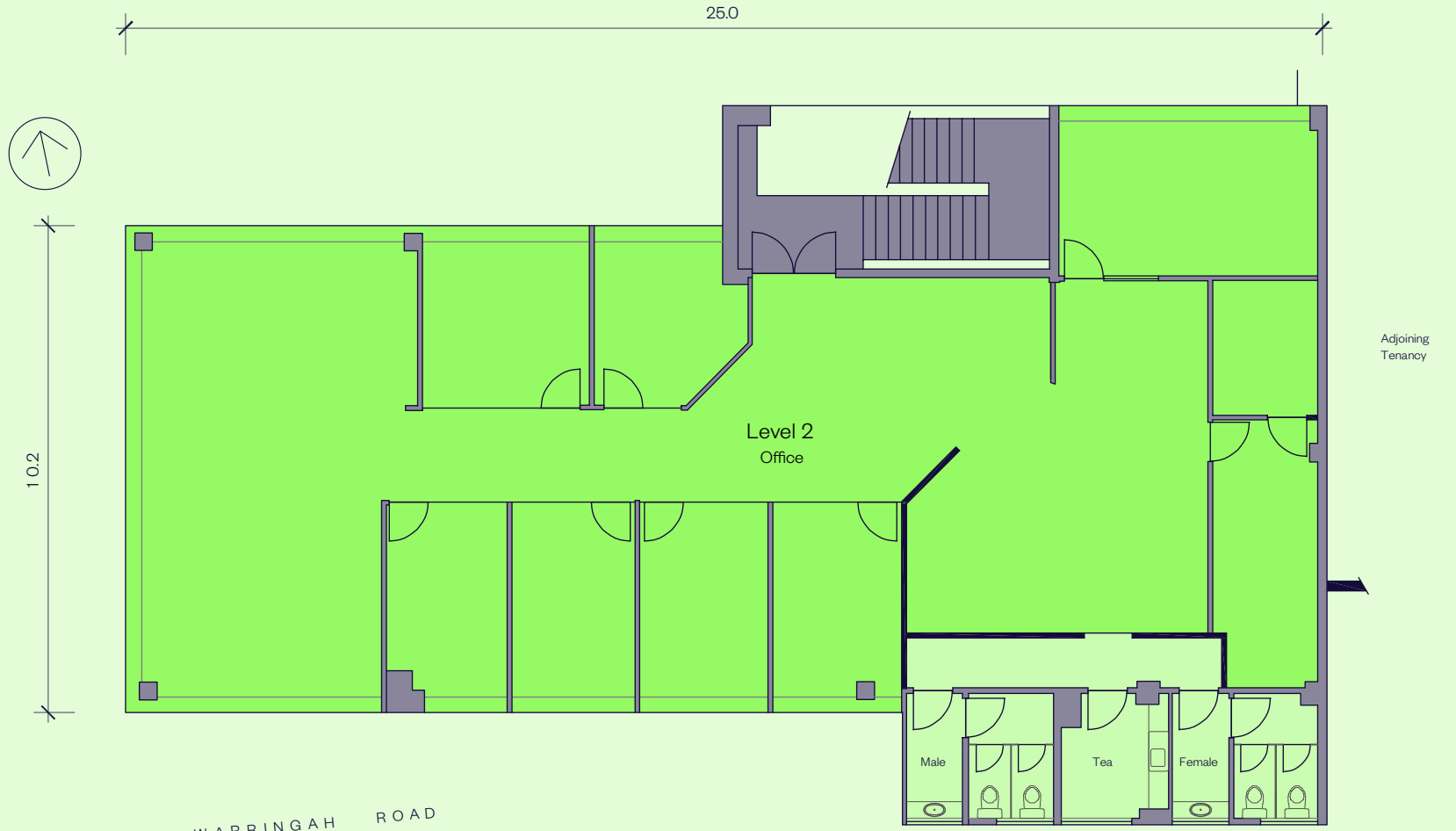
AREA SCHEDULE	SQM
Office	252.6
Amenities (exclusive use)	23.7
Total area	276.3

WARRINGAH RD



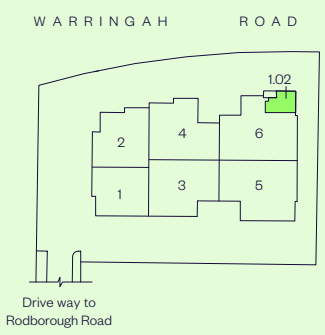
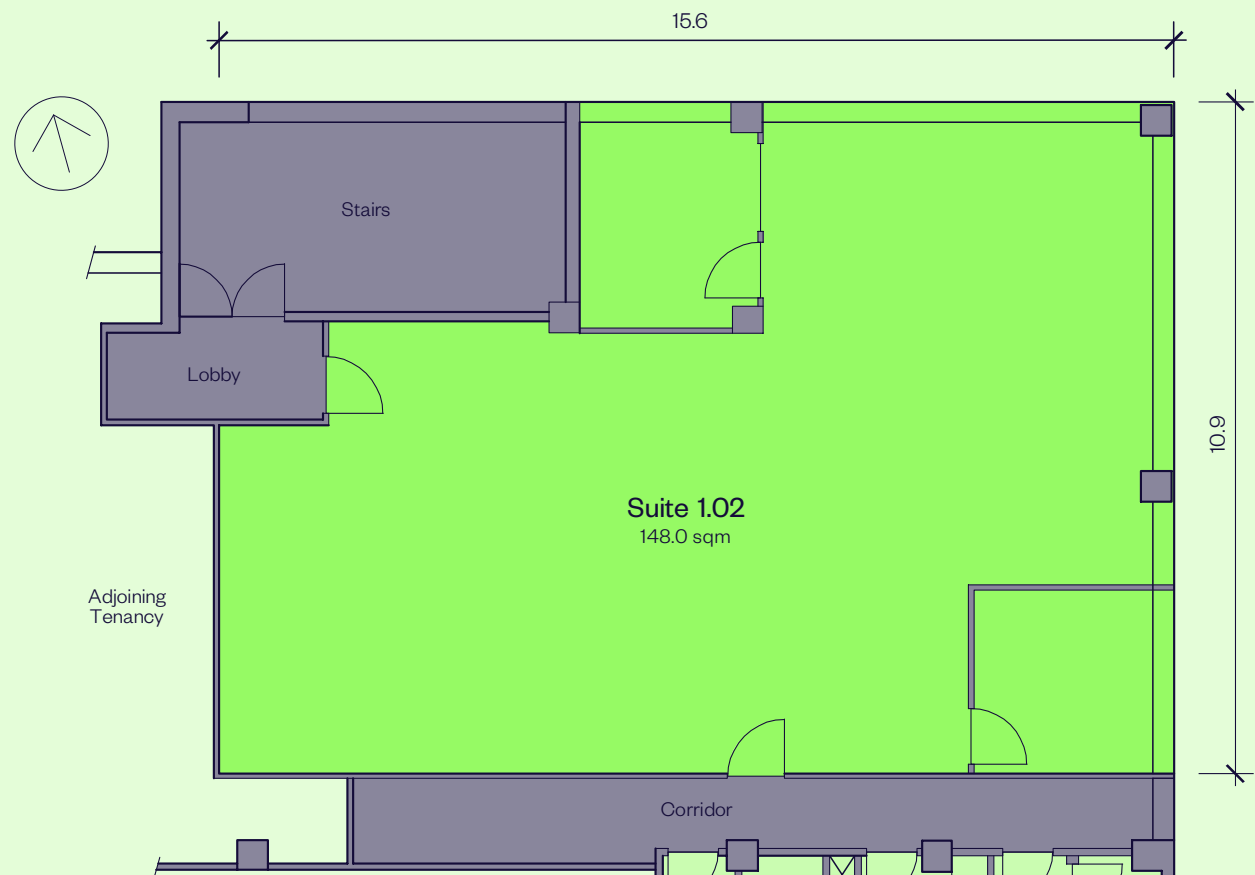
UNIT 2, LEVEL 2 PLAN

AREA SCHEDULE	SQM
Office	256.5
Amenities	23.5
Total area	280.0



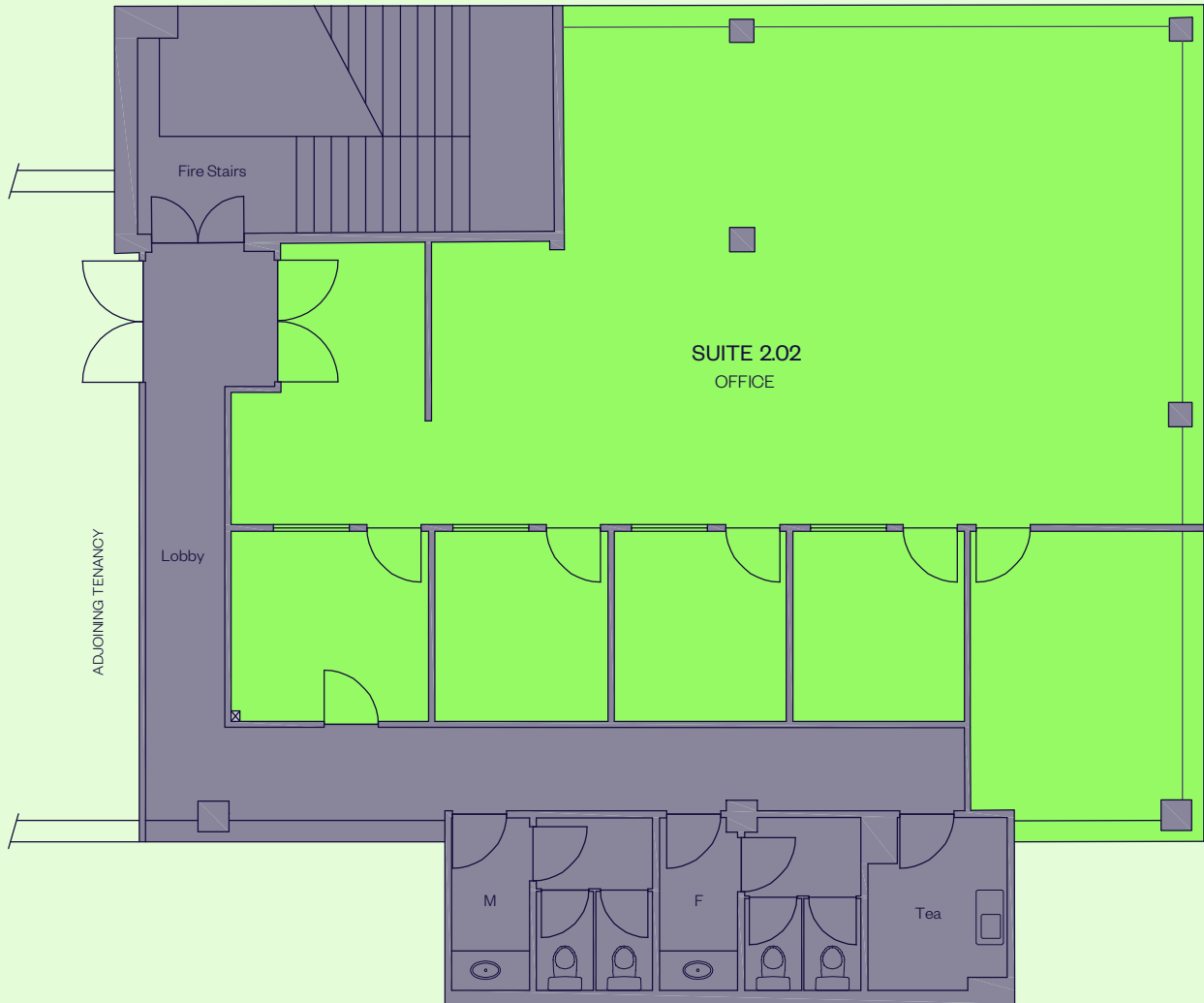
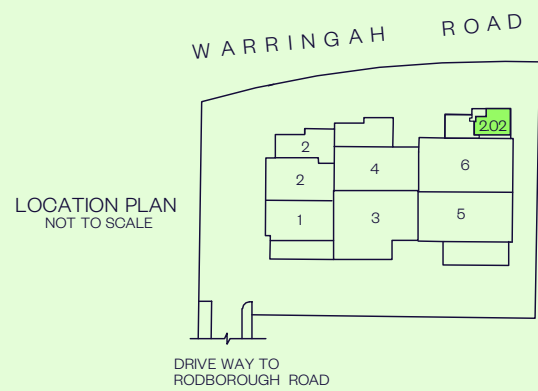
UNIT 6, SUITE 1.02 PLAN

AREA SCHEDULE	SQM
Office	148
Amenities	23.5
Total area	280.0



UNIT 6, SUITE 2.02 PLAN

AREA SCHEDULE	SQM
Office	147.9
Total area	147.9



Our teams provide progressive insights to business needs in an ever-changing world



SERVICE



Customer focus

Dedicated Building Managers provide on-site support for day-to-day operations, while Property and Asset Managers are available to discuss leasing, administration or modifications to tenancies.

Presentation

Our property services teams attend to your operational needs and provide unparalleled maintenance and presentation standards.

Sustainability



We aim to be leaders in environment, social and governance – with a long-term, sustainable approach that leads to positive economic, environmental and social outcomes for our business, our stakeholders and the world more broadly.

Here's a snapshot of some of our initiatives across our Australian portfolio.

Procurement

To ensure the products and services we purchase don't harm people or the planet, we're working step-by-step with our suppliers and contractors. On the horizon are clear targets and minimum expectations for our supply chain partners. But for now, we are working together to set a baseline and understand obstacles and opportunities.



Climate resilience

Goodman has several control measures in place to futureproof our portfolio, keep our customers safe, and mitigate against the risks of climate change. These measures include inspections of structure and façade, roof audits, landscape maintenance and potable water monitoring.

Solar

We have installed over 24MW of rooftop solar on approximately 170 of our properties in Australia. That's more than 60,000 solar panels – enough to power 6,000 homes, or the equivalent of taking 15,800 passenger vehicles off the road.

LED lighting + motion sensors

100% of the portfolio will have LED lighting and motion sensors installed by end June 2024. This will reduce energy consumption and provide optimum lighting comfort for our customers

Smart meters

Smart meters help to manage electricity consumption by providing regular data related to interval electricity usage.

Electric vehicle future

Goodman recognises our role in preparing our estates and our customers for an EV future. We're supporting the switch to EVs by building a green fleet, encouraging our people to purchase EVs, providing dedicated EV bays and charge points at all new developments, and collaborating with our customers.

Sustainable landscaping

- + We have installed tanks to harvest rainwater
- + Our properties use smart water metering that allows easy access to irrigation programs via a smart device, such as a mobile phone
- + From December 2022 all handheld equipment used in landscaping and cleaning work at our properties will be battery operated



- + We use drought tolerant plants combined with ballast rock
- + A green waste recycling pilot project on several of our properties processed an estimated 500 cubic metres of green waste in just six months. The trial was so successful that we will roll out green waste recycling across all of our properties in November 2022
- + At Eastern Creek in NSW, we have constructed a fully sustainable garden comprising 23 edible garden beds with stingless native bees, compost, worm farm and permaculture practices
- + We have been trialling a new steam weed control which surpasses the chemical Glyphosate. We're working closely with the manufacturer to improve the efficacy and portability so we can use it more widely.

INCLUSION AND DIVERSITY

Central to our purpose of “making space for greatness” is creating an environment where I&D is embedded into everything we do.

We work to create a culture where our people are valued and have the opportunity to realise their potential.

We are all accountable for making it a reality. Our people are champions of openness, fairness and respect.



At Goodman, we lead the way in inclusion and diversity.

FIRST NATIONS ENGAGEMENT



We acknowledge the Aboriginal and Torres Strait Islander Traditional Custodians of the land on which we work and live. We pay respect to Elders past, present and emerging. We value their custodianship of 65,000 years.



As a business that works across many locations, we have a responsibility to listen, learn and walk alongside First Nations peoples to ensure our activities support the continuing of connection to their land, waters, cultures, language and traditions.

Goodman has been moving through the Reflect stage of our Reconciliation Action Plan (RAP). A RAP is designed to provide tangible and genuine benefits for Aboriginal and Torres Strait Islander peoples around the core pillars of relationships, respect and opportunities. Like anything we do, it's important that our first RAP is authentic and ambitious—we're determined to make a difference.

GOODMAN FOUNDATION

The Goodman Foundation unites our people, properties and resources to make a tangible difference to the lives of people in our communities. Through our partnerships with an exceptional – and often grassroots – group of charities, we’re able to make a real difference, where and when it matters most.



Above: Clontarf Foundation
Bottom L-R: Clontarf Foundation, Thread Together, Bestest Foundation

How we do good in the world

The Goodman Foundation offers support to charities within three key areas:

Children and youth

Charity organisations who help protect, nurture and support children or young people.

Food rescue and environment

Charity organisations who reduce waste and support those in need by redistributing fresh food or useful items that would otherwise go to landfill.

Community and community health

Charity organisations who support those living with a condition, illness or disability, or whose efforts help to create a more inclusive and equitable community.

LEARN MORE ABOUT THE GOODMAN FOUNDATION



CONTACT



GET IN TOUCH

Flynn Doolan
Property Manager
T. 02 9230 7170
M. 0481 550 180
flynn.doolan@goodman.com

Renee Cullen
Portfolio Manager
T. 02 9230 7431
M. 0404 587 955
renee.cullen@goodman.com

Goodman
The Hayesbery
1-11 Hayes Road
Rosebery NSW 2018
T. 02 9230 7400

[VIEW THIS PROPERTY ONLINE](#)

