

Prime Street Front Premises For Sale - Only \$375,000

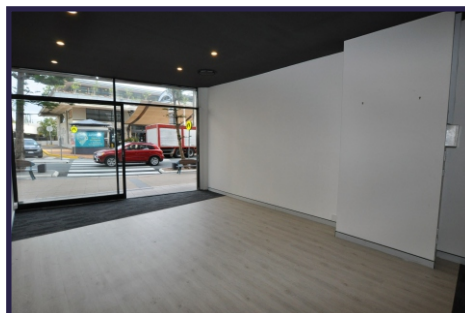
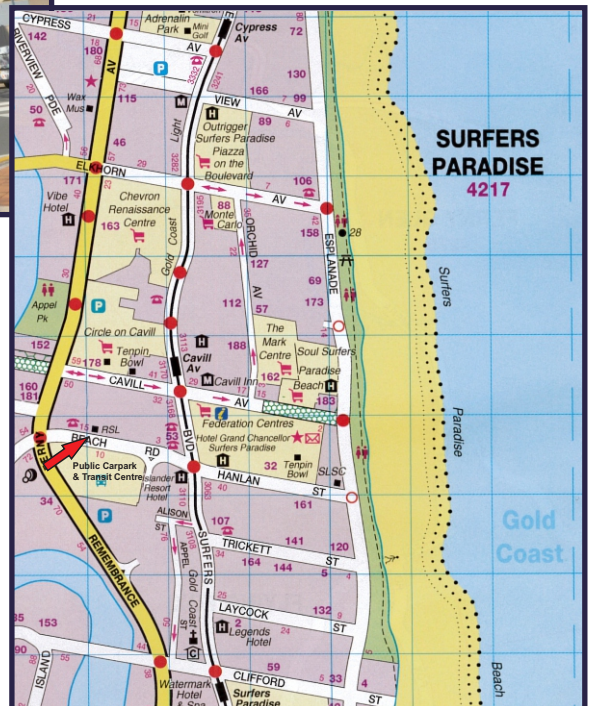


Retail Shop - 33m²

Directly Opposite
Large Car Park

9 Beach Road, Surfers Paradise

- A rare opportunity to secure an ideal dual entry commercial/retail position in the heart of the Surfers Paradise corporate sector.
- Join other long standing successful tenancies including Subway, You Japanese Restaurant, G-Clef Restaurant/Bar, major office tenancies plus the revamped Diggers Sports Bar and RSL Club.



Dual Street
and
Arcade Entry

Major Renovation Undertaken to Building

view more at www.wrappropertieservices.com

For enquiries, professional & confidential service

Phone Wayne Robbie on

(07) 5592 3180 or 0419 772 867



9 Beach Road, Surfers Paradise
BUP



Cavill Park

CAVILL AVENUE

