



*\*Photographs are indicative of final design*

## Suite 9.02

25 Bligh Street, Sydney CBD

NLA : 88.5 m<sup>2</sup>  
Available: Dec 2022

## KINGSMEDE

Contact Sarah

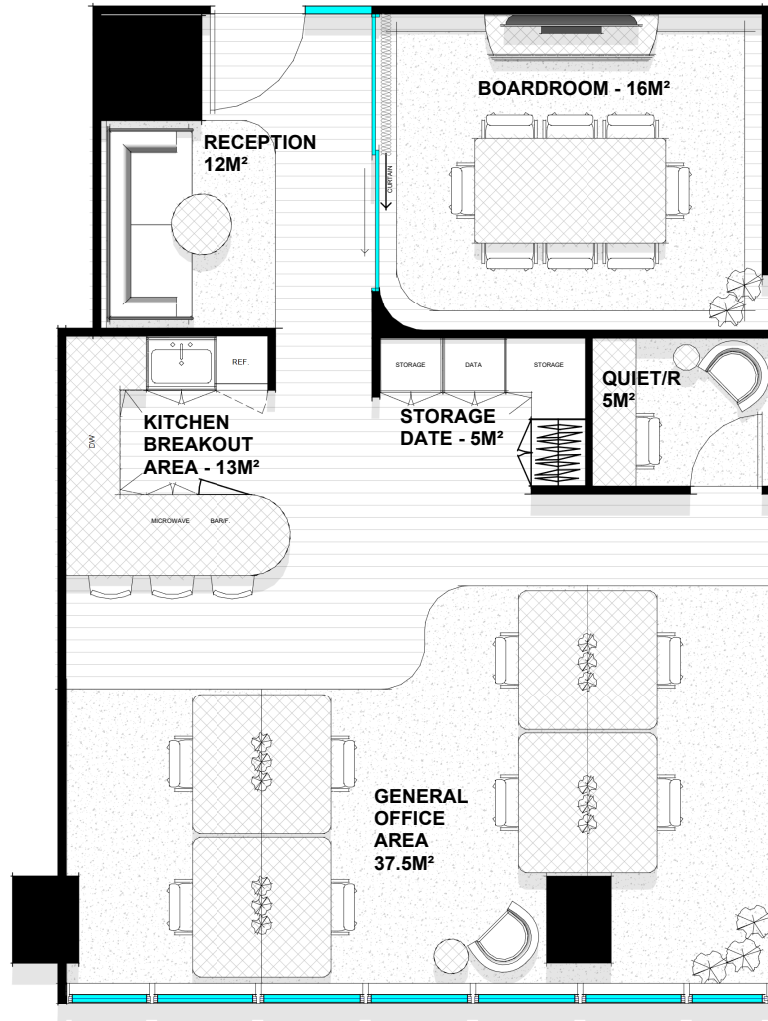
0421 133 848  
[swillcox@kingsmede.com.au](mailto:swillcox@kingsmede.com.au)



*\*Photographs are indicative of final design*

# Suite 9.02

- Reception & Meeting area
- Kitchen and breakout area
- Large boardroom
- Quiet Room
- Open plan space for general office area
- Prime CBD location
- Excellent transport links
- Full squash court and end of trip facilities (due H2)



Bligh Street

## LET'S CLEAR THE AIR

At 25 Bligh Street the air is different!

We are committed to ensuring better air quality not just in our building but for the environment also. You can breathe easy as our state of the art air-conditioning systems filter 99% of all air particles.

We also pledge that for every person that joins us, we'll plant one tree.

Join us and make a difference.

