

ALLAN STREET

42.67m

4.32m

108 Daws Road, Melrose Park

ESTIMATED GROSS LETTABLE AREA

Office / Showroom:	664 sq.m
Low Clearance Workshop:	816 sq.m
High Clearance Workshop:	478 sq.m

TOTAL GROSS LA: 1958 sq.m

56.39m

1109-1111 South Road, Melrose Park

ESTIMATED GROSS LETTABLE AREA

Office:	108 sq.m
Workshop:	1416 sq.m
Shed:	135 sq.m

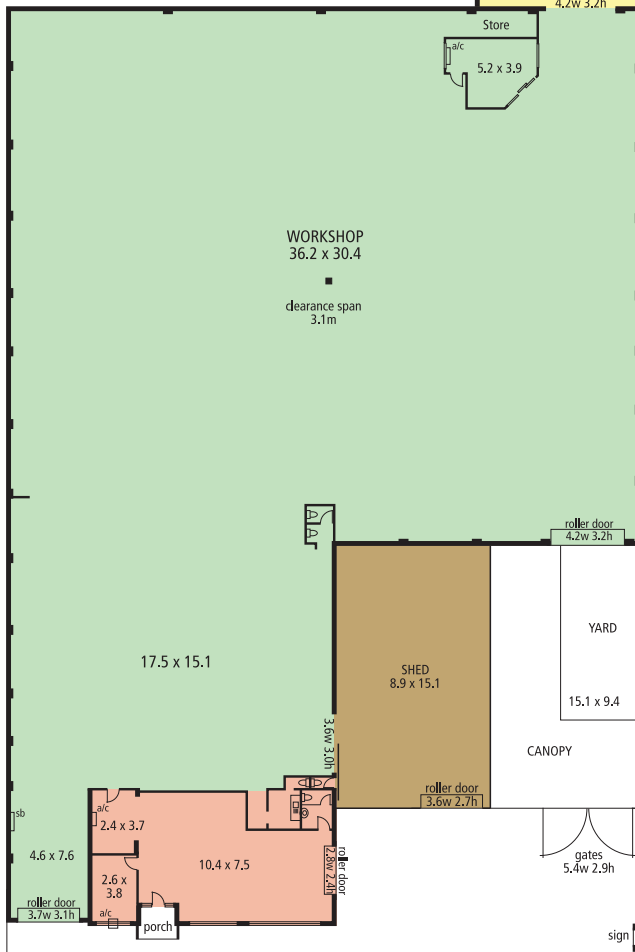
TOTAL GROSS LA: 1659 sq.m

27.52m (approx)

36.68m (approx)

**ROAD
DAWS**

53.34m



36.56m

SOUTH ROAD



Site Area: 4565 sq.metres

*approximate only - not surveyed

Complies with the
PCA Method of Measurement



0 5 10 15m 30m