



Stanthorpe Plaza Shopping Centre

124 High Street,
Stanthorpe QLD 4380

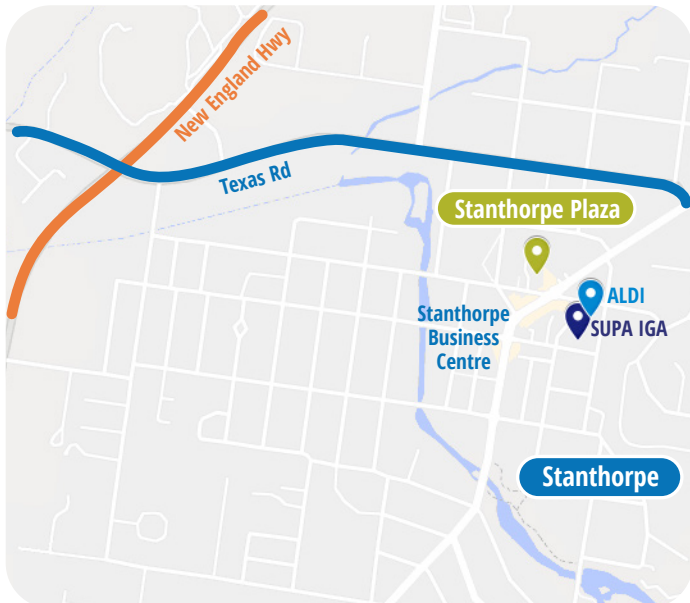


Newly redeveloped, Stanthorpe Plaza is centrally located in the heart of Stanthorpe town centre.

- Stanthorpe Plaza provides the local population with a convenient neighbourhood shopping centre
- A redevelopment of the centre is expected to begin early 2021
- The redevelopment will provide for interior and exterior upgrades, with a new entrance, shopfronts, restrooms, car park shade sails, signage, and a natural, modern aesthetic
- Leasing opportunities available for takeaway food, health foods, services, beauty/cosmetic services, clothing, tech and other specialty retail
- Stanthorpe Plaza is the only enclosed shopping centre in the trade area
- Great opportunity to be part of a thriving and growing region
- Significant infrastructure planned for the region, including Emu Swamp Dam and MacIntyre Wind Farm
- Expanded and refurbished Woolworths Supermarket

Local Context

- 217km (approximately 2hr 45min drive) from Brisbane CBD
- Stanthorpe is a major town in Queensland's Granite Belt, serving a diverse area that supports agriculture, retail, healthcare, tourism, and a growing wine industry
- Close proximity to the new England Highway
- Ample on-site parking
- Centrally located in the Stanthorpe business district, in close proximity to schools, civic centre and community services



Stanthorpe Plaza Trade Area

Population & People	Stanthorpe Region
Estimated Resident Population - Persons (no.)	11,435
Median age	47.6
Income	
Median equivalised total household income (weekly) (\$)	604
Education & Employment	
Unemployment rate	6.2

Statistics sourced from: Australian Bureau of Statistics 2016 - 2019



Stanthorpe Plaza Trade Area (cont'd)

Economy & Industry

Home ownership	63.7%
Main employing Industry: Agriculture, forestry and fishing (%)	27.1%

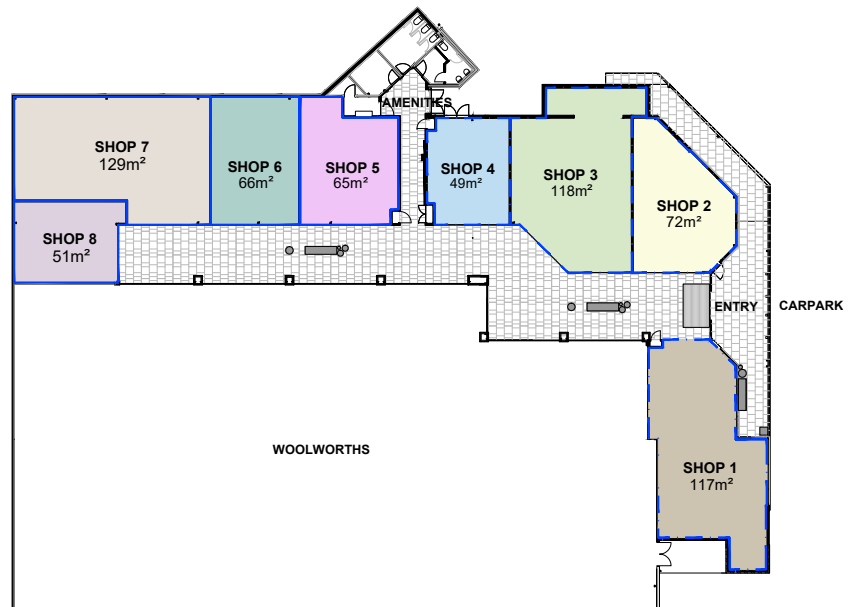
Median Weekly Incomes

Employed people aged 15 and over	Stanthorpe	Australia
Personal	\$493	\$662
Family	\$1,172	\$1,734
Household	\$872	\$1,438

Household Income		
Less than \$650 gross weekly income	32.1%	20.0%
More than \$3,000 gross weekly income	4.0%	16.4%

Statistics sourced from: Australian Bureau of Statistics 2016 - 2019

Centre Plan



Approx number of car parking spaces	130
-------------------------------------	-----

Contact for Further Information:

Mark Long

M 0407 781 157 **E** mark@allureretail.com.au

Subject to the Australian Consumer Law, Competition and Consumer Act 2010 and any similar legislation applying in Queensland (to the extent that they and any other statutory provisions may not be excluded), Allure Retail for itself and for its related companies, gives notice that any information given in relation to the property contained in this document is gathered from sources Allure Retail believes to be reliable. However, Allure Retail does not represent or guarantee its accuracy. Intending lessees, occupiers or interested parties must verify and satisfy themselves as to the accuracy of all information given by undertaking their own investigations, surveys of building and floor areas, searches and enquires (including without limitation, as to zoning, town planning and use), and obtaining their own advice. This document is not intended to be relied on by intending lessees, occupiers or interested parties. Allure Retail, its related companies or its servants, agents or employees makes, or has authority to make or give any representation or warranty or to state any matters of fact or opinion in relation to the information contained in this document.