

Λ V R Λ

P R E C I N C T

135-155 CURLEWIS STREET, BONDI BEACH

Created By Clutch.

A new premium
retail precinct set
footsteps from
Australia's iconic
Bondi Beach



The Opportunity

PRECINCT RETAIL & RADIUS PROPERTY ARE SEEKING EXPRESSIONS OF INTEREST FOR A RARE AND EXCEPTIONAL OPPORTUNITY IN BONDI BEACH—ONE OF AUSTRALIA'S MOST ICONIC NEIGHBOURHOODS.

THIS EXCLUSIVE PRECINCT IS ANCHORED BY SAINT HAVEN, AUSTRALIA'S PREMIER HEALTH & WELLNESS DESTINATION, SETTING A NEW STANDARD IN LUXURY WELLNESS AND LIFESTYLE EXPERIENCES.

[VISIT OUR WEBSITE](#)



Elevate your brand

Located just steps from the iconic Bondi Beach, these exclusive retail spaces offer an unparalleled opportunity for businesses looking to make their mark in a world-class location.

With only one retail space remaining, you can create a truly unique destination that sets you apart.

Secure your place with prime street frontage, and position your brand in one of Sydney's most sought-after settings.





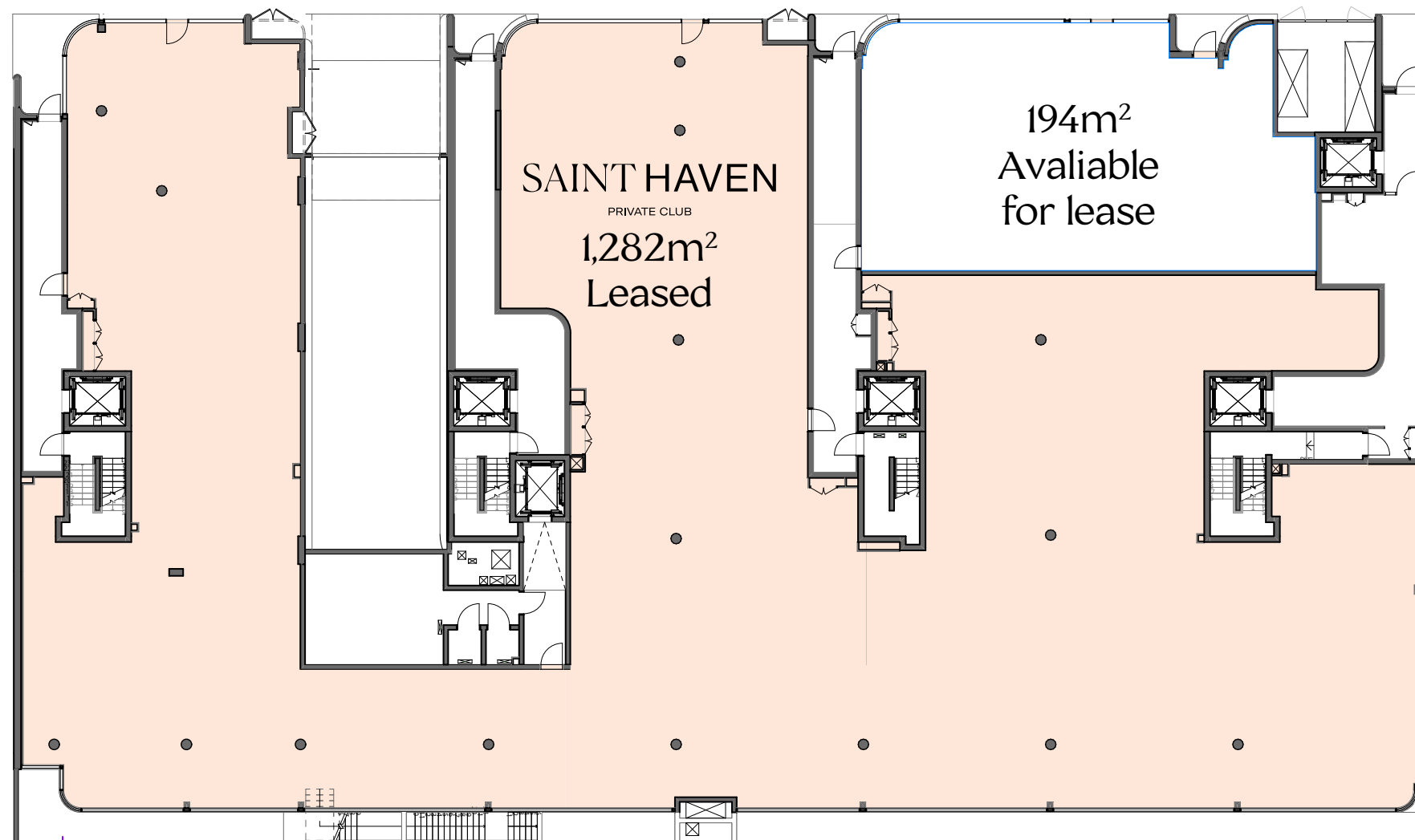
Available Retail Space

Steps from the sand

AVRA's gentle presence signals the sanctuary within, inspired by the movement of sand and water across Bondi Beach's landscapes. The building's concrete blades, curved architectural forms and ethereal screens honour the shapes, colours and textures of nature and the coast.

Retail One - Leased

Health and Wellness Space.
87% of total retail space leased.



SAINT HAVEN

PRIVATE CLUB



SAINT HAVEN

PRIVATE CLUB

Saint Haven is a premier private wellness club, offering an unparalleled blend of luxury, holistic health, and social connection. Founded by Tim Gurner, the club boasts multiple locations, including Collingwood, Toorak, and South Yarra and soon to be Bondi Beach in AVRA.

Designed to resemble an immersive retreat, the interiors feature earthy limestone, aged brass, and candlelit corridors.



Retail Two

A 194sqm space with an expansive **17.5m** frontage, offering an exceptional opportunity to establish a landmark dining destination in a premier location.



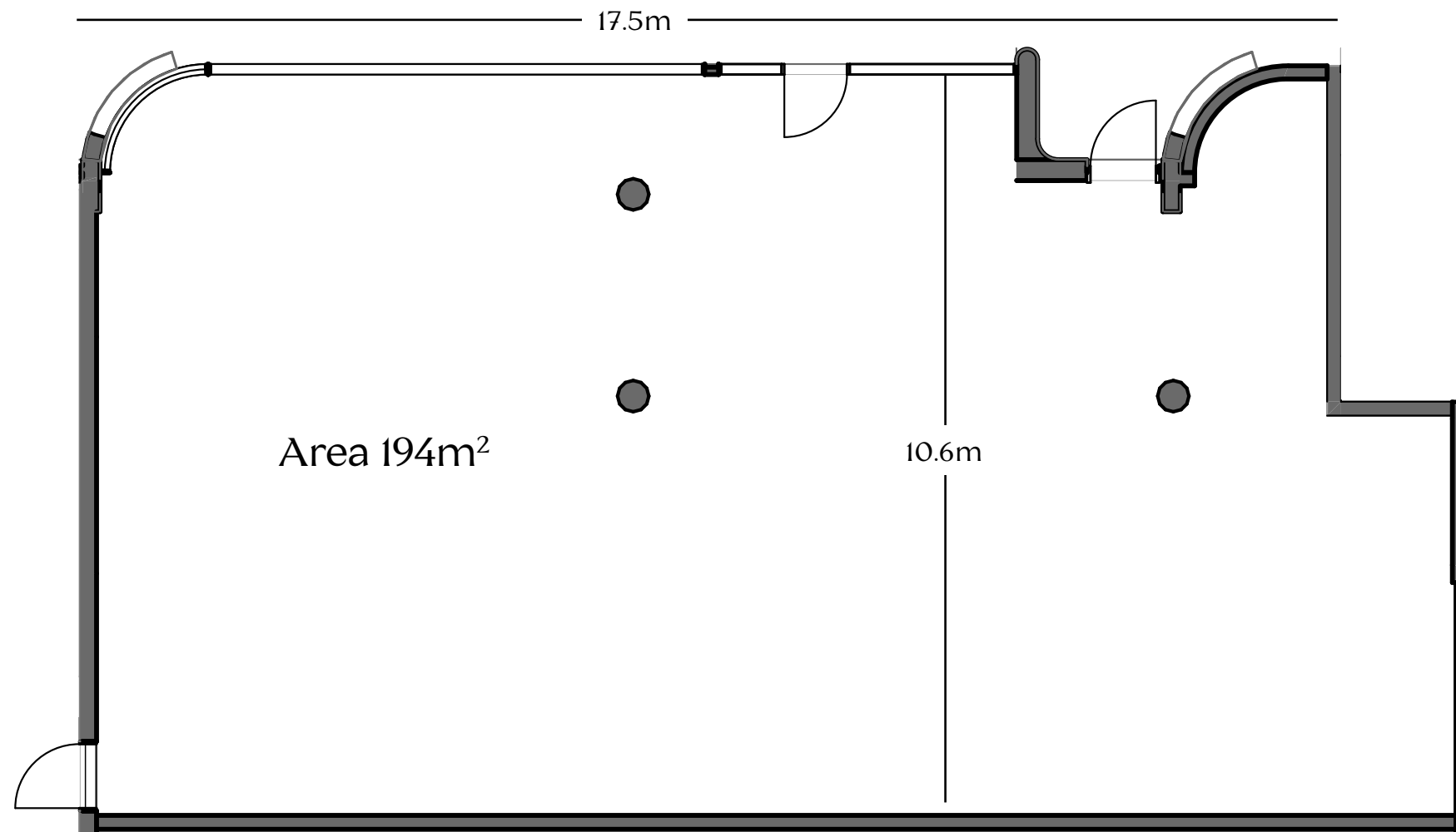
Floor Plate 194sqm



Street Frontage 17.5m



Endless Potential



Flexible Option

-

Retail Two & Retail Three



Retail 2
Floor Plate 60sqm



Street Frontage 5.5m



Retail 3
Floor Plate 134sqm

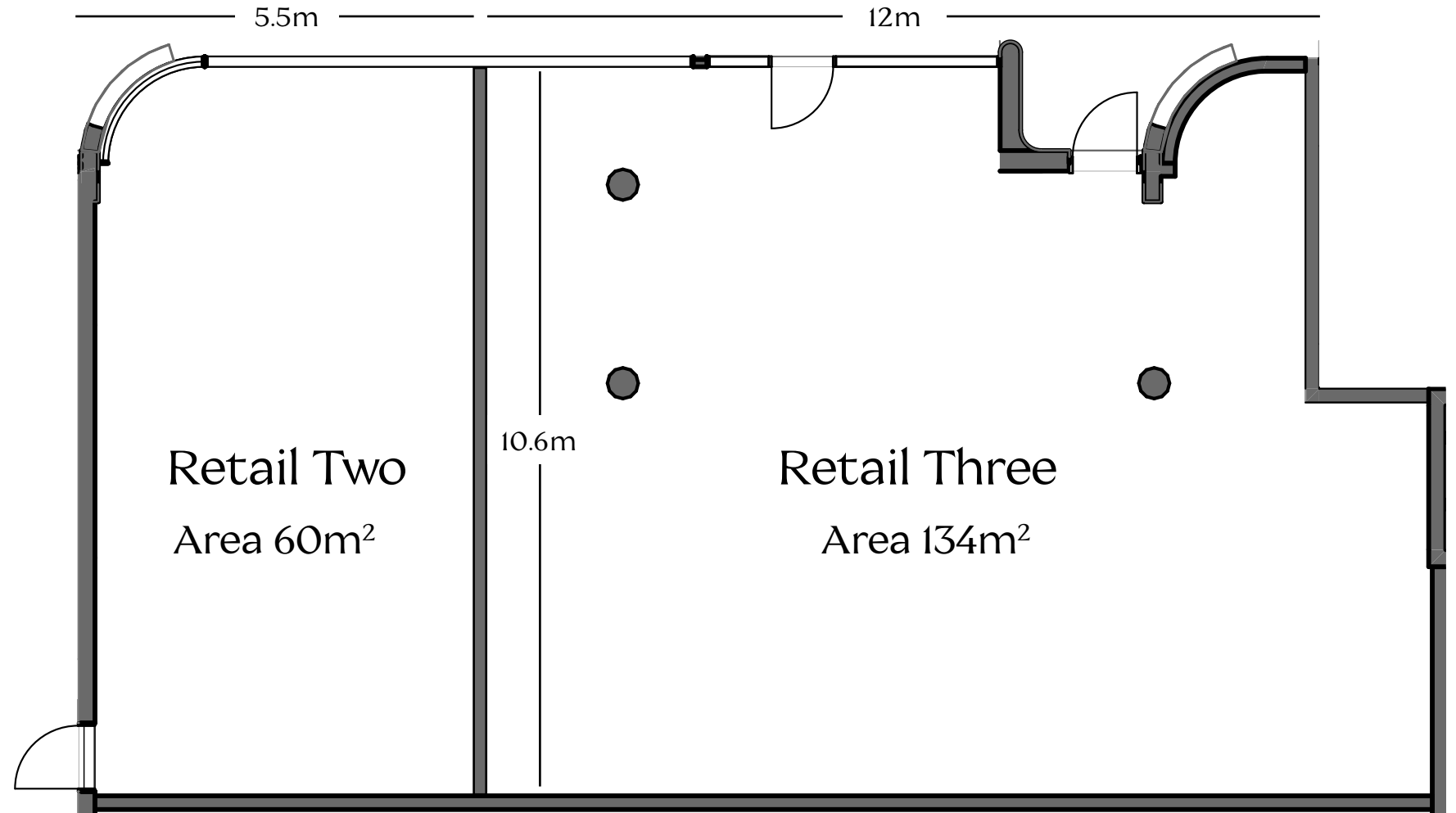


Street Frontage 12m




Endless Potential

* All areas are approximate




Flexible Option 2


Retail Two, Retail Three & Retail Four

 Retail 2
Floor Plate 60sqm


 Street Frontage 5.7m

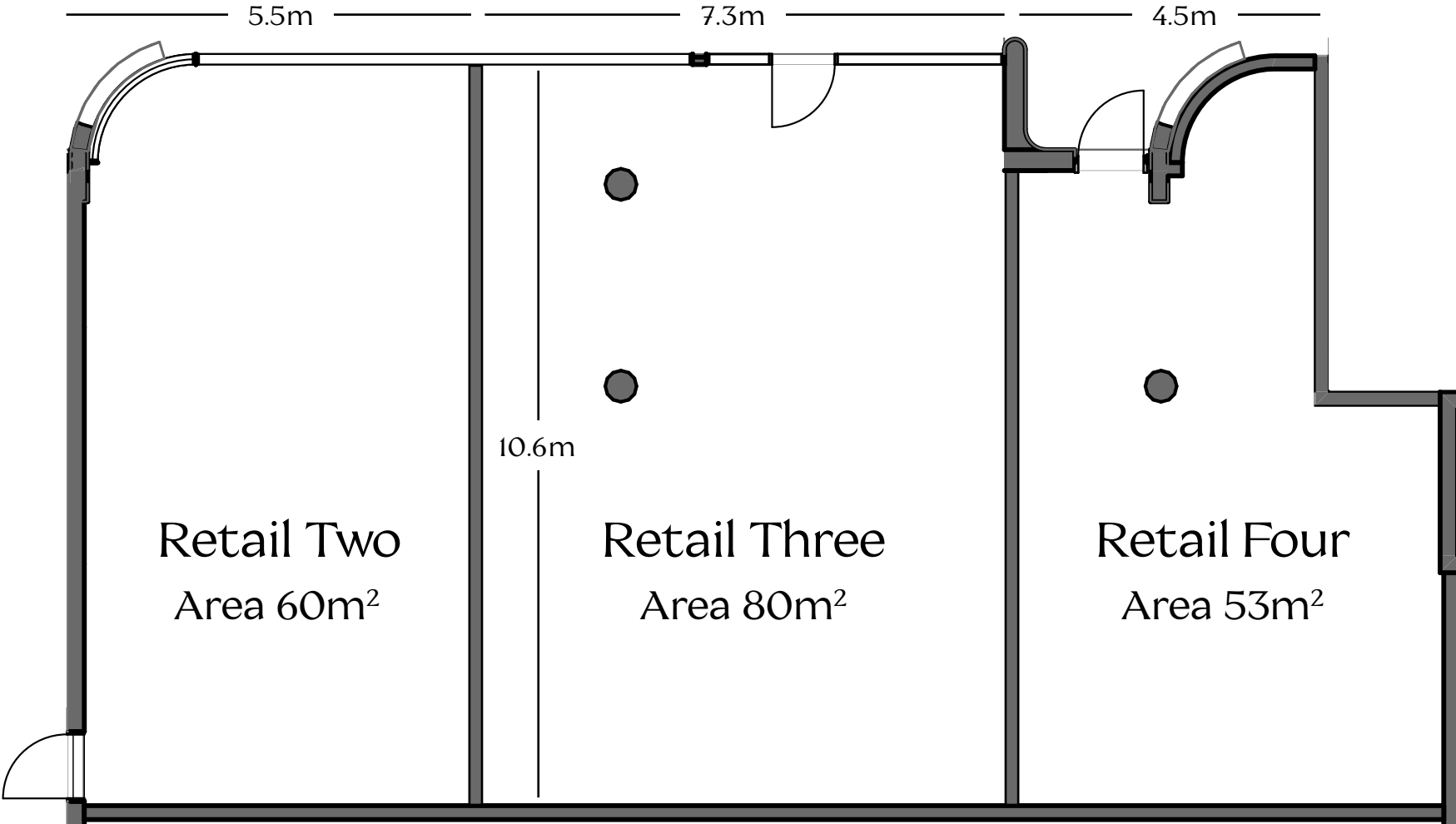
 Retail 3
Floor Plate 80sqm

 Street Frontage 7.3m

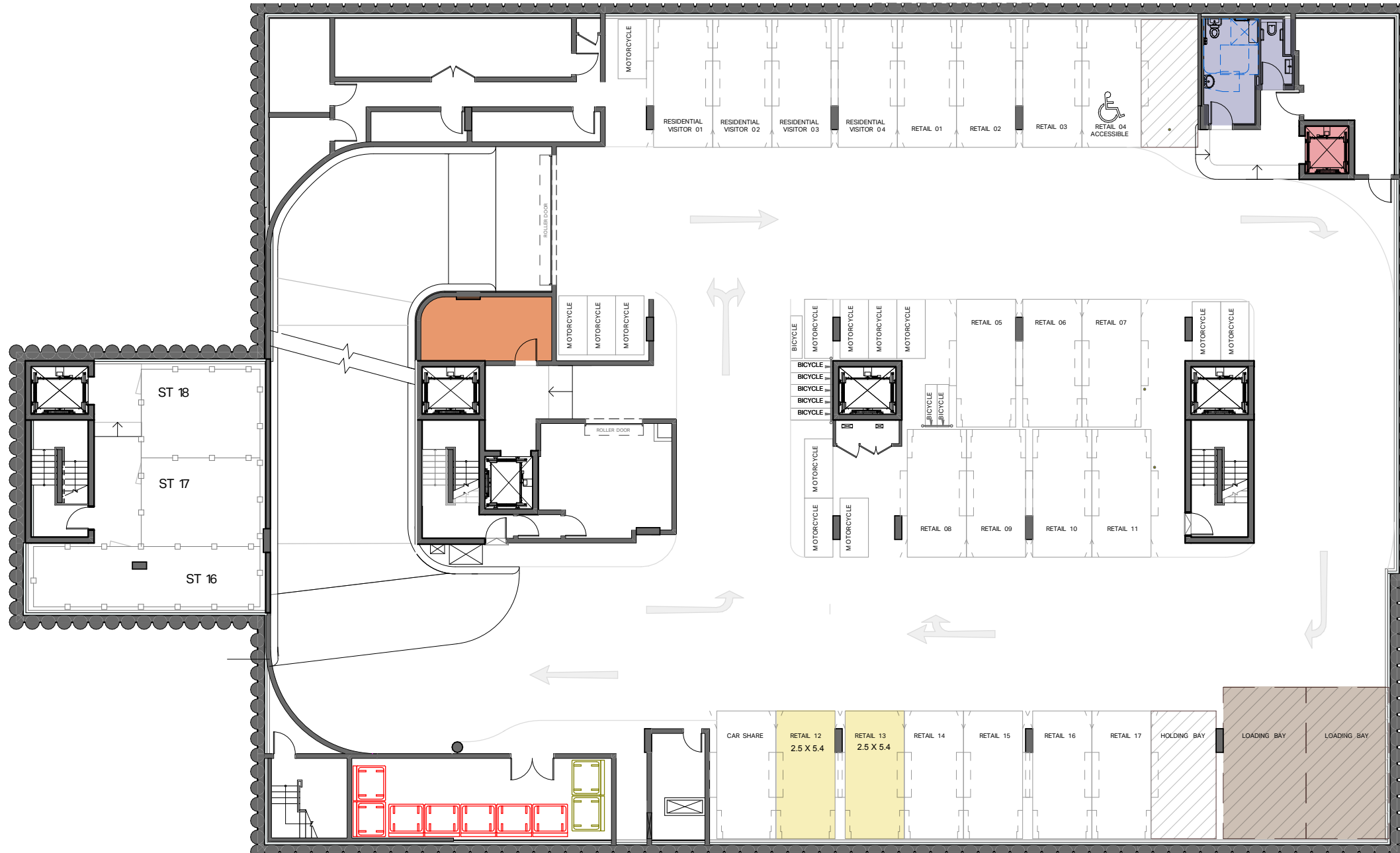
 Retail 4
Floor Plate 53sqm

 Street Frontage 4.5m

 Endless Potential



* All areas are approximate



Key

- 1 Unisex Accessible WC
- 1 Unisex Ambulant WC
- Retail Lift
- Storage Room (14.4m²*)
- 2 Retail Tenancy Car Spaces (27m²*)
- 2 SRV Loading Bays

Situated for success

From cool coffee bars to high-end dining, bondi beach's culinary scene captivates. Home to many of sydney's most celebrated chefs, the neighbourhood offers a dynamic mix of casual and fine dining, all inspired by seasonal produce and ocean fare.

Fresh seafood, sunlit brunches, and sunset cocktails define the experience, where every meal is infused with the energy and beauty of bondi.

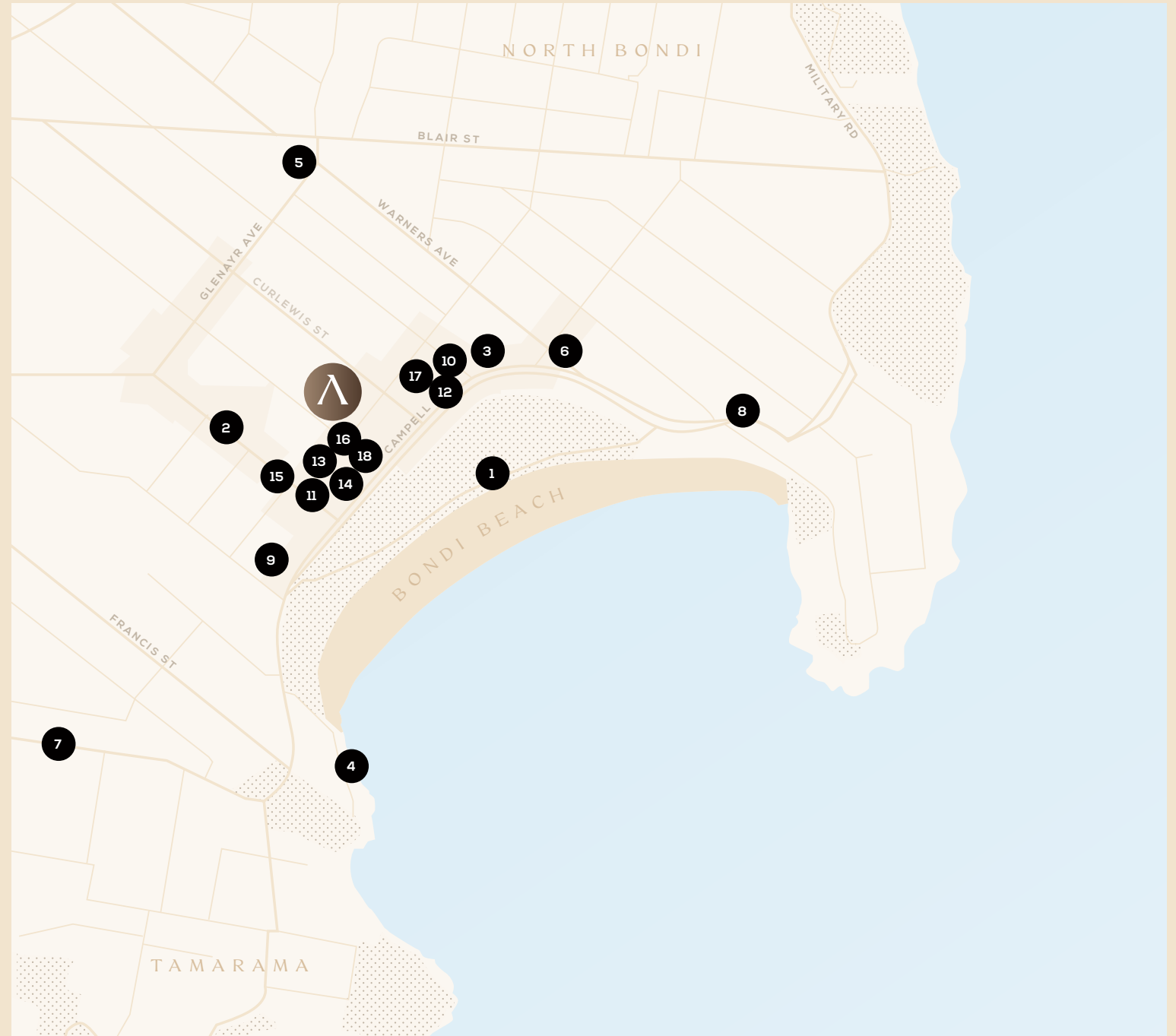
Now, the AVRA precinct presents an unparalleled opportunity to be part of this iconic destination—a precinct where premium hospitality, luxury retail, and wellness converge to create something truly extraordinary.



The heart of Bondi Beach's exceptional food scene.

Position yourself among culinary innovators, just a short walk from the iconic Bondi Beach. Benefit from unmatched visibility and foot traffic, attracting locals, tourists, and food enthusiasts alike.

- | | |
|--------------------------|--------------------|
| 1 Promenade & Glory Days | 10 Saturdays |
| 2 Bills | 11 Lucy Folk Playa |
| 3 Bondi Markets | 12 Slowhouse |
| 4 Bondi Icebergs | 13 SIR. the Label |
| 5 Blackwood Bondi | 14 Jac + Jack |
| 6 Raw Bar | 15 Style Runner |
| 7 Totti's Bondi | 16 Oroton |
| 8 Sean's Panaroma | 17 Le Labo |
| 9 The Well | 18 Orlebar Brown |



Planning

Under the approved development consent (DA-472/2022) specific development applications are to be lodged for the approval of Council in connection with the initial usage and fit-out of the retail tenancies.



A	V	R	A	A	V	R	A	A	V	R	A	A	V	R	A
P	R	E	C	I	N	C	T	P	R	E	C	I	N	C	T
A	V	R	A	A	V	R	A	A	V	R	A	A	V	R	A
P	R	E	C	I	N	C	T	P	R	E	C	I	N	C	T
A	V	R	A	A	V	R	A	A	V	R	A	A	V	R	A
P	R	E	C	I	N	C	T	P	R	E	C	I	N	C	T
A	V	R	A	A	V	R	A	A	V	R	A	A	V	R	A
P	R	E	C	I	N	C	T	P	R	E	C	I	N	C	T
A	V	R	A	A	V	R	A	A	V	R	A	A	V	R	A
P	R	E	C	I	N	C	T	P	R	E	C	I	N	C	T

PRECINCT
RETAIL

Matthew Yovich
+61 401 718 152
matt@precinctretail.com.au

Nasta Parodi
+61 452 567 610
nastassia@precinctretail.com.au

RADIUS
PROPERTY

Taylor Gray
+61 439 966 743
taylor@radiusproperty.com.au

Lucien Kronenberg
+61 404 695 676
lucien@radiusproperty.com.au

Disclaimer: Although every care has been taken in preparing this document, Precinct Retail and Radius Property or the vendor do not verify its accuracy. Information, opinions and forecasts depend on the accuracy of any information and assumption on which they are based, and on prevailing market conditions, for which Precinct Retail and Radius and the vendor do not accept responsibility. No representations or warranties of any nature whatsoever are given, intended or implied about this report, any information, opinions and forecasts contained within this report or the accuracy or enforceability of any documents referred to in this report. Precinct Retail and Radius and the vendor will not be liable for any omissions or errors. Precinct Retail and Radius and the vendor will not be liable, including any negligence, for any direct, indirect, special, incidental or consequential losses or damages arising out of or in any way connected with use of or reliance on anything in this report. This report does not form part of or constitute an offer or contract. Recipients of this report should rely on their own enquiries about its accuracy. All images are only for illustrative purposes.

Λ V R Λ

P R E C I N C T

135-155 CURLEWIS STREET,
BONDI BEACH

Created By Clutch.