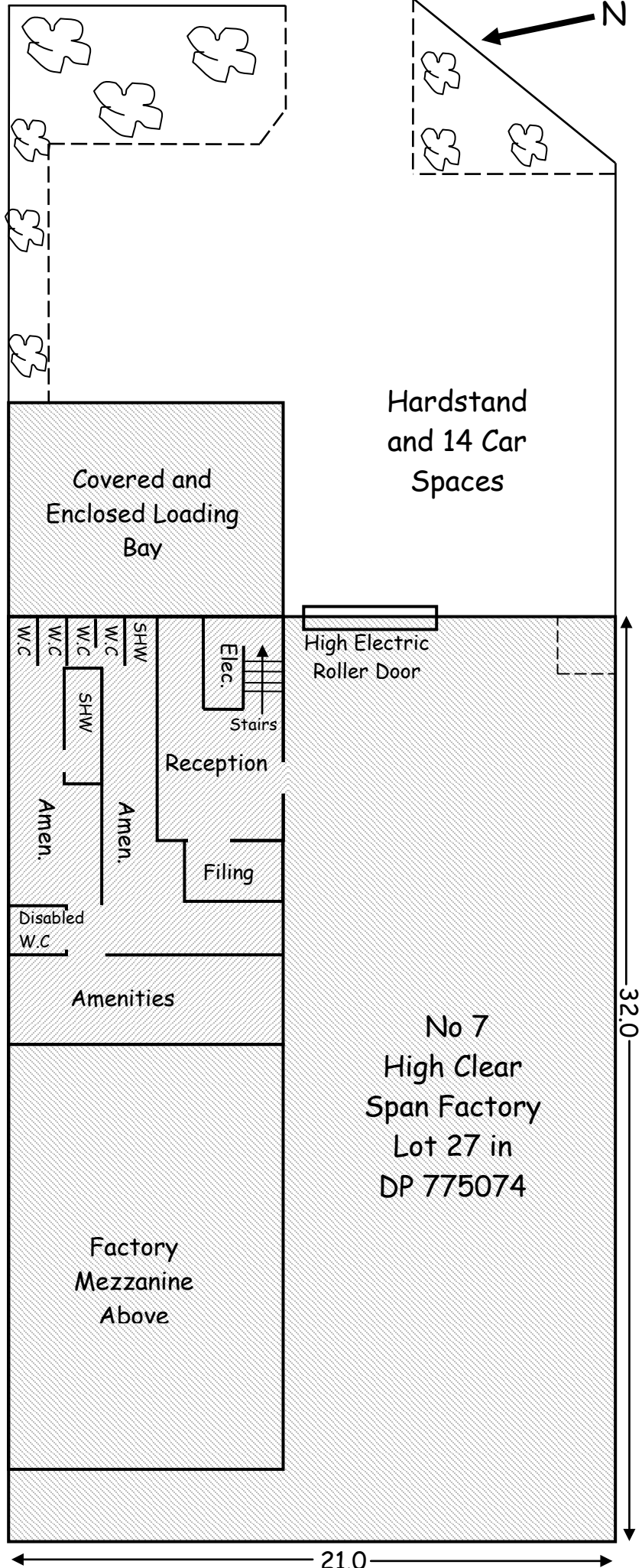
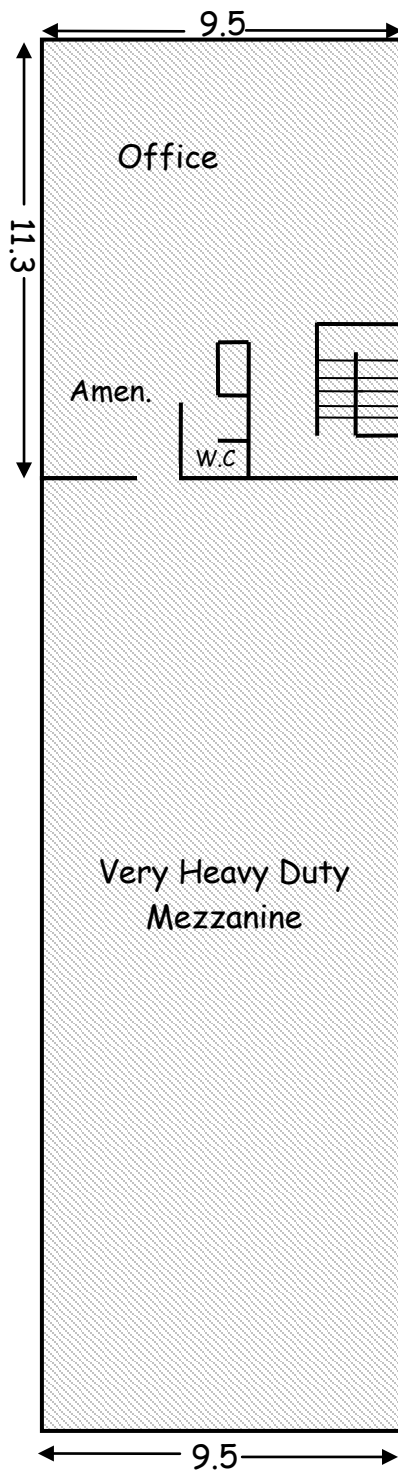


# 7 Marigold Place, Revesby NSW, 2212 - Lot 27 in DP 775074

Ground Floor Factory Recept. & Amen.	672m <sup>2</sup>
Ground floor Enclosed & Covered Loading Bay	67m <sup>2</sup>
Mezzanine Office & Amen.	101m <sup>2</sup>
Heavy Duty Mezzanine Factory	240m <sup>2</sup>
<b>Total</b>	<b>1,080m<sup>2</sup></b>



Disclaimer: This floorplan has been provided as a guide only and is not drawn to scale. IZRE cannot guarantee its accuracy and all interested parties should rely on their own measurements.