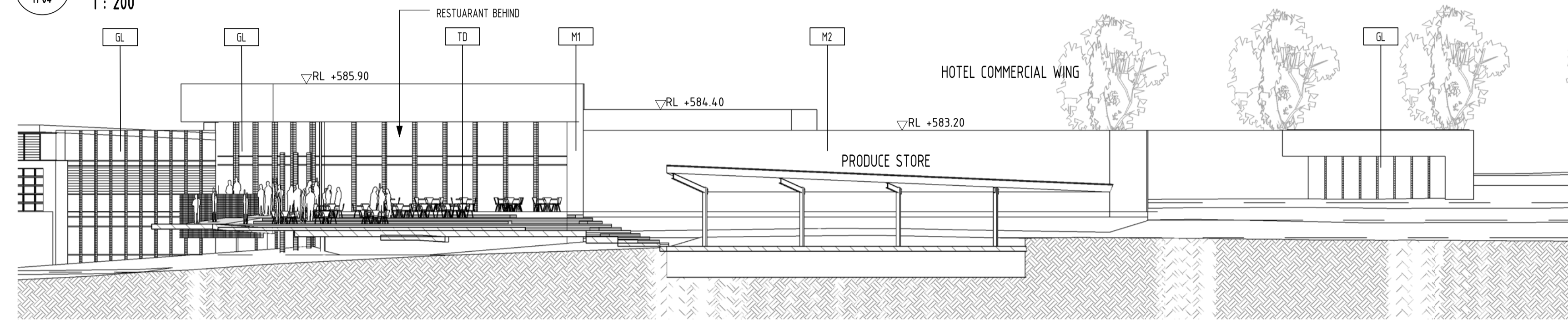


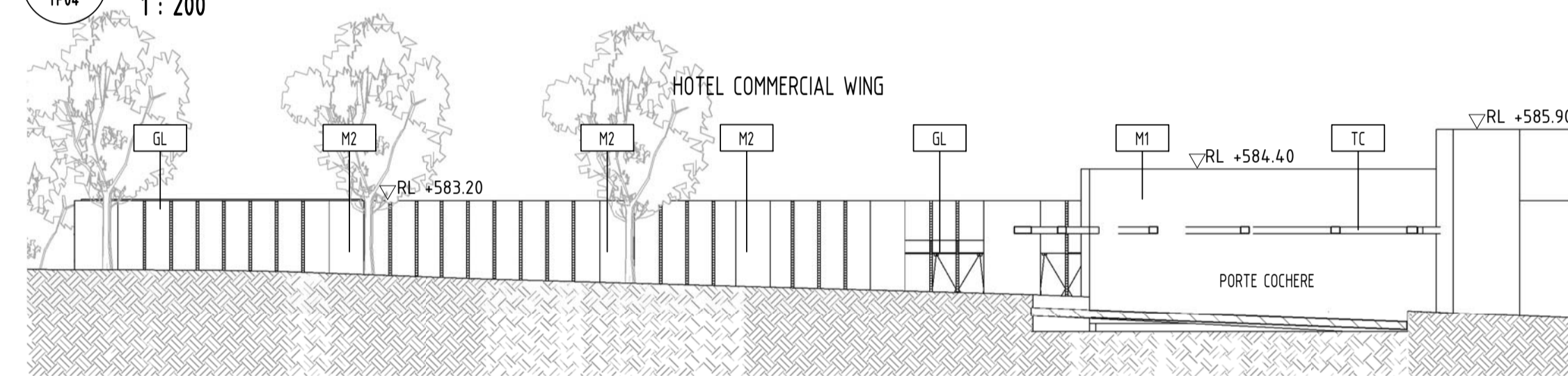
1 HOTEL SOUTH-WEST ELEVATION

TP04 1: 200



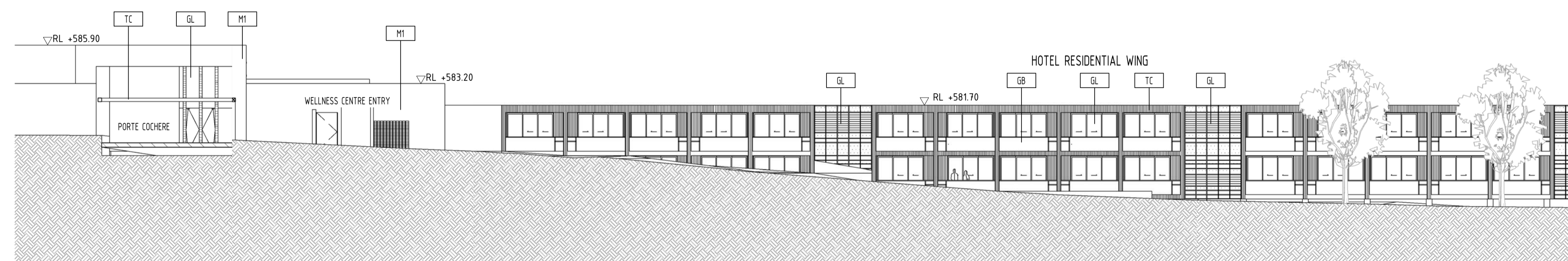
2 HOTEL SOUTH-EAST ELEVATION

TP04 1: 200



4 HOTEL NORTH-WEST ELEVATION

TP04 1: 200 HOTEL COMMERCIAL WING



3 HOTEL NORTH-EAST ELEVATION

TP04 1: 200



5 HOTEL WEST ELEVATION

TP04 1: 200

MATERIALS LEGEND

- TC TIMBER CLADDING NATURAL FINISH
 - TS TIMBER SCREEN NATURAL FINISH
 - GB GLASS BALUSTRADE
 - AL ALUMINIUM POWDERCOATED FINISH
 - GL GLAZING
 - M1 MASONRY WALL TYPE 1
 - M2 MASONRY WALL TYPE 2
 - TD TIMBER DECKING NATURAL FINISH
 - EC ECOPLY WALL CLADDING
 - PB PLASTERBOARD LINING IN SELECT PAINT FINISH
 - MR MIRROR
 - CD SELECT COLORBOND DECK ROOF
 - C SELECT CARPET
 - T SELECT TILES
 - PC POLISHED CONCRETE
 - TF SELECT TIMBER FLOORBOARDS LOW SHEEN FINISH
 - MC MONOLITHIC CONCRETE
 - V SELECT NON-SLIP VINYL
- NOTE: ALL WINDOW FRAMES TO BE ALUMINIUM WITH POWDERCOAT FINISH

REV	DATE	DESCRIPTION	INT.



105 carpenter street brighton victoria 3186 australia
 telephone +613 9592 0466 facsimile +613 9592 4697
 email bgarch@bgarch.com.au www.bgarchitecture.com.au

project
KINGLAKE RESORT

drawing
HOTEL ELEVATIONS

scale **1: 200** date **09/09/08**
 drawn **Author** checked **Checker**
 job number
 dwg number **TP04** issue
 plot date **5/02/2009 5:27:59 PM**

FOR PRICING ONLY

NOT FOR CONSTRUCTION

PRELIMINARY