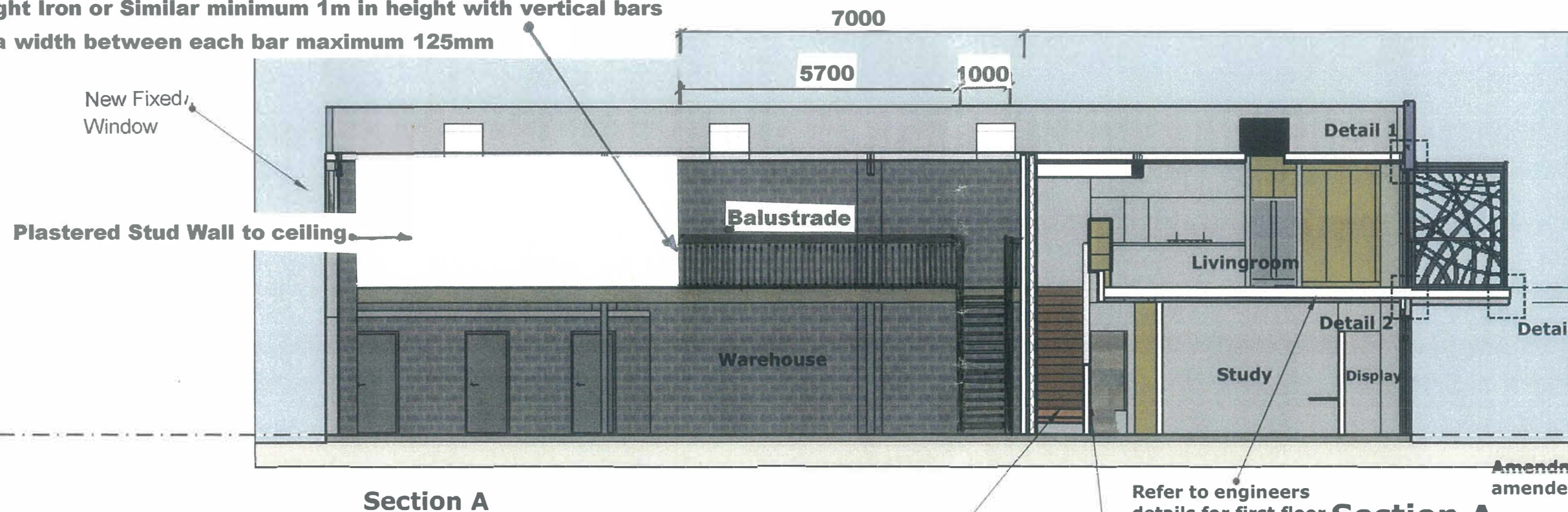


Warehouse Mezzanine to Engineers Specifications
Staircase, Goings 270mm, Riser 190mm, Hand Rail on each side
50mm minimum and 900mm above stair treads. Balustrade to be
Wrought Iron or Similar minimum 1m in height with vertical bars
with a width between each bar maximum 125mm



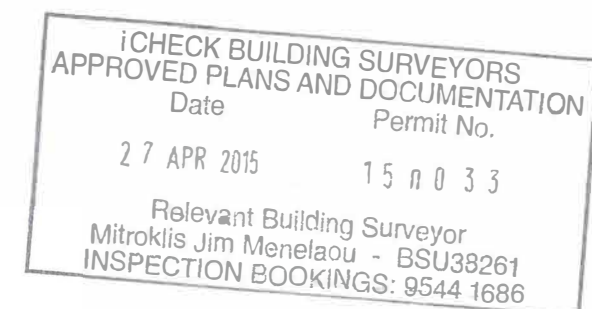
Selected timber stair with 240 x 45 KDHW stringers and ex 290 x 30 treads (270 goings with 20 nosing overhangs). Fix 50 diam. KDHW handrails with stainless steel brackets 900 above stair.

Solid plasterboard balustrade to stair min 900 above nosings.

Refer to engineers details for first floor stucture.

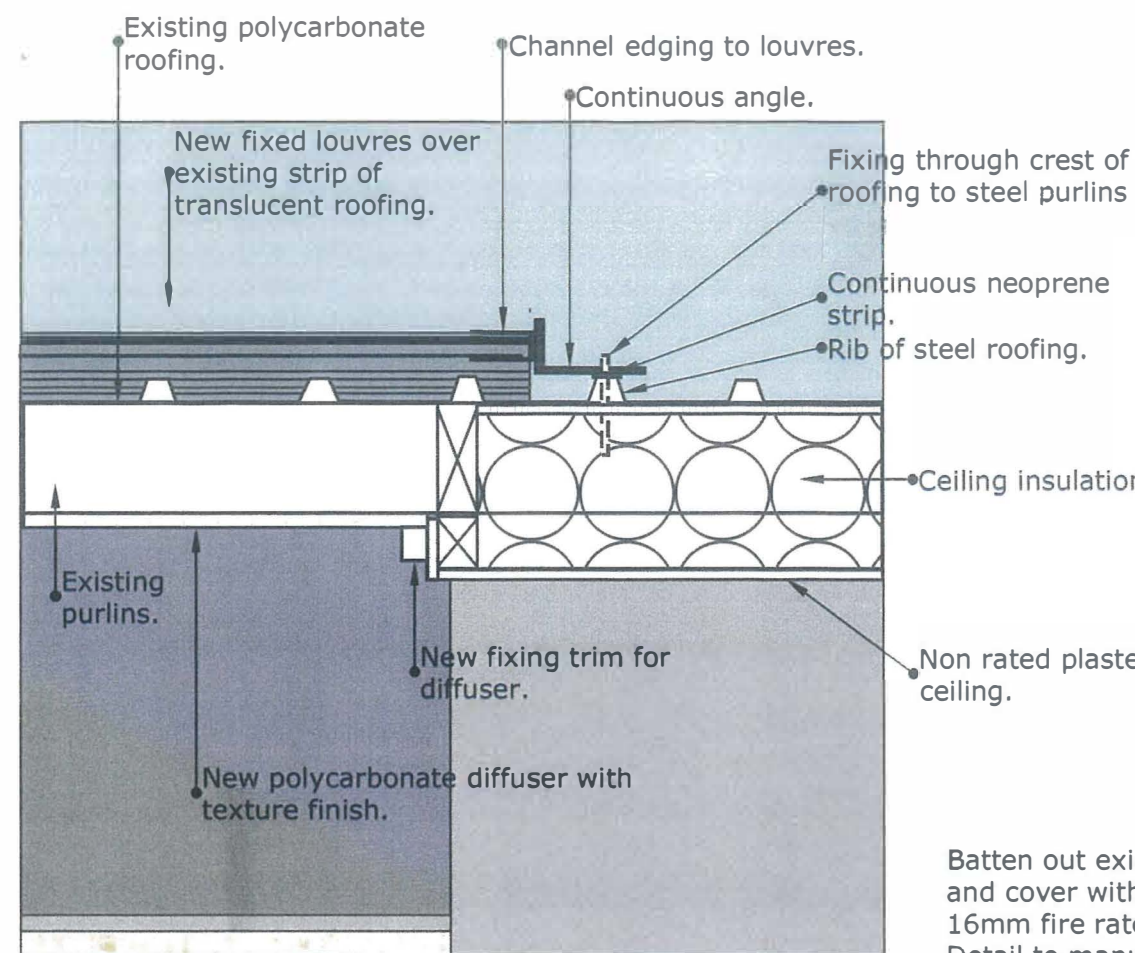
Section A.

Amendment A 6.2.15 Stair and balustrade notes amended. Balcony framing and level changed.

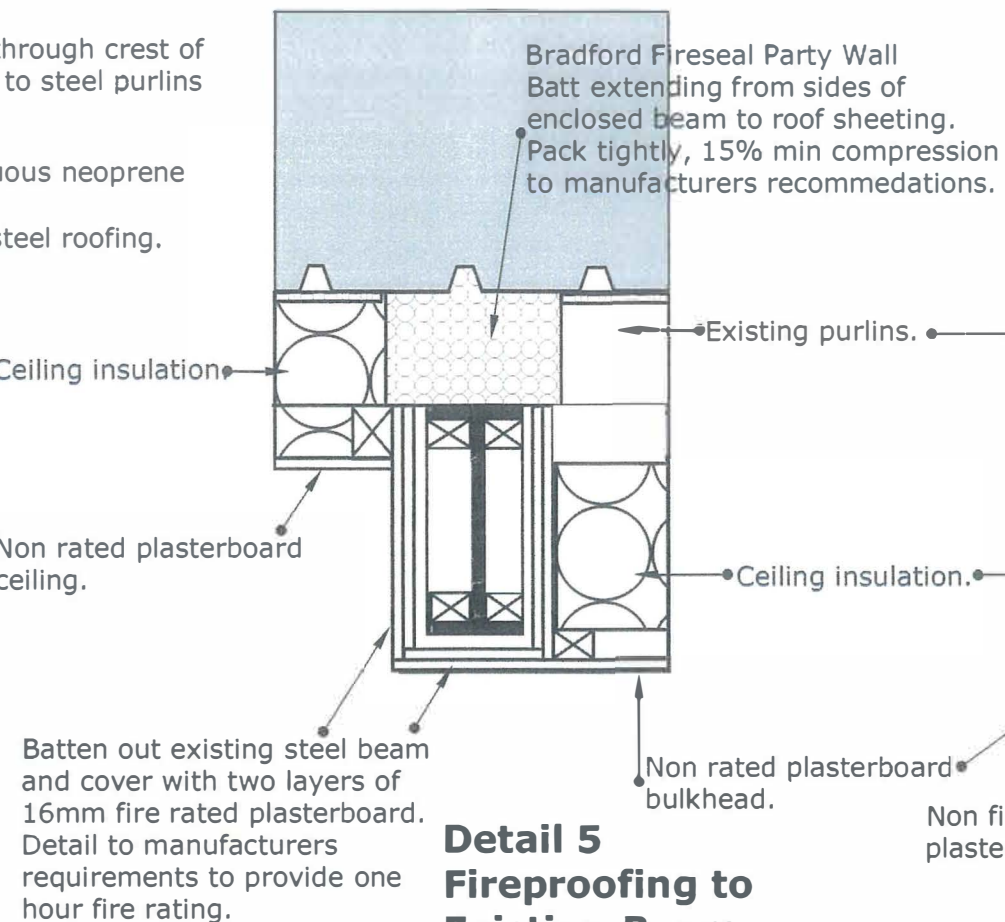


Scale 1:100 11.6.2014
 Rodger Smith Architect

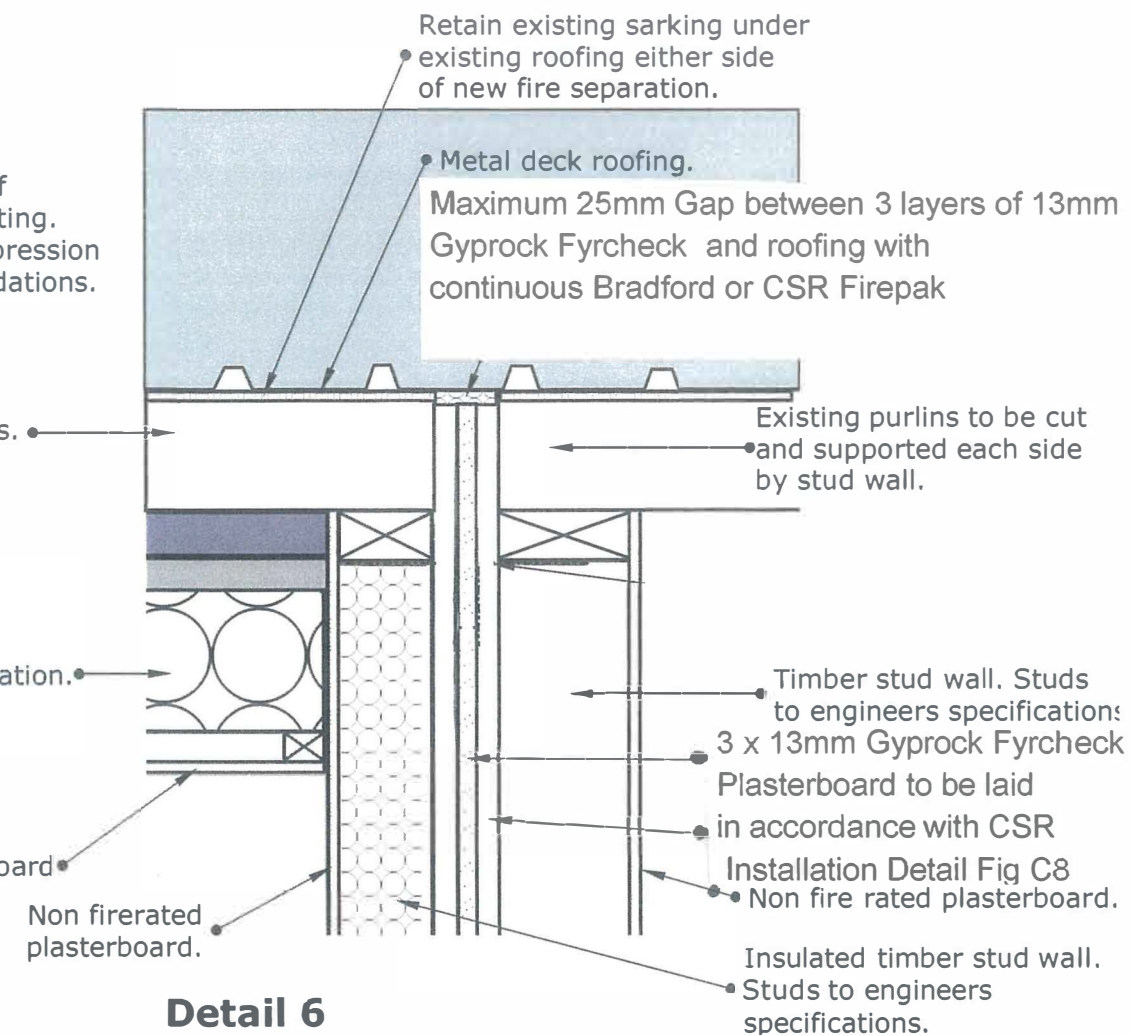
ph.9397 6222 rs@rodgersmitharchitect.com.au **WD 13.11.5A**



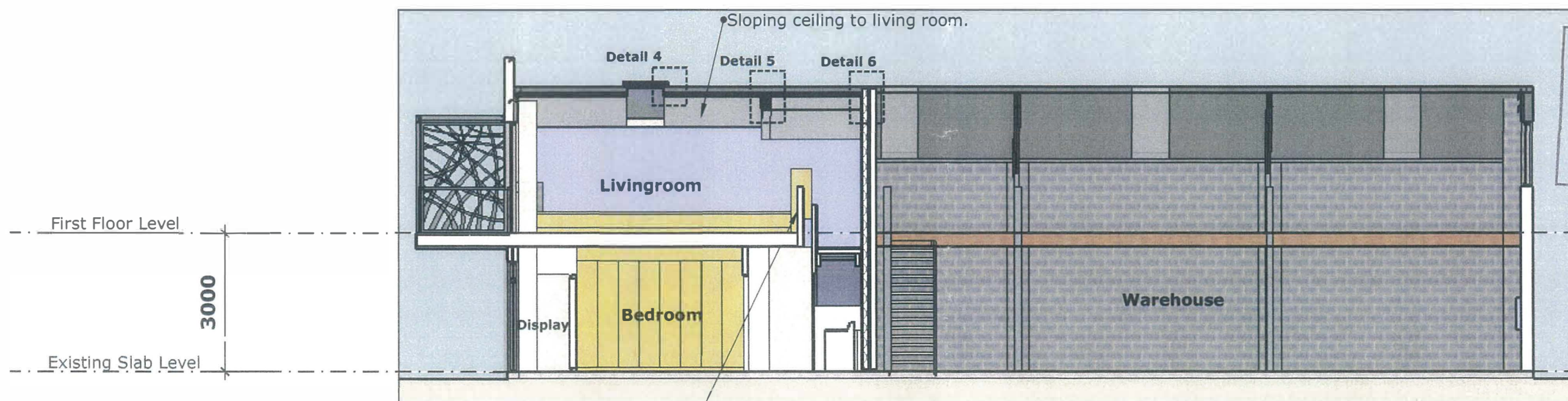
Detail 4
Skylight/ceiling detail.



Detail 5
Fireproofing to Existing Beam

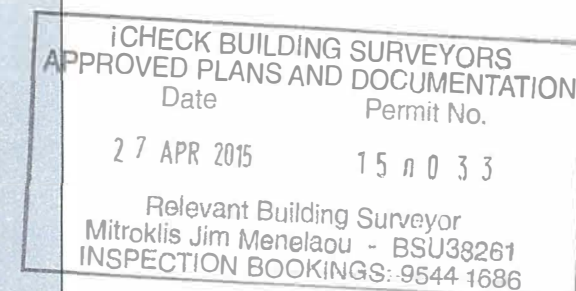


Detail 6
Fire rated wall to roof detail, perpendicular to purlins.



Section B

1000 high stud balustrade with plasterboard lining. Fix to floor joists



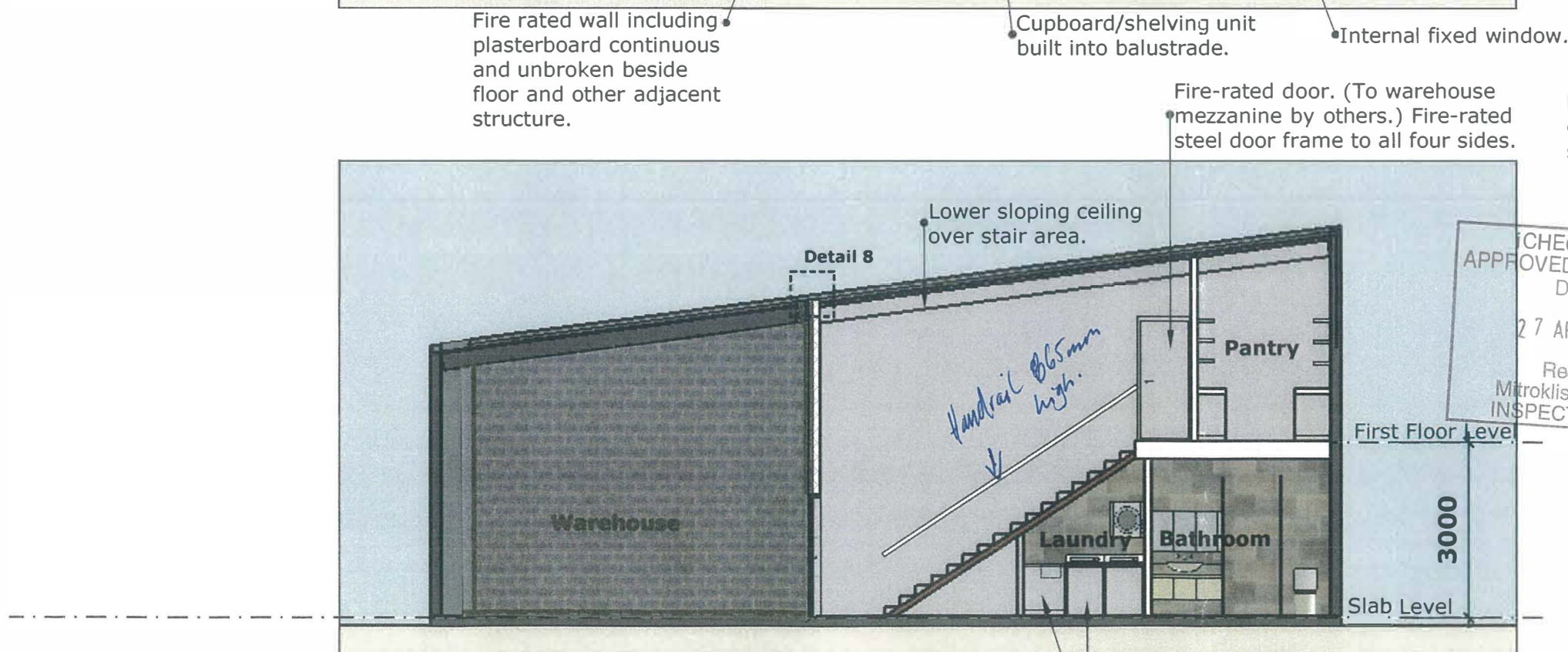
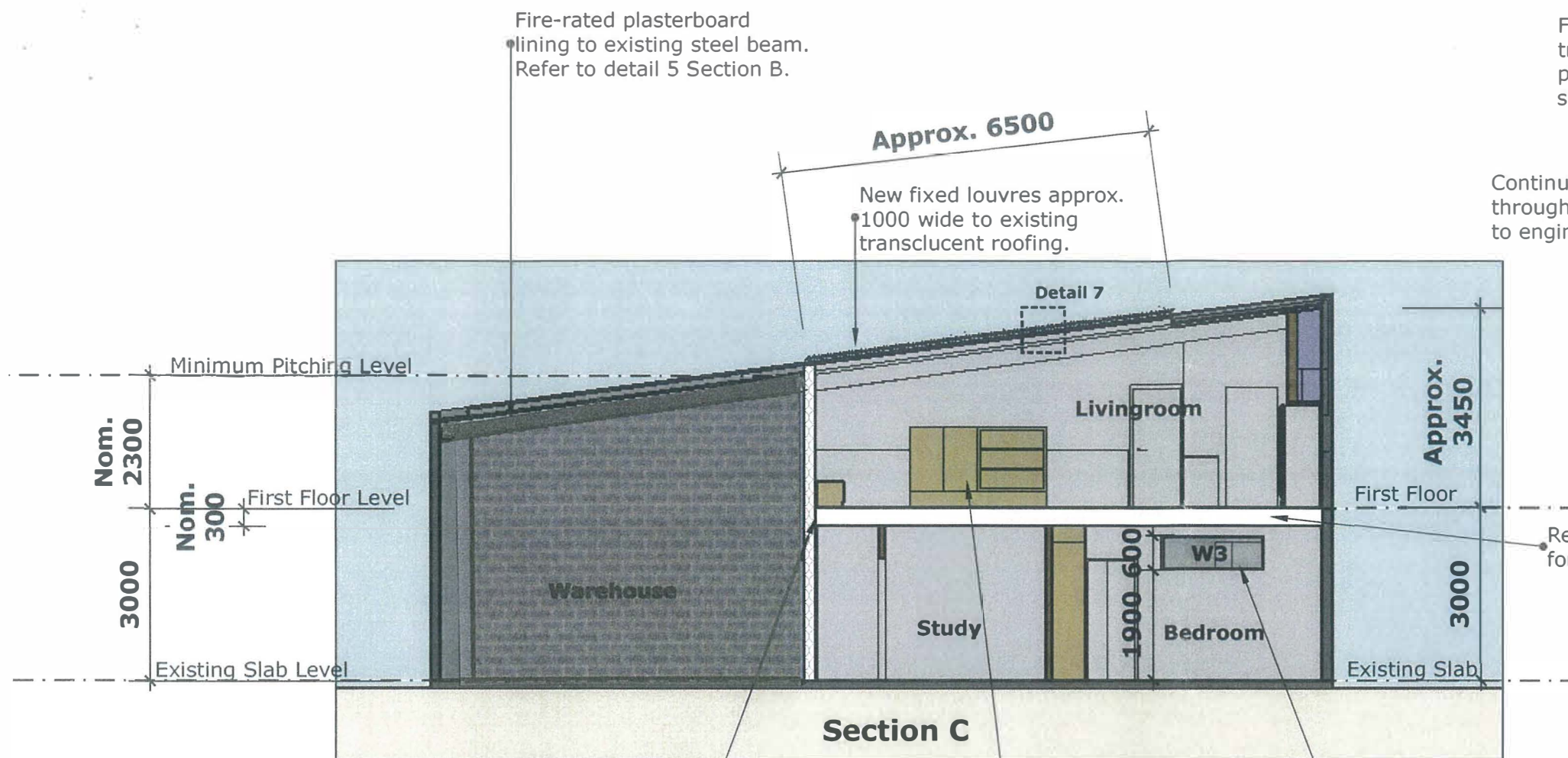
Section B.

Amendment A 6.2.15 Fire rated wall type amended. Detail 6.

Scale 1:100, 1:10. 11.6.2014
Rodger Smith Architect

ph.9397 6222 rs@rodgersmitharchitect.com.au

WD 13.11.6A



Fixed aluminium louvres spanning translucent roofing. Top face to have powdercoat finish, mist green or similar. Raw metal underside.

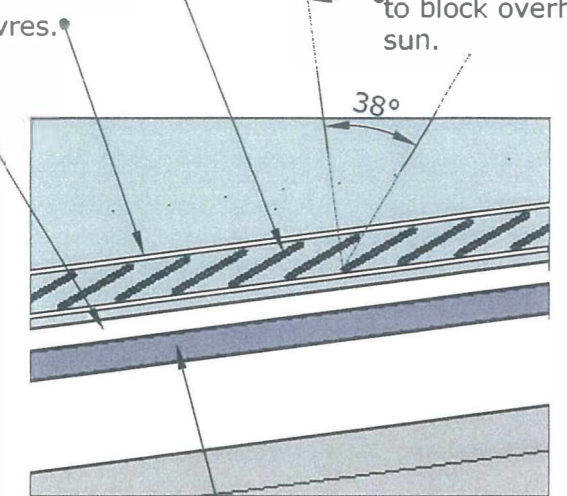
Channel sides to louvres.

Continuous angle for fixing through ridges of metal roofing to engineers requirements.

Perpendicular to roof.

Louvres to overlap to block overhead sun.

38°

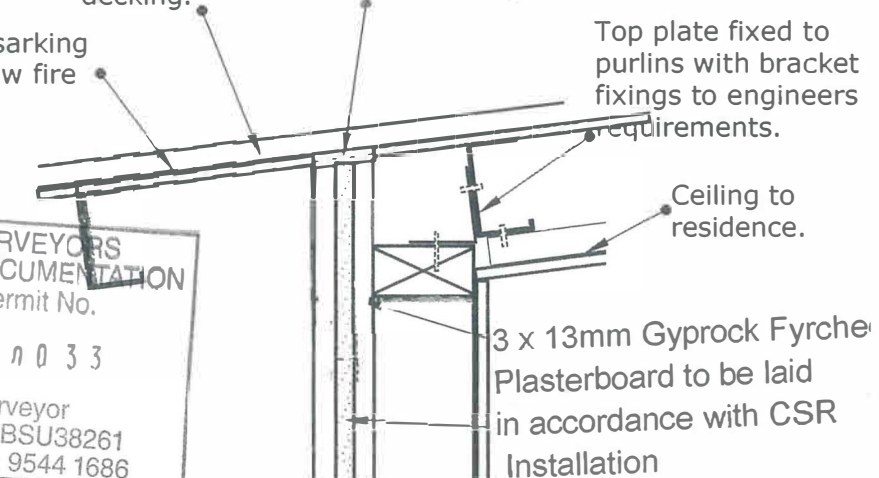


Detail 7 Roofing approx. 7 degree fall.
Louvres to translucent roofing.
Refer also to Detail 4 Section B.

Maximum 25mm Gap between 3 layers of 13mm Gyprock Fyrcheck and roofing with continuous Bradford or CSR Firepal

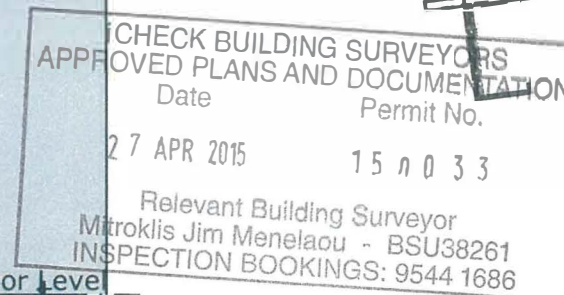
Retain existing sarking either side of new fire separation.

Existing roof decking.



Detail 8 Fire rated wall to roof detail, parallel to purlins.

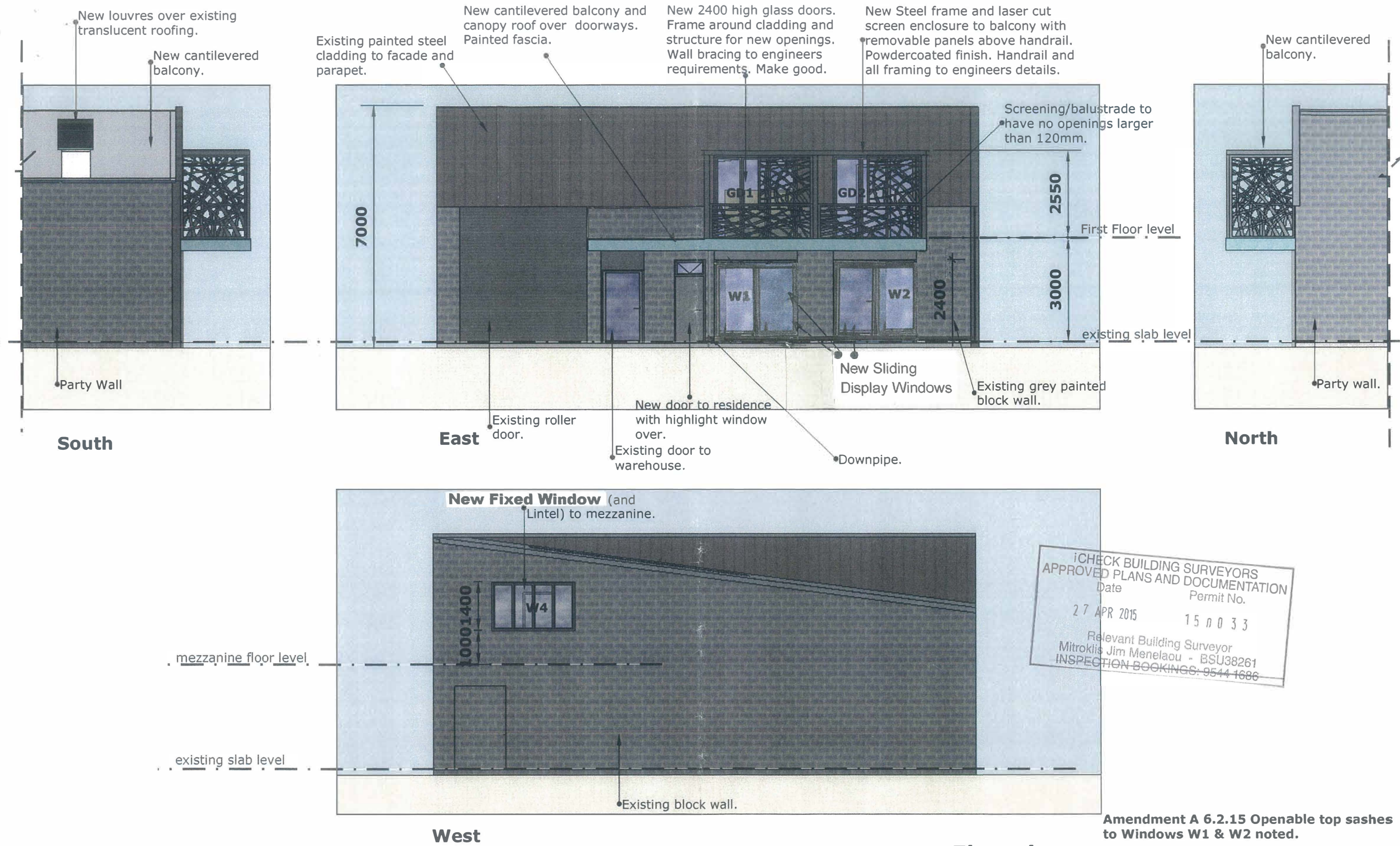
Amendment A 6.2.15 Stair and balustrade note removed. Wall details Detail 8.



Sections C & D.

Scale 1:100 11.6.2014
Rodger Smith Architect

ph.9397 6222 rs@rodgersmitharchitect.com.au **WD 13.11.7A**



iCHECK BUILDING SURVEYORS
 APPROVED PLANS AND DOCUMENTATION
 Date 27 APR 2015
 Permit No. 15 00 33
 Relevant Building Surveyor
 Mitrokiis Jim Menelaou - BSU38261
 INSPECTION BOOKINGS: 9544 1686

Amendment A 6.2.15 Openable top sashes to Windows W1 & W2 noted.

Elevations