

**RECEIVED**  
**ISIS**  
 26/11/08

Title Block  
 Drawing No: SY1-416  
 Drawing No: IA-507  
 Date: 11/02/07  
 Scale: 1:100  
 Project: H

**FURNITURE PLAN**  
**LEVEL 7**

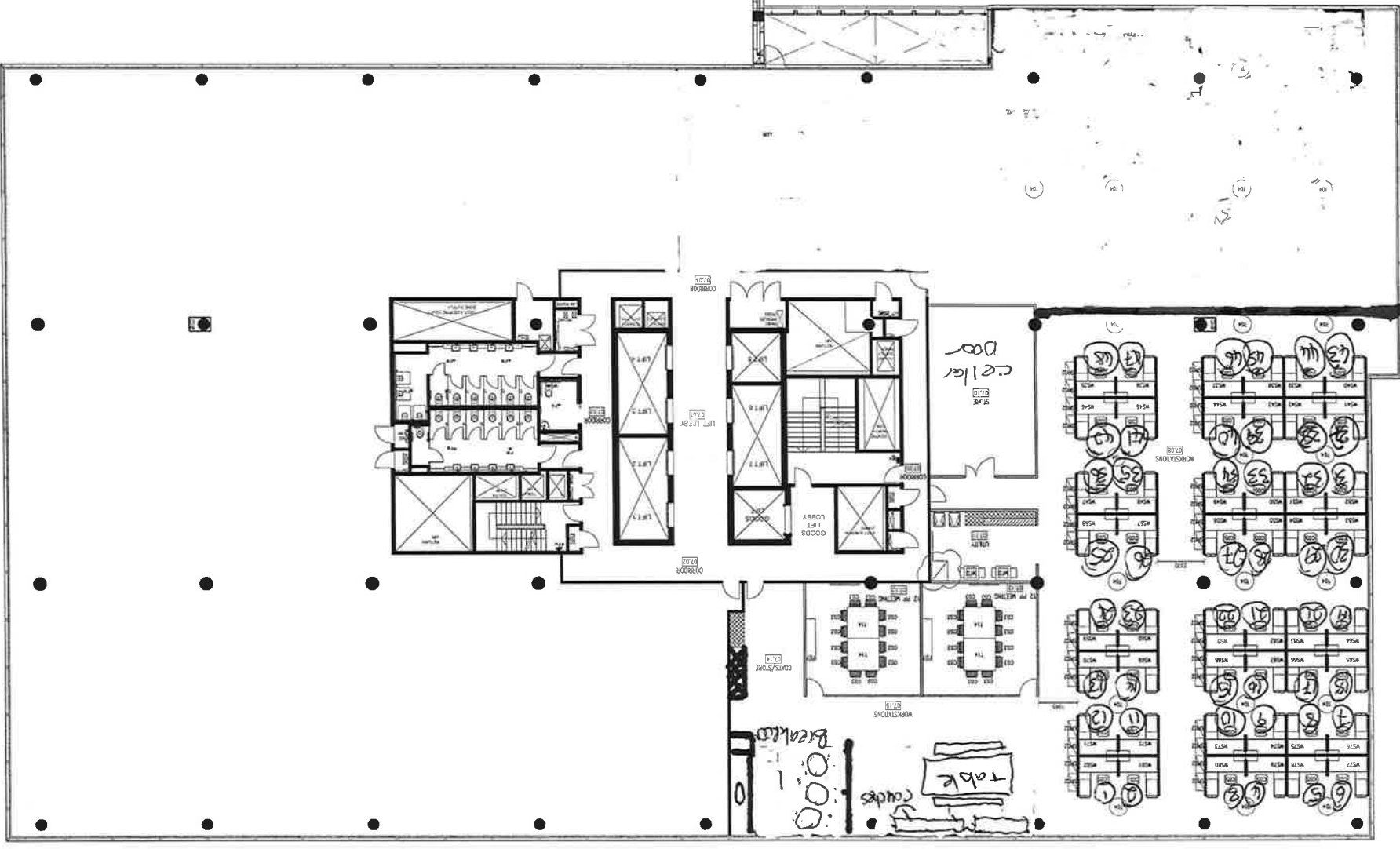
**LEVEL 7 AND 8**  
**5 RIDER BOULEVARD**

**FOSTERS AUSTRALIA**

**HBO + EMTB**  
 Project Management  
 15 Creek Road  
 Sydney NSW 2000  
 Phone: (02) 9228 2000  
 Fax: (02) 9228 2001  
 Email: hbo@hbo.com.au  
 Website: www.hbo.com.au  
 Project Design  
 15 Creek Road  
 Sydney NSW 2000  
 Phone: (02) 9228 2000  
 Fax: (02) 9228 2001  
 Email: emtb@emtb.com.au  
 Website: www.emtb.com.au

**GENERAL NOTES:**

- FURNITURE PLANS SHOULD BE IN CONFORMANCE WITH THE CODES AND STANDARDS LISTED IN THE GENERAL NOTES.
- FURNITURE PLANS SHOULD BE IN CONFORMANCE WITH THE CODES AND STANDARDS LISTED IN THE GENERAL NOTES.
- FURNITURE PLANS SHOULD BE IN CONFORMANCE WITH THE CODES AND STANDARDS LISTED IN THE GENERAL NOTES.
- FURNITURE PLANS SHOULD BE IN CONFORMANCE WITH THE CODES AND STANDARDS LISTED IN THE GENERAL NOTES.
- FURNITURE PLANS SHOULD BE IN CONFORMANCE WITH THE CODES AND STANDARDS LISTED IN THE GENERAL NOTES.
- FURNITURE PLANS SHOULD BE IN CONFORMANCE WITH THE CODES AND STANDARDS LISTED IN THE GENERAL NOTES.
- FURNITURE PLANS SHOULD BE IN CONFORMANCE WITH THE CODES AND STANDARDS LISTED IN THE GENERAL NOTES.
- FURNITURE PLANS SHOULD BE IN CONFORMANCE WITH THE CODES AND STANDARDS LISTED IN THE GENERAL NOTES.
- FURNITURE PLANS SHOULD BE IN CONFORMANCE WITH THE CODES AND STANDARDS LISTED IN THE GENERAL NOTES.
- FURNITURE PLANS SHOULD BE IN CONFORMANCE WITH THE CODES AND STANDARDS LISTED IN THE GENERAL NOTES.



**FOR CONSTRUCTION**

NO.	DESCRIPTION	DATE
1	ISSUE FOR CONSTRUCTION	11/02/07
2	ISSUE FOR CONSTRUCTION	11/02/07
3	ISSUE FOR CONSTRUCTION	11/02/07
4	ISSUE FOR CONSTRUCTION	11/02/07
5	ISSUE FOR CONSTRUCTION	11/02/07
6	ISSUE FOR CONSTRUCTION	11/02/07
7	ISSUE FOR CONSTRUCTION	11/02/07
8	ISSUE FOR CONSTRUCTION	11/02/07
9	ISSUE FOR CONSTRUCTION	11/02/07
10	ISSUE FOR CONSTRUCTION	11/02/07
11	ISSUE FOR CONSTRUCTION	11/02/07
12	ISSUE FOR CONSTRUCTION	11/02/07
13	ISSUE FOR CONSTRUCTION	11/02/07
14	ISSUE FOR CONSTRUCTION	11/02/07
15	ISSUE FOR CONSTRUCTION	11/02/07
16	ISSUE FOR CONSTRUCTION	11/02/07
17	ISSUE FOR CONSTRUCTION	11/02/07
18	ISSUE FOR CONSTRUCTION	11/02/07
19	ISSUE FOR CONSTRUCTION	11/02/07
20	ISSUE FOR CONSTRUCTION	11/02/07

