

# Leased Investment

9-11 Playford Crescent, Salisbury North

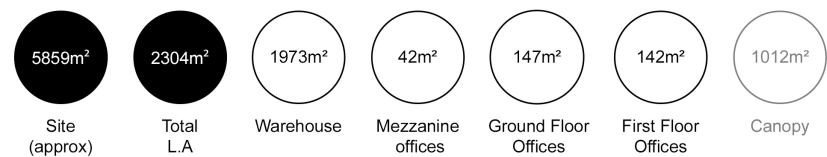
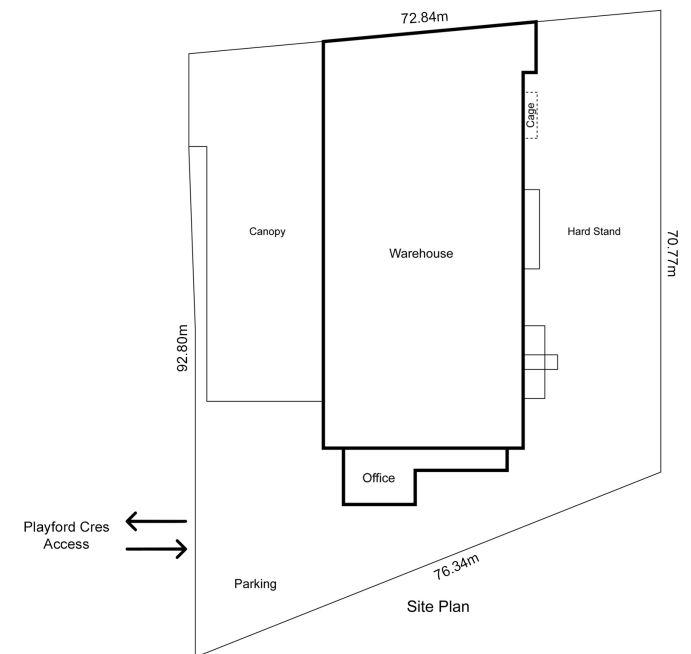
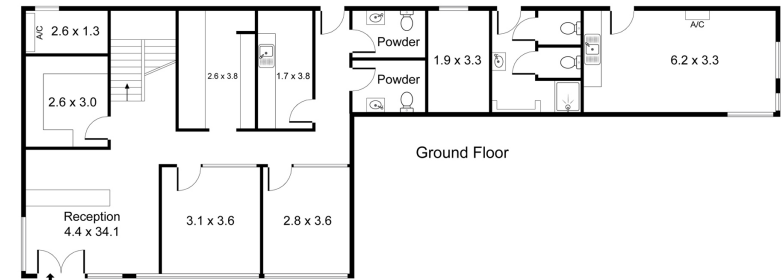
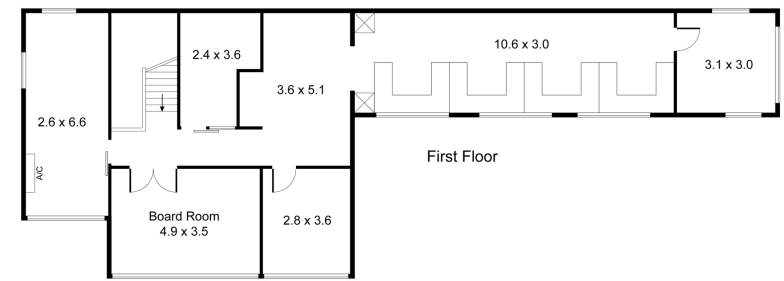
Sale by Expressions Of Interest

For sale



savills





Scale in metres. This drawing is for illustration purposes only. All measurements are approximate and details intended to be relied upon should be independently verified.





## Leased Investment

9-11 Playford Crescent, Salisbury North SA

- High clearance clear span industrial facility
- Ground and first floor offices of 289sq m\*
- Total building area of 2,304sq m\*
- Site area of 5,859sq m\*
- Leased to March 2023 with further with 2 + 2 + 2 rights of renewal
- Annual income \$124,516.02\* plus GST and outgoings
- Zoned Strategic Employment

\* Approx

For sale by Expressions of Interest closing Thursday 15 April 2021 at 4pm (ACDT) at the offices of Savills (SA) Pty Ltd

### Exclusive Selling Agents



Chet AI  
0413 104 002  
chal@savills.com.au



Steve Bobridge  
0418 835 525  
sbobridge@savills.com.au

RLA1786

Level 2, 50 Hindmarsh Square, Adelaide SA 5000



08 8237 5000  
savills.com.au







**DISCLAIMER** The information in this brochure is for marketing purposes only. It has, except as otherwise indicated, been supplied to us by or on behalf of the vendor. We have not verified the information nor have we sought to have the information independently verified thus have no opinion as to its truth or falsity. Savills will not be liable for any loss (in tort, contract or otherwise) suffered as a result of relying on the information contained herein. The information in this brochure does not form part of any offer or contract. All images are for illustrative purposes only. This brochure shall not be copied, reproduced or distributed by any other person or corporation at any time without the prior consent of Savills. RLA1786

