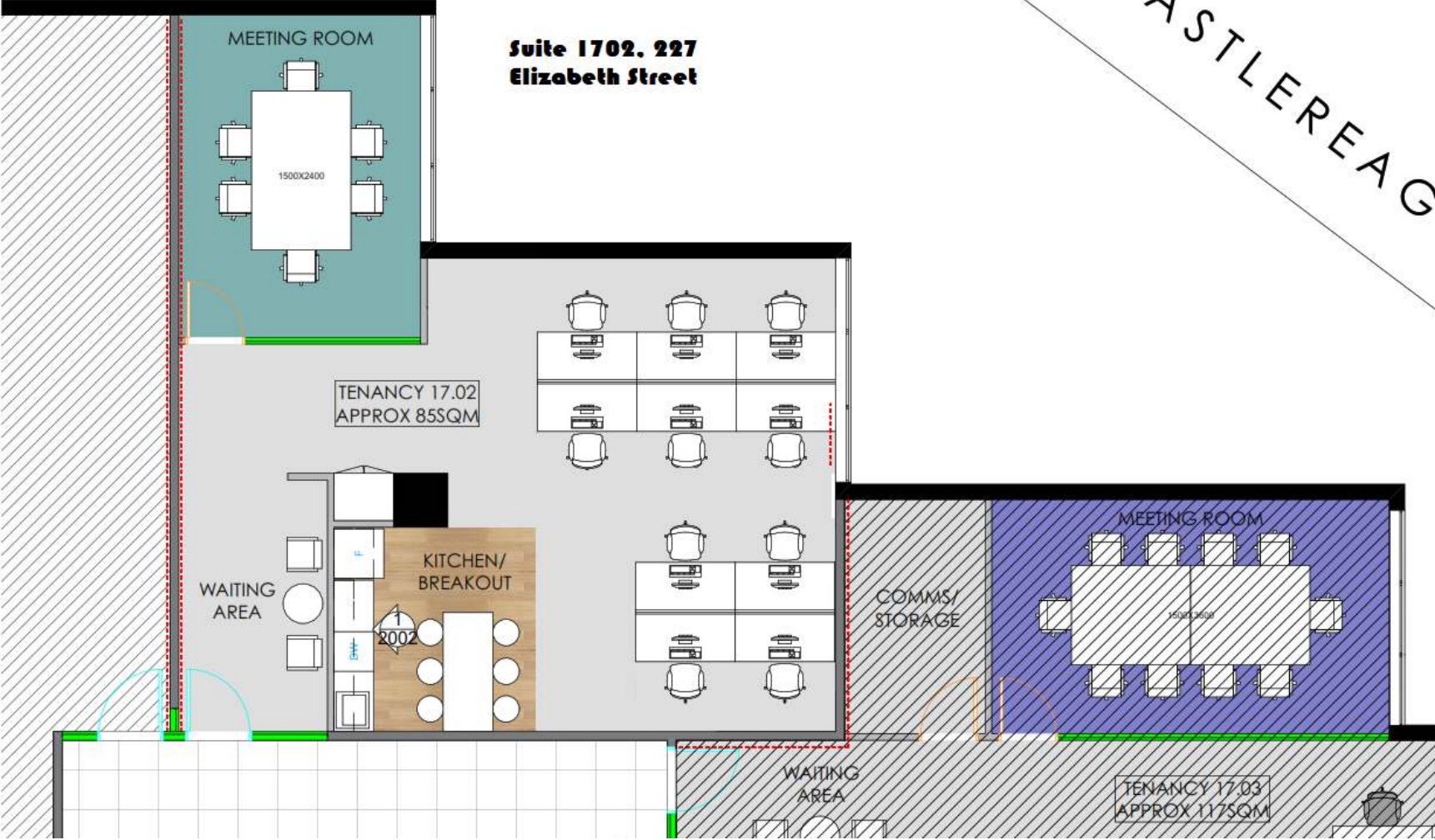


CASTLEREAG

**Suite 1702. 227**  
**Elizabeth Street**



# FLOORPLAN

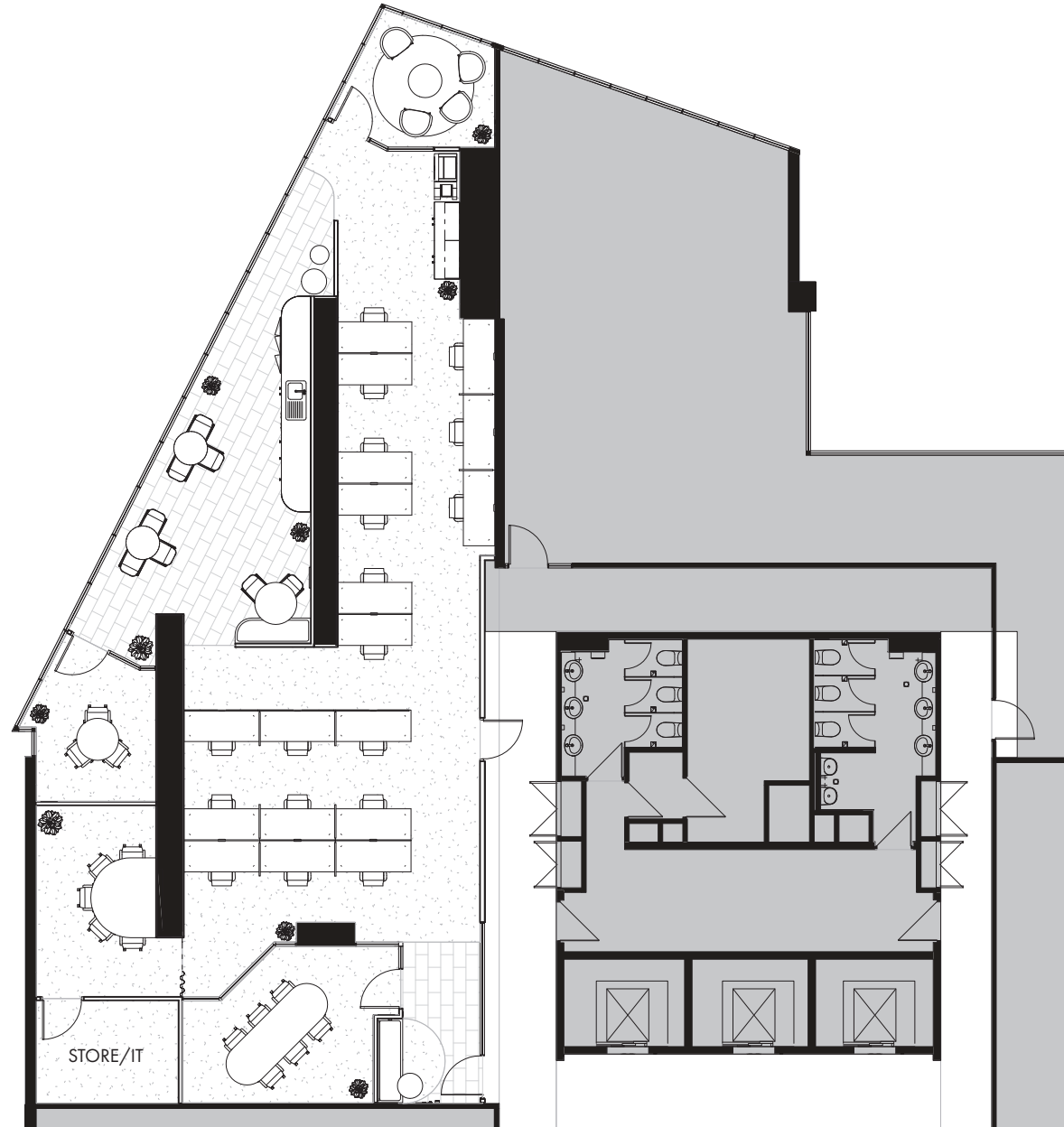
## LEGEND: SUITE 6.03

215m<sup>2</sup> TOTAL AREA (APPROX. NLA)

18 TOTAL STAFF

11.9m<sup>2</sup> DENSITY (PER PERSON)

- 1x WAITING AREA
- 1x BOARDROOM
- 2x MEETING ROOMS
- 1x OPEN PLAN AREA (18 PAX)  
- 1800mm WORKSTATIONS
- 1x CASUAL MEETING ROOM
- 1x KITCHEN & BREAKOUT AREA
- 1x UTILITIES & PRINT AREA
- 1x STORE/IT ROOM



DRAWING NOT TO SCALE

**STRUTT**

CLIENT  
FAR EAST ORGANIZATION

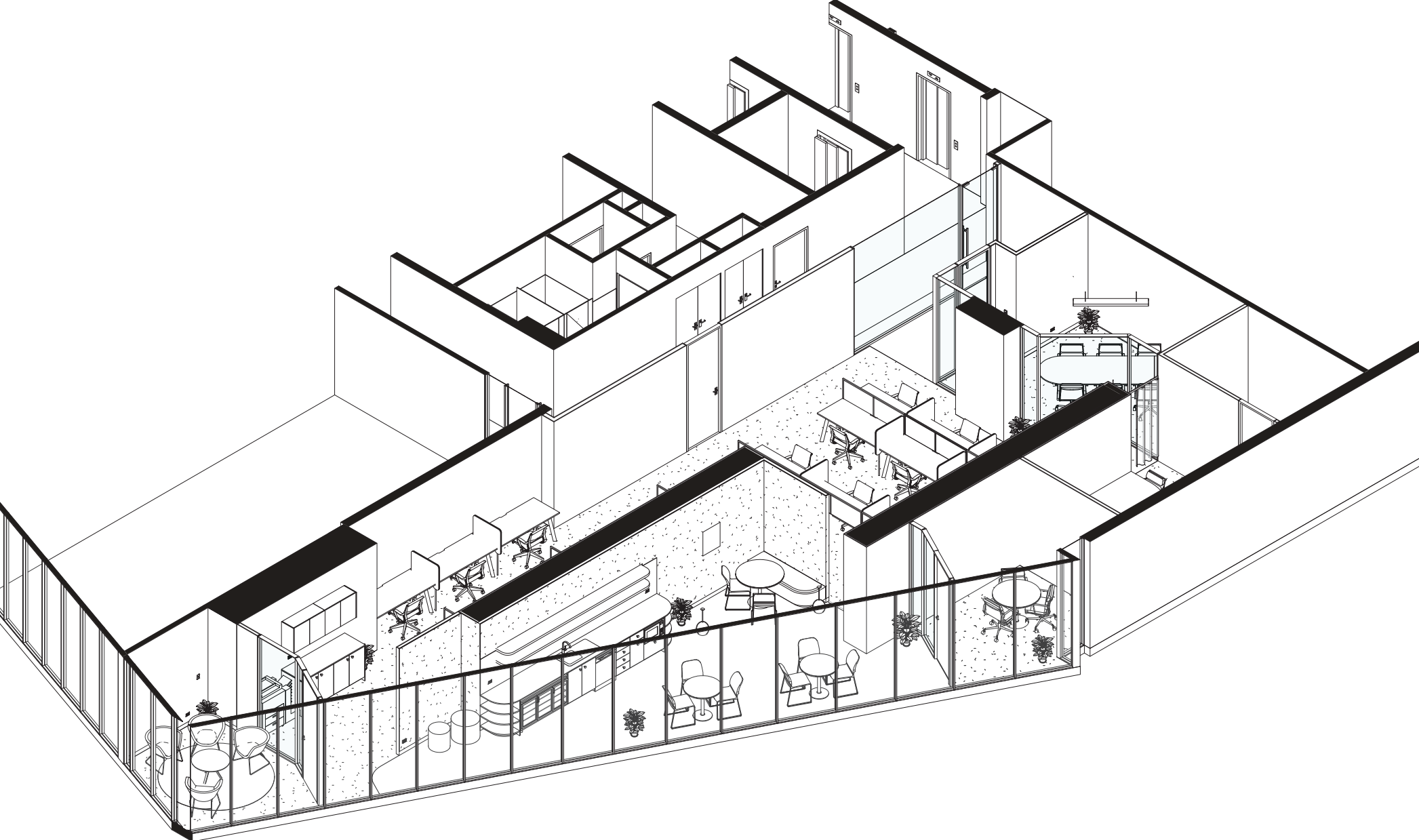
PROJECT  
SS20016 - FM AUSTRALIS, SUITE 6.03

DATE  
03.09.2020

STAGE  
MARKETING

DOCUMENT  
REVISION 1

# AXONOMETRIC VIEW



**STRUTT**

CLIENT  
FAR EAST ORGANIZATION

PROJECT  
SS20016 - FM AUSTRALIS, SUITE 6.03

DATE  
03.09.2020

STAGE  
MARKETING

DOCUMENT  
REVISION 1

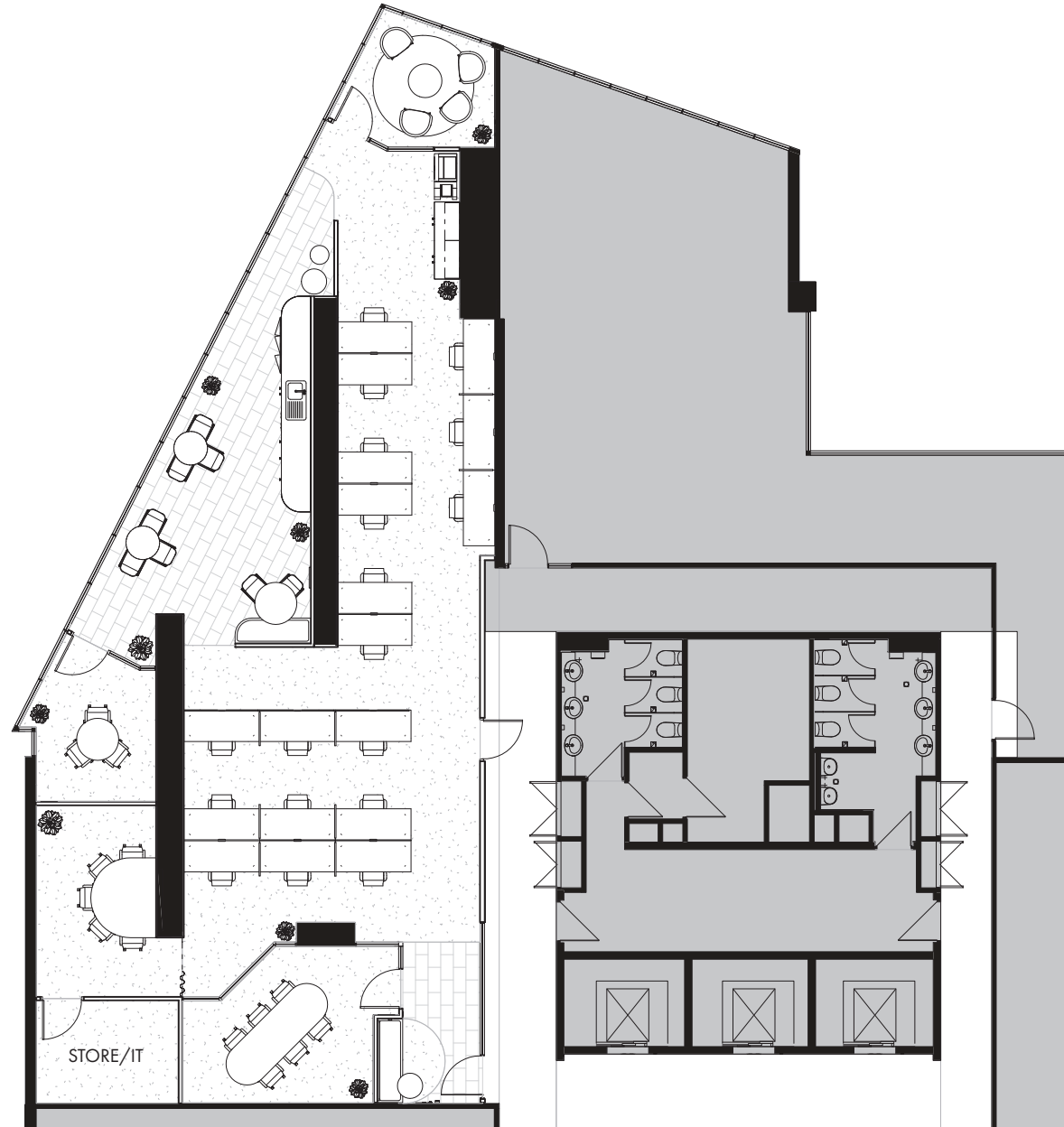
# FLOORPLAN

## LEGEND: SUITE 6.03

215m<sup>2</sup> TOTAL AREA (APPROX. NLA)  
18 TOTAL STAFF

11.9m<sup>2</sup> DENSITY (PER PERSON)

- 1x WAITING AREA
- 1x BOARDROOM
- 2x MEETING ROOMS
- 1x OPEN PLAN AREA (18 PAX)  
- 1800mm WORKSTATIONS
- 1x CASUAL MEETING ROOM
- 1x KITCHEN & BREAKOUT AREA
- 1x UTILITIES & PRINT AREA
- 1x STORE/IT ROOM



DRAWING NOT TO SCALE

**STRUTT**

CLIENT  
FAR EAST ORGANIZATION

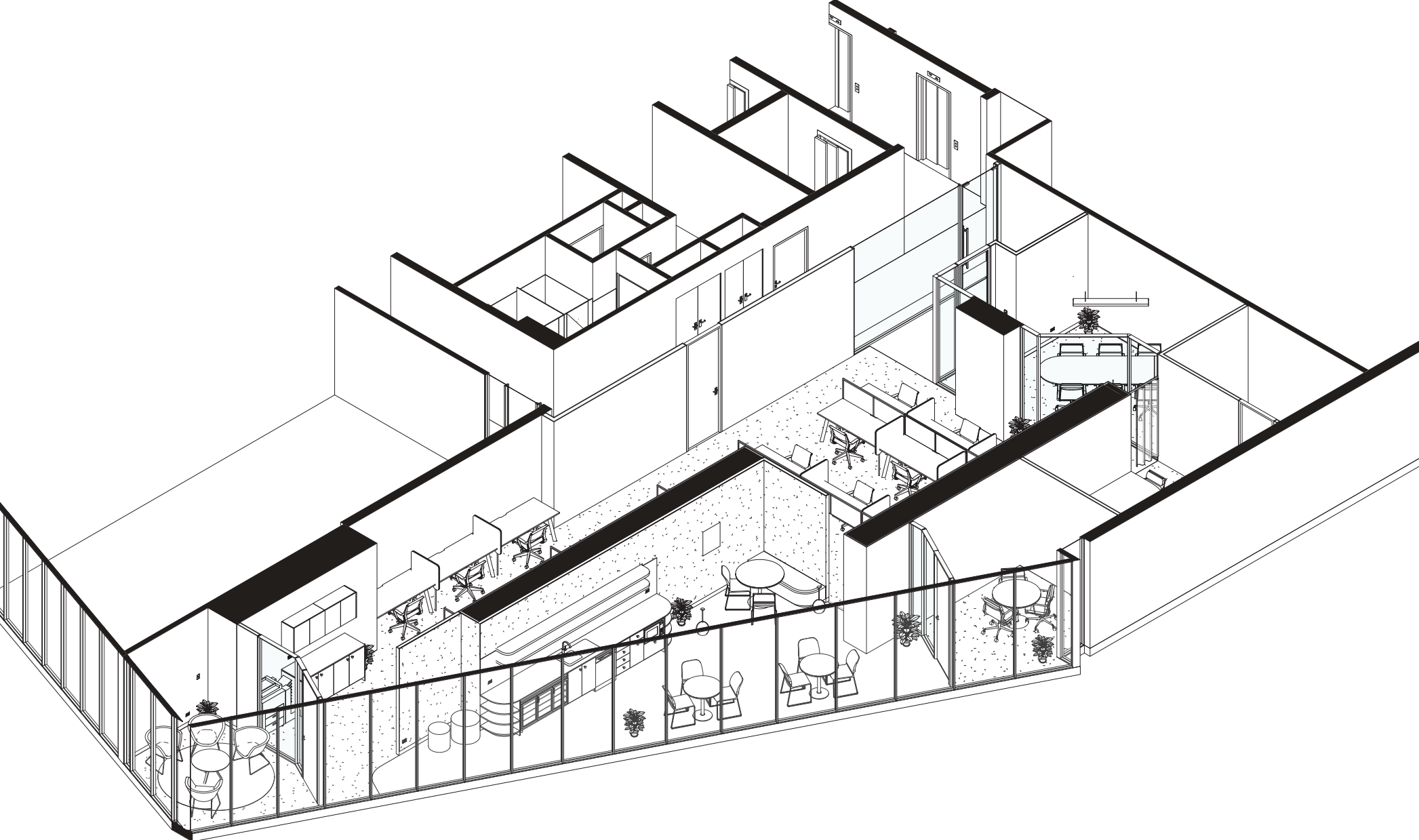
PROJECT  
SS20016 - FM AUSTRALIS, SUITE 6.03

DATE  
03.09.2020

STAGE  
MARKETING

DOCUMENT  
REVISION 1

# AXONOMETRIC VIEW



**STRUTT**

CLIENT  
FAR EAST ORGANIZATION

PROJECT  
SS20016 - FM AUSTRALIS, SUITE 6.03

DATE  
03.09.2020

STAGE  
MARKETING

DOCUMENT  
REVISION 1