

**FOR SALE**

**MORLEY**

**Lots 1, 2 & 10 / 19 Rudloc St**



**OFFICE / SHOWROOM /  
WAREHOUSE**

- 500 m from Morley Galleria Shopping Centre
- Full Street Exposure
- Extensive On-Site Parking
- 3 separate lots - 259 sqm (+exclusive use area)
  - 170 sqm
  - 168 sqm

---

**PHONE 24 HOURS  
9228 2255  
[www.metwaywa.com](http://www.metwaywa.com)**

**Metway Real Estate**

# FOR SALE

# Lots 1, 2 & 10 Rudloc St, MORLEY

## LOCATION

Situated only 500 metres from the substantial Galleria Shopping Centre, Bunnings Superstore Woolworths Supermarket, the premises are in the middle of the commercial and retail hub of Morley.

## PREMISES

The premises have been partially refurbished and offer good quality space that has the potential for conversion and use to a wide range of possible uses.

## OCCUPANCY

Vacant Possession

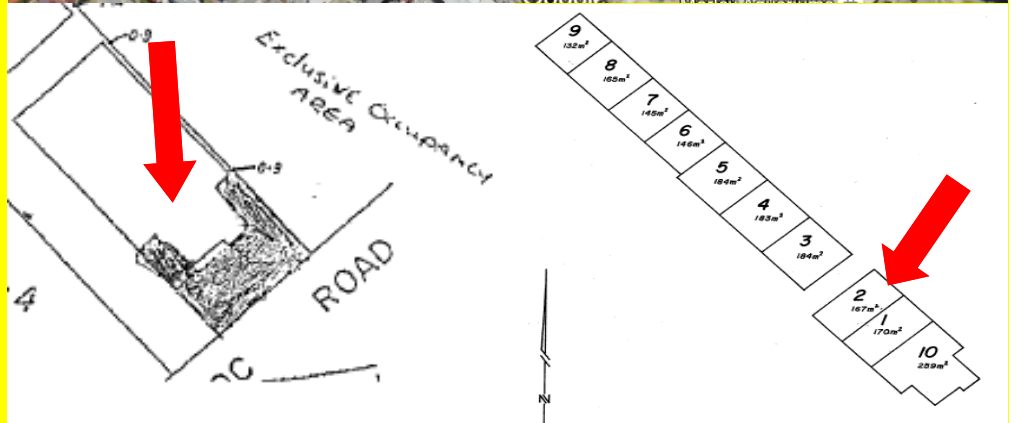
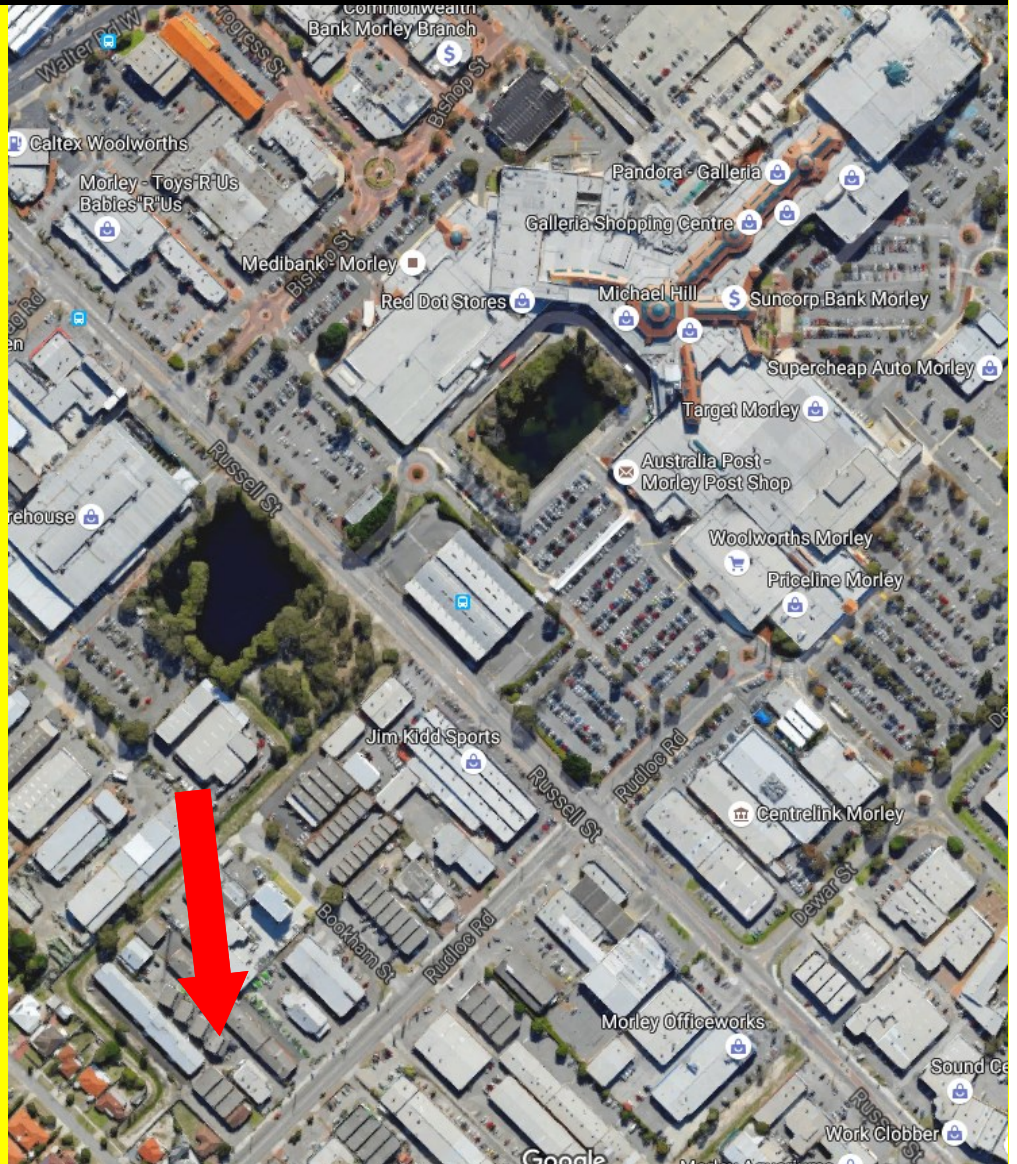
## STRATA AREA

Lot 10	259 sqm
Lot 1	170 sqm
Lot 2	168 sqm

\*Lot 10 enjoys an exclusive occupancy area' licence for a large portion of the street front of the Building area.

## ASKING PRICE

Lot 10	\$570,000
Lot 1	\$375,000
Lot 2	\$375,000



**Eric Rogers**  
☎ 0412 228 555  
✉ [egr@metwaywa.com](mailto:egr@metwaywa.com)

Disclaimer: The particulars contained in this brochure do not form part of any contract. While care has been taken in this presentation, no representation or warranty is made by the vendor/s or the selling agents. No responsibility is accepted for the accuracy of any information in this brochure. All persons must make their enquiries and satisfy themselves in all respects. Privacy Policy: The agents are committed to protecting your privacy. If at any time you choose not to receive information from them or wish to amend your personal information please notify them directly.

**PHONE 24 HOURS**  
**9228 2255**  
[www.metwaywa.com](http://www.metwaywa.com)