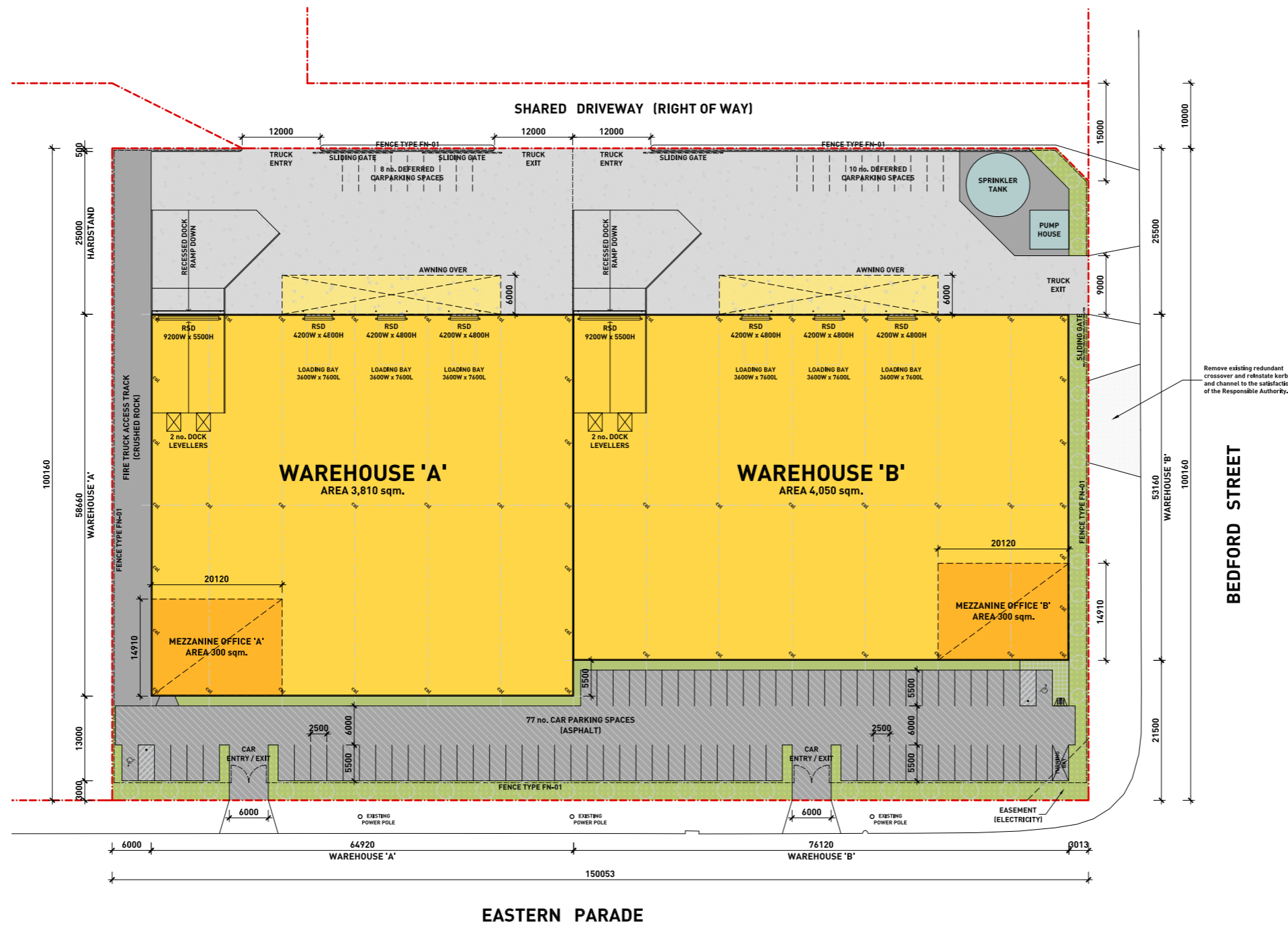


SITE PLAN.



Remove existing redundant crossover and reinstatement kerb and channel to the satisfaction of the Responsible Authority.

DEVELOPMENT SUMMARY WAREHOUSE A&B	
Total Site Area	15,016 sqm
Warehouse Area 'A'	3,810 sqm
Mezzanine Office Area 'A'	300 sqm
Warehouse Area 'B'	4,050 sqm
Mezzanine Office Area 'B'	300 sqm
Total Building Area	8,460 sqm
Total Heavy Duty Paving	3,340 sqm (approx.)
Total Light Duty Paving	2,090 sqm (approx.)
Total Awning Area	400 sqm (approx.)
Total Landscape Area	720 sqm (approx.)
Car Parking Provided Up Front	77 Spaces
Car Parking Deferred	18 Spaces
Total Car Parking Provided	95 Spaces

	Scale 1:400 @ A1	
	1502-198-DA-002	
	09.11.2015	A

© 2015 Frasers Property Australia Pty Limited. These drawings are subject to copyright and may not be copied, used or reproduced in any way without the express permission of Frasers Property Australia Pty Limited. All areas written on drawings are approximate only and are subject to confirmation by survey.