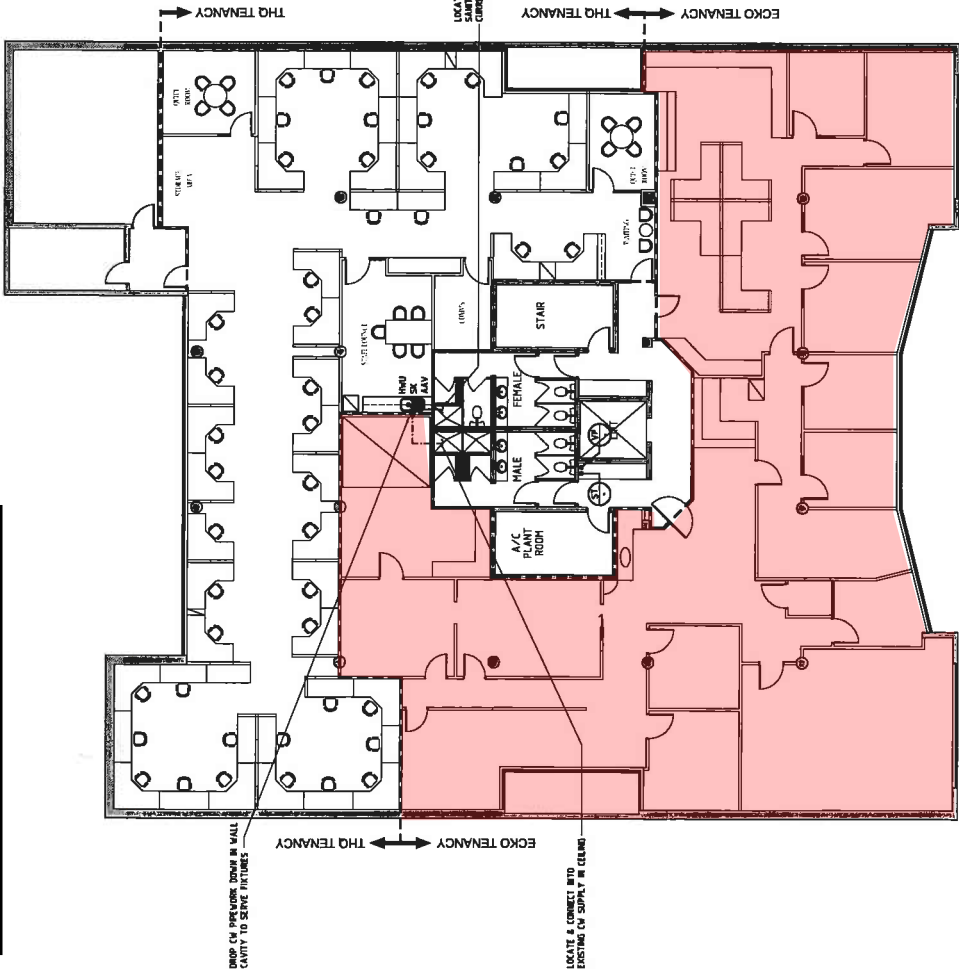


426sqm (Approx and Subject to Survey)



DRIP CH PIPEWORK SHOWN IN WALL CAVITY TO SERVE PATIOSES

THQ TENANCY

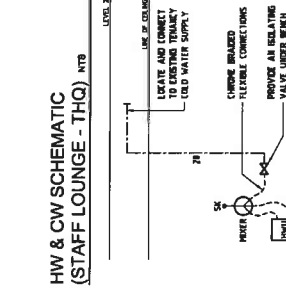
EKO TENANCY

LOCATE & CONNECT INTO EXISTING CW SUPPLY IN CEILING

LOCATE & CONNECT INTO EXISTING CURBULY SERVING TRAILS

THQ TENANCY

EKO TENANCY

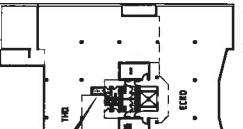


HW & CW SCHEMATIC (STAFF LOUNGE - THQ) INTS

LEVEL 1



LOCATION PLAN INTS



EXTENTS OF WORKS

ASTOR TERRACE

LEGEND

- SOLATING VALVE (W/ AIR ISOLATING VALVE)
- AIR ISOLATING VALVE
- SANITARY PLUMBING PIPEWORK
- VENT PIPEWORK
- CW PIPEWORK
- HW PIPEWORK
- DRAIN VENT
- SANITARY WASTE STACK
- COLD WATER
- HOT WATER
- HOT WATER UNIT
- SEWER

DRAINAGE PLAN NO. 488
 REAL PROPERTY DETAIL:
 LOT 1 ON R.P. 210219
 PARISH OF NORTH BRISBANE
 46959164 ASTOR TERRACE, SPRING HILL, QLD, 4000

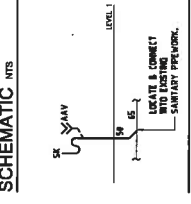
OWNER: CITY VIEW PROPERTIES Pty. Ltd.
 TENANT: THQ
 TITLE: FREEHOLD
 LOCAL AUTHORITY: BRISBANE CITY COUNCIL
 DATUM: AHD
 DESIGNER: KEN CRASE

THESE DRAWINGS HAVE BEEN DESIGNED IN ACCORDANCE WITH THE FOLLOWING STANDARDS:
 AS/NZS 3500 - "NATIONAL PLUMBING & DRAINAGE ACCEPTABLE SOLUTIONS"

SCOPE OF WORKS

- LOCATION OF EXISTING SERVICES HAS BEEN DETERMINED FROM SITE SURVEY AND VISUAL INSPECTION. THE LOCATION OF EXISTING SERVICES MUST BE MAINTAINED AND THE CONTRACTOR SHALL ADVISE ALL SERVICES BEFORE COMMENCING CONSTRUCTION AND ADVISE THE SUPERVISOR. ALL SERVICES ARE TO BE MAINTAINED AT ALL TIMES AND NO WORK SHALL BE PERFORMED ON ANY SERVICE WITHOUT THE CONTRACTOR'S WRITTEN CONSENT. ALL SERVICES SHALL BE MAINTAINED AT ALL TIMES AND SHALL BE MAINTAINED AT ALL TIMES WITH ALL OTHER SERVICES. PIPEWORK SHOWN ON THIS DRAWING IS DIAGNOSTIC ONLY. DETERMINE FINAL LOCATIONS ON SITE.
- CARRY OUT ALL WORK IN ACCORDANCE WITH THE REQUIREMENTS OF AS/NZS 3500 - "NATIONAL PLUMBING & DRAINAGE ACCEPTABLE SOLUTIONS" AND THE BUILDING CODE OF AUSTRALIA AND RELEVANT AUSTRALIAN STANDARDS.
- APPLY TO BRISBANE CITY COUNCIL FOR ALL NECESSARY PERMITS AND APPROVALS AND SUBMIT TO SUPERVISOR FOR REVIEW AND APPROVAL. SUBMIT TO SUPERVISOR USE COMMERCIAL FORM Y. FORMER THAN FOUR FEATURES.
- SUPPLY AND INSTALL ALL 100mm Ø CW PIPEWORK IN COPPER TUBE TYPE "B" TO AS/NZS 3500.1.1. CONNECT UPPER PIPE WITH BARBED JOINTS IN WALLS. PROVIDE 100mm Ø ISOLATED PIPING TO BE INSTALLED FOR HOT WATER SERVICES ON ISOLATE WITH "HYBRID" INSULATION OR SHALE.
- SUPPLY AND INSTALL ALL 100mm Ø HOT WATER PIPEWORK IN UPVC INSTALLED TO MANUFACTURES RECOMMENDATIONS. PROVIDE FIRE STOP COLLARS WHERE UPVC PIPEWORK PENETRATES THROUGH A FLOOR. THE PLUMBING CONTRACTORS EXPENSE.
- ALL SURFACES AND SERVICES DAMAGED OR DISTURBED DURING THE WORK SHALL BE REPAIRS TO ORIGINAL CONDITION OR BETTER. THE MATERIALS OF A SIMILAR NATURE TO MATCH EXISTING CONDITIONS AT THE PLUMBING CONTRACTORS EXPENSE.
- IDENTIFICATION OF ALL PIPEWORK SHALL BE "SHACTHYAN" ADHESIVE PIPE MARKERS OR EQUAL APPROVED IN ACCORDANCE WITH AS/NZS 3500.1.1. ALL PIPEWORK SHALL BE LABELLED WITH AN IDENTIFICATION PLATE DURING THE WORK.
- FINAL HW AND HOT WATER PIPEWORK SHALL BE 100mm Ø CW PIPEWORK CONNECTION TO FEATURES SHALL BE 100mm Ø.
- DO NOT USE ANY BENDS OR JOINTS TO PREVENT WATER HAMMER AND RECEIVE SHOULD IT OCCUR.
- NO WORK SHALL BE PERFORMED UNTIL THE POSITION OF ALL WORK IS CHECKED AND APPROVED BY THE CONTRACTOR. THE WORK SHALL BE PROTECTED FROM LEAKS BEFORE BEING FINALLY BUILT IN OR CONCEALED.
- THE ENTIRE HYDRAULIC SERVICES INSTALLATION AND EQUIPMENT SHALL BE MAINTAINED UNDER WARRANTY FOR A PERIOD OF TWELVE (12) MONTHS AFTER PRACTICAL COMPLETION HAS BEEN ACHIEVED.
- PROVIDE 25mm MINIMUM CLEARANCE OF WALLS AND EACH OTHER SO TO PROVIDE EASY ACCESS TO PIPEWORK.
- ON COMPLETION OF THESE WORKS THE CONTRACTOR SHALL CLEAN UP THE SITE AND CARRY AWAY ALL SURPLUS MATERIALS AND DEBRIS FROM THE CONTRACT TO THE SATISFACTION OF THE SUPERVISOR.
- ALL EXPOSED HW, CW & WASTE PIPEWORK TO VIEW SHALL BE COMPLETELY PAINTED UPON.
- PROVIDE THREE (3) SETS OF INSTRUCTIONS MANUALS AT PRACTICAL COMPLETION CONTAINING THE FOLLOWING:
 - GENERAL DESCRIPTION OF PROJECT
 - LISTING OF EQUIPMENT, MANUFACTURERS NAMES, AGENTS ETC.
 - OPERATING AND MAINTENANCE INSTRUCTIONS AND WARRANTY INFORMATION FOR EACH ITEM OF EQUIPMENT.
 - AS INSTALLED DRAWINGS.
 - COMPLETION REPORTS AND FINAL COMPLETION CERTIFICATE FROM RELEVANT AUTHORITIES.
- ALL DRAINAGE PIPEWORK SHALL BE 60mm UNLESS NOTED OTHERWISE.

SANITARY PLUMBING SCHEMATIC INTS



SANITARY PIPEWORK SIZES

FITTING / FEATURE	MINIMUM PIPE SIZE	Ø (mm)
TOILET		60
SINK		60

HOT WATER UNIT SCHEDULE

THQ STAFF LOUNGE OVER EXISTING SINGLE POINT WOODS No. 5885 (1/2" x 1/2" x 1/2" UNIFORM LONG SPOUT INLET TAP) INSTALLED IN ACCORDANCE WITH D5-2584A.



REVISION	DESCRIPTION	DATE
A <td>TENDER ISSUE <td>4.1.08</td> </td>	TENDER ISSUE <td>4.1.08</td>	4.1.08

NOTE
 © COPYRIGHT, THIS DRAWING REMAINS THE PROPERTY OF INTERIORS ENGINEERING AUSTRALIA AND IS NOT TO BE REPRODUCED OR COPIED IN ANY MANNER WITHOUT THE WRITTEN CONSENT OF INTERIORS ENGINEERING AUSTRALIA.

CONSULTANT
INTERIORS ENGINEERING
 CONSULTING ENGINEERS
 INTERIORS ENGINEERING - QUEENSLAND Pty Ltd
 LEVEL 4, 100, 102 AND 104 MCGILL STREET, MELBOURNE VIC 3000
 PH: (07) 3377 8888 FAX: (07) 3377 8807
 AUDITECT

CLIENT
 Unit 4, 20 Astor Terrace
 Spring Hill QLD 4000
Interiors Australia
 Unit 4, 20 Astor Terrace
 Spring Hill QLD 4000
 PH: (07) 3377 8888
 FAX: (07) 3377 8807

PROJECT
 THQ & EKO

DRAWING TITLE
 TENANCY FITOUT
 62 ASTOR TCE
 SPRING HILL

DRAWING NO.
 HYDRAULIC SERVICES
 LEVEL 1

DRAWING DATE
 DRAWN BY: BJS
 CHECKED BY: BJS
 DATE: 06/01/08

REVISION
 5669
H1
 A