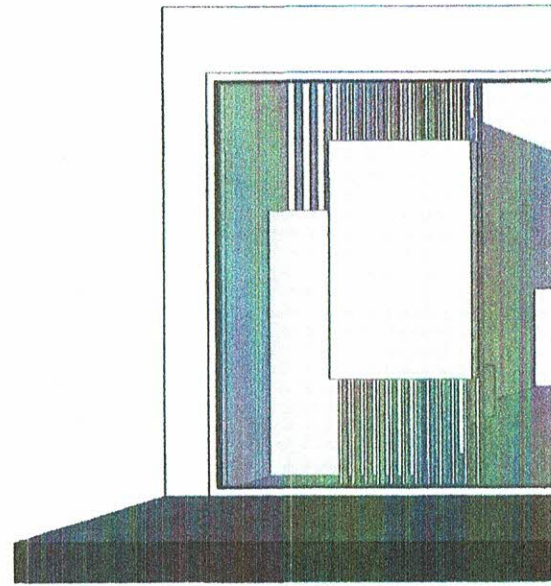


LIVERPOOL ST
FLOOR PLAN
1:100

- WAITING
- MEETING POD/ONLINE BANKING
- MEETING ROOM
- TELLER + STRONG ROOM
- WORK SPACE
- ACCESSIBLE WC
- UTILITY
- KITCHEN



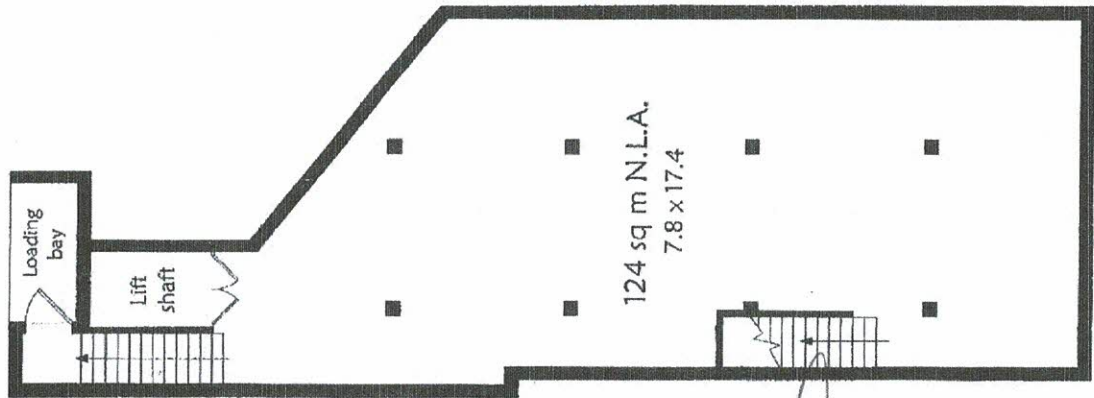
3D VIEW

MY CHEMIST

116 Liverpool Street, Hobart.

Total N.L.A.: 390 sq metres.

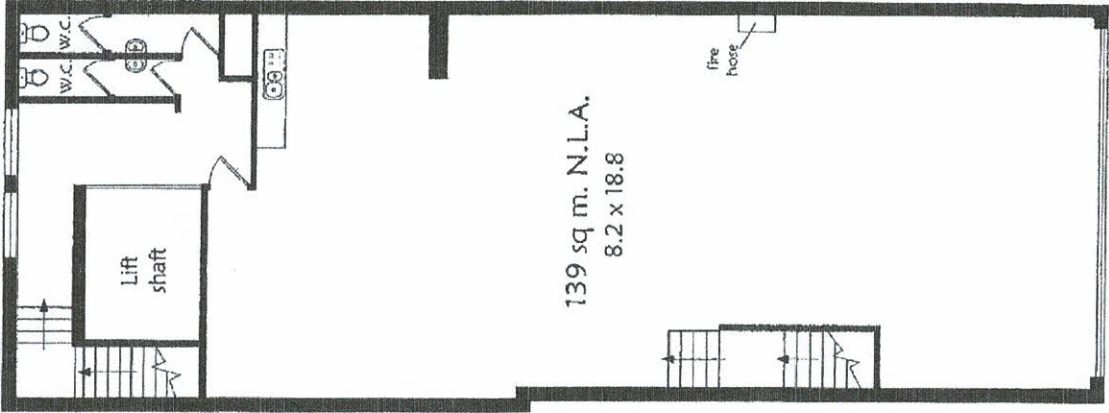
Rear access from Murray Street →



Basement



Street level



Upper level

0 1 2 3 4 5m
IMPORTANT: Measurement and areas are approximate. Interested parties need to verify.

