

RayWhite®

Shop 1-

- * 151 square meters Approx.
- * Main street frontage
- * Kitchen
- * Separate toilet with laundry and shower
- * Own small court yard
- * Currently rented for \$660 pw

Office 1-

- * 104 square meters approx.
- * 3 office rooms
- * Kitchen
- * Ducted heating & cooling
- * Generous size bathroom
- * Currently rented for \$418 pw

Office 2-

- * 104 square meters approx.
- * 3 office rooms
- * Kitchen
- * Ducted heating & cooling
- * Generous size bathroom
- * Currently rented for \$440 Inc gst per week

Shop 2-

- * Rear Showroom - 310 square metres approx.
- * Store 668 square meters approx.
- * Covered Loading Dock 52 square meters approx.
- * Adjoining council parking lot
- * Great access for trucks and machinery
- * Large show room floor
- * Parking spaces
- * Large warehouse perfect for storage
- * Kitchen
- * Mens and Womens toilets
- * Currently rented for \$530 pw



RayWhite.



378 Auburn Street, Goulburn RENT

- SHOP 2 - Tile Shop
- Office 2 - Life without borders
- Office 1 - Gaddson
- SHOP 1 - Kicks Footwear

Per week

- \$530.37
- \$440.00
- \$418.00
- \$660.00

Per year

- \$27,579.24
- \$22,880.00
- \$21,736.00
- \$34,320.00

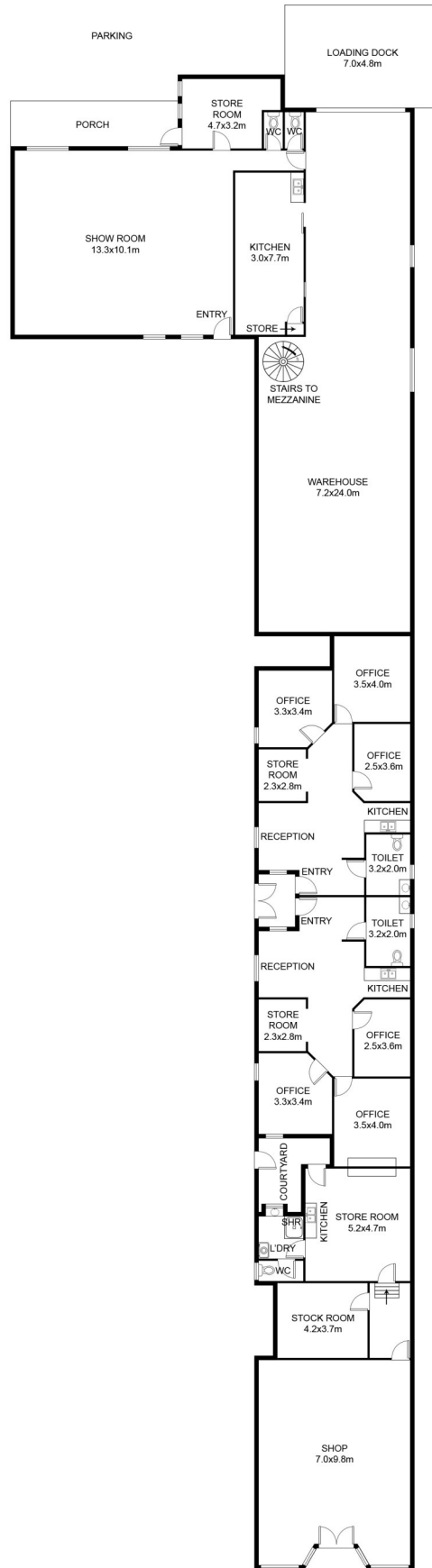
Total

\$2,048.37

\$ 106,515.24

Water Rates

\$1,868.40 \$4,000.00



FLOOR PLAN



338AuburnStGoulburnNSW



378 AUBURN STREET, GOULBURN, NSW 2580
Unit

1 - 859 m²

RayWhite[®]

Ray White Goulburn

Justin Gay

0429795 507

justin.gay@raywhite.com