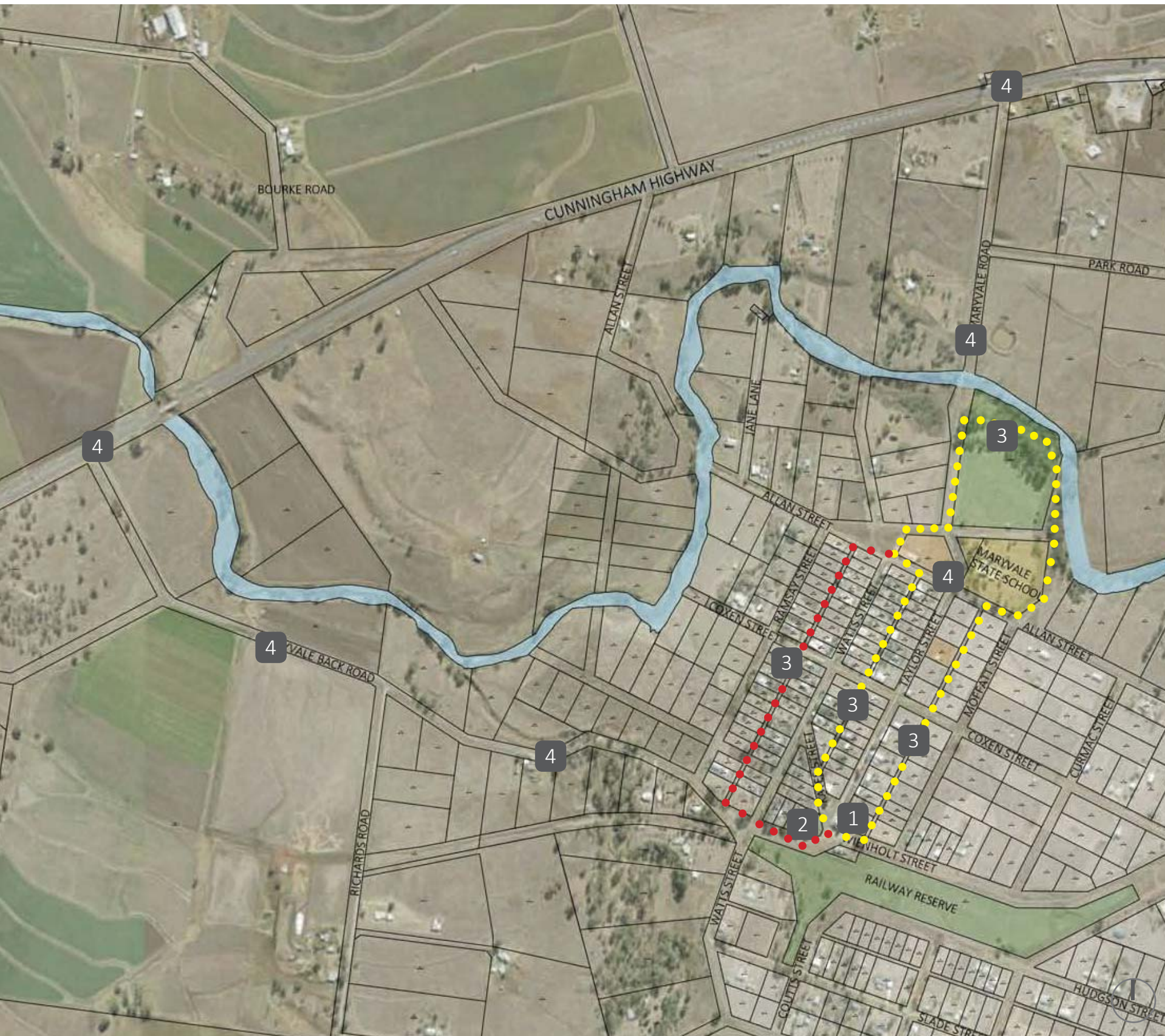




# Maryvale Futures: An Urban Design Framework

# Priority Project: Beautifying Maryvale



## BACKGROUND

In 2018 Southern Downs Regional Council (SDRC) undertook community consultation to complete an urban design framework for the Maryvale community. These planning frameworks help SDRC identify projects and strengthen the implementation of the Shaping Southern Downs document by providing finer grain details on how best to help distinct townships: grow, prosper, connect and sustain their unique identities. The frameworks are developed after consultation with the local community and Council, with the projects identified being used to inform future Council budgets, strategic planning, capital and service delivery priorities. They are also utilised to help leverage funding or grant opportunities from State and Federal Governments.

Consultation processes were undertaken on the following dates:

Maryvale Futures Workshop – 18 May 2018

Community Consultation – 3 August 2018 to 24 August 2018

Public meeting – 22 October 2018

Meeting with Maryvale Progress Association – 7 December 2018

Based on the findings of community consultation and the direction of the urban framework, projects were identified in for four emergent themes. The vision for these projects is to make Maryvale a more attractive place to visit, live and work.

### 1. PROSPER – The Town Centre

The pub and its recent change of ownership have re- focused the pub as the centre of town and are creating a new energy in the town centre. By enhancing the pub's street presence to give it more context, amenity and reinforce the 'town core' feel and look of this part of Taylor Street.

### 2. SUSTAIN – Maryvale Park

This park is in the core of town and already has a reasonable relationship with the pub. By enhancing its relationship to the pub precinct it starts to create a more cohesive town centre and allows the two spaces to mutually support each other. It also provides a greater destination, encouraging visitors as well as providing a better experience for community.

### 3. CONNECT – Night Soil Lanes to Become Iconic Tree Lined Trails

The 'Night Soil' lanes offer a unique opportunity to reinforce and bring to light a seldom seen oddity from Maryvale's beginnings, when it was first subdivided. The little used lanes offer opportunity for a landscape intervention of feature tree planting (shown in red and yellow on the map) and a pedestrian circuit linking parks and laneways back to the centre. The lanes can offer visual amenity, a striking tourist feature that can be seen from Cunningham Highway, and pedestrian only spaces which can be used for linear markets.

### 4. GROW – Landscaping of Streets and Reserves

By early planting of colorful flowering trees along the main roads through town and at the major entrances, it provides a long term amenity and iconic character that will give Maryvale a unique identity and draw tourists to the town.

# Priority Project

## 1. PROSPER - Town Centre



### Legend

- Existing Pedestrian path
- Proposed Pedestrian path
- Boundary
- Sight lines

### Reclaim road reserve to maximise park and pub frontages





- A** Install bollards to narrow road as far as possible at this point and enhance pedestrian safety
- B** Create formalised pedestrian crossing
- C** Install Turf and exposed aggregate concrete pavements to Weinholt Street Corner to allow for formalised outdoor dining / events as well as give pub a more complete context and 'Town Centre' feel whilst retaining the 'country pub' character. No trees in front of pub corner to retain exposure.
- D** Install timber post and rail fence to give better spatial definition, enhance safety of people using outdoor area and to focus people towards
- E** Install path heading east to connect to the night soil lanes.
- F** Formalise parking to pub frontage and on opposite side of Weinholt Street. Use bollards and post & rail detail to define road edge
- G** Allow short term concessions to pub to have small numbers of Caravan/RV short term stays until Grey nomad parking area established opposite on Weinholt St Reserve.

# Priority Project

## 2. SUSTAIN - Maryvale Park



### Legend

-  Existing Pedestrian path
-  Proposed Pedestrian path
-  Boundary
-  Sight lines

- A** Reclaim unused road reserve and turf to reduce visual gap between park and pub
- B** Install 1.8m high fence to adjacent residence to give better privacy and give better definition of public vs private space
- C** Install timber post and rail fence to park corners to enhance country character, create better spatial definition, enhance safety for children playing in park and funnel pedestrians through formalised crossing.
- D** Upgrade lighting to be more effective to enhance night time safety and allow more after dark use
- E** Install community bore with key provided to local residences to top up tanks in dry weather. Potential for caravan / rv visitors to use, managed by pub.
- F** Create larger flat kickabout space
- G** Refurbish or replace current shade structure
- H** Replace existing picnic structures with more, larger and contemporary shelters
- I** Refurbish existing play equipment
- J** Add additional play equipment, with particular focus on nature and adventure play
- K** Install non-moving part fitness circuit
- L** Add running water to toilet and refurbish / replace lighting
- M** Interim community vegetable patch

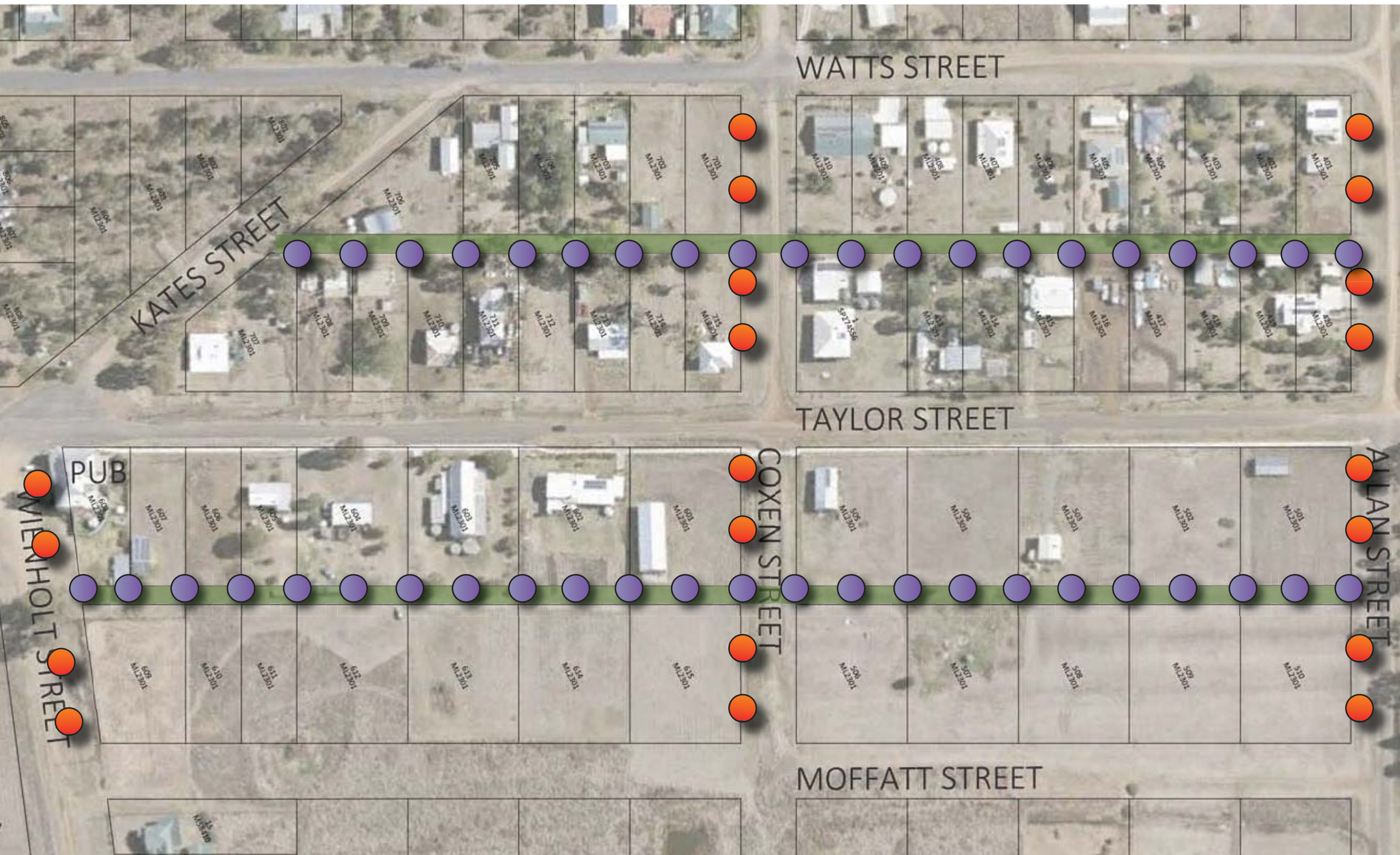
# Priority Project

## 3. CONNECT - Night Soil Lanes



# Priority Project

## 3. CONNECT - Night Soil Lanes



Legend

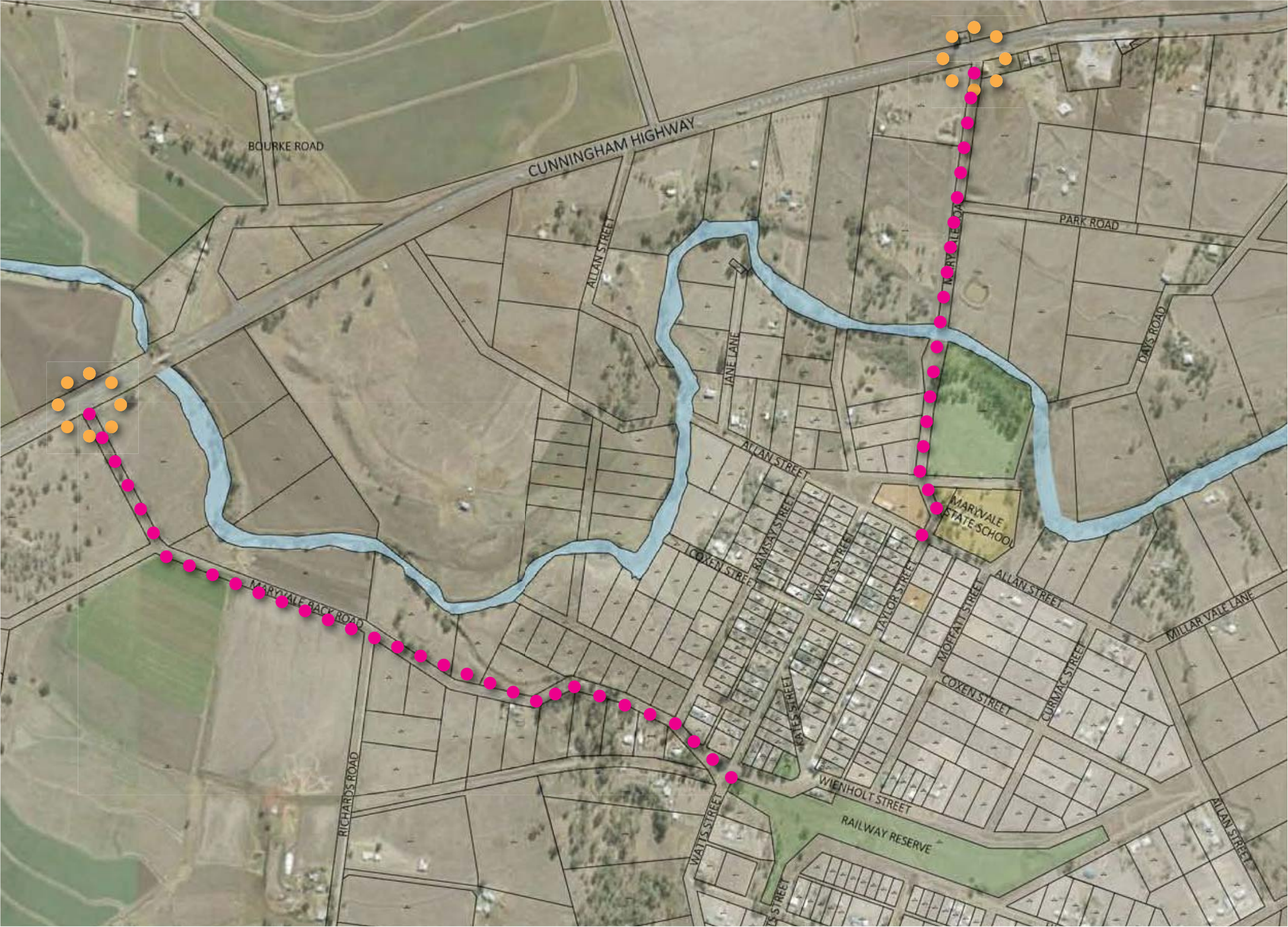


Acer species; East- West Streets



# Priority Project

## 4. GROW - Street Trees



Clusters of Grevillia Robusta (Silky Oak) at two main intersections into town



Lagerstroemia species (Crepe myrtle) along two main roads into town



# PROJECTS

PROJECT		LEVEL OF PRIORITY
CONNECT and GROW		
Street tree planting (see map on Page 7) with suitable species to enhance character and shade		High
Decontaminate former rail reserve, and plant this area with indigenous trees. Provide walking tracks within this area, and make this a focal recreation point.		High
PROSPER – Town centre (see map on Page 3)		
A	Reclaim road reserve to maximise park and pub frontages. Install bollards to narrow road and enhance pedestrian safety	High
B	Create formalised pedestrian crossing	Medium
C	Install turf and exposed aggregate concrete pavements to Weinholt Street Corner to allow for formalised outdoor dining/events as well as give pub a more complete context and 'Town Centre' feel whilst retaining the 'country pub' character.	Medium
D	Install suitable fencing to give better spatial definition, enhance safety of people using outdoor area and to focus people towards the pub	High
E	Formalise parking to pub frontage and on opposite side of Weinholt Street. Use bollards and post & rail detail to define road edge	Medium
F	Future RV & Caravan/Camping area with Millarvale Park and the former rail reserve to be possible options for its location	Long term
SUSTAIN – Maryvale Park (see map on page 4)		
A	Reclaim unused road reserve and turf to reduce visual gap between park and pub	High
B	Install a quality fence/wall to the along the boundary between the park and adjoining residence to better define public and private space	High
C	Install suitable fencing to park corners to enhance country character, create better spatial definition, enhance safety for children playing in park and funnel pedestrians through formalised crossing	Medium
D	Upgrade lighting to be more effective to enhance night time safety and allow more after dark use, including the use of preference for solar bollards	Medium
F	Create larger flat kickabout space in the Maryvale park	Long term
G	Refurbish or replace current shade structure	Medium
H	Replace existing picnic structures with more, larger and contemporary shelters	Long term
I-K	Refurbish existing play equipment, add additional play equipment, and include a non-moving part fitness circuit	Medium
L	Add running water to toilet and refurbish/replace lighting	Long term
M	Consider integrating a community vegetable garden	Long term