



Gosford Health Hub

Floorplan Brochure

60-64 Showground Rd,
Gosford, NSW
Australia 2250

Creating Thriving Health Hubs

We create accessible healthcare for everyone, creating a continuum of care through Primary and Specialist Health Hubs.

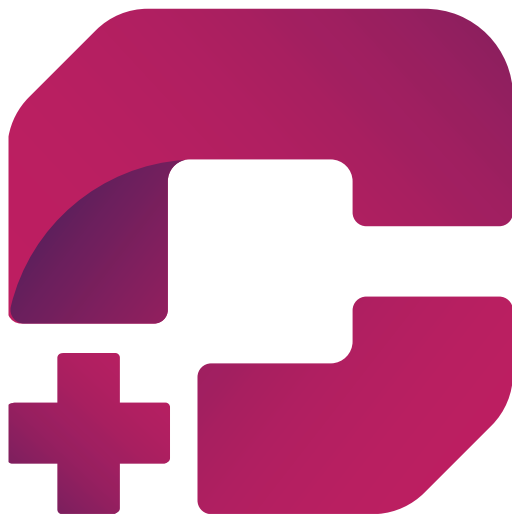
Designed to offer complimentary and supportive services, our Specialist Health Hubs are located within close proximity to both public and private hospitals.

The future of healthcare is integration and reimagining the patient experience. Our Health Hubs provide Specialists with direct opportunities

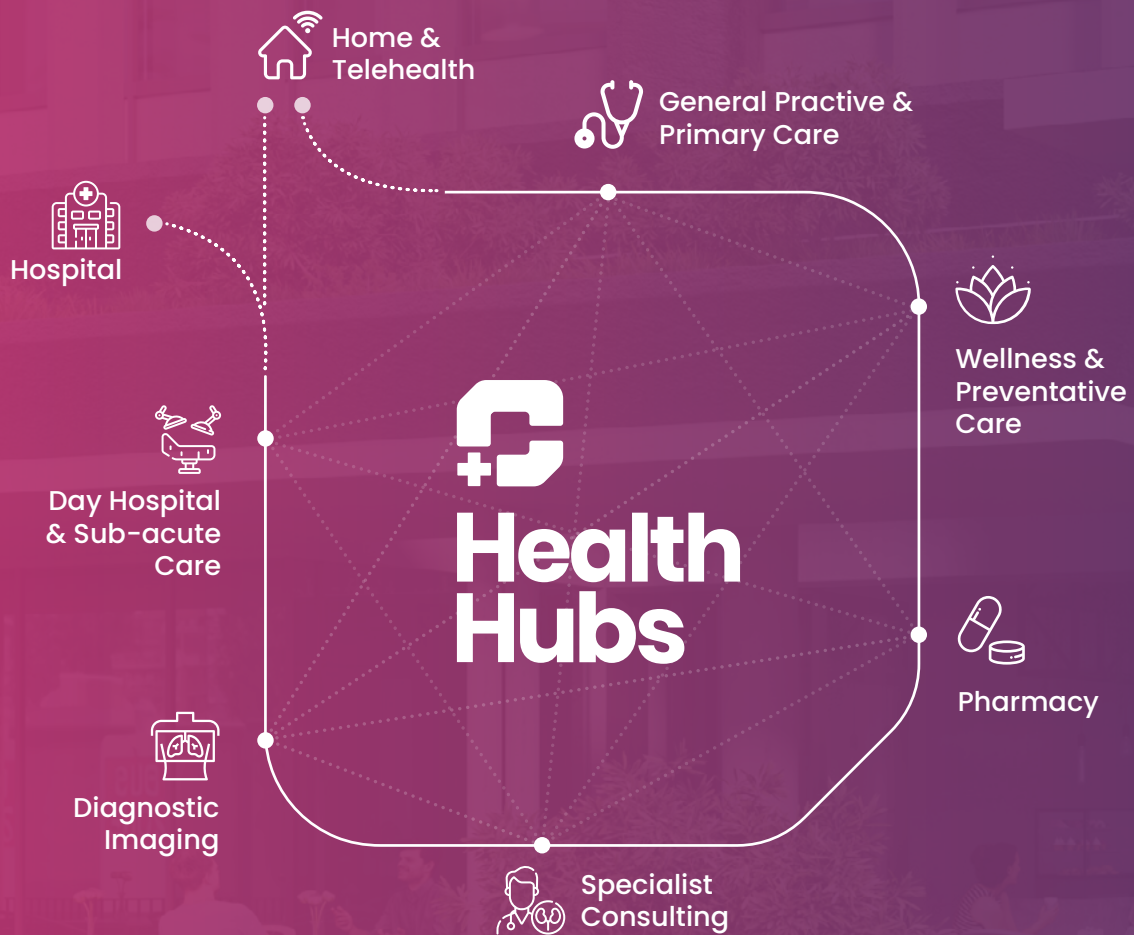
to make a meaningful impact on the local community.

Our passion for healthcare is people-focused and our desire to see communities thrive is ingrained in all that we do.

Opportunities are open for all medical professionals to be at the forefront of healthcare integration. Secure your space now in this state-of-the-art integrated Health Hub.



The future of healthcare is **integration** and reimagining the patient experience.



Every Australian community
needs a thriving 'end to end'
integrated health centre.

www.healthhubs.com.au



Join Gosford's Newest
Integrated Health Centre
Delivering Patient Centred Care.



Sales & Leasing Options Available

Snapshot

Gosford Health Hub is strategically located within the Central Coast Health District, situated adjacent to the Gosford Hospital. The Health Hub is conveniently located within walking distance to public transport providing the perfect linkage to the Central Coast Business District.

Key Elements

- Purpose-built to facilitate collaborative patient-centred care
- High exposure site
- Medical class 9a building
- Accessible via public transport routes
- Abundant basement car parking
- Flexible tenancy, strata, and consulting suite options
- Integrated fit-out options, 'Your Practice. Your Way.'
- Prominent signage opportunities available



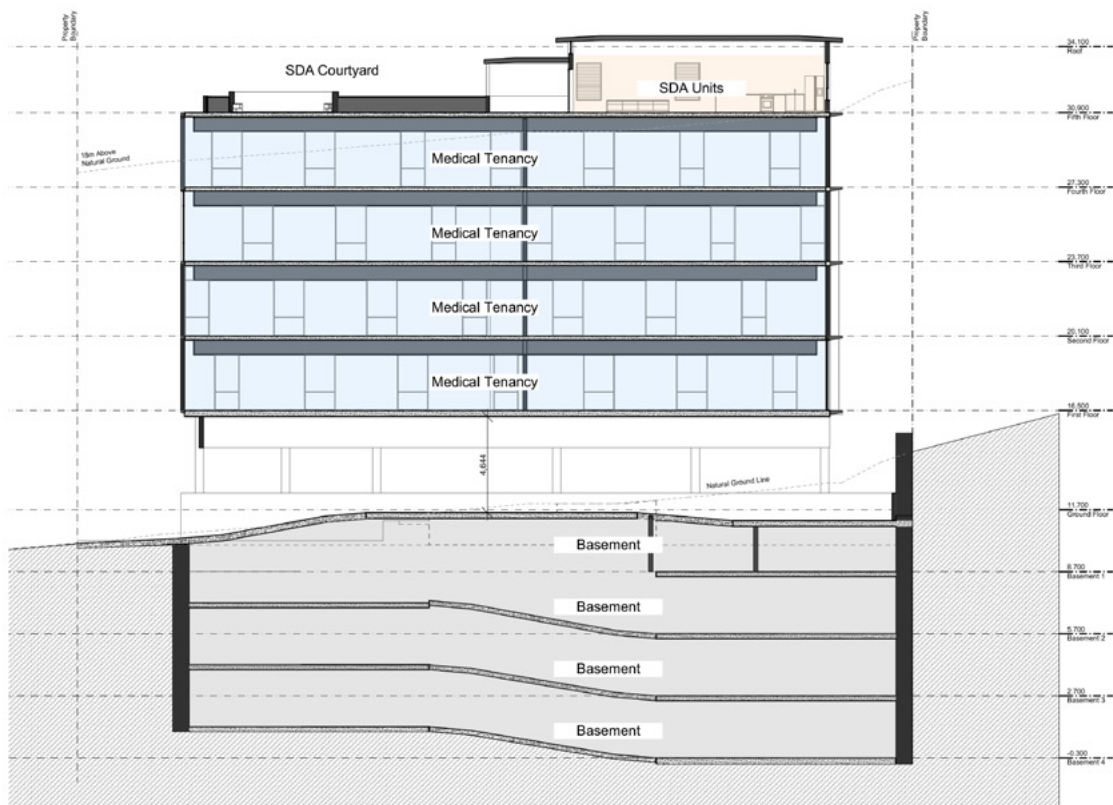
The Future of Healthcare

Gosford Health Hub will be the largest private integrated healthcare centre transforming the delivery of care to the surrounding communities. This new development will bring an extension of services to support the current and future healthcare needs of Gosford.

Located on Showground Road, Gosford Health Hub with five floors of possibilities for healthcare professionals to develop, grow, create, or begin their journey.

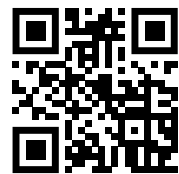
Floor Plan

- Rooftop Terrace
- Level 4 $\geq 1500\text{m}^2$
- Level 3 $\geq 1500\text{m}^2$
- Level 2 $\geq 1500\text{m}^2$
- Level 1 $\geq 1800\text{m}^2$
- Ground Floor $\geq 1000\text{m}^2$
- Basement 1 ≥ 48 Car Parks
- Basement 2 ≥ 71 Car Parks
- Basement 3 ≥ 71 Car Parks
- Basement 4 ≥ 72 Car Parks



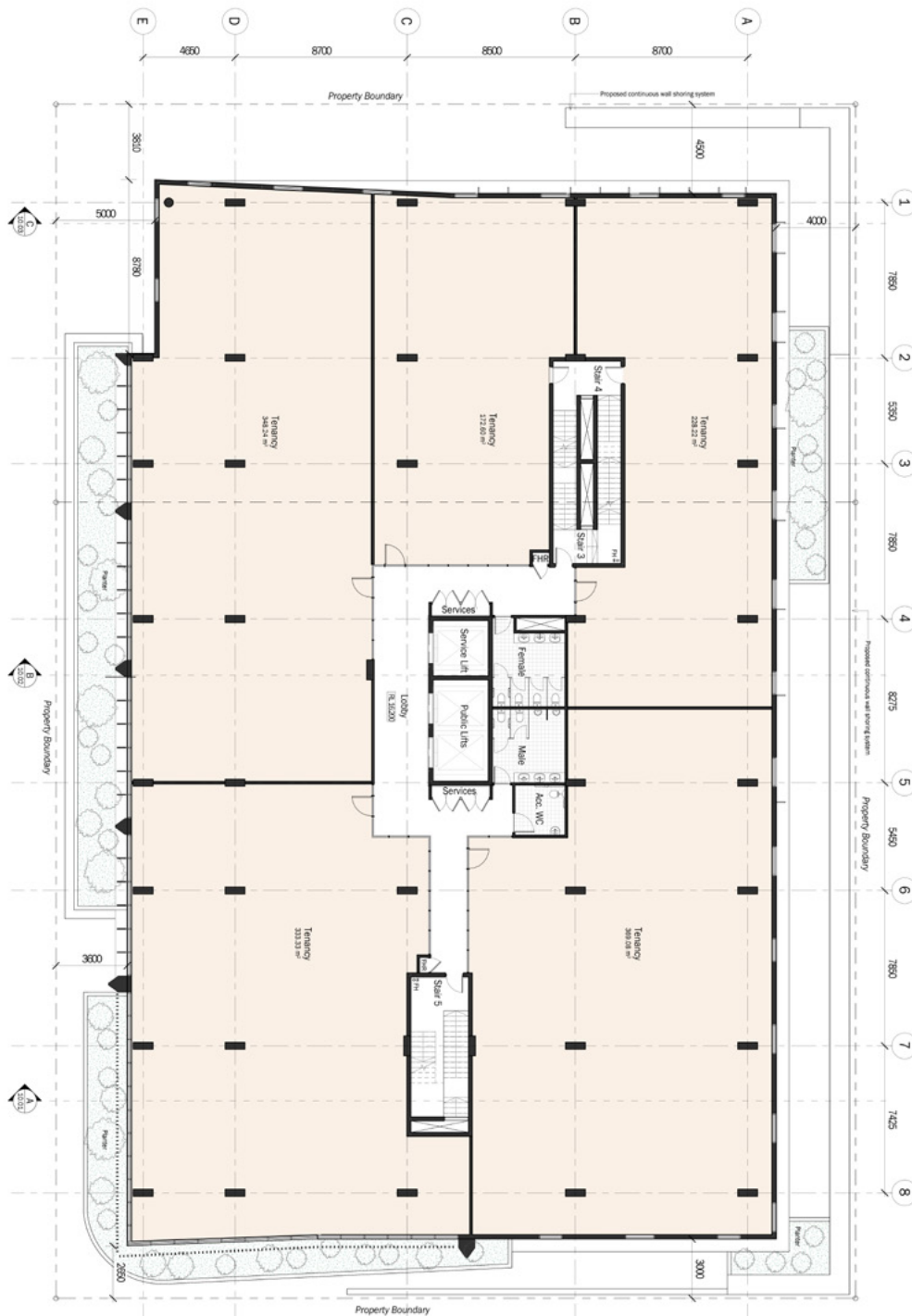


**Integrated Health
Hubs focused on
continuum of care.**



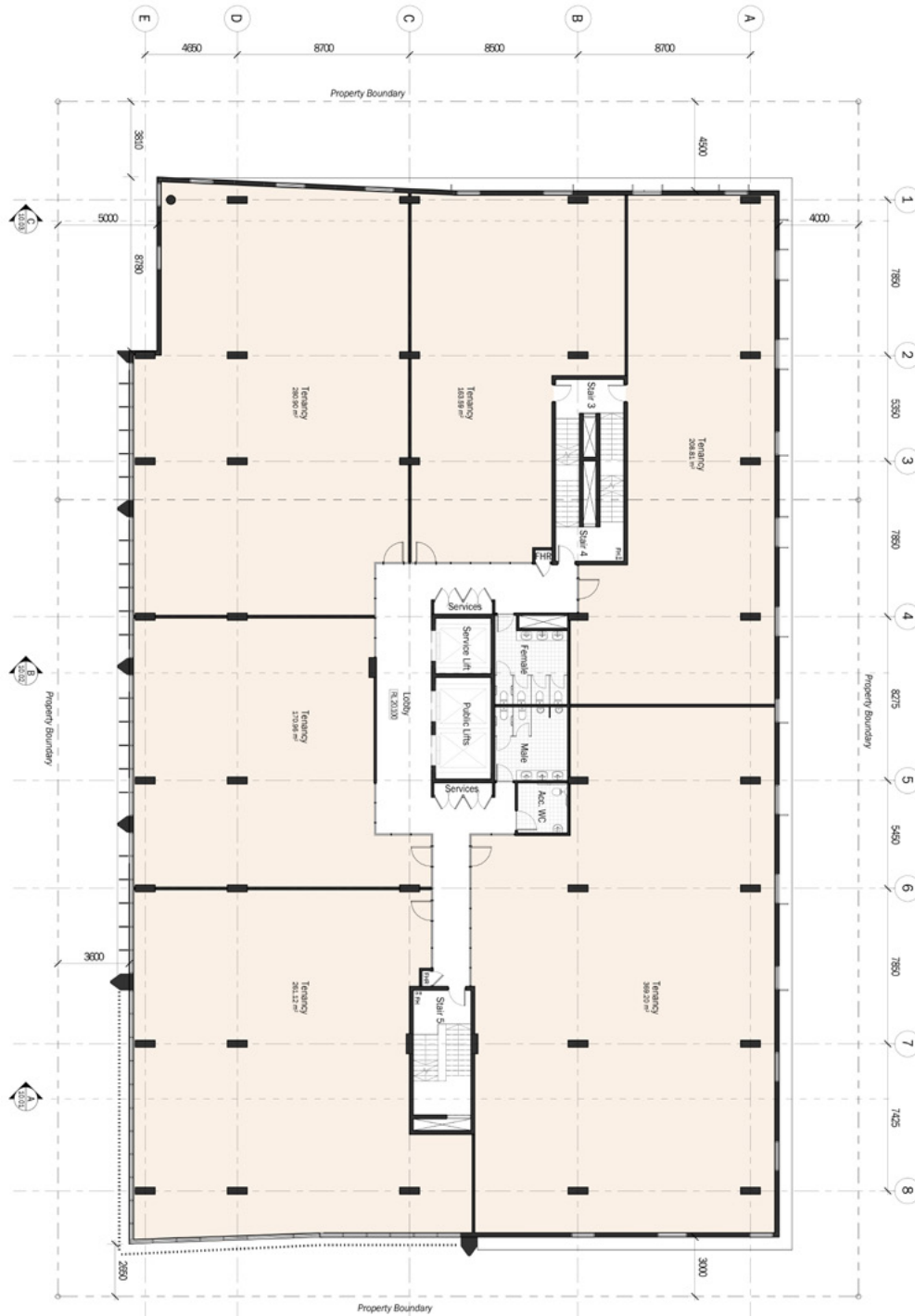
**Beerwah, QLD • Canberra, ACT • Chermside, QLD
North Lakes, QLD • Gosford, NSW • Nepean, NSW**

Level One



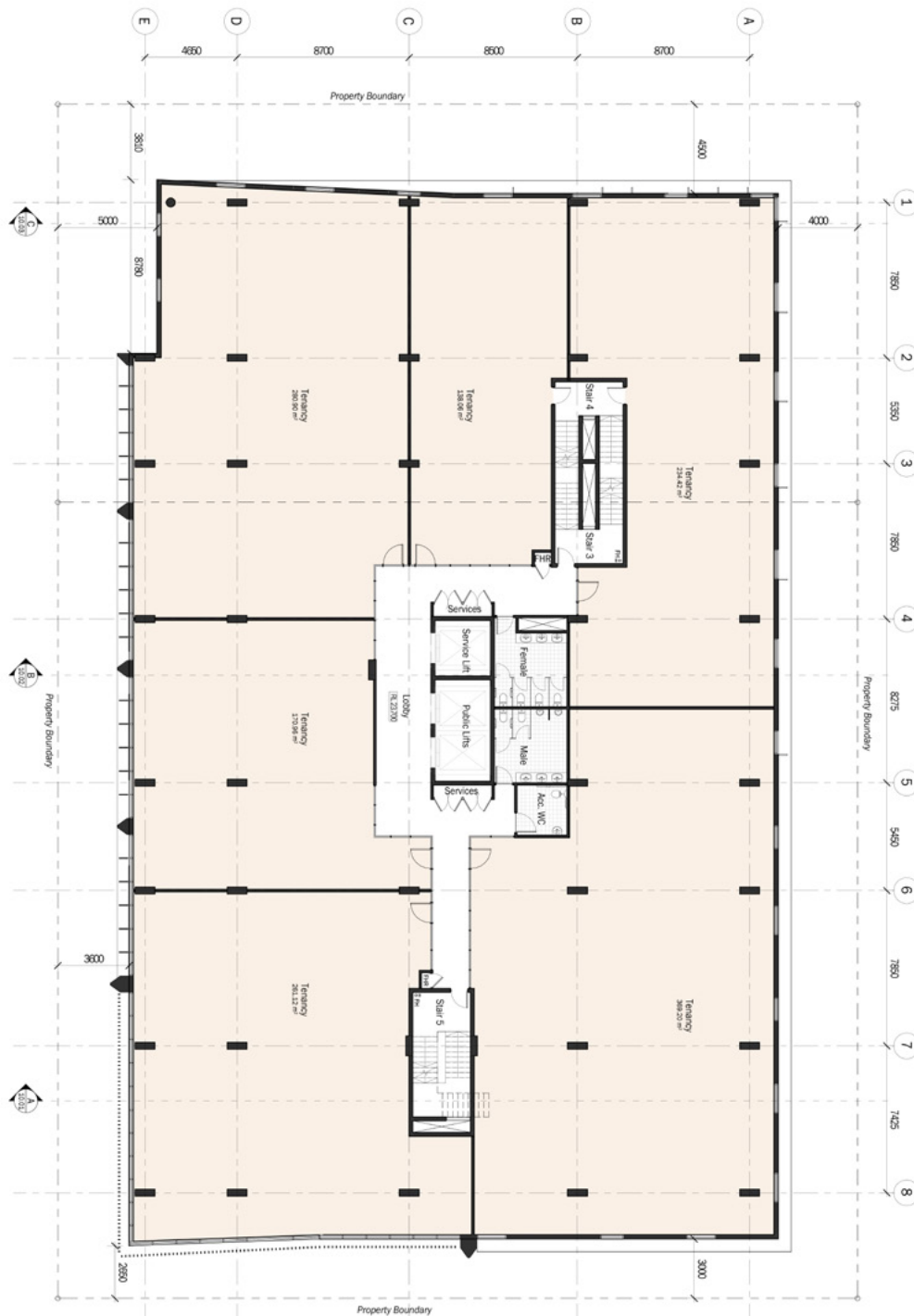
Not to Scale.
 All areas are indicative and subject to final survey.
 Internal layout drawings are indicative only and items shown are not included in the purchase.

Level Two



Not to Scale.
 All areas are indicative and subject to final survey.
 Internal layout drawings are indicative only and items shown are not included in the purchase.

Level Three

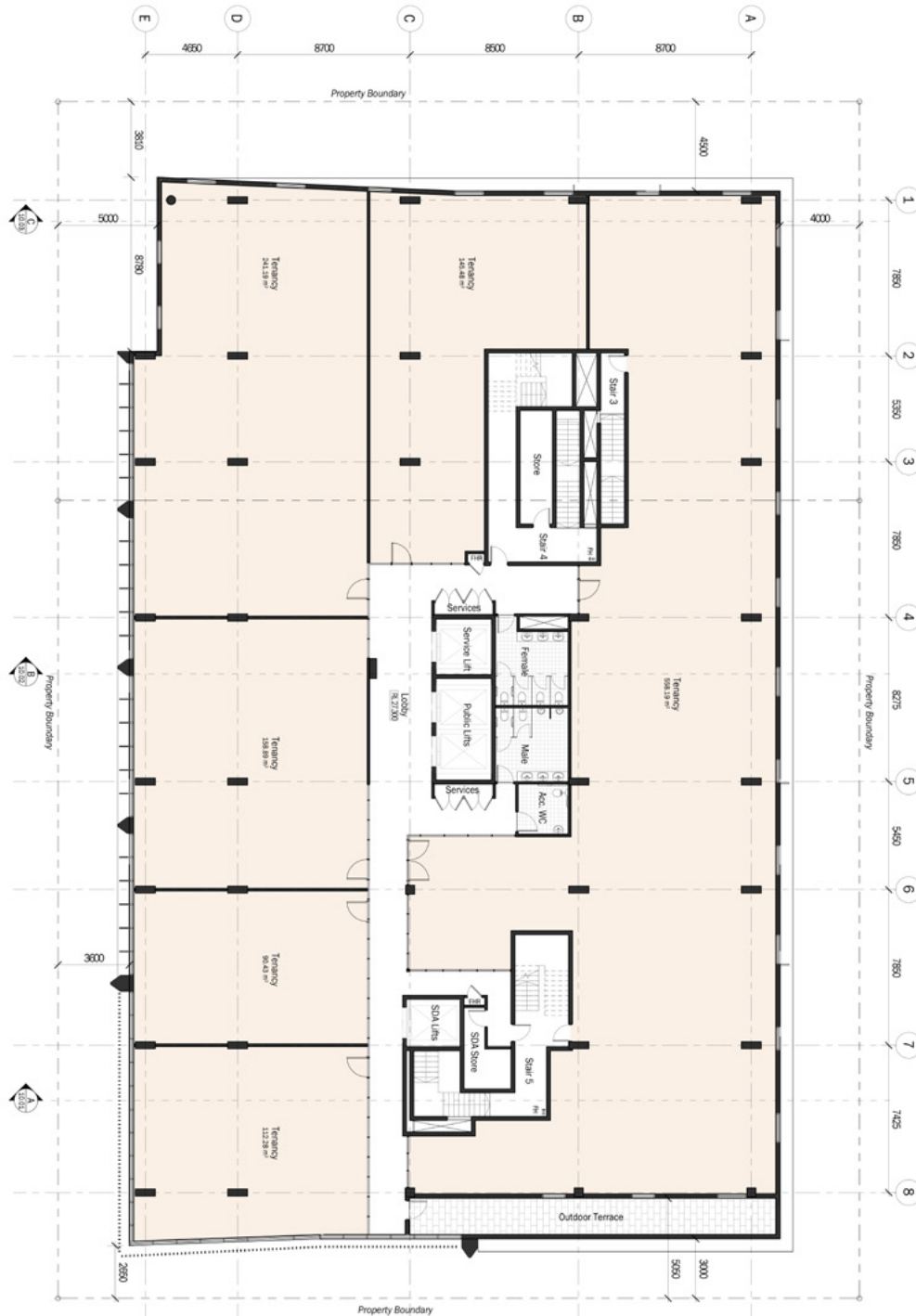


Not to Scale.

All areas are indicative and subject to final survey.
 Internal layout drawings are indicative only and items shown are not included in the purchase.



Level Four



Not to Scale.

All areas are indicative and subject to final survey.
 Internal layout drawings are indicative only and items shown are not included in the purchase.

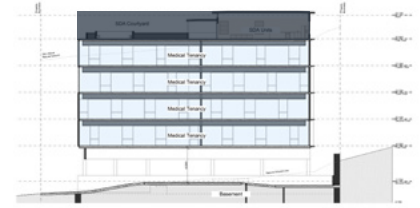


Rooftop Terrace



Not to Scale.
All areas are indicative and subject to final survey.
Internal layout drawings are indicative only and items shown are not included in the purchase.





Rooftop Terrace

In this age of well-being focused workplaces, the integration of green space is a progressive and impactful initiative. Regular exposure to green environments has been shown to enhance concentration, creativity, and productivity.

Features

- **Panoramic views**
- **Integrated green space**
- **Seating designed for your comfort and relaxation**
- **Focused well-being space for your health and wellness**



Your Practice. Your Way.

We offer a unique end-to-end service that delivers options for turnkey fit-outs: an experience rarely observed in the property and healthcare industries.

We specialise in health and medical projects, including detailed fit-outs that meet the needs of health professionals. With a wealth of experience in the healthcare sector, we are able to offer solutions to our clients as they begin their Health Hub journey.

Services

- Interior design
- Project management
- Layout flow
- Furniture & fitting
- Acoustic design
- Compliance & safety





Gosford
Health Hub

Sales & Leasing
Options Available



Daniel Price
0431 581 071



Avril Meiklejohn
0419 125 808



Elyse Hardy
0423 210 916

www.healthhubs.com.au