



221 Beaufort St, Perth & 46 Lindsay St, Perth

Summary

Two street frontage	
Land Area	1032m ²
Zoning	Commercial
Frontage	13.48m - 221 Beaufort Street, Perth 13.38m - 46 Lindsay Street, Perth
Total Depth	76.74m
Height Limit	Five (5) Story
Holding Income	\$20,000 P.A (estimate)

Concept Plans show

- Short stay accomodation
- 80 bedsits
- Common Facilities
- Student accomodation
- Pool
- Retail outlet
- concept plan



churchillknight.com.au



Ivor Cohen



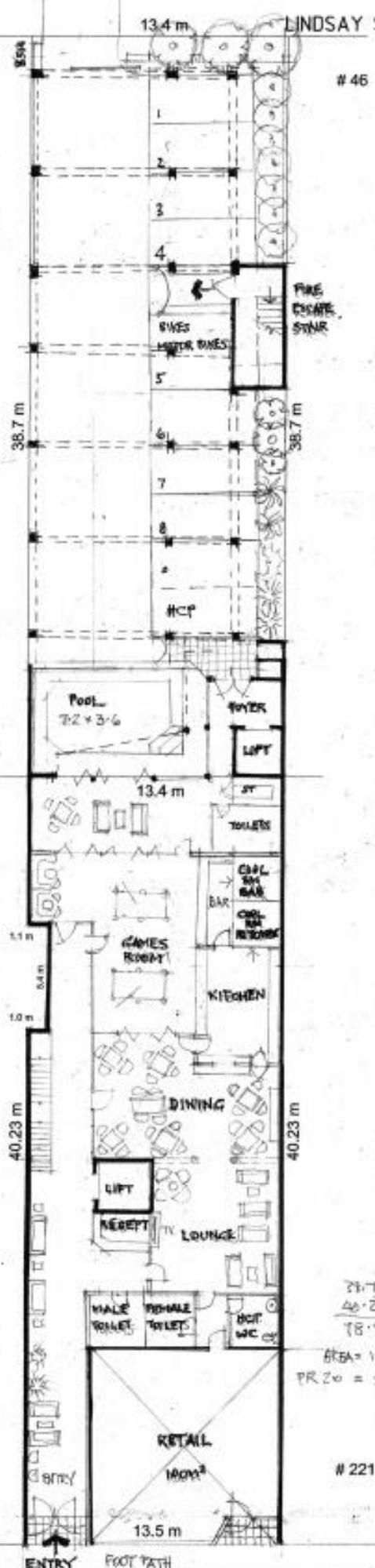
0418 923 652



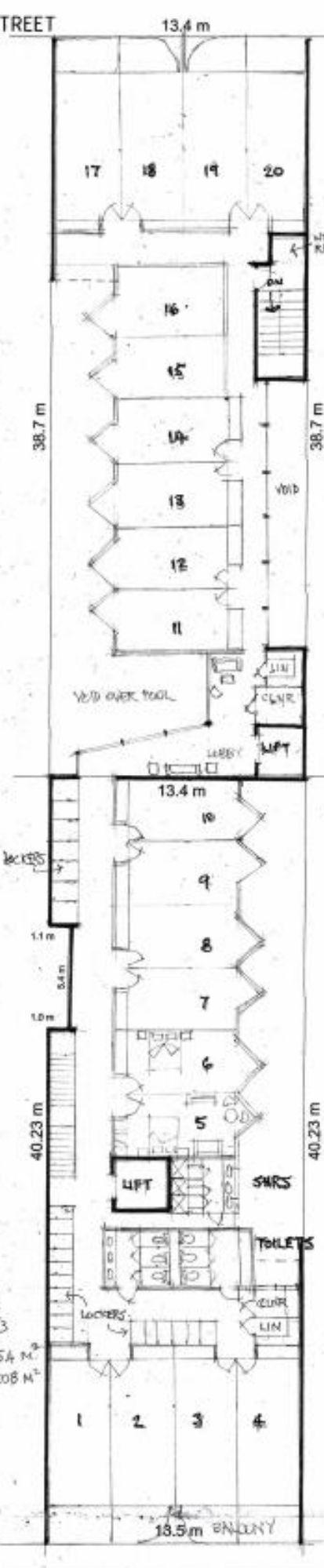
ck@churchillknight.com.au



9, 154 Hampden, Road
Nedlands WA 6009



221 BEAUFORT STREET
GROUND FLOOR



221 BEAUFORT STREET
FIRST - FOURTH FLOOR

ZONED COMMERCIAL
5 STOREY HEIGHT LIMIT
ACTIVITY BUILD FORM POLICY 7-1-1
BACK PACKER D.K.
SHORT STAY ACCOM. POLICY
FLAT RATIO - PAC 3 PR 2
TREAT SET BACK - NIL
SIDE - - R CODE TABLE 2-1

CITY STRUCTURE PLANNING
• MITCHEL HOAD SURPLANNER
• KARSON REYNOLDS ARCHITECT

20 ROOMS PER FLOOR
4 FLOORS = 80 ROOMS

29.7
40.23
78.93
AREA = 1054 M²
PR 20 = 2108 M²

LAND AREA
78.93 x 13.5 = 1054 M²
FLAT RATIO 2 x 2108 M²

221 BEAUFORT STREET
NORTHBRIDGE

John L. Silbert & Associates 1999/2020
Architect
36 Parliament Place West Perth
SK1