

+ MAKING SPACE FOR GREATNESS

Goodman

# SPACE FOR ECONOMIES OF SCALE



Seven Hills Industrial Estate  
17 Stanton Road,  
Seven Hills, NSW

# Flexible spaces



Seven Hills Industrial Estate is a well presented estate with quality warehouse and office units.

The estate boasts close proximity to the M2 and M7 Motorways, providing transport efficiencies for users.



Situated in the industrial hub of Seven Hills, the estate is located within 2.5 kilometres of the M2 and M7 Motorways. Users also benefit from convenient access to public transport and a range services and amenities located only 2.4 kilometres away at the Seven Hills Plaza.

# CENTRAL CONNECTION

---

**600M**

to bus stop

---

**2.2KM**

to Seven Hills station

---

**2.4KM**

to Seven Hills Plaza

---

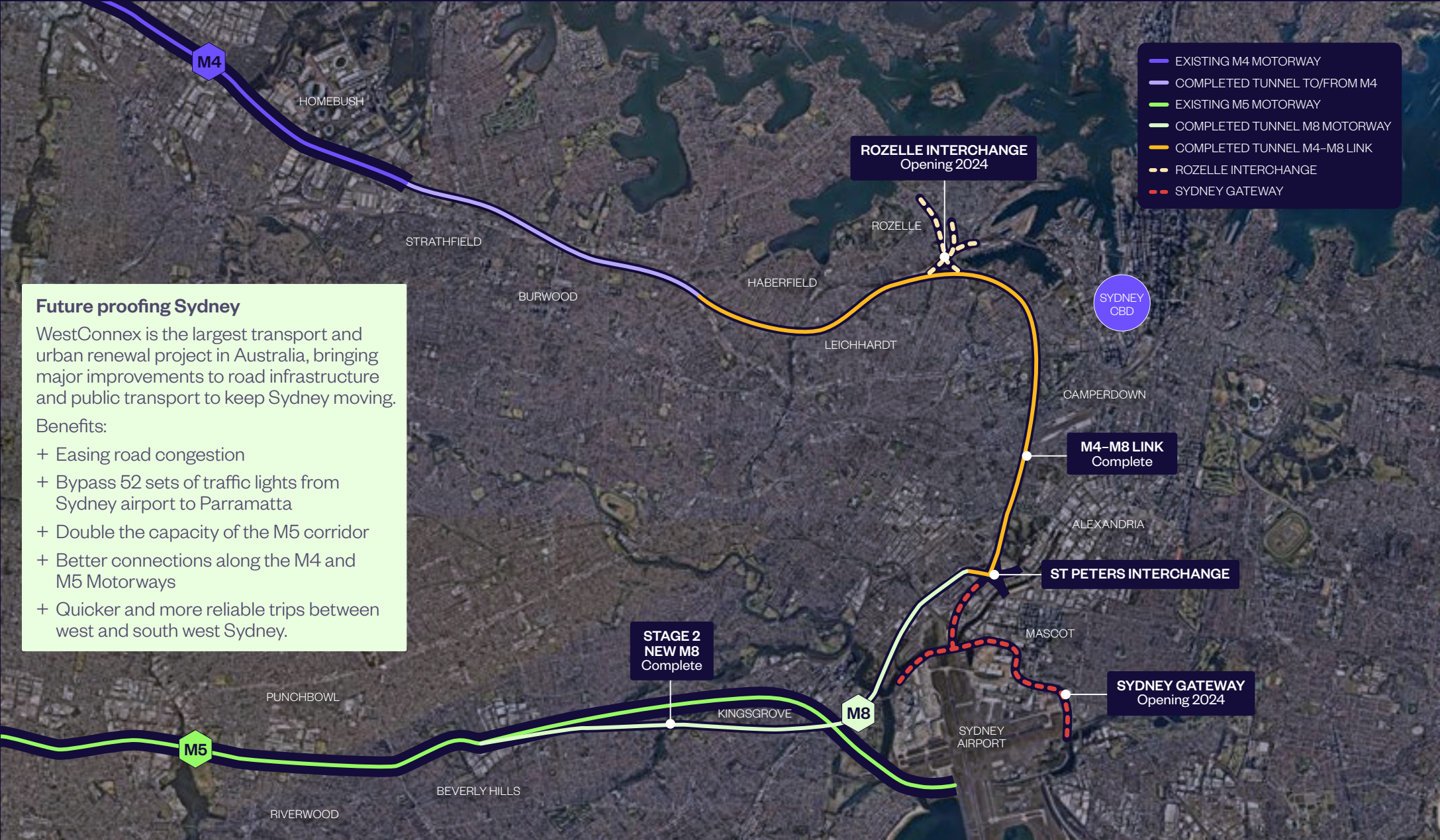
**2.5KM**

to M7 Motorway

---

**Easy  
access**

# WESTCONNEX – IMPROVING ACCESS




### Future proofing Sydney

WestConnex is the largest transport and urban renewal project in Australia, bringing major improvements to road infrastructure and public transport to keep Sydney moving.

#### Benefits:

- + Easing road congestion
- + Bypass 52 sets of traffic lights from Sydney airport to Parramatta
- + Double the capacity of the M5 corridor
- + Better connections along the M4 and M5 Motorways
- + Quicker and more reliable trips between west and south west Sydney.

## Key area statistics

 **3.9m**  
TOTAL POPULATION


 **1.3m**  
TOTAL HOUSEHOLDS

 **\$231.7bn**  
TOTAL PURCHASING POWER

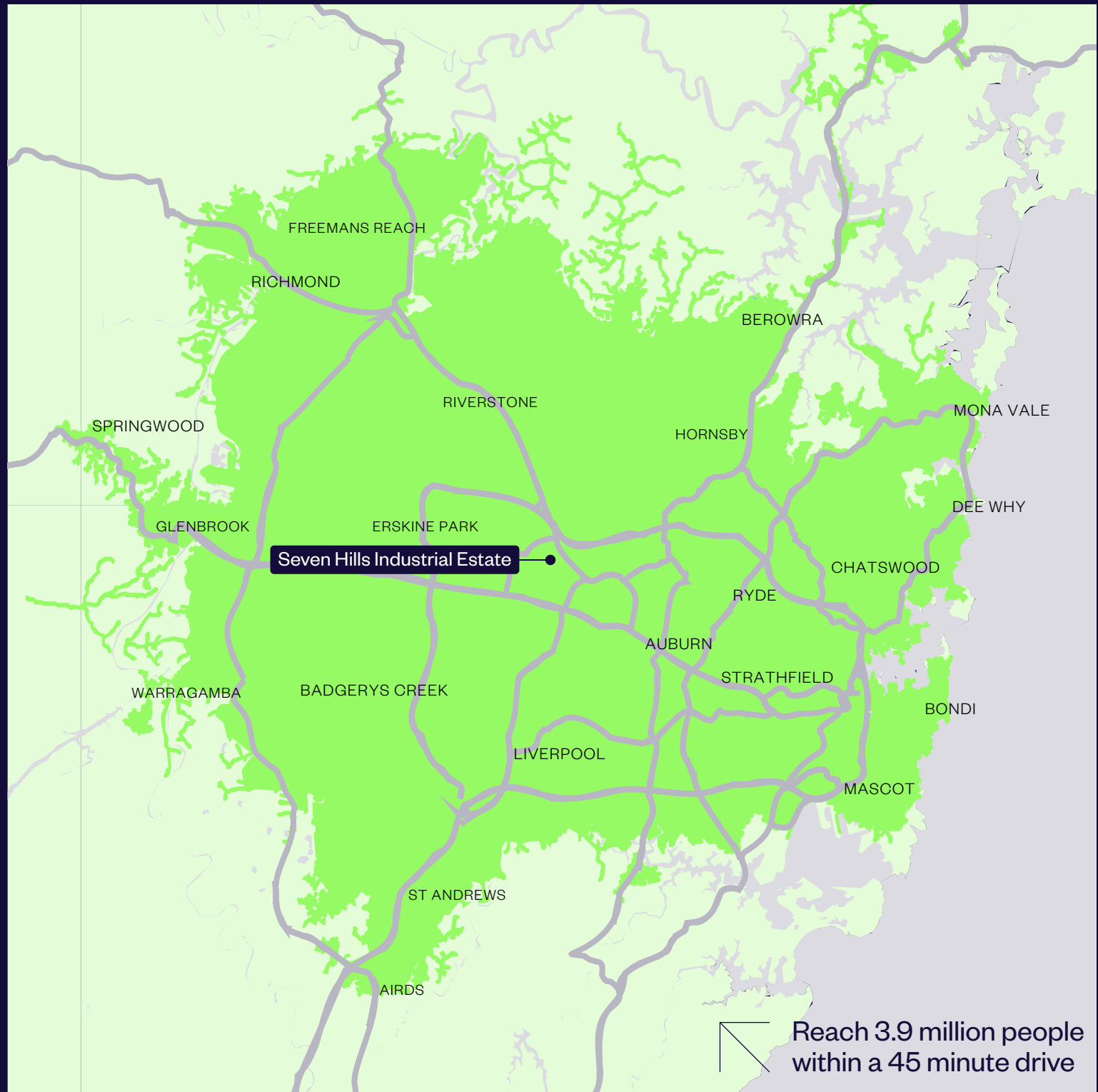
## Total spend on

 **\$6.1bn**  
CLOTHING

 **\$19.9bn**  
FOOD + BEVERAGE

 **\$4.8bn**  
PERSONAL CARE

 **\$1.3bn**  
ONLINE SHOPPING



Source: Esri and Michael Bauer Research

 Reach 3.9 million people  
within a 45 minute drive

**WITHIN  
45 MINUTE  
DRIVE TIME**

# AERIAL



Seven Hills Industrial Estate

Unit 2

Stanton Road

# MASTERPLAN

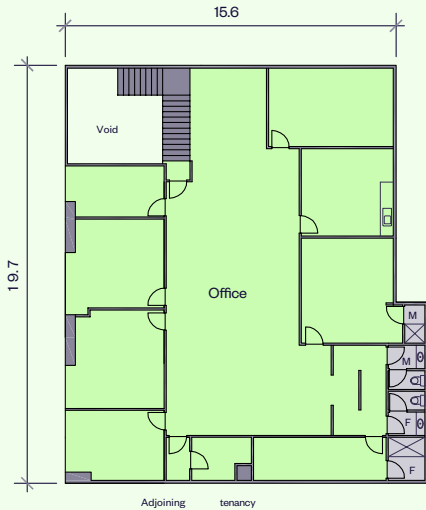


■ FOR LEASE

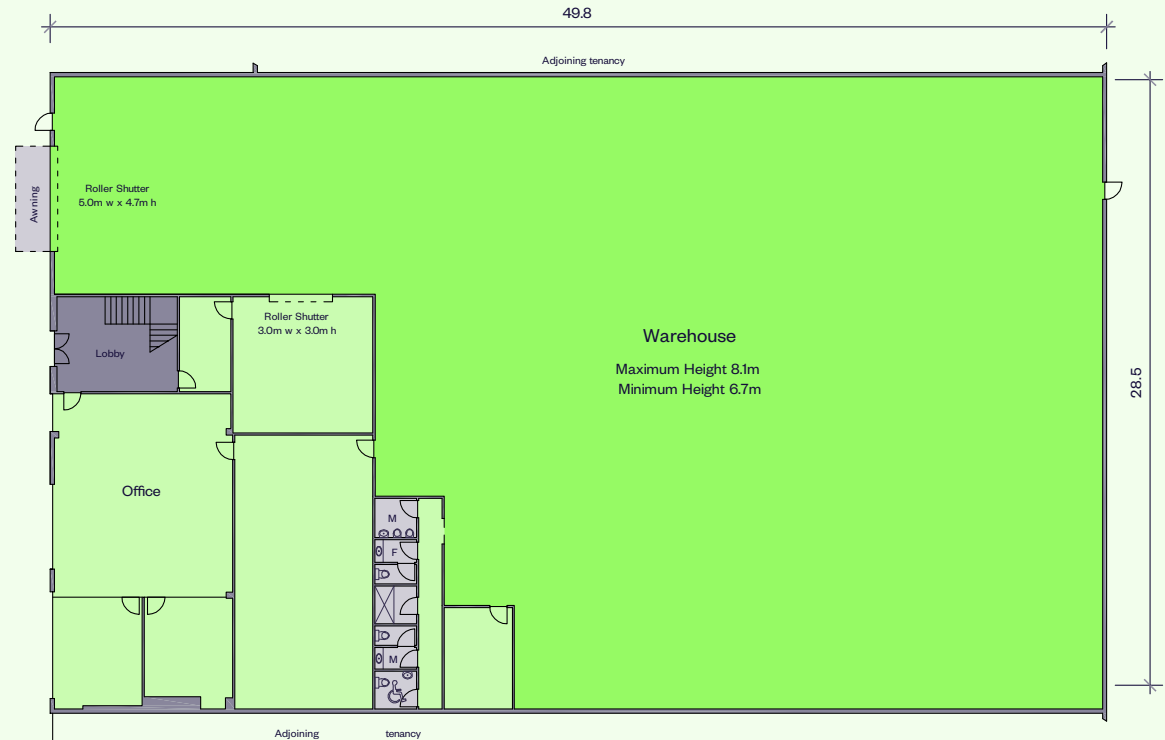


# UNIT 2 PLAN

AREA SCHEDULE	SQM
Ground floor	
Warehouse	1,154.2
Office	350.0
Level 1	
Office	300.6
<b>Total building area</b>	<b>1,804.8</b>



First floor



Ground floor



# FEATURES



- + 1,185 sqm warehouse with internal clearance up to 8.1m
- + Office and amenities from 620 sqm
- + Access via on-grade roller shutters
- + Well maintained estate
- + Range of food, fashion and services available at the nearby Seven Hills Plaza.



Our teams provide progressive insights to business needs in an ever-changing world



# SERVICE

### Customer focus

Dedicated Building Managers provide on-site support for day-to-day operations, while Property and Asset Managers are available to discuss leasing, administration or modifications to tenancies.

### Presentation

Our property services teams attend to your operational needs and provide unparalleled maintenance and presentation standards.

# Sustainability



We aim to be leaders in environment, social and governance – with a long-term, sustainable approach that leads to positive economic, environmental and social outcomes for our business, our stakeholders and the world more broadly.

Here's a snapshot of some of our initiatives across our Australian portfolio.

## Procurement

To ensure the products and services we purchase don't harm people or the planet, we're working step-by-step with our suppliers and contractors. On the horizon are clear targets and minimum expectations for our supply chain partners. But for now, we are working together to set a baseline and understand obstacles and opportunities.



## Climate resilience

Goodman has several control measures in place to futureproof our portfolio, keep our customers safe, and mitigate against the risks of climate change. These measures include inspections of structure and façade, roof audits, landscape maintenance and potable water monitoring.

## Solar

We have installed over 24MW of rooftop solar on approximately 170 of our properties in Australia. That's more than 60,000 solar panels – enough to power 6,000 homes, or the equivalent of taking 15,800 passenger vehicles off the road.

## LED lighting + motion sensors

100% of the portfolio will have LED lighting and motion sensors installed by end June 2024. This will reduce energy consumption and provide optimum lighting comfort for our customers

## Smart meters

Smart meters help to manage electricity consumption by providing regular data related to interval electricity usage.

## Electric vehicle future

Goodman recognises our role in preparing our estates and our customers for an EV future. We're supporting the switch to EVs by building a green fleet, encouraging our people to purchase EVs, providing dedicated EV bays and charge points at all new developments, and collaborating with our customers.

## Sustainable landscaping

- + We have installed tanks to harvest rainwater
- + Our properties use smart water metering that allows easy access to irrigation programs via a smart device, such as a mobile phone
- + From December 2022 all handheld equipment used in landscaping and cleaning work at our properties will be battery operated



- + We use drought tolerant plants combined with ballast rock
- + A green waste recycling pilot project on several of our properties processed an estimated 500 cubic metres of green waste in just six months. The trial was so successful that we will roll out green waste recycling across all of our properties in November 2022
- + At Eastern Creek in NSW, we have constructed a fully sustainable garden comprising 23 edible garden beds with stingless native bees, compost, worm farm and permaculture practices
- + We have been trialling a new steam weed control which surpasses the chemical Glyphosate. We're working closely with the manufacturer to improve the efficacy and portability so we can use it more widely.

# INCLUSION AND DIVERSITY

Central to our purpose of “making space for greatness” is creating an environment where I&D is embedded into everything we do.

We work to create a culture where our people are valued and have the opportunity to realise their potential.

We are all accountable for making it a reality. Our people are champions of openness, fairness and respect.



 At Goodman, we lead the way in inclusion and diversity

# FIRST NATIONS ENGAGEMENT



We acknowledge the Aboriginal and Torres Strait Islander Traditional Custodians of the land on which we work and live. We pay respect to Elders past, present and emerging. We value their custodianship of over 65,000 years.



Artist Danielle Mate with her artwork created for Goodman's Reflect RAP.

As a business that works across many locations, we have a responsibility to listen, learn and walk alongside First Nations peoples to ensure our activities support the continuing of connection to their land, waters, cultures, languages and traditions.

Goodman received formal endorsement of our Reflect RAP. We have clear commitments around the core pillars of relationships, respect and opportunities.

Our RAP journey is ongoing, and we're determined to make a difference.

# GOODMAN FOUNDATION

The Goodman Foundation unites our people, properties and resources to make a tangible difference to the lives of people in our communities. Through our partnerships with an exceptional – and often grassroots – group of charities, we’re able to make a real difference, where and when it matters most.



Above: Clontarf Foundation  
Bottom L-R: Clontarf Foundation, Thread Together, Bestest Foundation

## How we do good in the world

The Goodman Foundation offers support to charities within three key areas:

**Children and youth**  
Charity organisations who help protect, nurture and support children or young people.

**Food rescue and environment**  
Charity organisations who reduce waste and support those in need by redistributing fresh food or useful items that would otherwise go to landfill.

**Community and community health**  
Charity organisations who support those living with a condition, illness or disability, or whose efforts help to create a more inclusive and equitable community.

LEARN MORE ABOUT THE GOODMAN FOUNDATION



# CONTACT



## GET IN TOUCH

Tracey Rom  
Senior Property Manager

T. 02 9230 7265  
M. 0439 249 359  
[tracey.rom@goodman.com](mailto:tracey.rom@goodman.com)

Jessica Wrate  
Portfolio Manager

T. 02 9230 7161  
M. 0414 930 422  
[jessica.wrate@goodman.com](mailto:jessica.wrate@goodman.com)

Goodman  
The Hayesbery  
1-11 Hayes Road  
Rosebery NSW 2018  
T. 02 9230 7400

[VIEW THIS PROPERTY ONLINE](#)

