





The Centre

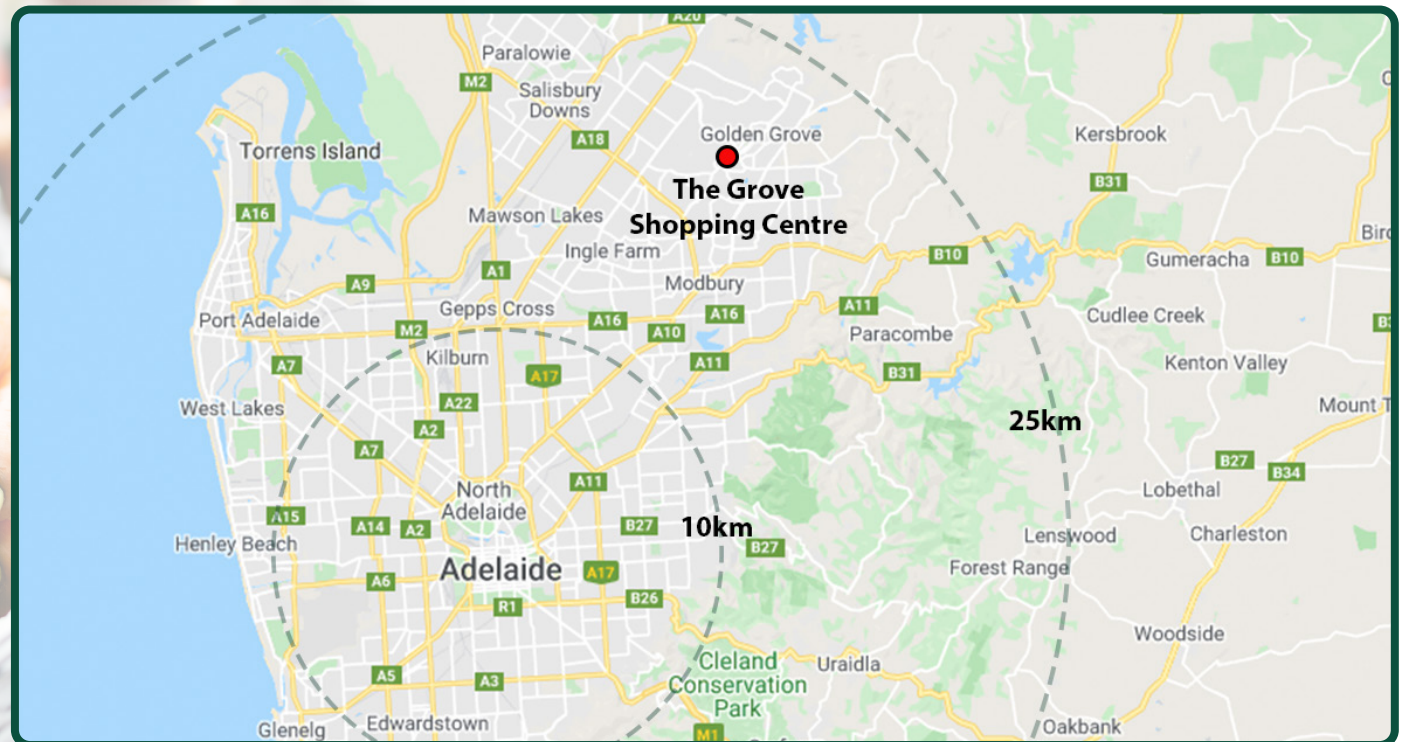
The Grove Shopping Centre is a sub-regional centre that provides a convenient and easily accessible shopping and services hub for a significant trade area.

Located in the leafy North-Eastern Adelaide suburb of Golden Grove, the centre services a strong, family oriented, residential community located approximately 22km from the CBD.

Upgrades to the centre in 2018 delivered a

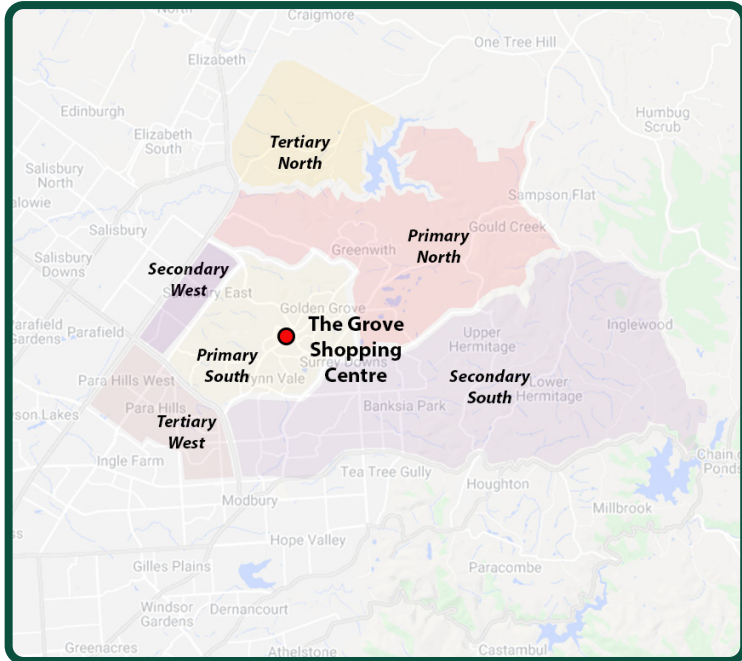
contemporary feel throughout with new dining experiences, alfresco family area and a focused fresh food precinct including Drakes Supermarket, Woolworths and Tony & Mark's. It has established itself as a popular meeting place and destination for all the neighbourhood's fresh food & grocery needs.

The Grove Shopping Centre's tenancy mix offers a diverse and complimentary range of services.

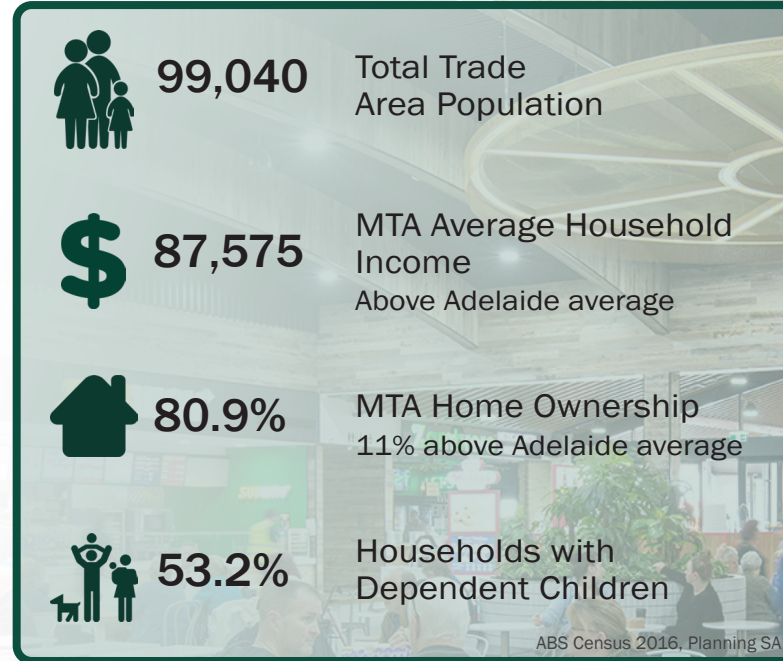


The Grove is a popular shopping centre in a main trade area dominated by households with young families.

Trade Area



Demographics



The Numbers



The Retail Offer

Anchored by 3 majors; Big W, Woolworths and Drakes Supermarket the centre is also home to Cotton On Mega, The Reject Shop, Tony & Mark's and First Choice Liquor.

Add in over 100 specialty tenancies that provide fashion, hospitality, and health & medical services - the centre truly provides the ideal destination for the daily and weekly needs of the surrounding communities.



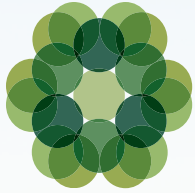
Centre Plan



Key

- ➔ Entry
- ♿ Toilets
- ♿ Parents Room
- ♿ Disabled Toilets
- ATM Automatic Teller Machine
- P Parking
- 🚏 Bus Stop
- Major Tenancy
- Mini Major Tenancy
- Specialty Tenancy
- Pad Site

| Tenancies | | | | | | | | | | | |
|-----------|----------------------|-----|----------------------------------|-----|-----------------------|-----------|--|-------|-------------------------|--|--|
| 1 | Woolworths | 23 | W.Lane | 39 | Bangkok Kitchen | 70 | All Around Body Tuner | FC01 | Sakura | | |
| 88 | BIG W | 24 | Haigh's Chocolates | 40 | Commonwealth Bank | 74 | National Pharmacies | FC02 | Soonta | | |
| 89 | Drakes Supermarket | 25 | Vacant Store | 41 | Salvation Army | 75 | The Good Feet Store | FC03 | Baba's Yiros & Spuds | | |
| MM01 | Tony & Mark's | 26 | Figaro Hair & Beauty | 42 | Straight Smile | 75A | Forbici Styles | FC04 | Caffe Primo | | |
| MM02 | Priceline Pharmacy | 26A | Essential Beauty | 43 | Vacant Store | 76 | EB Games | FC05 | Zambreno | | |
| MM03 | Cotton On Mega | 28 | The Grove Newsagency | 45 | Coffee & Co. | 79 | Vacant Store | FC06 | Subway | | |
| 71 | The Reject Shop | 28A | Smart Hearing Solutions | 47B | Boost Juice | 80 | Sportsgirl | FC07 | Muffin Break | | |
| 77 | Sportspower | 27 | Rockmans | 49 | OPSM | 81 | The Optical Superstore | FS001 | First Choice Liquor | | |
| 3A | Vacant Store | 29 | Vacant Store | 50A | Angelakis Bros | 82A | Zitto | FS002 | Prices Fresh | | |
| 5 | Telstra | 29A | Blazed The Barber Lounge | 50B | Barossa Fine Foods | 82B | The Cheesecake Shop | FS003 | Woolworths Petrol Plus | | |
| 5A | Optus | 30 | Golden Grove Village Dental Care | 58B | Zee's | 82C | Pop Phones | FS004 | Bridgestone Select | | |
| 6A | Professionail | 31 | IMVS / SA Pathology | 59 | Strandbags | 83 | Ally Fashion | FS005 | Ultra Tune | | |
| 6B | Vacant Store | 32 | Hearing Life / Audika | 59A | Golden Fish & Chicken | 84 | Thrive Mens & Womens Clothing | FS006 | Mycar Tyre & Auto | | |
| 7A | Vodafone | 33 | Bank SA | 60 | Spendless Shoes | 85 | Suzanne Grae | FS007 | Prowash Car Wash | | |
| 7B | Village Flowers | 34 | Smith Partners Real Estate | 61A | D & S Quality Meats | 1001 | DPTI | FS008 | Sprint Auto Parts | | |
| 8 | Prouds The Jewellers | 34A | Aussie | 61B | Home Fresh Experience | 1001A | Atwork Australia | FS009 | Sparkle & Shine Carwash | | |
| 9 | Bryces Bakery | 35 | Barnacle Bills | 62 | Sarafina Boutique | 1002/1004 | Vacant Store | K1 | Threads N Brows | | |
| 17 | Pets Best | 35A | Dominio's Pizza | 62B | Lotus Hair | 1003 | Village Physiotherapy & Sports Injury Clinic | K5 | In Case Mobile Repairs | | |
| 19 | Flight Centre | 37A | Cadence Pilates | 63 | Jeanswest | 1005 | Specialist Eye | K8 | Vacant Store | | |
| 20 | Smokemart | 37B | Karl Chahade Dry Cleaners | 64 | Millers | 1007 | Feet First Podiatry | K9 | Mister Minit | | |
| 21 | Chi Body Spirit | 37C | Chatime | 65 | Sussan | 1009 | Spinecare Chiropractic | K11 | Sushi Hub | | |
| 21A | SA Luxury Nails | 38 | Kids Sense | 68 | Shiels Jewellers | 1010 | Centre Management | K12 | Wendy's | | |
| 22 | Post Office | 38A | H&R Block | 69 | Interior Motif | 1011 | Carolyn Cole Speech Pathology | K13 | Momentea | | |



THE GROVE

SHOPPING CENTRE

FOR LEASING OPPORTUNITIES CONTACT

Ben Laycock

on

T: 0412 175 454

E: ben.laycock@colliers.com

or

Michelle Burgess

on

T: 0401 946 123

E: michelle.burgess@colliers.com

CIP Asset Management (CIPAM) does not give any warranty in relation to the accuracy of the information contained in this document. If you intend to rely upon the information contained herein, you must take note that the information, figures and projections have been provided by various sources and have not been verified by us. We have no belief one way or the other in relation to the accuracy of such information, figures and projections. CIPAM will not be liable for any loss or damage resulting from any statement, figure, calculation or any other information that you may rely upon that is contained in the material.

