

Space for:

high expectations

**POWER PARK INDUSTRIAL ESTATE**  
27 ENDEAVOUR COURT, DANDENONG SOUTH, VIC

# Opportunity

Prelease opportunity available at Power Park Industrial Estate, located in South-East Melbourne's core industrial market of Dandenong South.

This is the location of choice for businesses including Remedy Drinks, Ball and Doggett, Bunzl, ITW Proline and Rondo Building Supplies.

Our sustainably designed, energy-efficient and professionally managed properties are strategically located and designed to meet the business needs of our customers. 27 Endeavour Court Development is targeting 5 Star Green Star Building certification and will incorporate solar, water saving initiatives, LED lighting and light sensors and native landscaping.



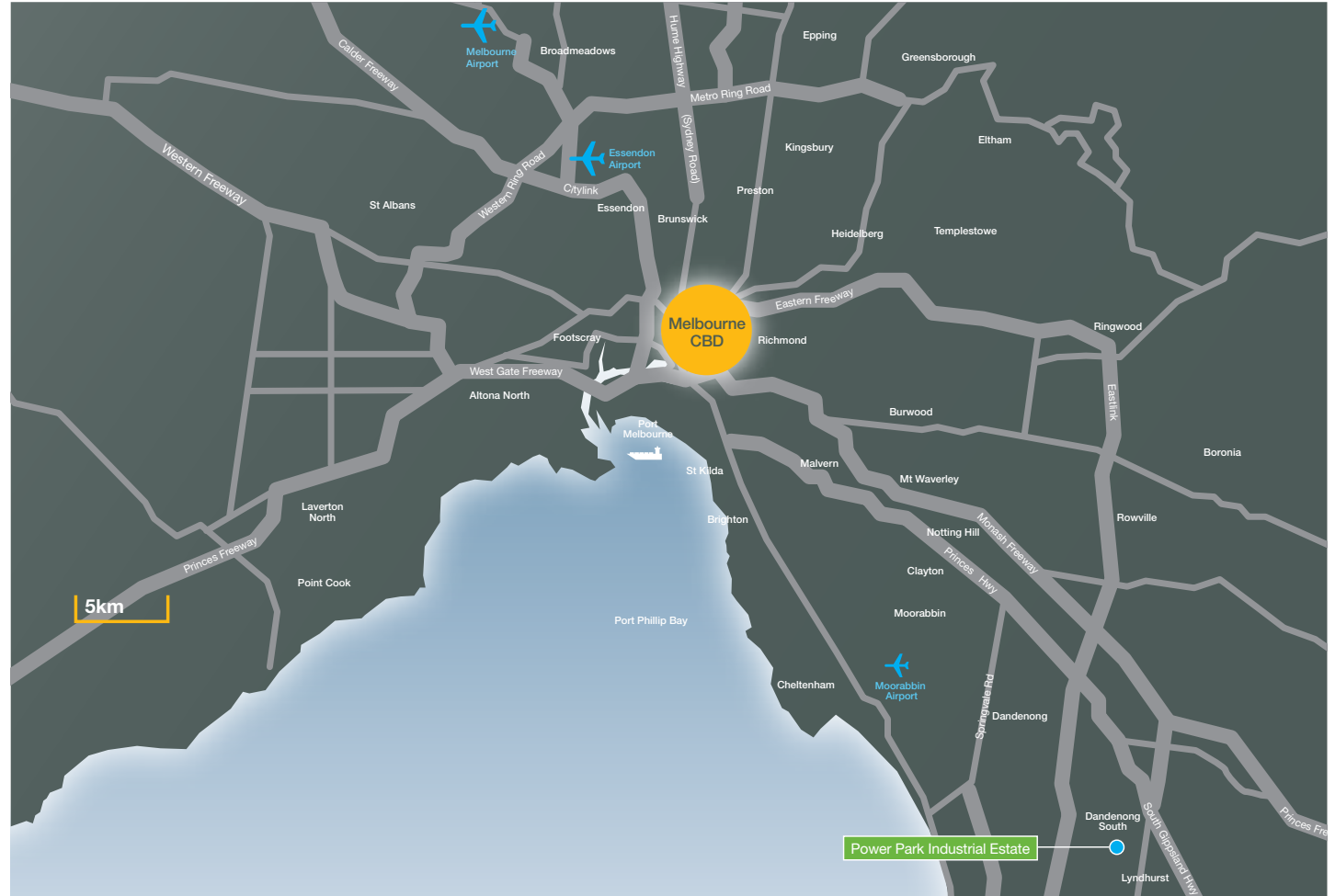


Artist's impression

# Smart move

Power Park Industrial Estate is located in Dandenong South, a prime industrial location approximately 35 kilometres south east of Melbourne CBD and is within the local government area administered by Greater Dandenong City Council.

The property is approximately 1.5 kilometres to Frankston-Dandenong Road which in turn provides options for freeway access to the north via Eastlink or the Western Port Highway.



## CENTRALLY CONNECTED



**1.5KM**  
to Western  
Port Highway



**2KM**  
to Frankston-  
Dandenong  
Road



**4.5KM**  
to Eastlink



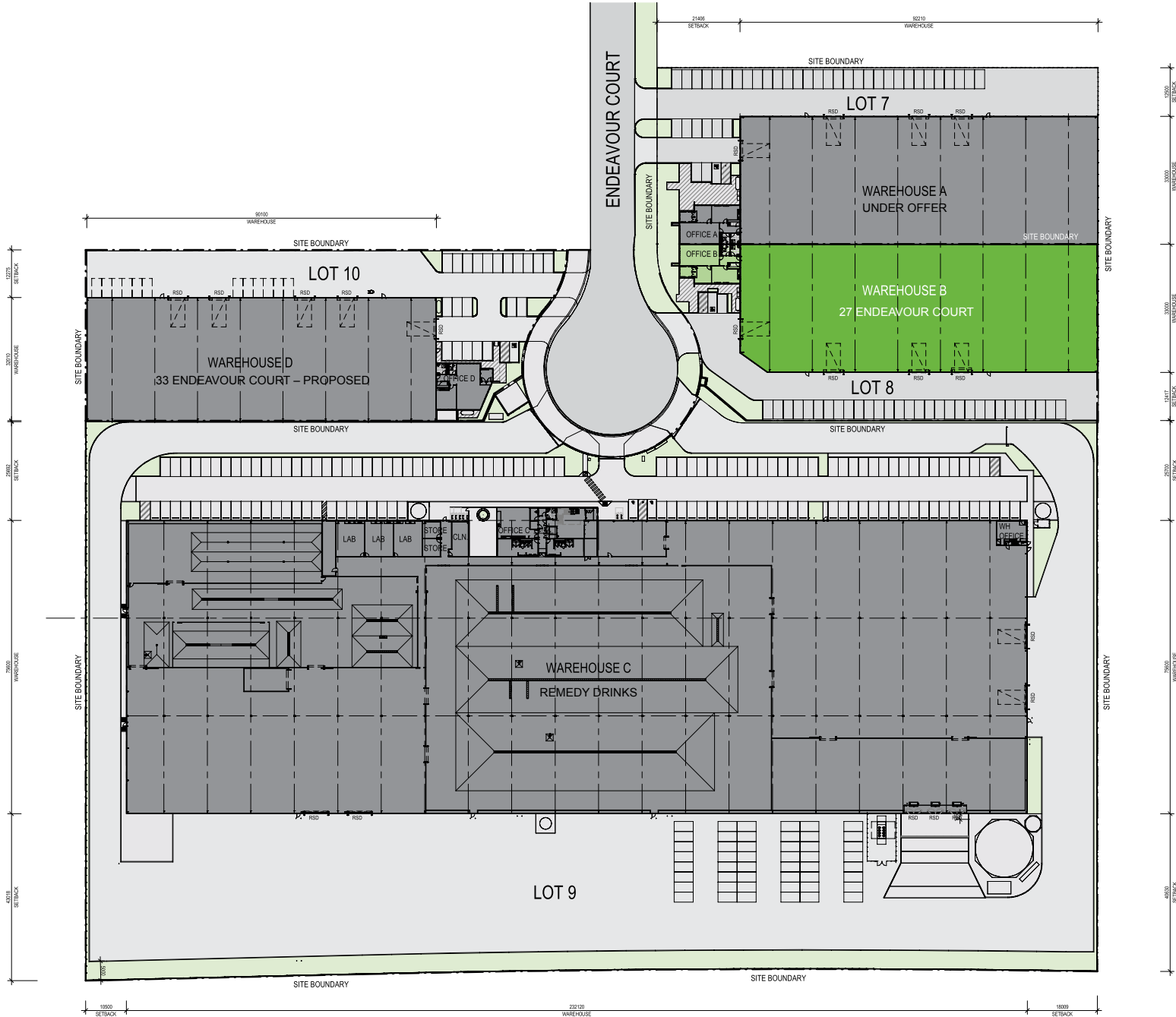


## Flexible spaces

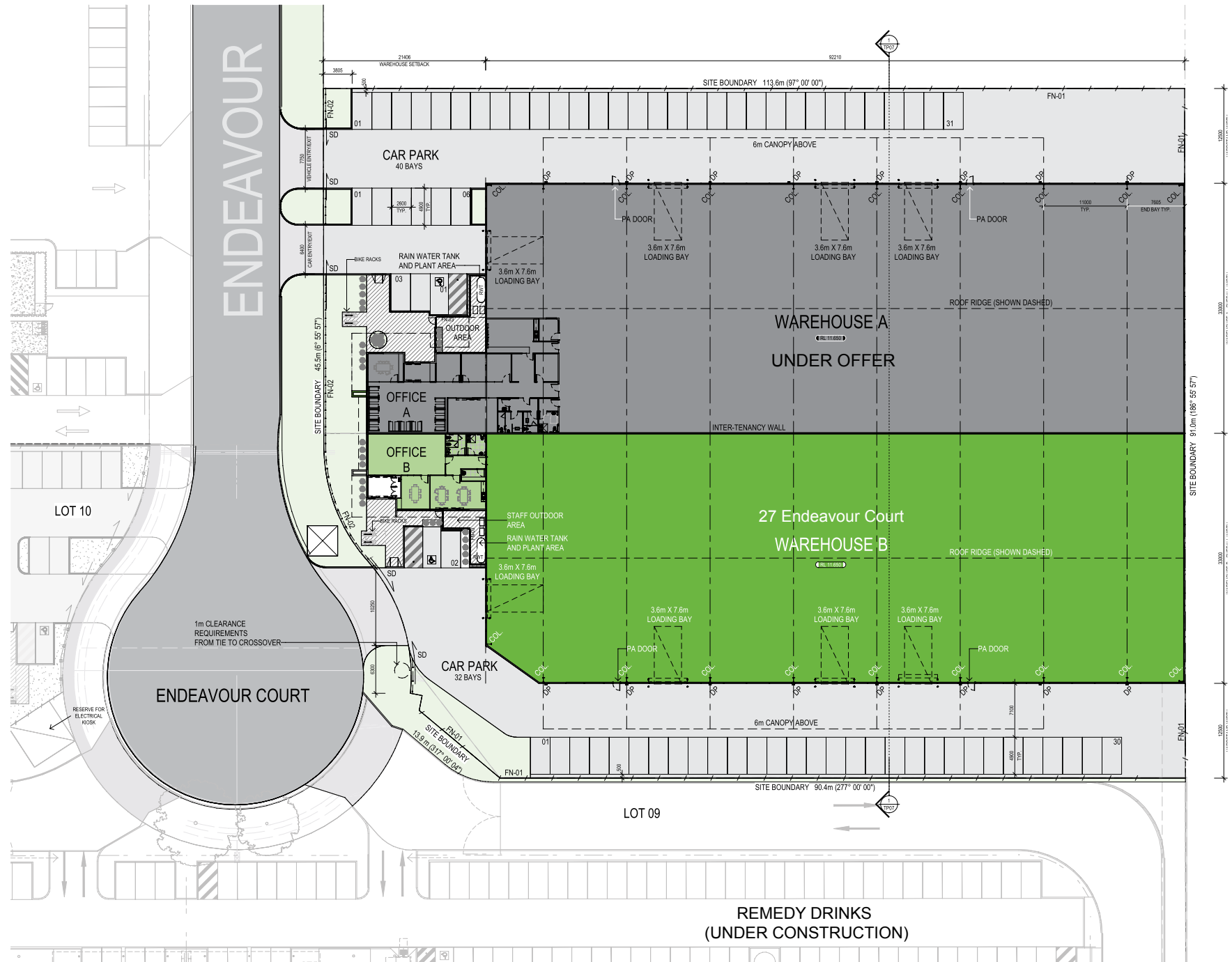
- + Brand new warehouse and office facilities
- + Targeting 5-star Green Star Green Building Council of Australia
- + 3,024 sqm cleanspan warehouse
- + 155 sqm modern office space
- + 4 loading bays
- + Awning for all-weather loading
- + ESFR sprinklers
- + 32 car spaces
- + 30kW solar array system
- + Carbon neutral via offsets
- + LED lighting and controls to the office and warehouse.



Artist's impression

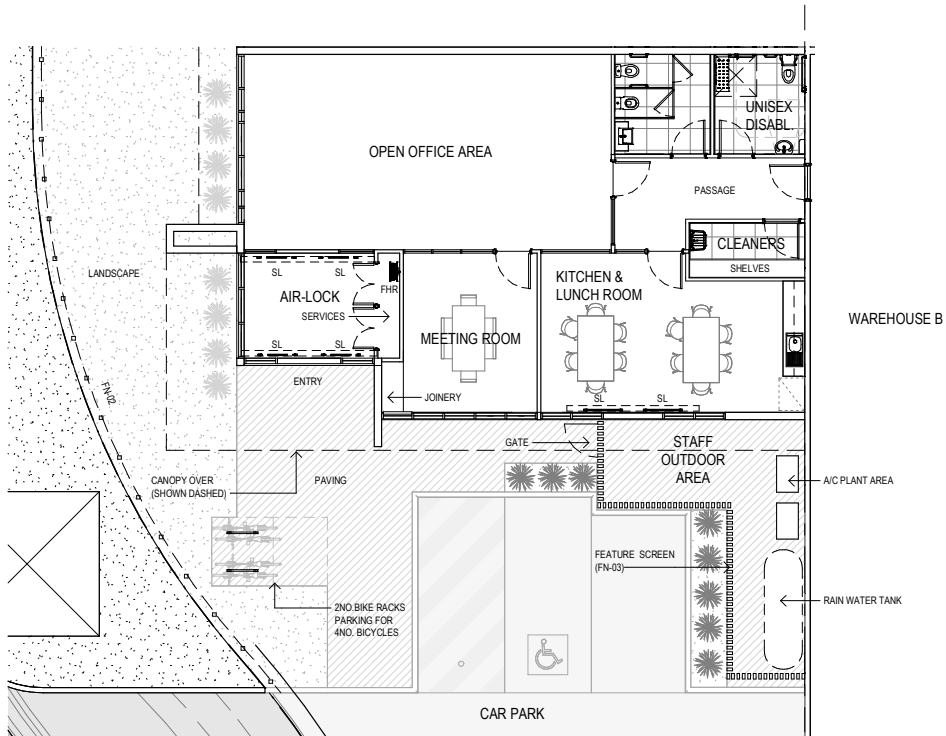






■ FOR LEASE

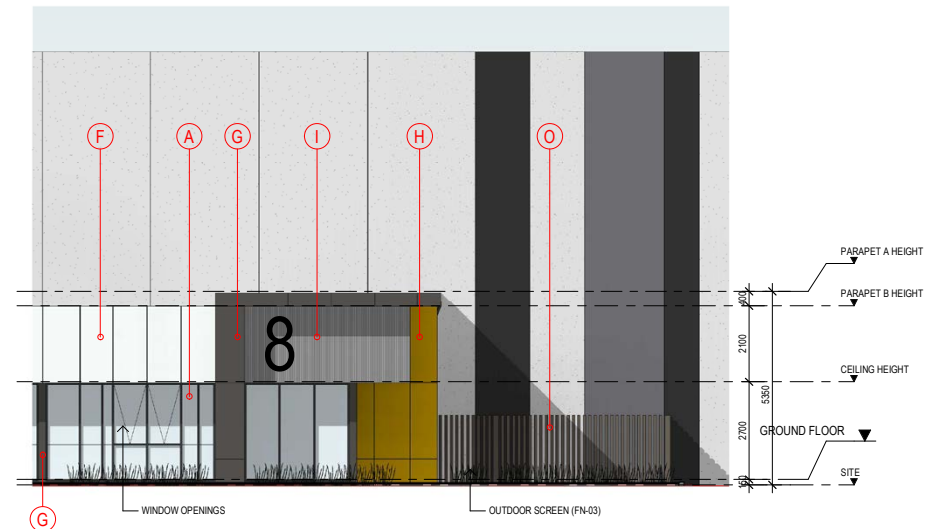
REMEDY DRINKS  
(UNDER CONSTRUCTION)



OFFICE B - GROUND FLOOR PLAN  
SCALE: 1: 100



OFFICE B - SOUTH ELEVATION  
SCALE: 1: 100



OFFICE B - WEST ELEVATION  
SCALE: 1: 100

# Sustainability

We aim to be leaders in environmental social governance – with a long-term, sustainable approach that leads to positive economic, environmental and social outcomes for our business, our stakeholders and the world more broadly.

Here’s a snapshot of some of our initiatives:



## Solar

So far, we have now installed over 14MW of rooftop solar on almost 100 of our properties in Australia. That’s more than 40,000 solar panels generating approximately 19GWh of electricity annually – enough to power 3,400 homes, or the equivalent of taking 9,300 passenger vehicles off the road.



## LED lighting + light sensors

60–80% reduction in energy use with LED lighting.



## Smart meters

Smart meter systems helps to manage electricity consumption by providing regular data related to interval electricity usage.



## Electric vehicle charging

Goodman has started allocating dedicated car spaces for EV charging and fuel efficient vehicles.



## Water harvesting

Installation of tanks to harvest rain water.



## Smart irrigation

Smart water metering is a wireless based adjustment control system that allows easy access to irrigation programs at a property level via a smart device, such a mobile phone.



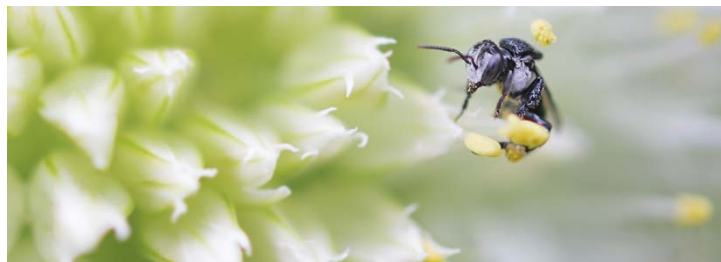


## Sustainable landscaping

- + **Sustainable landscaping design** – we have introduced drought tolerant plants combined with ballast rock.
- + **Battery equipment** – we are transitioning to battery handheld equipment with petrol powered handheld equipment to be phased out by the end of 2022.
- + **Green waste recycling** – trials have commenced for recycling greenwaste which will be re-used across our estates.
- + **Sydney/Taronga Zoo food supply** – we have commenced an agreement with Taronga to provide tree cuttings for food and habitat for animals.
- + **Sustainable garden** (Eastern Creek) – we have constructed a fully sustainable garden comprising 23 edible garden beds with stingless native bees, compost, worm farm and permacultural practices.



We believe in doing what is necessary for a better world and planet.



# Contact



## CBRE

### **Patrick Noone**

Negotiator

CBRE – Advisory & Transaction Services

Industrial & Logistics

**M** +61 439 250 578

patrick.noone@cbre.com.au

### **Ned Murphy**

Negotiator

CBRE – Advisory & Transaction Services

Industrial & Logistics

**M** +61 433 750 166

ned.murphy@cbre.com.au