

# Chermside Health Hub

Cnr. Gympie Rd & Rode Rd  
Chermside, Queensland  
Australia 4032



# Creating Thriving Health Hubs

We create accessible healthcare for everyone, creating a continuum of care through Primary and Specialist Health Hubs.

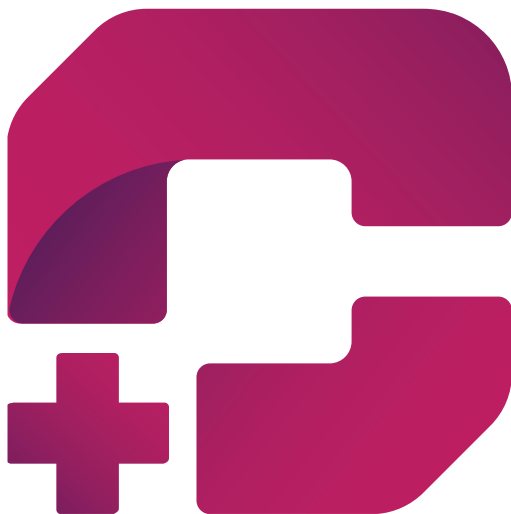
Designed to offer complimentary and supportive services, our Specialist Health Hubs are located within close proximity to both public and private hospitals.

The future of healthcare is integration and reimagining the patient experience. Our Health Hubs provide Specialists with direct opportunities

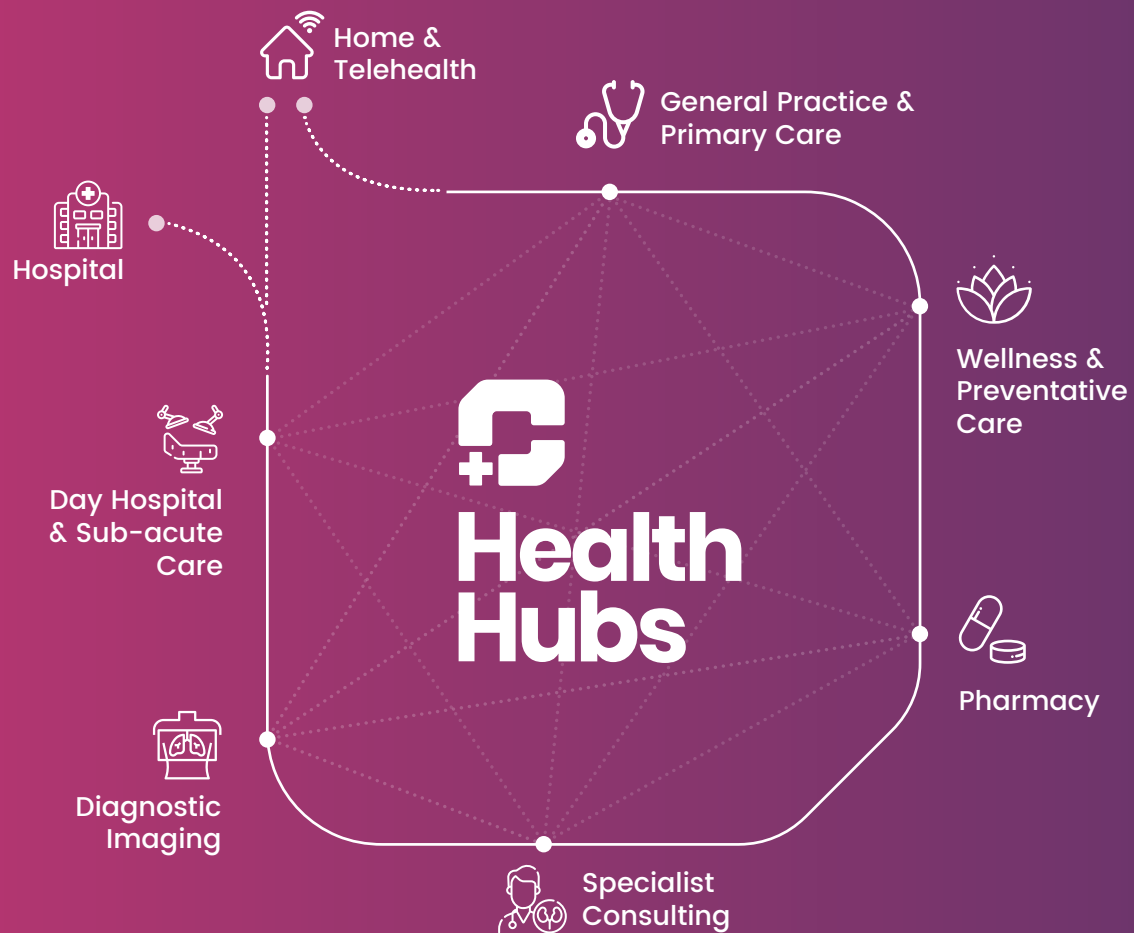
to make a meaningful impact on the local community.

Our passion for healthcare is people-focused and our desire to see communities thrive is ingrained in all that we do.

Opportunities are open for all medical professionals to be at the forefront of healthcare integration. Secure your space now in this state-of-the-art integrated Health Hub.



The future of healthcare is **integration** and reimagining the patient experience.



---

Every Australian community  
needs a thriving 'end to end'  
integrated health centre.

[www.healthhubs.com.au](http://www.healthhubs.com.au)





Join North Brisbane's newest  
integrated health centre delivering  
patient centred care.



Sales & Leasing Options Available

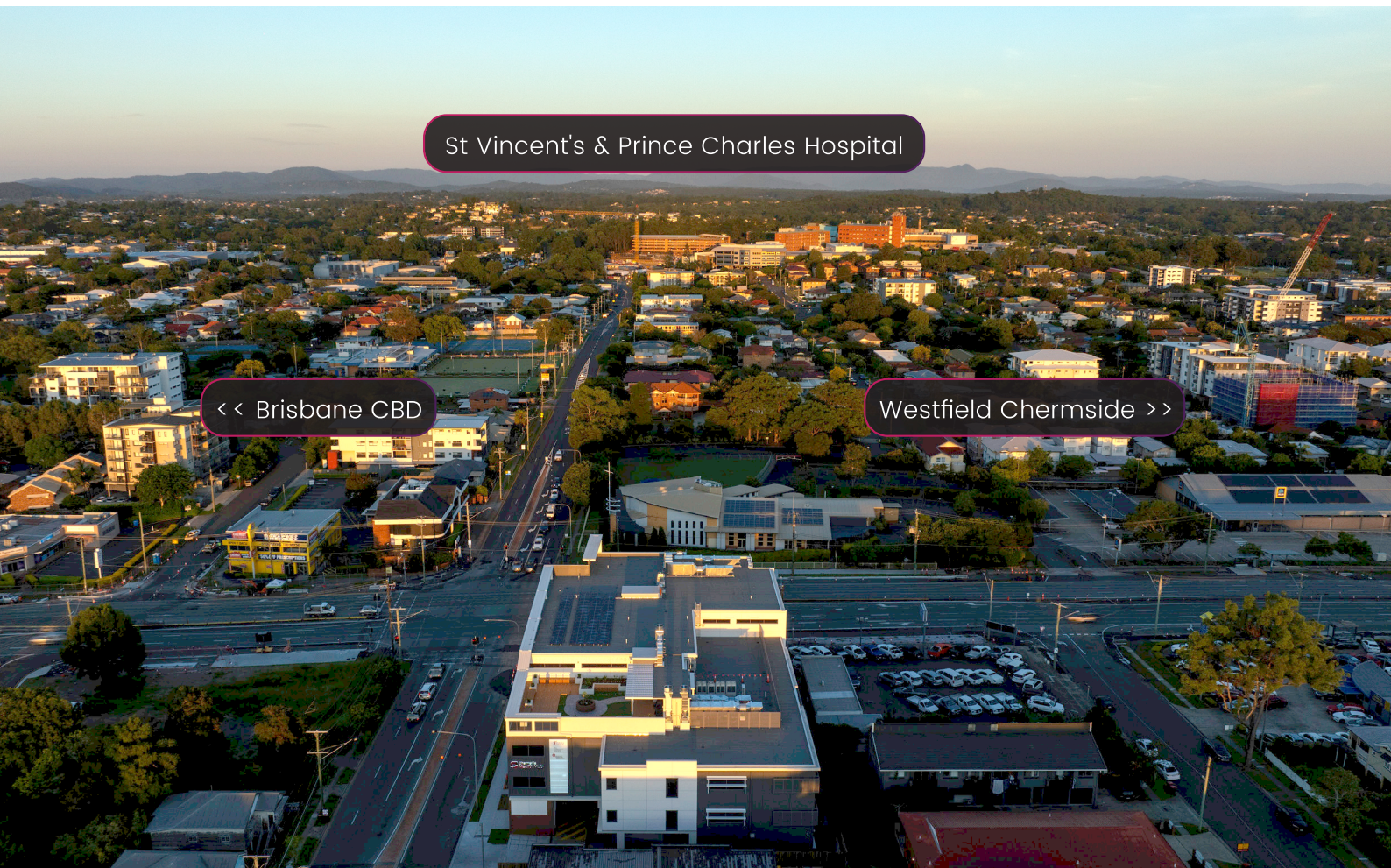


# Snapshot

Chermside Health Hub is within close proximity to two major hospitals and the expansive Westfield Chermside retail district. The Health Hub will transform healthcare accessibility for the local community. The centre is designed with ample patient parking and accessible public transport routes.

## Key Elements

- Purpose-built to facilitate collaborative patient-centred care
- High exposure site
- Medical class 9a building
- Accessible via public transport routes
- Abundant basement car parking
- Flexible tenancy, strata, and consulting suite options
- Integrated fit-out options, 'Your Practice. Your Way.'
- Prominent signage opportunities available



# The Future of Healthcare

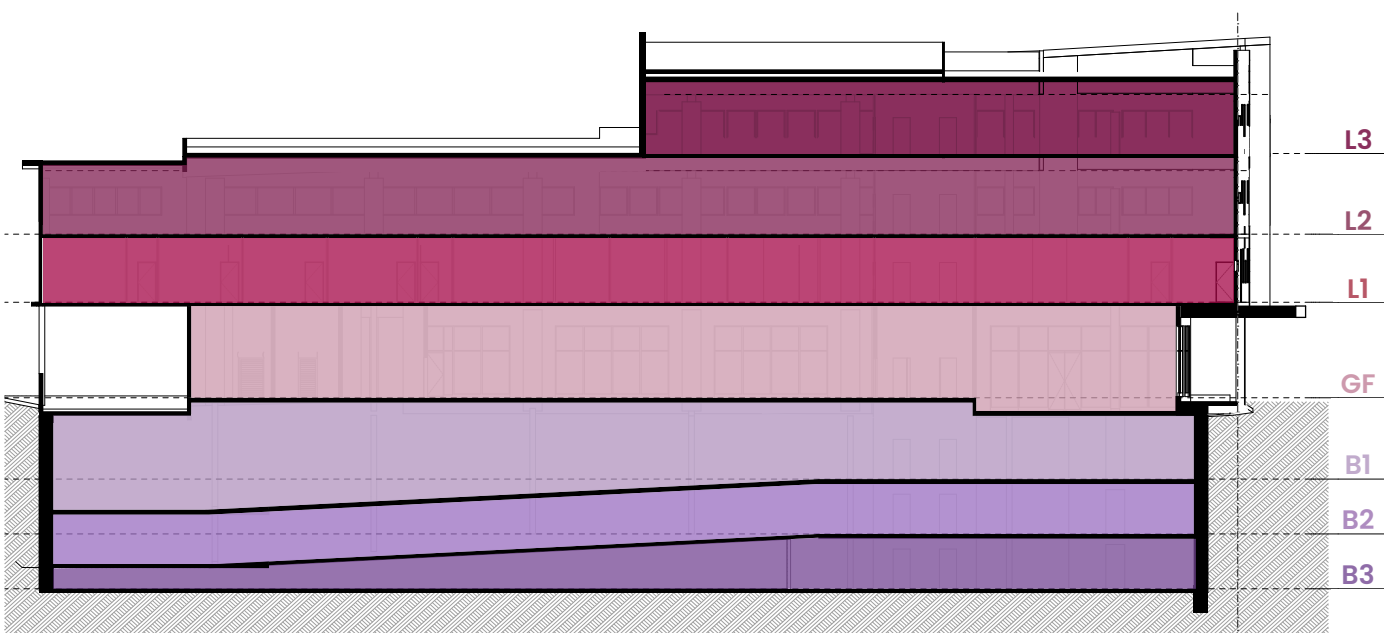
The first of its kind in North Brisbane, Chermside Health Hub is an impressive 5,300m<sup>2</sup> of healthcare development that will transform the delivery of care to the surrounding communities.

The future of healthcare is integration: bringing in a variety of medical specialists, general practice, and urgent care together under one roof to reimagine healthcare starting with the patient experience.

Located on the corner of Gympie Road and Rode Road, Chermside Health Hub will provide four floors of possibilities for healthcare professionals to develop, grow, create, or begin their journey.

## Floor plans

- Rooftop Terrace
- Level 3 ≥ 900m<sup>2</sup>
- Level 2 ≥ 1800m<sup>2</sup>
- Level 1 ≥ 1800m<sup>2</sup>
- Ground Floor ≥ 1000m<sup>2</sup>
- Basement 1 ≥ 46 Car parks
- Basement 2 ≥ 66 Car parks
- Basement 3 ≥ 69 Car parks





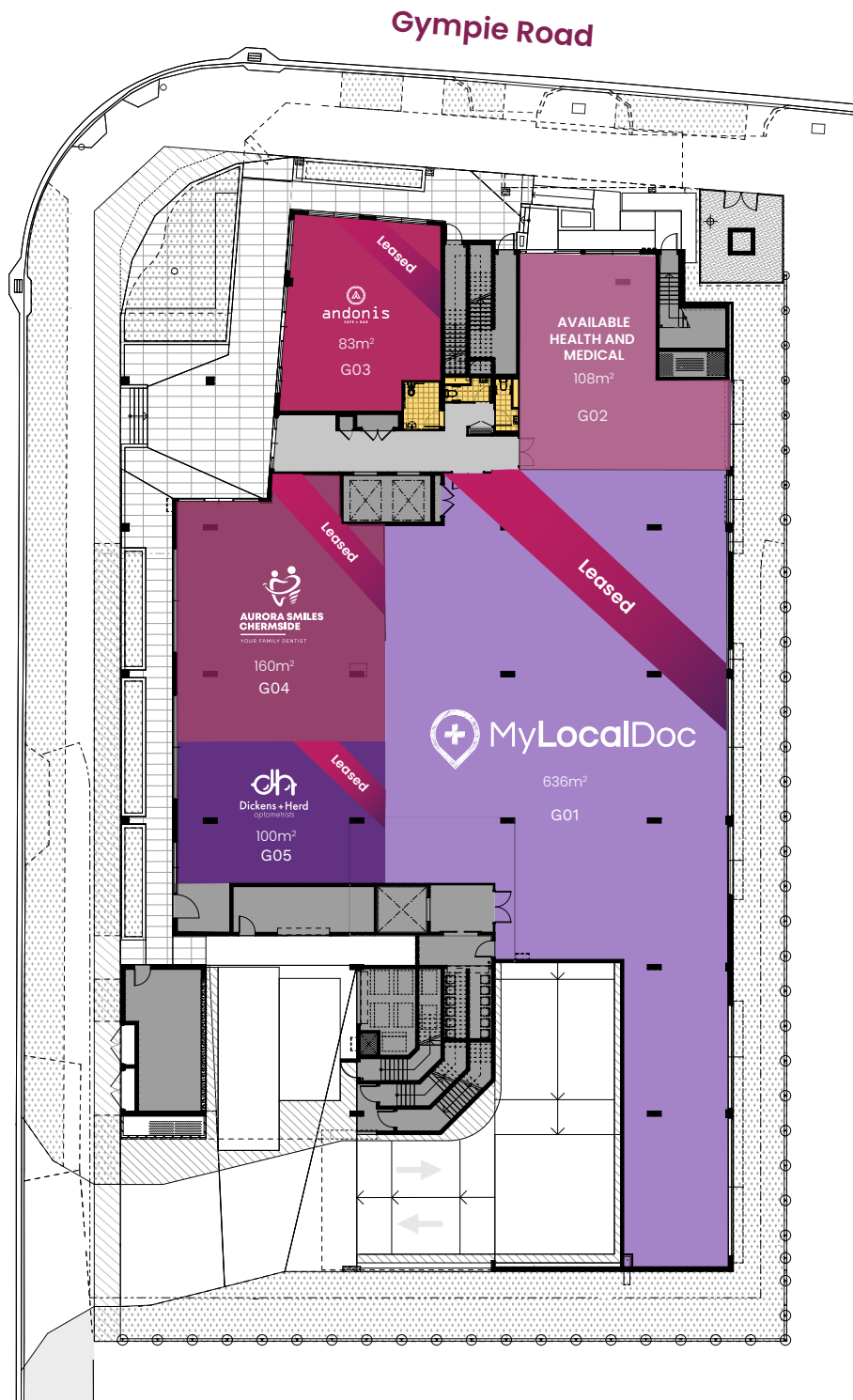
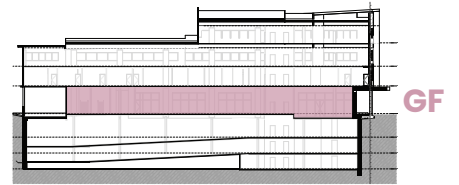


# Integrated Health Hubs focused on continuum of care.



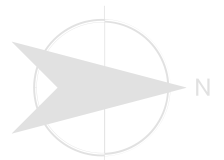
Elyse Hardy  
0423 210 916

# Ground Floor



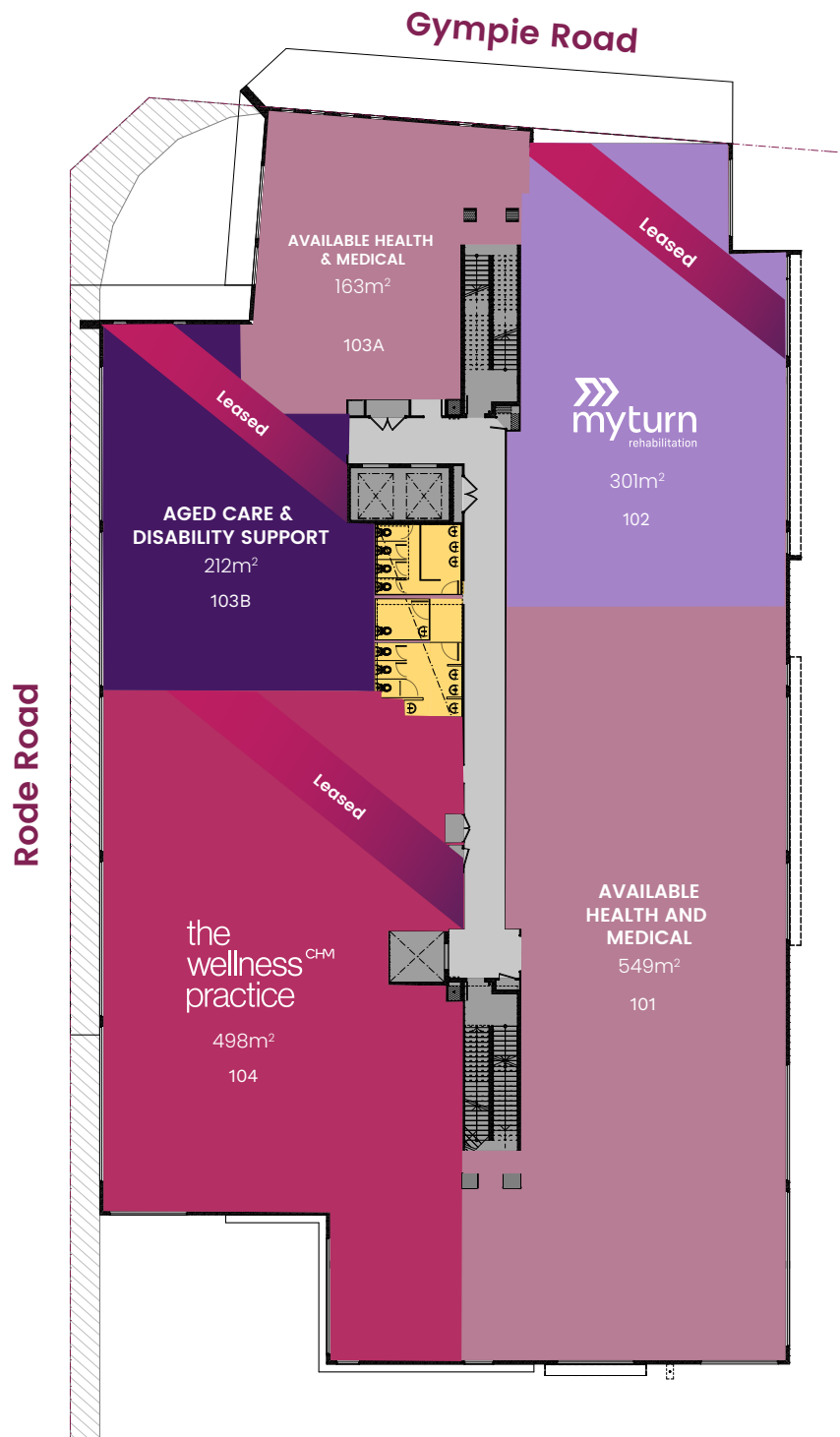
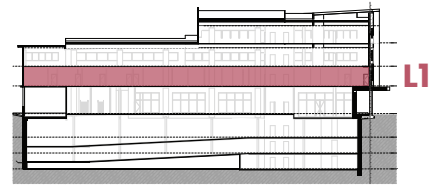
## Not to Scale.

All areas are indicative and subject to final survey.  
Internal layout drawings are indicative only and items shown are not included in the purchase.



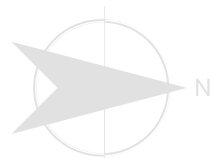


# Level One

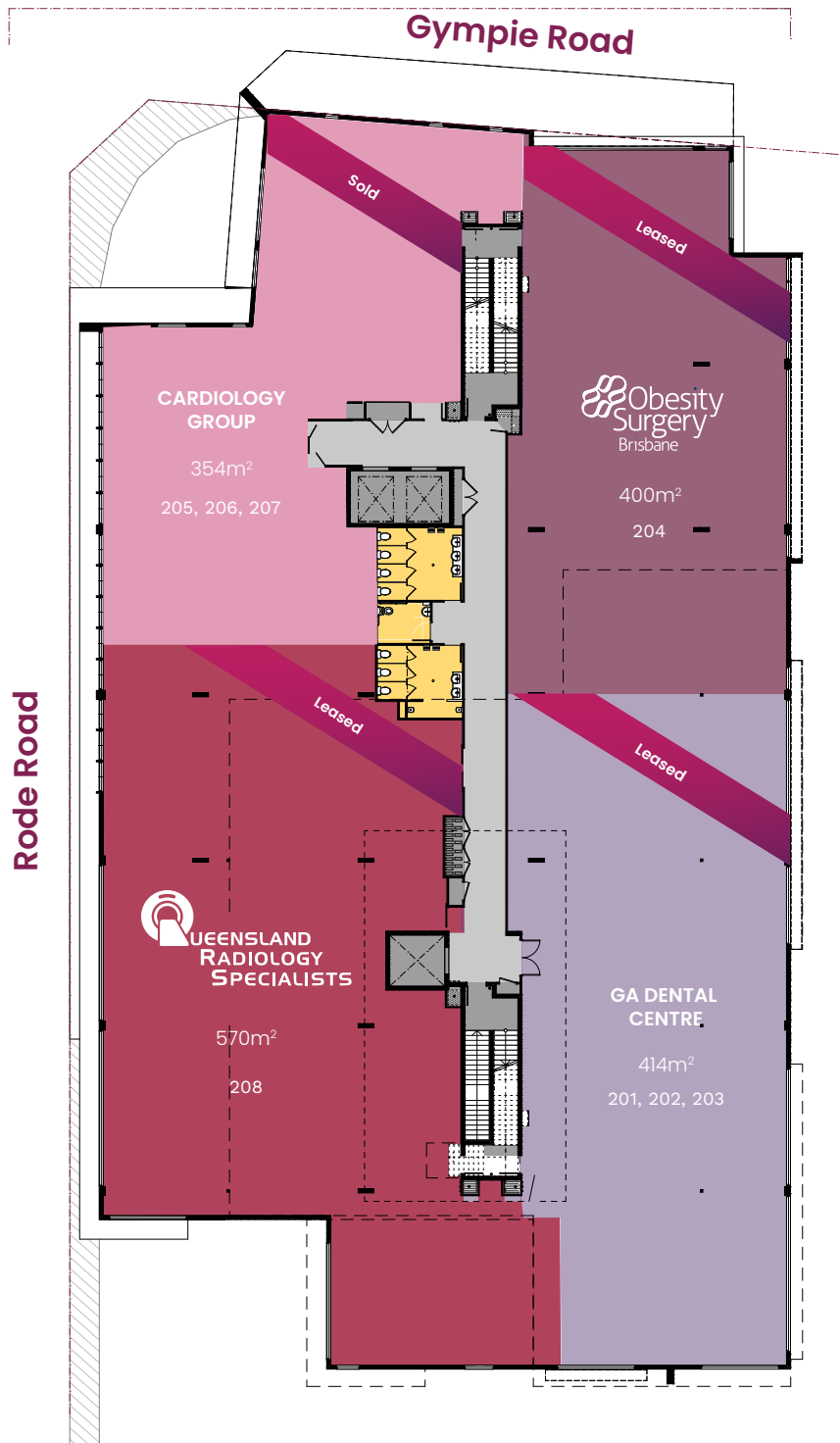
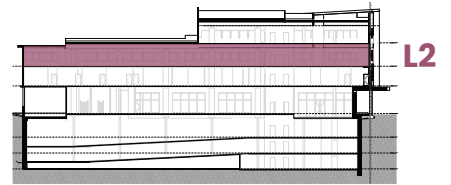


## Not to Scale.

All areas are indicative and subject to final survey.  
Internal layout drawings are indicative only and items shown are not included in the purchase.

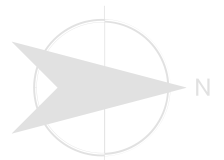


# Level Two



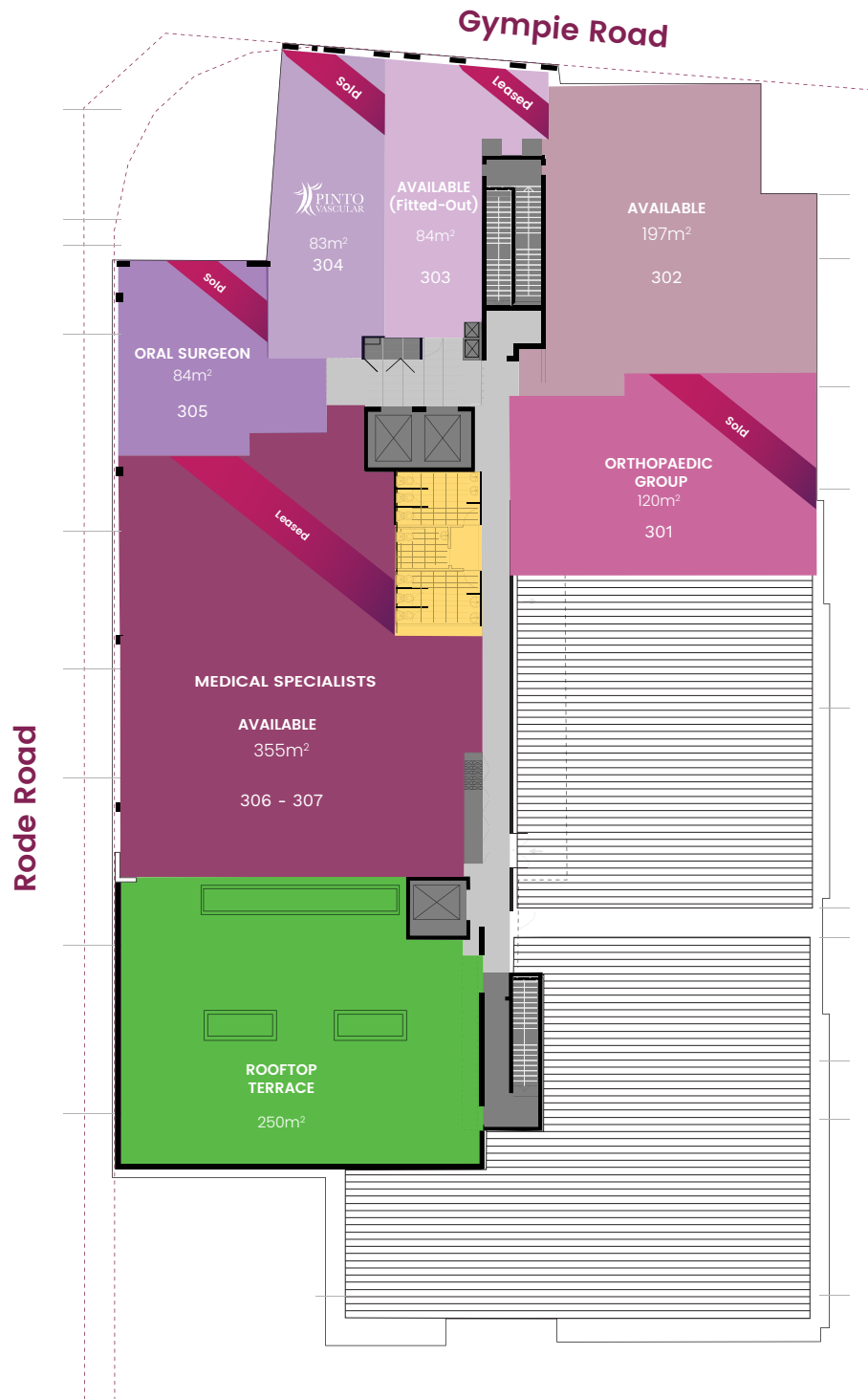
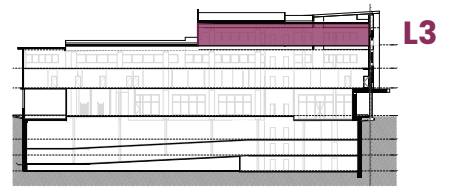
## Not to Scale.

All areas are indicative and subject to final survey.  
Internal layout drawings are indicative only and items shown are not included in the purchase.





# Level Three

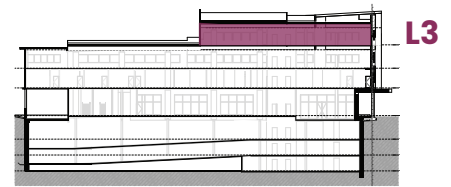


## Not to Scale.

All areas are indicative and subject to final survey.  
Internal layout drawings are indicative only and items shown are not included in the purchase.



# Rooftop Terrace



In this age of well-being focused workplaces, the integration of green space is a progressive and impactful initiative. Regular exposure to green environments has been shown to enhance concentration, creativity, and productivity.

## Features

- **Panoramic views of the Brisbane cityscape**
- **Integrated green space**
- **Seating designed for your comfort and relaxation**
- **Focused well-being space for your health and wellness**







Opportunities are  
open for all medical  
professionals.



[www.healthhubs.com.au](http://www.healthhubs.com.au)

# Your Practice. Your Way.

**We offer a unique end-to-end service that delivers options for turnkey fit-outs: an experience rarely observed in the property and healthcare industries.**

We specialise in health and medical projects, including detailed fit-outs that meet the needs of health professionals. With a wealth of experience in the healthcare sector, we are able to offer solutions to our clients as they begin their Health Hub journey.

## Services

- Interior design
- Project management
- Layout flow
- Furniture & fitting
- Acoustic design
- Compliance & safety







## Chermside Health Hub is a part of the Health Hubs network; an initiative of the Cornerstone Group.

From our beginnings as a family-owned construction company in Southeast Queensland, our story is a journey of passion that is inspired by people in everything we do. Cornerstone Group was founded by Simon Heazelwood in 2005 as Cornerstone Building Developments (CBD).

The company soon expanded working on a wide range of projects in education, health, community facilities, and aged care. Cornerstone has always been driven by its values, creating thriving communities and encouraging a mindset that goes beyond bricks and mortar by seeking to give back.

For over 10 years the health and medical sectors

have been Cornerstone's main focus. With the development of 'Health Hubs' it has created an opportunity to bring together general practice, multidisciplinary specialist doctors, allied health, and day hospital facilities.

To learn more about Cornerstone Group, please visit our website.







Sales & Leasing  
Options Available



Elyse Hardy  
0423 210 916

[www.healthhubs.com.au](http://www.healthhubs.com.au)