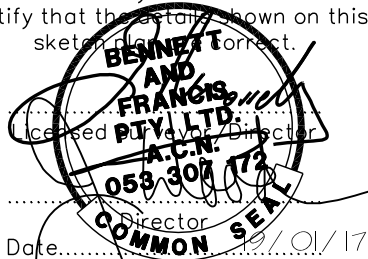


Bennett & Francis Pty. Ltd. A.C.N. 053 307 172
certify that the details shown on this
sketch plan are correct.



Easements omitted for clarity

PLAN FOR LEASE PURPOSES

TITLE REFERENCE
50195173

(Being part of Level A of a Building)

Of Lease 1A
In Lot 77 on RP898070,
Parish of Enoggera,
County of Stanley.

ALL AREAS SHOWN HEREON ARE
CALCULATED TO THE NEAREST
SQUARE METRE.



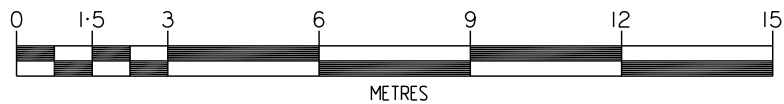
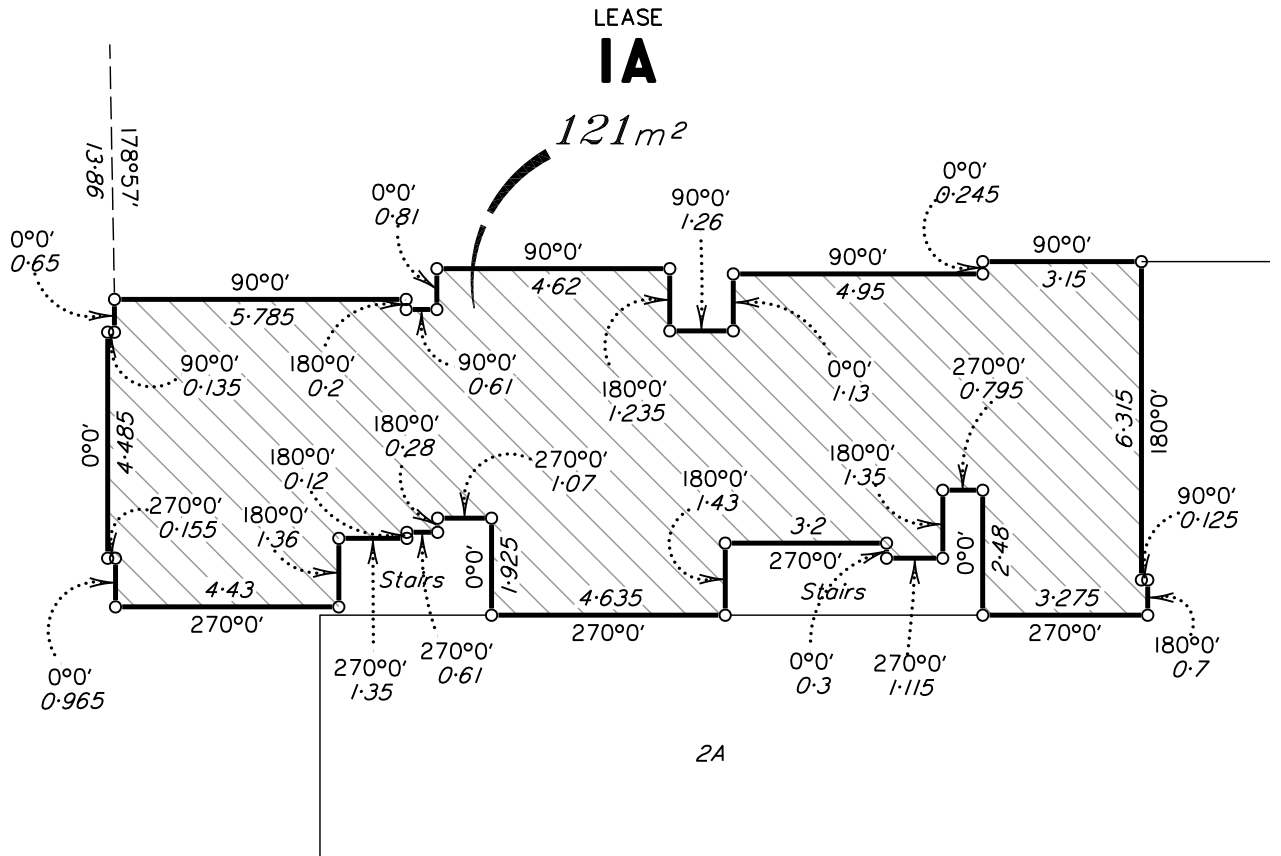
Bennett & Francis Pty. Ltd.

Surveying, Cartography, Computing,
Mapping, Town Planning.
ACN. 053 307 172

100 Ipswich Road,
Woolloongabba Q 4102
Phone (07) 3239 5444
<http://www.bfsurveys.com.au>

Drawn DP	Date 19/01/17
F.W. DP	F.B. File
File 03209501	Checked
Scale A4	Approved
Plan Ref. 032095.01	

DIAGRAM



Tenancy measured in accordance with Net Lettable Area – Office Buildings (NLA) as defined in Property Council of Australia Limited March 1997 Method of Measurement.