

# Lot 2, Anzac Ave, Mango Hill



## Development Features:

- Twin 500sqm buildings
- Seeking pre-comits
- Geared to Automotive retail
- Ample Parking on site
- Multiple container height roller doors
- Adjoining existing service station
- Exposure to over 50,000 cars per day



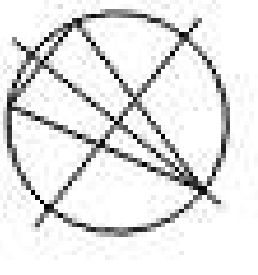
Get in touch for more information

(07) 3482 4333 or [victor@keymax.com.au](mailto:victor@keymax.com.au)

[www.keymax.com.au](http://www.keymax.com.au)

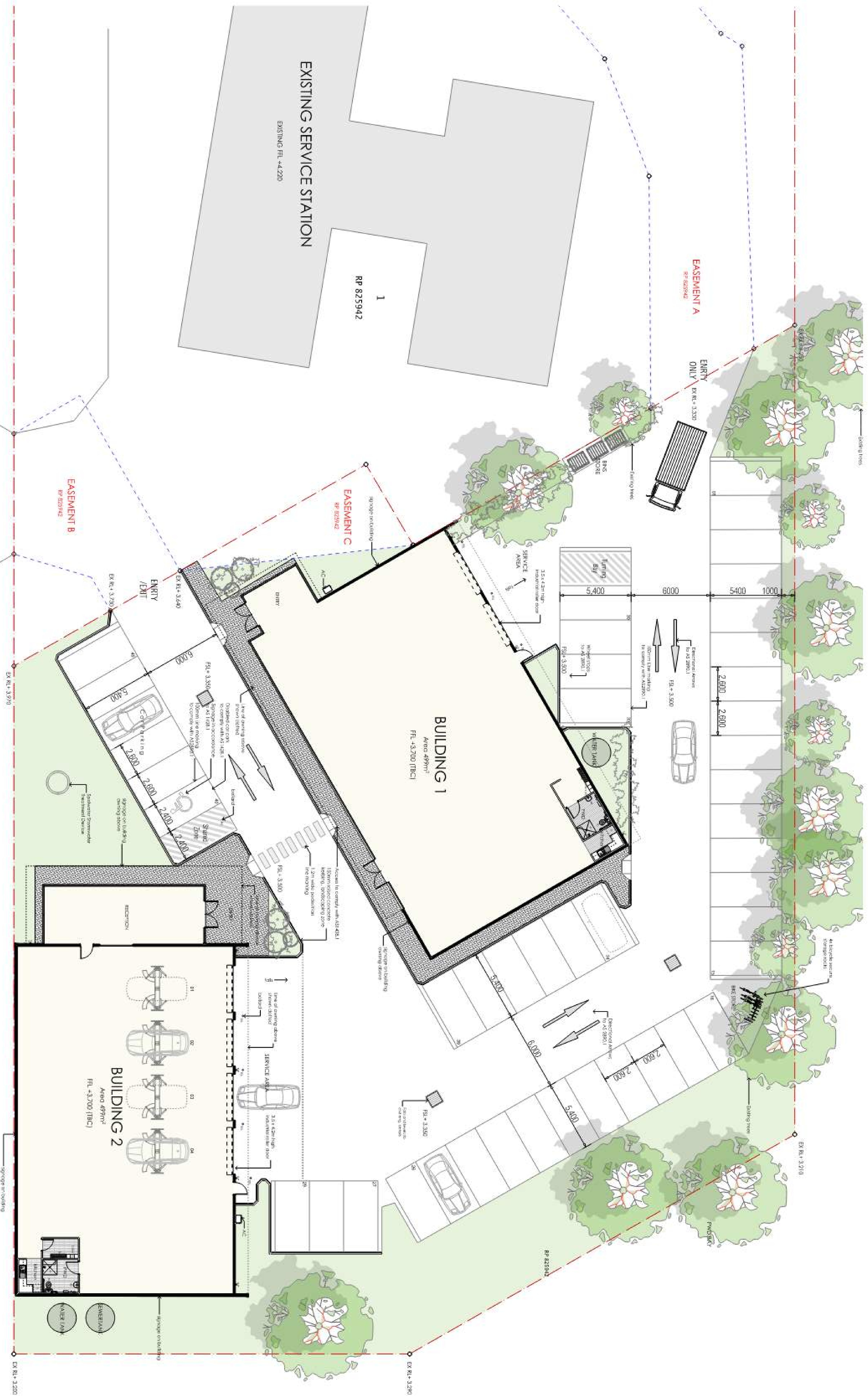






1 ground level

A N Z A C A V E N U E



**LOT 2 ANZAC AVENUE**  
PROPOSED COMMERCIAL DEVELOPMENT • MANGO HILL • QLD  
CLIENT : KEYMAX PROPERTY GROUP • DEVELOPMENT APPLICATION

DRAWING	DATE	ISSUE	AMENDMENTS	DATE	ISSUE	AMENDMENTS
Ground Level Plan	JOB No.	ML2129	DWG. No.	DA.05	Rev.	A
	28.11.21 A Development Application Issue					