

Rev.	Amendment	Date
P1	80% Issue	01/07/2022
P2	PA DOORS & STAIRS ADDED	14/07/2022
C1	STAGE 1 BRC	20/07/2022
C2	T3 OFFICE FIT-OUT & MEZZANINE ADDED	24/09/2022
C3	TENANCY MODIFICATIONS	07/10/2022
C4	ROADWAY MODIFICATIONS	12/10/2022

KEYNOTE LEGEND

- ARMCO ARMCO BARRIER
- BOL BOLLARD
- DP1 DOWNPIPE - TYPE 1
- DP2 DOWNPIPE - TYPE 2
- FE FIRE EXTINGUISHER
- FH DOUBLE-HEAD FIRE HYDRANT
- FHR FIRE HOSE REEL
- RWT RAIN WATER TANK

WALL TYPES

- WT1 2.4m HIGH CONCRETE DADO WALL
 - 150mm THICK
- WT2 5.1m HIGH CONCRETE WALL
 - 150mm THICK
- WT3 TRIMDEK CLADDING
 - 29mm T5 PROFILE STEEL CLADDING IN COLORBOND SURFMIST
 - FIXED ON STEEL GIRTS
- WT4 MONUMENT EXTERNAL WALL
 - COLORBOND STEEL MONUMENT CLADDING ON EXTERNAL SIDE, RUNNING VERTICALLY
 - 35mm BATTENS
 - 90mm STEEL STUDS @ MAX. 600mm CTS
 - 13mm GYPROCK PLASTERBOARD
 - PROVIDE MOISTURE RESISTANT LININGS TO WET AREAS
 - NO LINING TO UNEXPOSED SIDE
- WT5 BOULEVARD EXTERNAL WALL (ONE SIDE)
 - FIELDSERS FINESSE BOULEVARD COLORBOND STEEL CLADDING ON EXTERNAL SIDE, RUNNING HORIZONTALLY, COLOUR: BASALT
 - 35mm BATTENS
 - 90mm STEEL STUDS @ MAX. 600mm CTS
 - 13mm GYPROCK PLASTERBOARD
 - PROVIDE MOISTURE RESISTANT LININGS TO WET AREAS
 - NO LINING TO UNEXPOSED SIDE
- WT6 BOULEVARD EXTERNAL WALL (DOUBLE SIDES)
 - FIELDSERS FINESSE BOULEVARD COLORBOND STEEL CLADDING ON BOTH SIDES, RUNNING HORIZONTALLY, COLOUR: BASALT
 - 35mm BATTENS
 - 90mm STEEL STUDS @ MAX. 600mm CTS
 - 13mm GYPROCK PLASTERBOARD
 - PROVIDE MOISTURE RESISTANT LININGS TO WET AREAS
 - NO LINING TO UNEXPOSED SIDE
- WT7 INTERNAL PARTITION
 - 90mm STEEL STUDS @ MAX. 600mm CTS
 - R2.0 INSULATION WITHIN STUD FRAMING
 - 13mm GYPROCK PLASTERBOARD (PROVIDE MFR LININGS IN WET AREAS)
 - NO LINING TO UNEXPOSED SIDE
- WT8 TOILET PARTITION
 - 20mm THICK COMPACT LAMINATE
- WT9 BOULEVARD CANOPY PARAPET
 - FIELDSERS FINESSE BOULEVARD COLORBOND STEEL CLADDING ON EXTERNAL SIDE, RUNNING HORIZONTALLY, COLOUR: BASALT
 - 35mm BATTENS
 - 2 LAYERS OF 90mm STEEL STUDS @ MAX. 600mm CTS
 - 10mm THICK FC LINING
- WT10 MONOCLAD CANOPY PARAPET
 - 3mm THICK MONOCLAD SOLID ALUMINUM CLADDING IN SILVER WHITE ON EXTERNAL SIDE
 - 35mm BATTENS
 - 2 LAYERS OF 90mm STEEL STUDS @ MAX. 600mm CTS
 - 10mm THICK FC LINING

NOTE: EXTERNAL CLADDING SHALL BE INSTALLED IN ACCORDANCE WITH MANUFACTURER'S DETAILS AND ENSURE FULLY WATER PROOF TO MEET PART F1.1 OF THE BCA

AREA LEGEND

- T1 OFFICE/AMENITIES
- T1 WAREHOUSE
- T2 OFFICE/AMENITIES
- T2 WAREHOUSE
- T3 OFFICE/AMENITIES
- T3 WAREHOUSE

T1 OFFICE/AMENITIES	237 m ²
T1 WAREHOUSE	2520 m ²
TOTAL	2758 m ²
T2 OFFICE/AMENITIES	330 m ²
T2 WAREHOUSE	2847 m ²
TOTAL	3177 m ²
T3 MEZZANINE	38 m ²
T3 OFFICE/AMENITIES	239 m ²
T3 WAREHOUSE	2419 m ²
TOTAL	2696 m ²

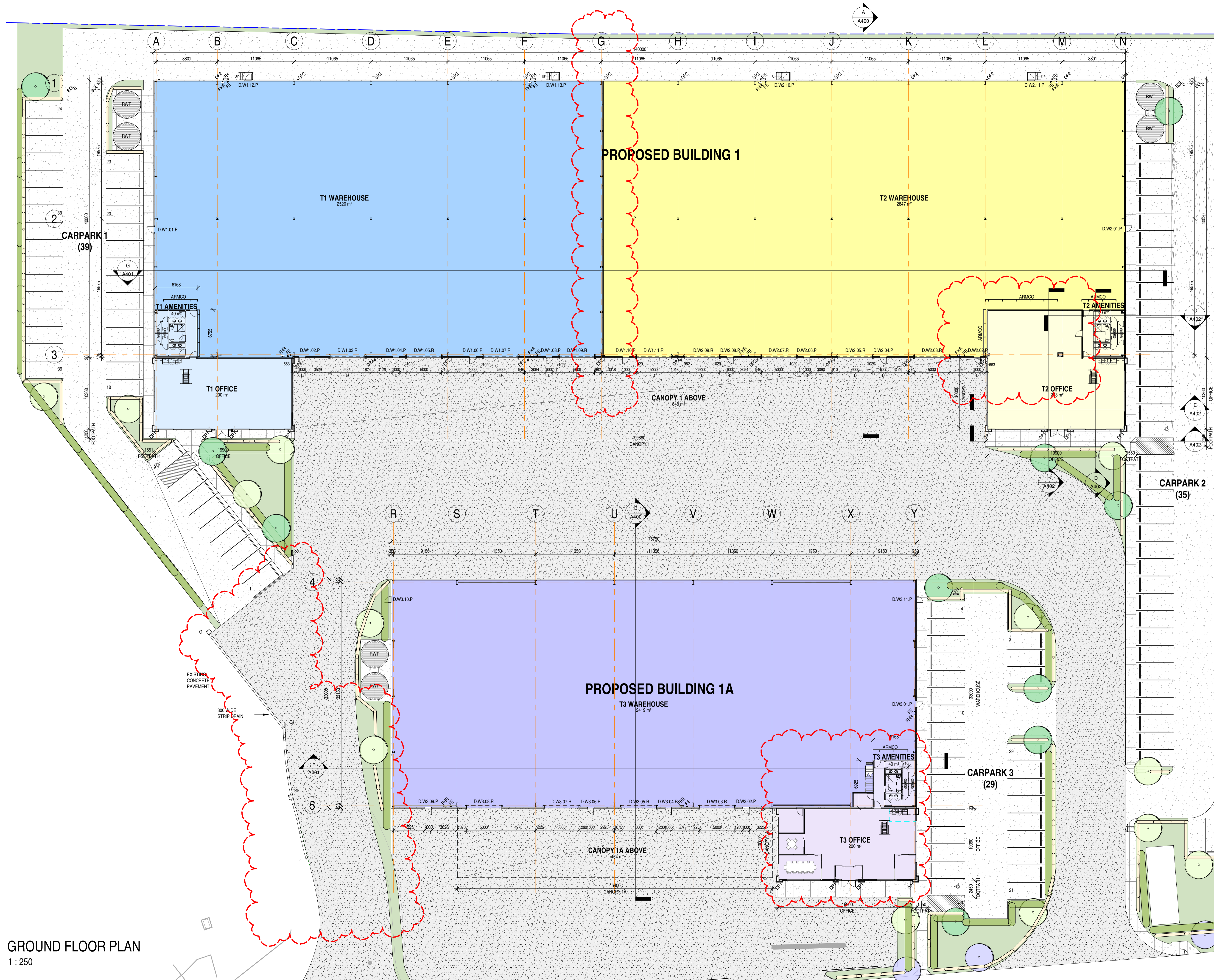


CHARLES STURT INDUSTRIAL ESTATE
BUILDING 1&1A
CHELTENHAM PARADE, WOODVILLE

GROUND FLOOR PLAN

Scale As indicated
Drawn RC
Date 09/06/2022
Job No. 2021090

Dwg No. A200 Rev. C4 A1 SHEET



GROUND FLOOR PLAN
1 : 250