



Suite 19.02

25 Bligh Street

NLA : 108m²
Available: December 2021

KINGSMEDE

Contact Sarah

0421 133 848
swillcox@kingsmede.com.au

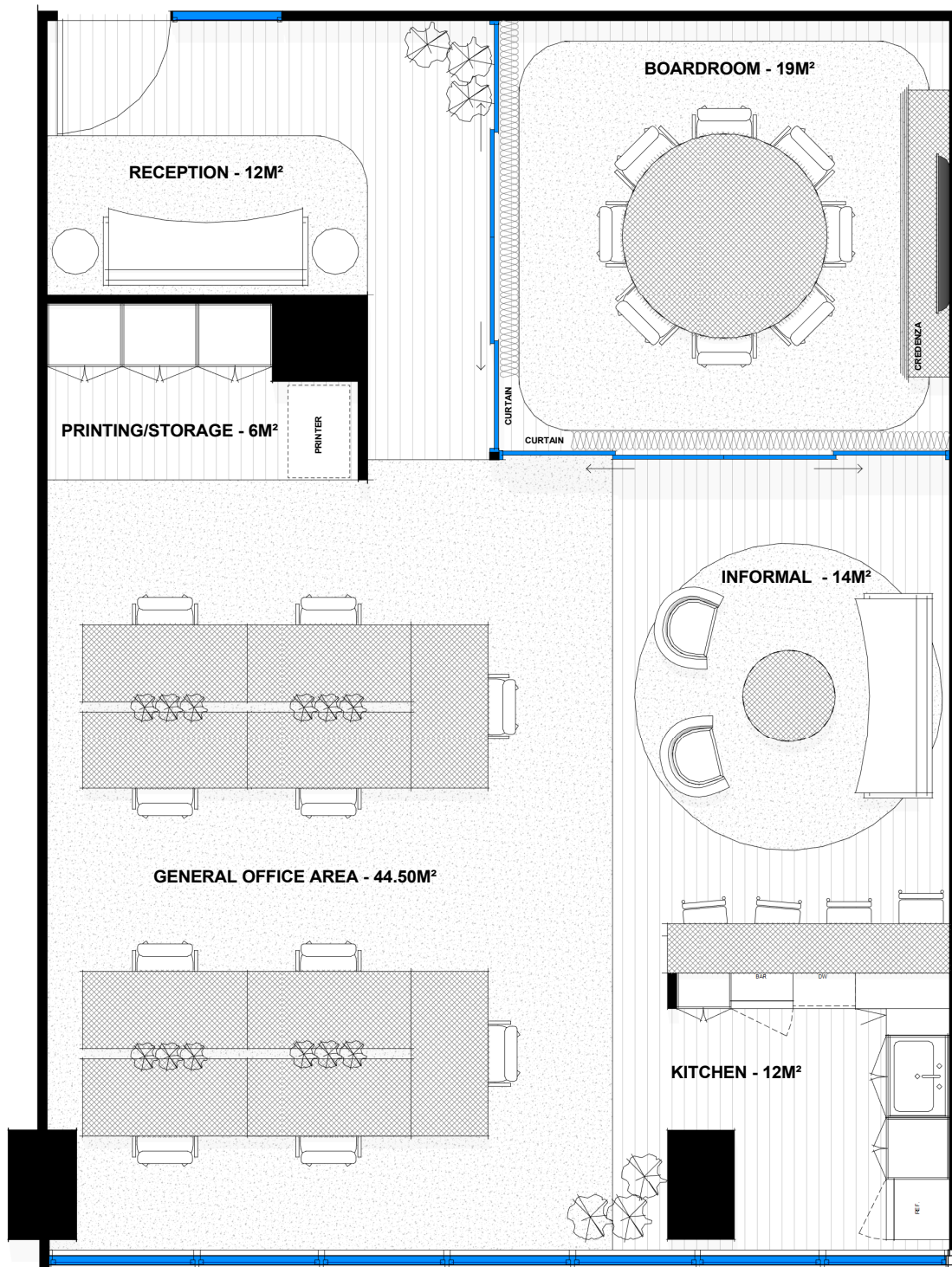


*Finishes are indicative

Suite 19.02

NLA: 108m²

- Brand new designer fitout with quality finishes and city views
- Spacious reception
- Fully-fitted kitchen and breakout area / collaborative space
- 8 seater boardroom
- 8 seater boardroom
- Open plan with 10 workstations
- Onsite building management
- Private gym and squash court
- End of trip facilities, including towel service
- Car & motobike parking available
- Excellent transport links



Bligh Street