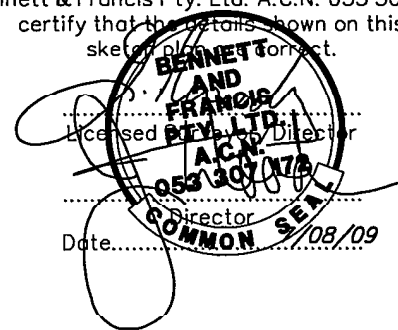


TITLE REFERENCE
50379473

Bennett & Francis Pty. Ltd. A.C.N. 053 307 172
certify that the details shown on this
sketch plan are correct.



PLAN FOR LEASE PURPOSES

(Being part of the Ground Floor of a One Storey Building)

Of LEASE 2A,
In Lot 2 on SPI141428,
Original Portion 76,
Parish of Toombul,
County of Stanley.

ALL AREAS SHOWN HEREON ARE
CALCULATED TO THE NEAREST
SQUARE METRE.



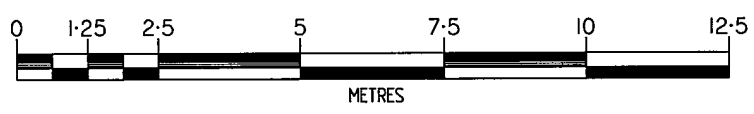
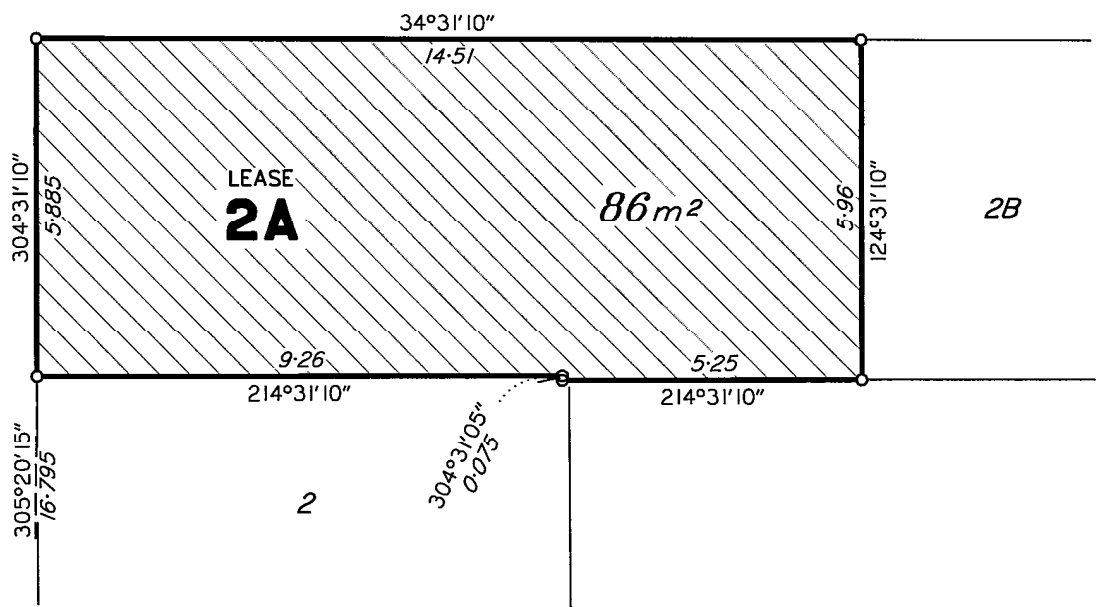
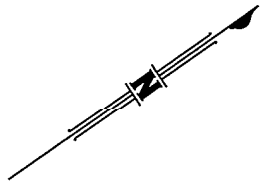
Bennett & Francis Pty. Ltd.

Surveying, Cartography, Computing,
Mapping, Town Planning.
ACN. 053 307 172

25 Donkin Street,
West End. Q. 4101,
Phone (07) 3239 5444
<http://www.bfsurveys.com.au>

Drawn JKW	Date 5/8/09
F.W. JKW	F.B. 09-008
File 02332901	Checked
Scale 1: 750	Approved
Plan Ref. 023329.01	

DIAGRAM



Tenancy measured in accordance with Gross Lettable Area
 – Retail (GLAR) as defined in Property Council of Australia
 Limited March 1997 Method of Measurement.

Plan Ref.
023329.01