

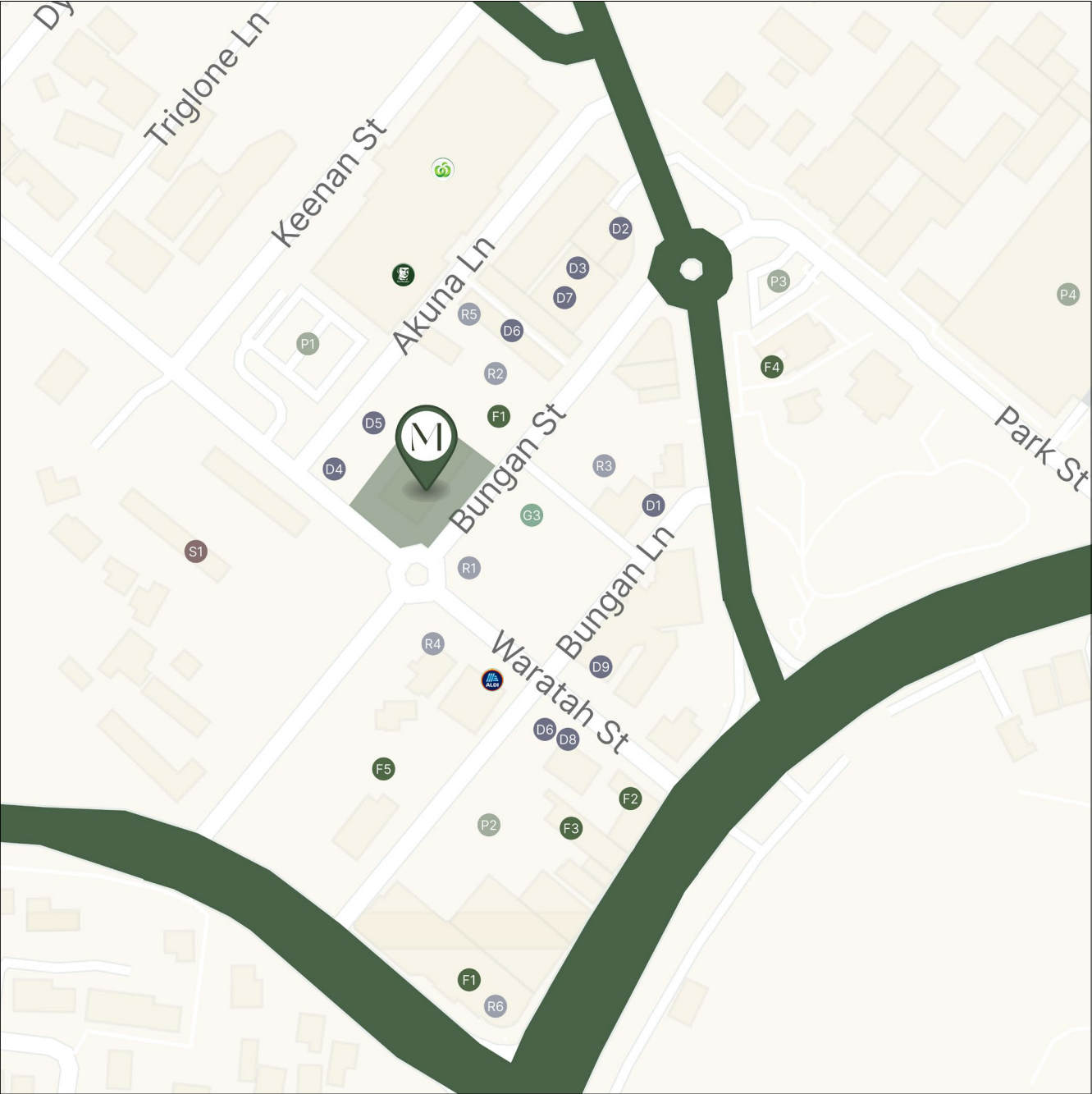
MAYA

Located in the heart of Mona Vale, MAYA embodies a rare retail opportunity.

Located in the heart of Mona Vale, MAYA blends coastal charm with architectural sophistication, establishing itself as the Northern Beaches' premier retail address. Positioned alongside major names such as Woolworths, Dan Murphy's, Aldi, and with Guzman Y Gomez as the anchor tenant, this location offers unmatched visibility and access within a dynamic commercial and social precinct.



Location



Parking

- P1 Public Parking Car Park
- P2 4 Bungan Lane
- P3 1 Park Street
- P4 Pittwater Place Shopping Centre

Retail & Commercial

- R1 Lifeline
- R2 Plunkett's Pharmacy
- R3 ANZ Bank
- R4 Vodafone
- R5 Douglass Hanly Moir Pathology
- R6 Bing Lee

Grocers

- W Woolworths
- DM Dan Murphy's
- G3 Mona Vale Quality Butchers
- A ALDI

Dining & Bars

- D1 Bare Wholefoods
- D2 Chargrill Charlies
- D3 Pattison's Patisserie
- D4 Cafe Monaka
- D5 I love Pizza
- D6 Ichiban Sushi

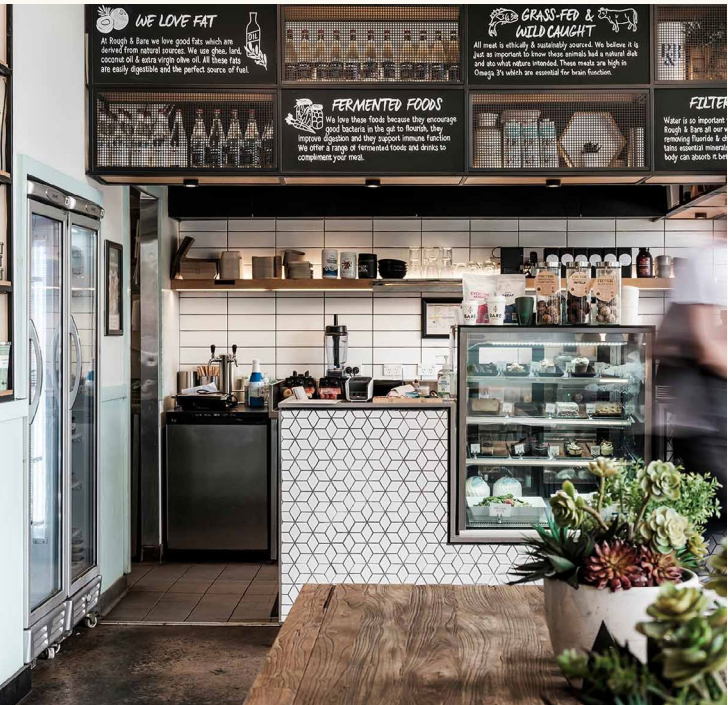
- D7 Banana Blossom
- D8 Dominos
- D9 Bakers Delight

Fitness

- F1 Curves
- F2 Plus Fitness
- F3 F45 Training
- F4 Northern Beaches Pilates
- F5 Citycave

Schools

- S1 Mona Vale Public School



Inspired by the beach with a deep connection to the coast, the impeccably crafted building responds to the essence of Mona Vale's coastal lifestyle.

Position Your Business for Success

MAYA at 19 Bungan Street stands as a cornerstone in Mona Vale's evolving commercial landscape, combining vibrant retail opportunities with a sense of community. Designed to captivate, this landmark space embraces a welcoming environment, complete with a beautifully landscaped courtyard framed by native greenery and cascading palms. Retailers can tap into this well-curated experience, appealing to an array of demographics, from young families and professionals to retirees drawn by Mona Vale's laid-back, inclusive vibe.

An Inviting Community Hub

MAYA creates an inviting community space that elevates the retail experience. Each shopfront and entrance is thoughtfully integrated with natural flow, maximizing customer movement and interaction. Quality finishes like natural stone and timber, paired with textured brickwork, reflect the beauty of Mona Vale's coastal surroundings, filling the space with light throughout the day.



Secure your place at MAYA, the “Best on Bungan” address, and gain a foothold in this high-demand market.



Mona Vale

Population: 14,634
Median Age: 45
Average Household Size: 2.6



Weekly Income

Families: \$2,600
Individuals: \$1,040
Households: \$2,600



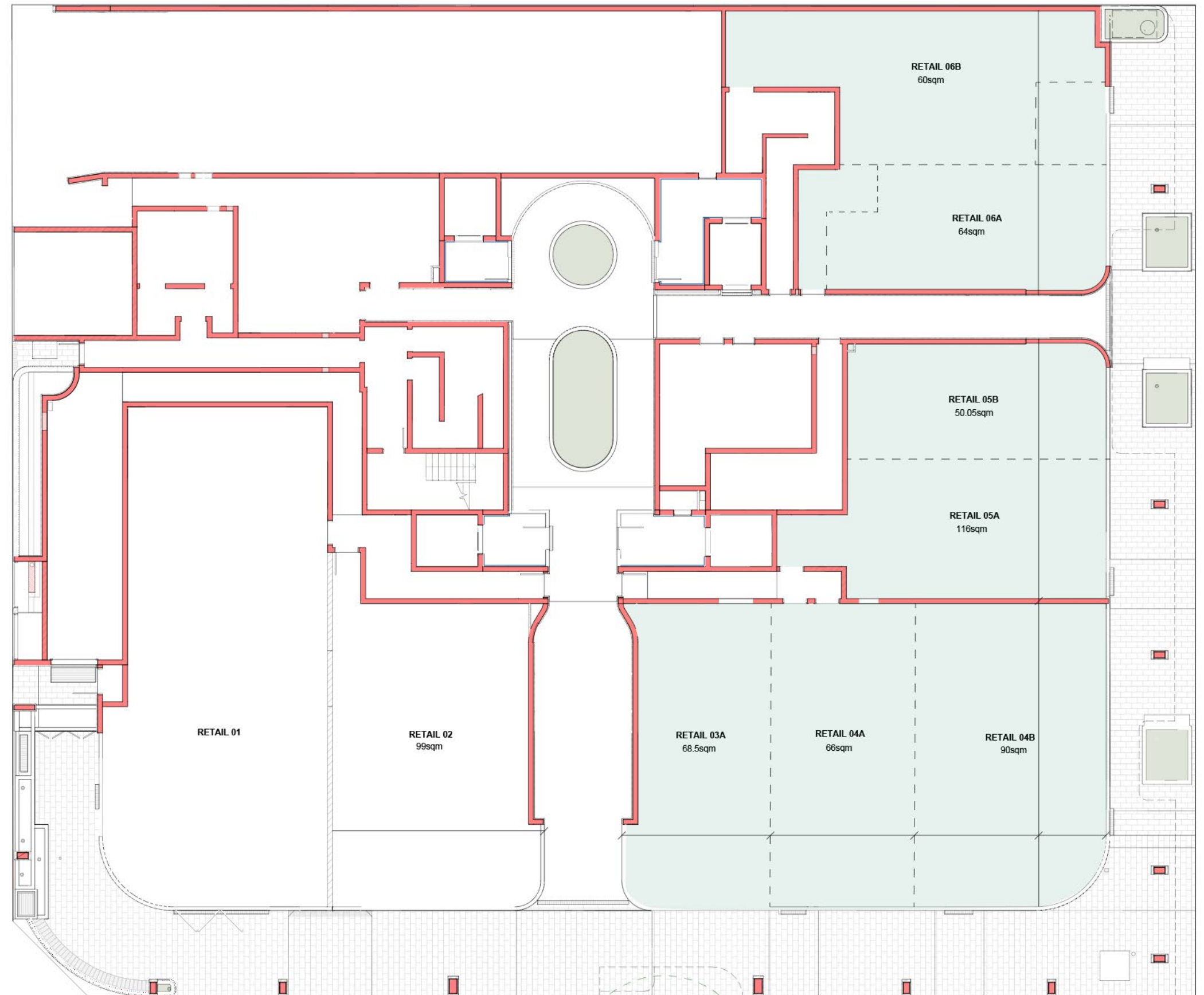
Age Demographics

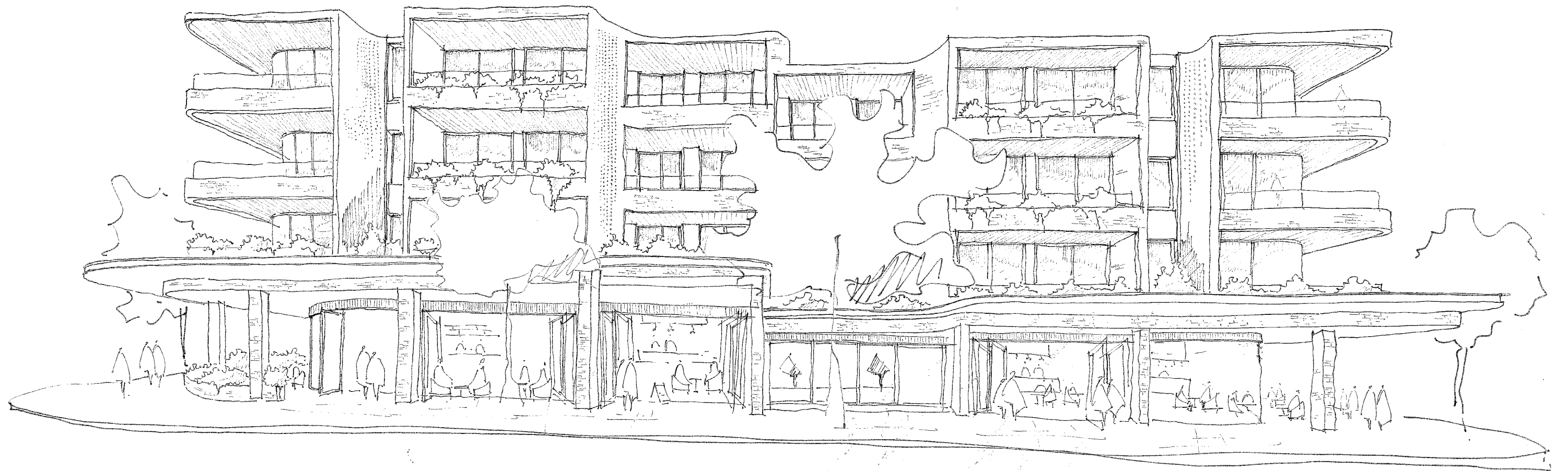
Under 15 years: Approximately 15%
15-65 years: Approximately 55%
Over 65 years: Approximately 29%



Flexible configurations can be provided to accommodate high calibre operators and offerings.

- **Flexible Tenancies:** Spaces ranging from 60sqm to 240sqm, adaptable to suit various business needs, with configuration options for flexibility
- **Ideal Uses:** Perfect for food & beverage, retail, and service providers seeking maximum exposure
- **Distinctive Design:** Full base building services, high ceilings, and a striking glazed shopfront enhance the visual appeal
- **Ready for F&B:** Includes dedicated alfresco areas and central amenities
- **Customer Convenience:** Retail-dedicated basement parking with 31 spaces







Matt Hudson 0404 001 166
Michael Khouri 0420 989 353



Patrick Kelleher 0414 300 806