



Commercial & Industrial
AGENCY
 OF THE YEAR
 6 TIME WINNER



Property Management
AGENCY
 OF THE YEAR
 10 TIME WINNER

Commercial SA

Finding better



Auction
Fullarton

Unit 2, 288 Glen Osmond Road

Andrew Turner 0419 859 130
 Evan Florinis 0419 035 104

Fullarton

Unit 2, 288 Glen Osmond Road
Auction



COMMERCIAL &
INDUSTRIAL AGENCY
COMMERCIAL SA



PROPERTY
MANAGEMENT AGENCY
COMMERCIAL & INDUSTRIAL
COMMERCIAL SA

Commercial SA

finding better

Ground Floor Strata Titled Office

- Total office 98sqm
- One of four units in the complex
- Self-contained with own amenities
- Vacant possession

Property Details

Council: Unley
Zoning: BN Business Neighbourhood
Cert. Title: Vol: 5002 Folio: 786

Outgoings

Council Rates: \$2,472.90 p.a.
SA Water: \$ 714.00 p.a.
ES Levy: \$ 616.25 p.a.
Land Tax: \$ 0.00 p.a.
(single holding basis)

GST

GST is applicable to the Sale of this property

Auction

Thursday 7th October 2021 at 11:00am on-site

Contact

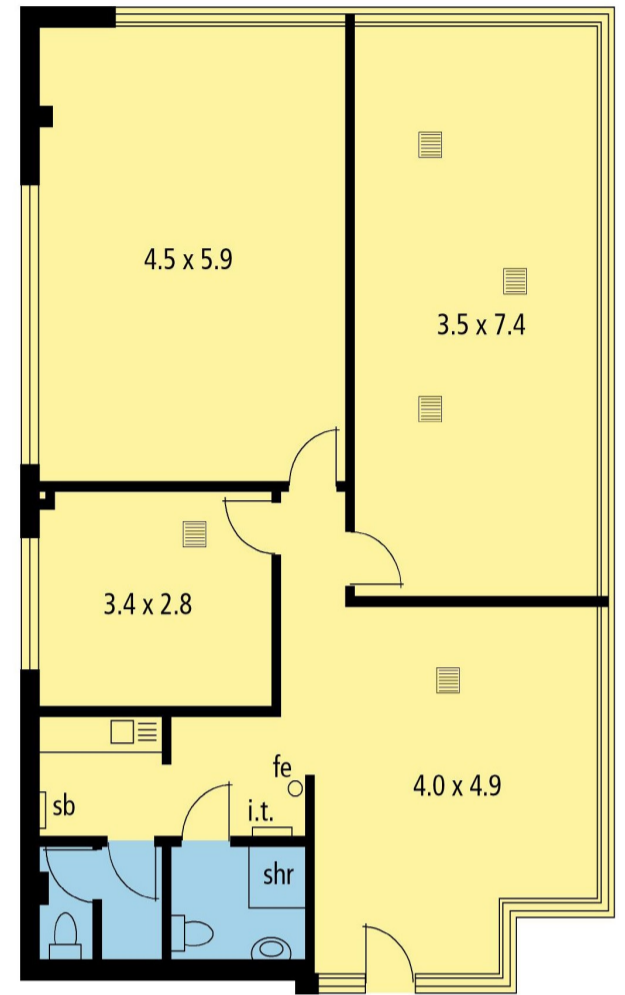
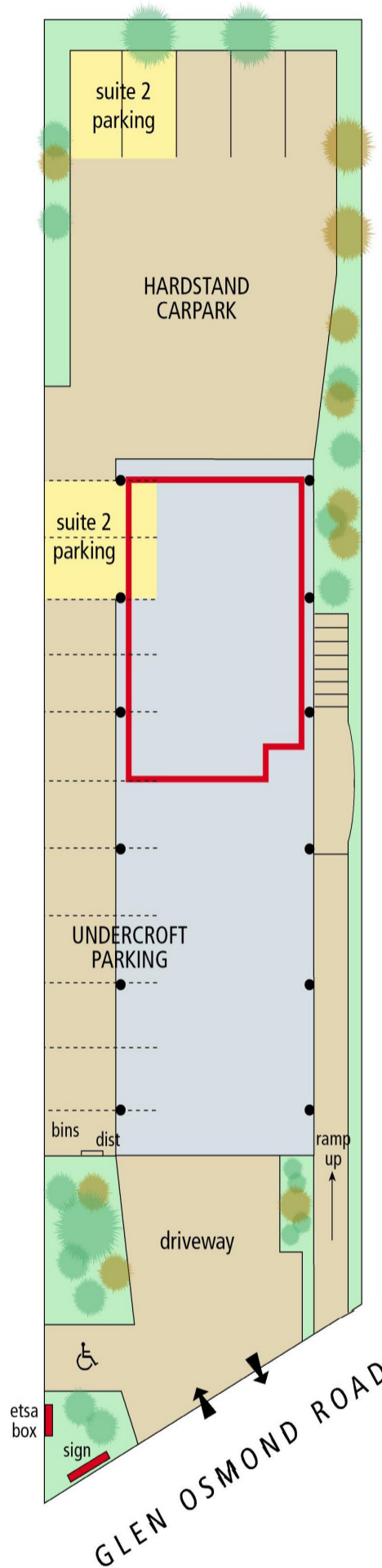
Andrew Turner 0419 859 130
andrew@commercialsa.com.au



Evan Florinis 0419 035 104
evan@commercialsa.com.au



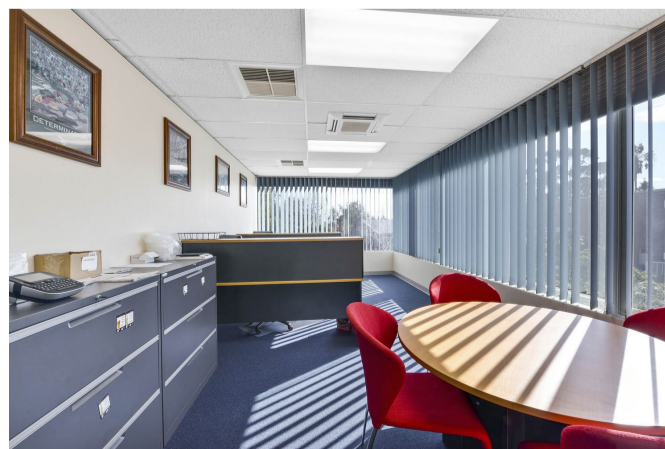
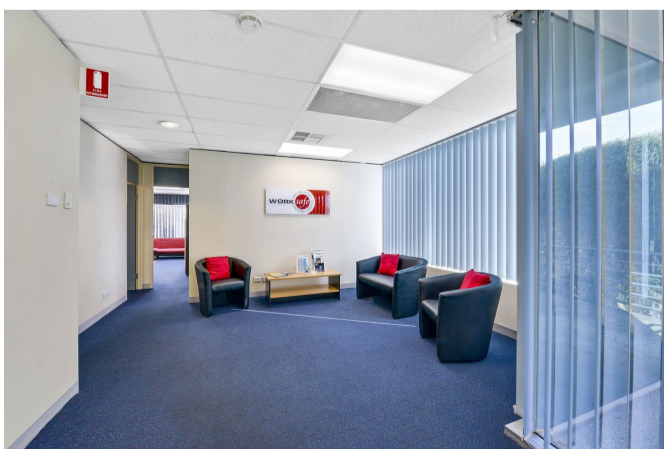
Office: Level 1, 185 Victoria Square, Adelaide
Postal address: GPO Box 2138, Adelaide SA 5001
RLA 165131



Suite 2 288 Glen Osmond Road, Fullarton ESTIMATED NET LETTABLE AREA	
OFFICE:	92 sq.metres
AMENITIES:	6 sq.metres
TOTAL NET LA:	98 sq.metres

ceiling height 2.52m

Complies with the
PCA Method of Measurement



buyers please note – The information contained herein has been supplied to us and we have no reason to doubt its accuracy, however we cannot guarantee it. Accordingly, all interested parties should make their own enquiries to verify the information. If you are seriously considering any property we strongly recommend that you advise us so that you can be contacted if the vendor decides to accept an offer. Section 7 Statements are available from our office for three days prior for all auctions and for thirty minutes at place of auction before it commences. All prices shown are exclusive of GST, and may be subject to GST. All sizes, dollar values and areas stated in this publication are approximate.

