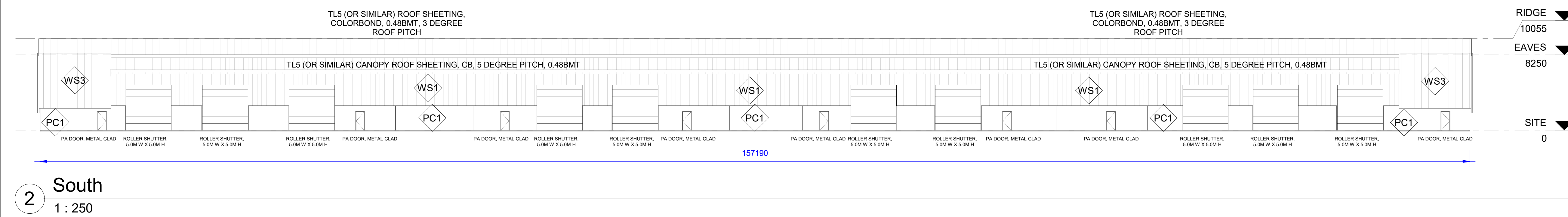
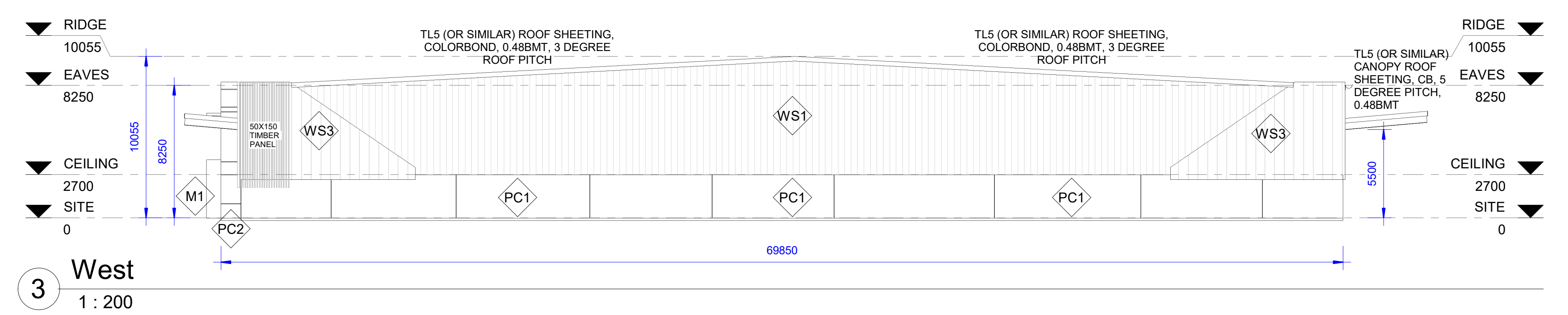


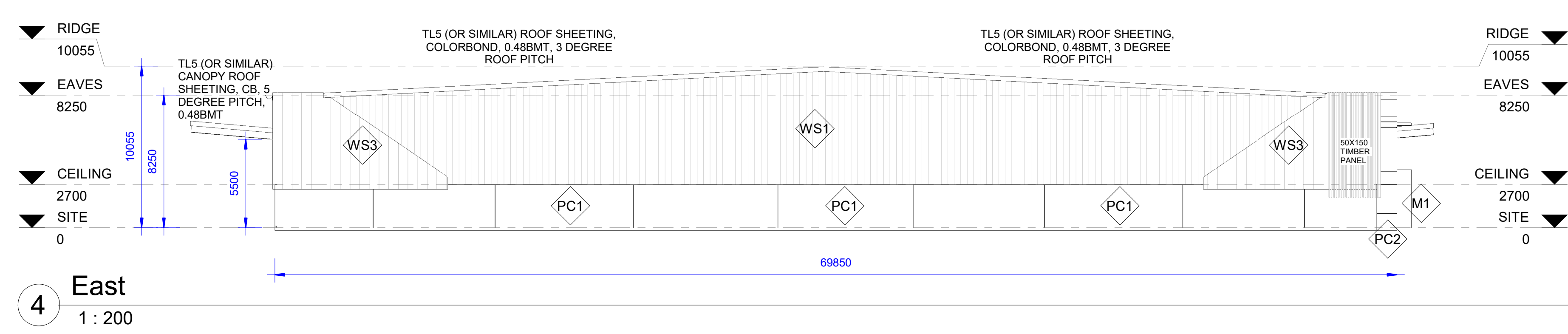
1 North  
1 : 250



2 South  
1 : 250



3 West  
1 : 200



4 East  
1 : 200

Wall Schedule	
Type Mark	Description
CA	Commercial aluminium framing, black powder coat frame, grey glass to code, full height glazing to include contrast strip in accordance with AS1428.1
GS1	92mm steel stud, lined one side with 10mm gyprock, painted finish Dulux 'Natural White', lined warehouse side with CB lo-rib sheeting 'Surfmist'
GY1	64mm steel stud, lined both sides with 10mm gyprock, painted finish Dulux 'Natural White'
GY65	64mm steel stud, lined one side with 10mm gyprock, painted finish Dulux 'Natural White'
M1	Steel stud frame, Matrix (or similar) externally, painted finish Dulux 'Domino'
PC1	150mm thick precast, natural finish
PC2	150mm thick precast, painted finish Dulux 'Lexicon'
T1	Steel stud frame, Matrix externally, painted finish Dulux 'Western Myall', Lo-Rib sheeting internally
WS1	Colorbond metal cladding, TL5 profile (or similar), light gauge girts as engineered
WS2	Light gauge girts, lined either side with Colorbond metal sheeting
WS3	Colorbond metal cladding, TL5 profile (or similar), light gauge girts as engineered, with extended cleats
WS4	Colorbond metal cladding, TL5 profile (or similar), light gauge girts as engineered

No.	Description	Date
1	ISSUED FOR REVIEW	8/12/21

**ACCORD PROPERTY**

93-111 EDINBURGH ROAD, DIREK

**ELEVATIONS**

Project number	2075
Date	8/12/21
Drawn by	JY
Checked by	KVM

**A102**

'As indicated	Rev. 1
---------------	--------

PRELIMINARY