

222

COLBURN AVENUE VICTORIA POINT

OFFICE AND MEDICAL SUITES
FOR SALE OR LEASE

www.222colburnavenue.com.au



TIMING

Scheduled to open December 2025

TENANCY SIZES

Commercial Office and Medical Suites from
60 - 500+ sqm

Ground floor retail from 59sqm

METHOD

Individual Lots are offered to the market for
Sale or Lease





THE OPPORTUNITY

This thoughtfully designed three-story development is redefining office accommodation in the Redland Bay area.

222 Colburn Avenue offers versatile retail, office, and medical spaces, blending innovative architecture with practical functionality to enhance workflow and elevate patient care.

The facility features 42 on-grade car parks, generously wide walkways, accessible bathrooms, and lift access on every floor.

PROPERTY OVERVIEW

- State-of-the-art development offering highly flexible, purpose-built space
- Brand new professional office and medical precinct in a growth corridor of Brisbane
- 60 to 500+sqm of high quality retail, medical and office spaces including 42 on grade covered car parking bays



222
Colburn
Avenue

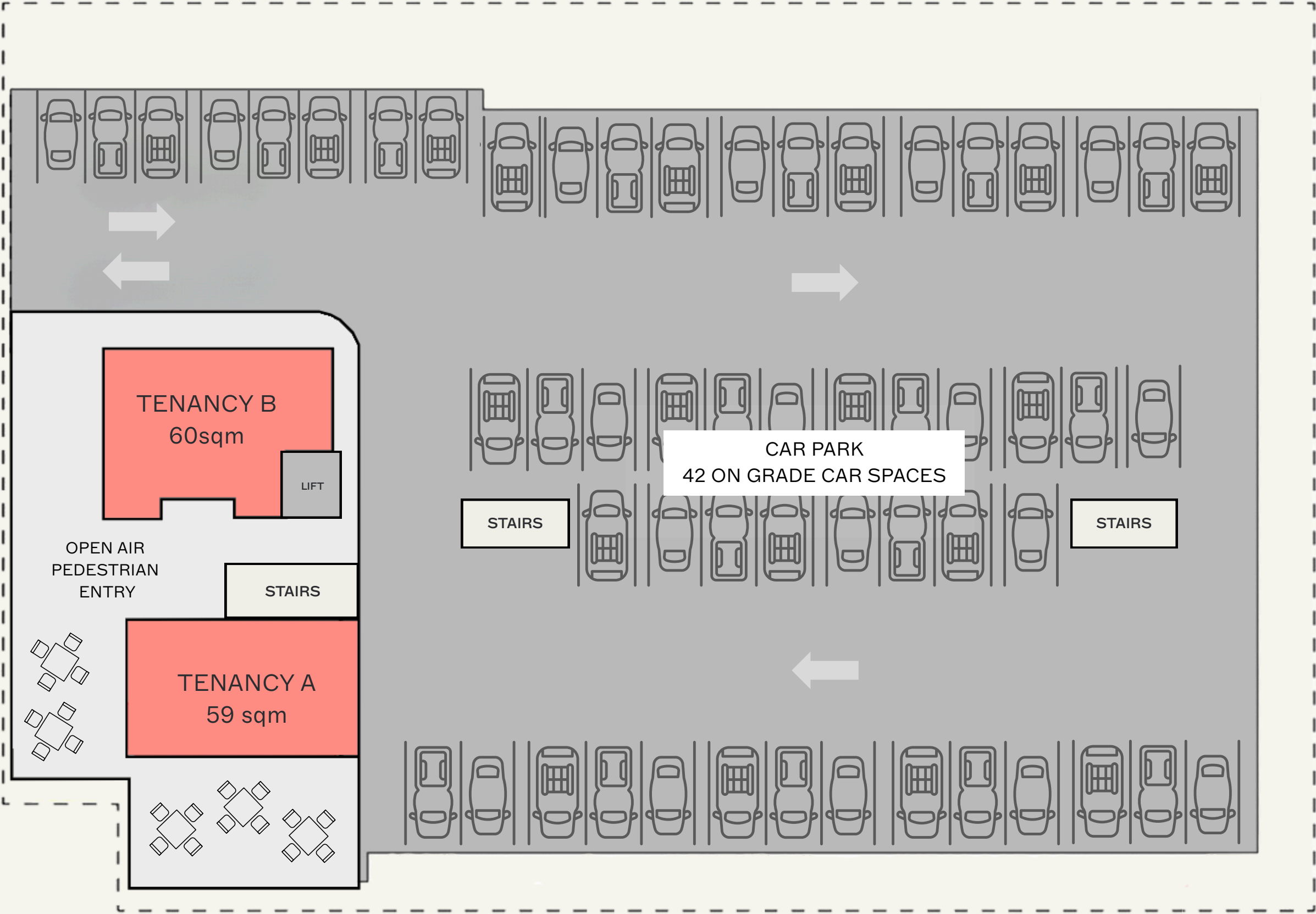
PLANS

Ground Floor

Tenancy A 59sqm

Tenancy B 60sqm

Suites are available for
Lease or Purchase



PLANS

First Floor

Tenancy C	Dentist
Tenancy D	205sqm
Tenancy E	153sqm
Tenancy F	151sqm
Tenancy G	Acquire Strategic Accounting
Tenancy H	Feetology Podiatry
Tenancy I	87sqm

Suites are available for
Lease or Purchase

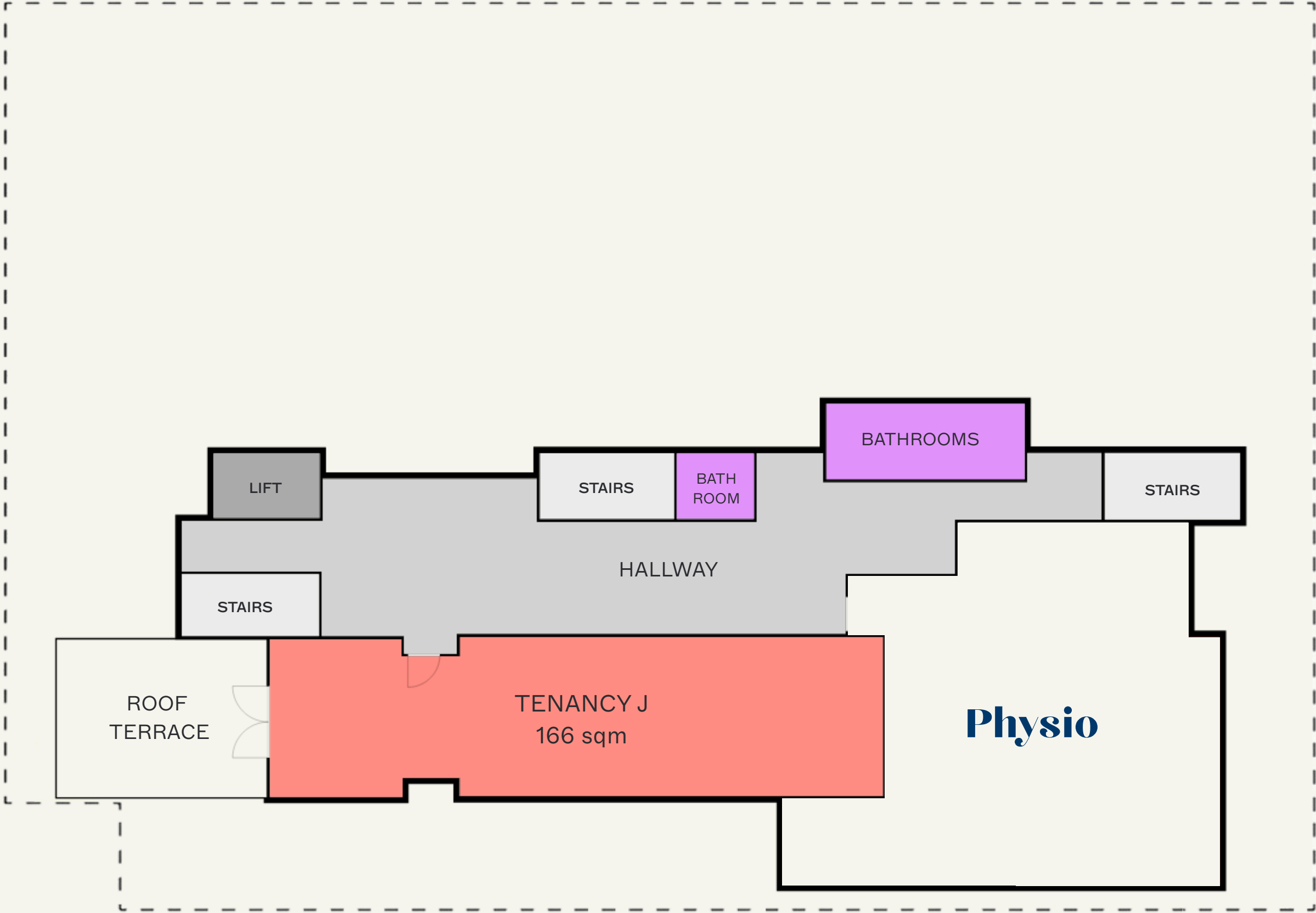


PLANS

Second Floor

Tenancy J	166sqm + Roof Terrace
Tenancy K	Physio

Suites are available for
Lease or Purchase



GET IN TOUCH

To inspect, submit an offer, or for more information,
contact:

Hanna Peard

0422 484 614

hanna.peard@onor.property



Andrew Deane

0413 487 630

andrew@healthspaceproperty.com.au



222 COLBURN AVE, VICTORIA POINT
www.222colburnavenue.com.au

