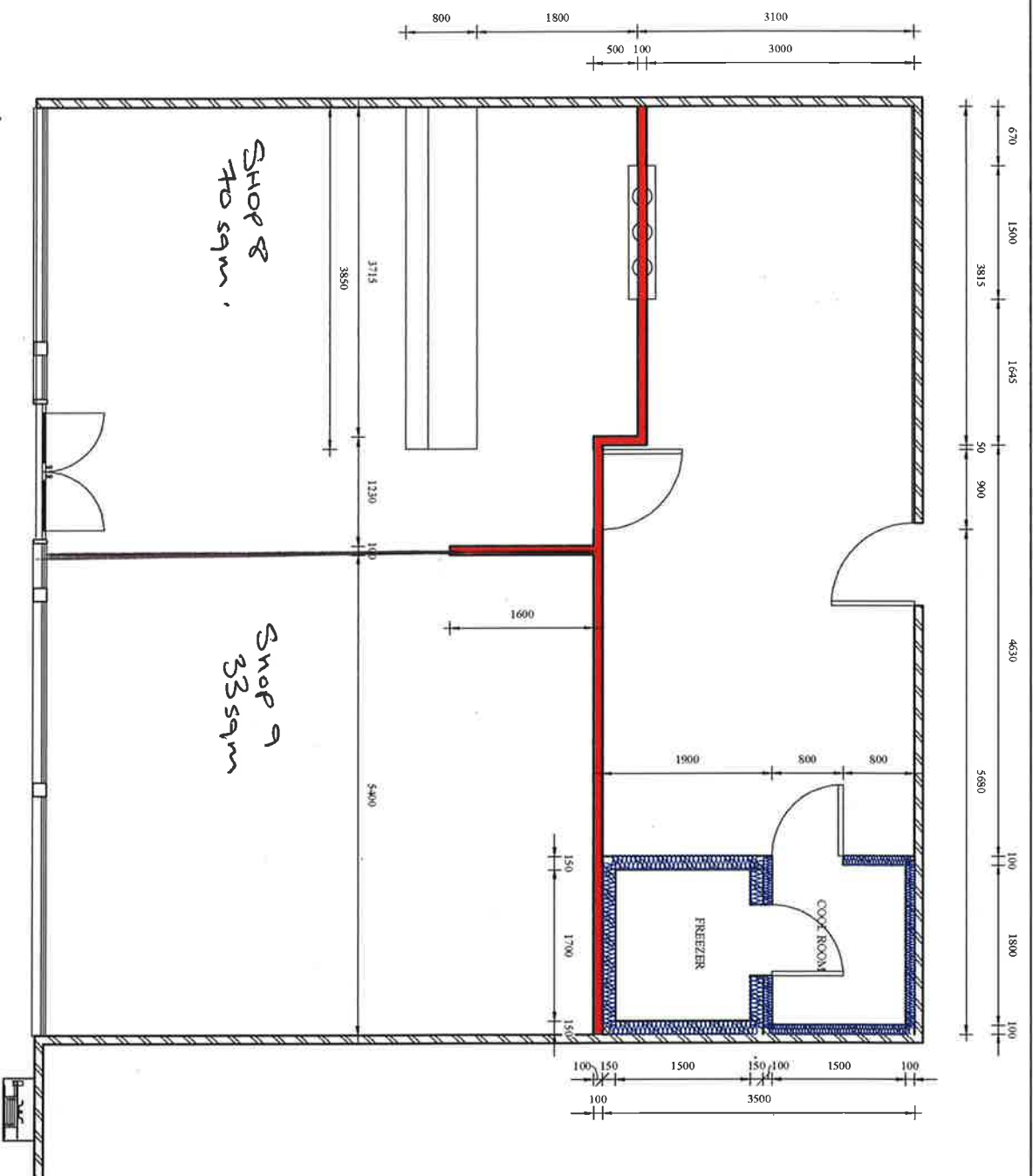




Commercial Kitchen Company
 4/51, 1/200, 1/200, 1/200, 1/200
 4/51, 1/200, 1/200, 1/200, 1/200
 4/51, 1/200, 1/200, 1/200, 1/200
 4/51, 1/200, 1/200, 1/200, 1/200



1 Proposed Floor Plan
1 : 50

Project: A&K SUNRISE
Address: Shops 8 & 9, 348 Foxwell Road, Coomera, QLD 4209



DISCLAIMER:

All drawings are to be read in conjunction with associated engineers drawings where applicable. All equipment, appliances and furniture items shown are close to accurate representations and exact dimensions and clearance requirements should be checked with supplier prior to installation. All dimensions are to be checked on site prior to any on site construction or off-site fabrication. Use written dimensions only, do not scale from printed or electronic drawings. Electronic furnished drawings should be checked for accuracy against the equivalent hard copy issued by **Commercial Kitchen Company**. No responsibility is accepted by **Commercial Kitchen Company** for the misuse or alteration of this drawing in any format. The design and concept expressed on this page are created by **Commercial Kitchen Company** and will be assigned to the client on completion for the sole purpose of the intended project but only for other use or reproduction must be approved by **Commercial Kitchen Company**.

Proposed Floor Plan

Date: 5/05/2016 11:44:20 PM



Scale: 1 : 50

@ A3

REVISION	SHEET NO:	DATE
Rev.	A102	Checker
Rev.		Approver
Rev.		
Rev.		