

ABBREVIATIONS

±	DENOTES CENTRELINE
A/C	AIR CONDITIONER UNIT
AFFL	ABOVE FINISH FLOOR LEVEL
BP	BORER PIER
CKT	COOKTOP
COOL	COOLING
CONC	CONCRETE
COOS	CHECK ON SITE
DB	DISTRIBUTION BOARD
DP-WT	DOWNPIPE TO WATER TANK
DW	DISHWASHER
FHR	FIRE HYDRANT
FHR	FIRE HOSE REEL
GI	FLOOR WASTE GULLY
GI	GRADED INLET
HW	HOT WATER UNIT
LDRY	LAUNDRY / LAUNDRY CABINET
MP	MAIN PANEL
MSSB	MAIN SWITCHBOARD
O/E	OVERFLOW
RC	ROOF EXHAUST DISCHARGE CONVL
REF	REFRIGERATION
ROBE	BUILT-IN ROBE
RHH	RAINWATER HEADER
RWD	RAINWATER OUTLET
SPR	STORM WATER DRAINAGE SPREADER
SP	TO BE CONFIRMED
TBC	TUNISH
TD	TACTILE GROUND SURFACE INDICATOR
TGSI	WASHING MACHINE
WMI	

ELECTRICAL LEGEND

△	SINGLE GPO AT 300 AFL, TYPICAL, AND AT 2000 AFL FOR RANGEHOOD
△	DOUBLE GPO AT 300 AFL, UNO
△	DOUBLE GPO WITH ISOLATOR SWITCH FOR OVEN AT 800 AFL, UNO
△	WEATHER-PROOF DOUBLE GPO AT 300 AFL & UNO THROUGH ROOF
△	BROADBAND / TELEPHONE CONNECTION SOCKET AT 300 AFL, UNO
△	AUDIO VISUAL INTERCOM AT 150 AFL, UNO
△	TELEVISION SERIAL CONNECTION SOCKET MOUNTED AT 300 AFL, UNO

ELECTRICAL NOTES

- REFER TO THE BUILDING SERVICES DRAWINGS, DETAIL & SPECIFICATIONS FOR ADDITIONAL INFORMATION RELATING TO THE POWER, COMMUNICATION SECURITY SERVICES ETC.
- REFER TO THE DETAILED JOINERY DRAWINGS FOR THE ACCURATE PLACEMENT OF ALL OUTLETS INCLUDING MOUNTING HEIGHTS & STRIP LIGHTING
- REFER TO THE REQUIREMENTS SPECIFIED BY THE CABLEMAN FOR DETAILS RELATING TO HOME AUTOMATION, AUDIOVISUAL, HOME ENTERTAINMENT, SECURITY, VIDEO & INTERCOM WORKS
- THESE DRAWINGS TO BE CO-ORDINATED WITH ALL CONSULTANT DRAWINGS

CEILING LEGEND

Fl	FEATURE PENDANT LIGHT 01
P	PENDANT LIGHT 02
Fl, L, O	LED STRIP LIGHTING TO UNDERSIDE OF O/HEAD SHELF
Fl, L, O	LED DOWNLIGHTS TRACK MOUNTED
Ext	EXTERIOR SPOTLIGHT

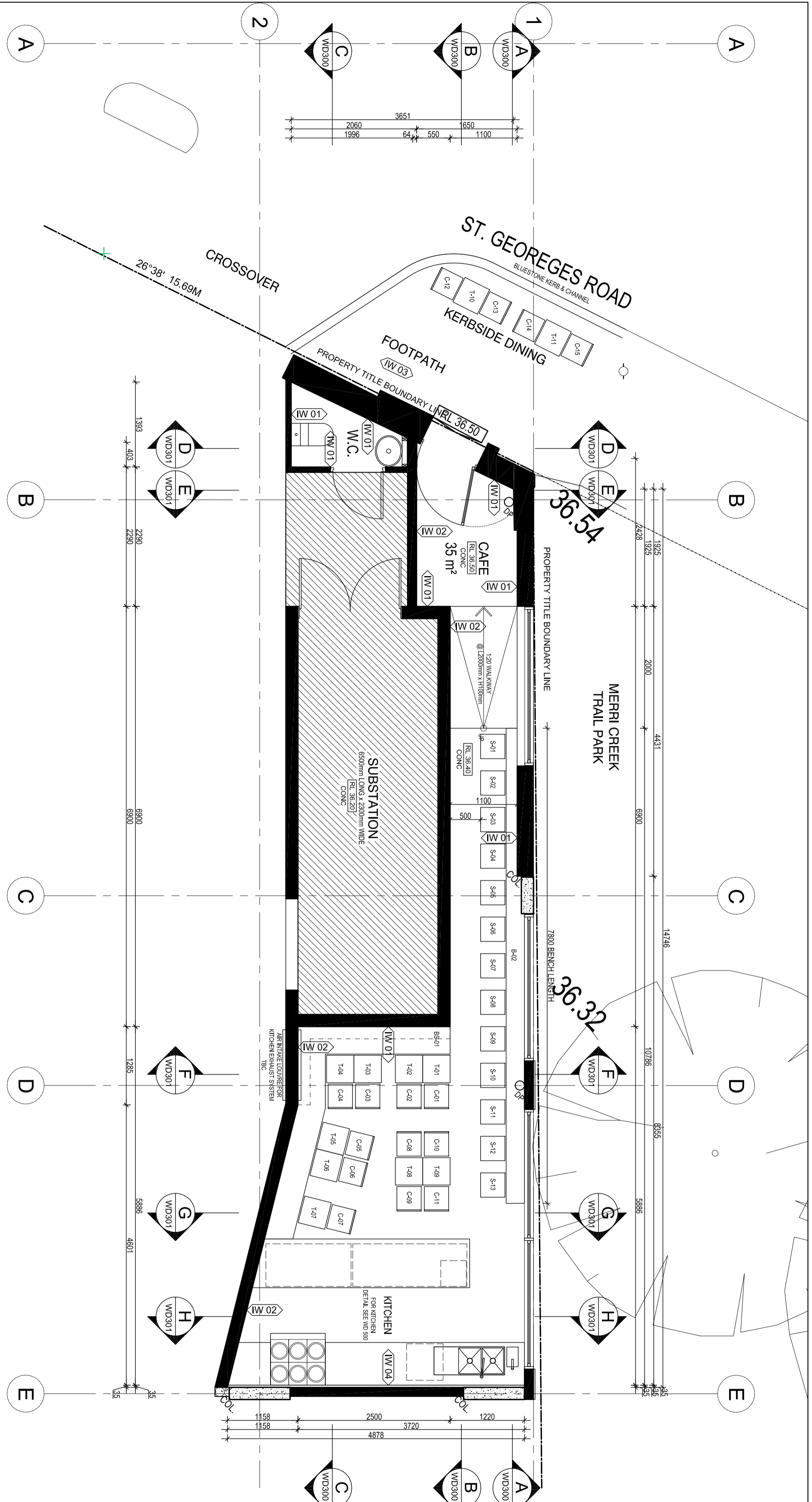
CEILING NOTES

- CEILING HEIGHT AS NOTED
- EXTRACTION FAN, REFER TO ENGINEERS DRAWINGS SMOKE DETECTORS TO AS3786 HARD WIRE TO SWITCHBOARD & BATTERY BACKUP.
- BAND BEAMS WITH TIMBER CLADDING

WALLS LEGEND

◁(IW.01)	EXISTING WALL WITH STUCCO FINISH
◁(IW.02)	EXISTING WALL WITH MURAL FINISH
◁(IW.03)	PROPOSED NEW STUD WALL WITH STUCCO FINISH
◁(IW.04)	MARBLE FINISH TO EXISTING EXTERNAL WALL, SEE WD350 FOR DETAIL.

PRELIMINARY DESIGN REVIEW



01 PROPOSED FLOOR PLAN
WD100 / 1:50 @ A2

SAC BUILDING WORKSHOP
LEVEL 1, SUITE 8
456 ST. KILDA, MELBOURNE
VICTORIA AUSTRALIA 3004
TELEPHONE: + 61 3 9867 5188
FACSIMILE: + 61 3 9867 4078
EMAIL: inquiries@sacb.w.com
www.sacb.w.com

REVISION	NOTES / AMENDMENTS	DATE	CHECKED
A	ISSUE FOR PRELIMINARY REVIEW	19.02.2016	AC
	USE WRITTEN DIMENSION		
	DO NOT SCALE THESE DRAWINGS		

PROJECT MANAGER	PROJECT
STRUCTURAL ENGINEER	NORTHWOOD CAFE
MECHANICAL & LIFTS	at 392 ST GEORGES ROAD, FITZROY NORTH
ELECTRICAL	
HYDRAULIC & FIRE	
QUANTITY SURVEYOR	
BUILDING SURVEYOR	
PLANNING AUTHORITY	YARRA CITY COUNCIL

CLIENT	CLIENT
ANTONIO CALABRO	

DRAWING	PROPOSED FLOOR PLAN
DRAWN BY	JOB NO.
DATE	SCALE
	CHECKED
	AS NOTED @ A2
	EDITION
	SHEET NO.
	WD100

ABBREVIATIONS

±	DENOTES CENTRELINE
A/C	AIR CONDITIONER UNIT
AFFL	ABOVE FINISH FLOOR LEVEL
BP	BORER PIER
CKT	COOK TOP
COOL	COOLING
CONC	CONCRETE
COOS	CHECK ON SITE
DB	DISTRIBUTION BOARD
DP-WT	DOWNPIPE TO WATER TANK
DW	DISHWASHER
FHR	FIRE HYDRANT
FHR	FIRE HOSE REEL
FW	FLOOR WASTE GULLY
GI	GRATED INLET
HW	HOT WATER UNIT
L.DRY	LAUNDRY / LAUNDRY CABINET
MP	MAIN PANEL
MSSB	MAIN SWITCHBOARD
O/E	OVERFLOW
RC	ROOF EXHAUST DISCHARGE CONVL
REF	REFRIGERATION
REB	REBAR
ROBE	BUILT-IN ROBE
RHW	RAINWATER HEADER
RWD	RAINWATER OUTLET
S/D	STORM WATER DRAINAGE
SP	SPREADER
SP	TO BE CONFIRMED
TBC	TUNISH
TD	TACTILE GROUND SURFACE INDICATOR
TGSI	WASHING MACHINE
WMI	

ELECTRICAL LEGEND

△	SINGLE GPO AT 300 AFFL. TYPICAL. AND AT 2000 AFFL. FOR RANGEROOD
△	DOUBLE GPO AT 300 AFFL. UNO
△	DOUBLE GPO WITH ISOLATOR SWITCH FOR OVEN AT 600 AFFL. UNO
△	WEATHER-PROOF DOUBLE GPO AT 300 AFFL. & UNO
△	DOUBLE GPO AT 200 ABOVE BENCHTOP / VANITY / LAUNDRY TROUGH UNO
△	BROADBAND / TELEPHONE CONNECTION SOCKET AT 300 AFFL. UNO
△	AUDIO VISUAL INTERCOM AT 150 AFFL. UNO
△	TELEVISION SERIAL CONNECTION SOCKET MOUNTED AT 300 AFFL. UNO

ELECTRICAL NOTES

- REFER TO THE BUILDING SERVICES DRAWINGS, DETAIL & SPECIFICATIONS FOR ADDITIONAL INFORMATION RELATING TO THE POWER, COMMUNICATION SECURITY SERVICES ETC.
- REFER TO THE DETAILED JOINERY DRAWINGS FOR THE APPROPRIATE PLACEMENT OF ALL OUTLETS INCLUDING MOUNTING HEIGHTS & STRIP LIGHTING
- REFER TO THE REQUIREMENTS SPECIFIED BY THE CABLEMAN FOR DETAILS RELATING TO HOME AUTOMATION, AUDIO VISUAL, HOME ENTERTAINMENT, SECURITY, VIDEO & INTERCOM WORKS
- THESE DRAWINGS TO BE CO-ORDINATED WITH ALL CONSULTANT DRAWINGS

CEILING LEGEND

Fl	FEATURE PENDANT LIGHT 01
P.L	PENDANT LIGHT 02
Fl	LED DOWNLIGHTS TRACK MOUNTED
Fl	LED STRIP LIGHTING TO UNDERSIDE OF O/HEAD SHELF
Fl	LED DOWNLIGHTS TRACK MOUNTED
Ext	EXTERIOR SPOTLIGHT

CEILING NOTES

- CEILING HEIGHT AS NOTED
- EXTRACTION FAN, REFER TO ENGINEERS DRAWINGS SMOKE DETECTORS TO AS3786 HARD WIRE TO SWITCHBOARD & BATTERY BACKUP.
- BAND BEAMS WITH TIMBER CLADDING

WALLS LEGEND

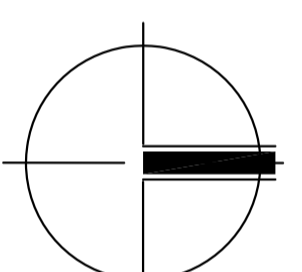
◁IW01▷	EXISTING WALL WITH STUCCO FINISH
◁IW02▷	EXISTING WALL WITH MURAL FINISH
◁IW03▷	PROPOSED NEW STUD WALL WITH STUCCO FINISH
◁IW04▷	MARBLE FINISH TO EXISTING EXTERNAL WALL, SEE WD300 FOR DETAIL.

PRELIMINARY DESIGN REVIEW

DRAWING	
PROPOSED FLOOR PLAN WITH LIQUOR LICENCE AREAS	CHECKED
DRAWN BY	JOB NO.
RK	SAC-14815
DATE	AS NOTED @ A2
19.02.2016	AC
	SHEET NO.
	A
	WD101

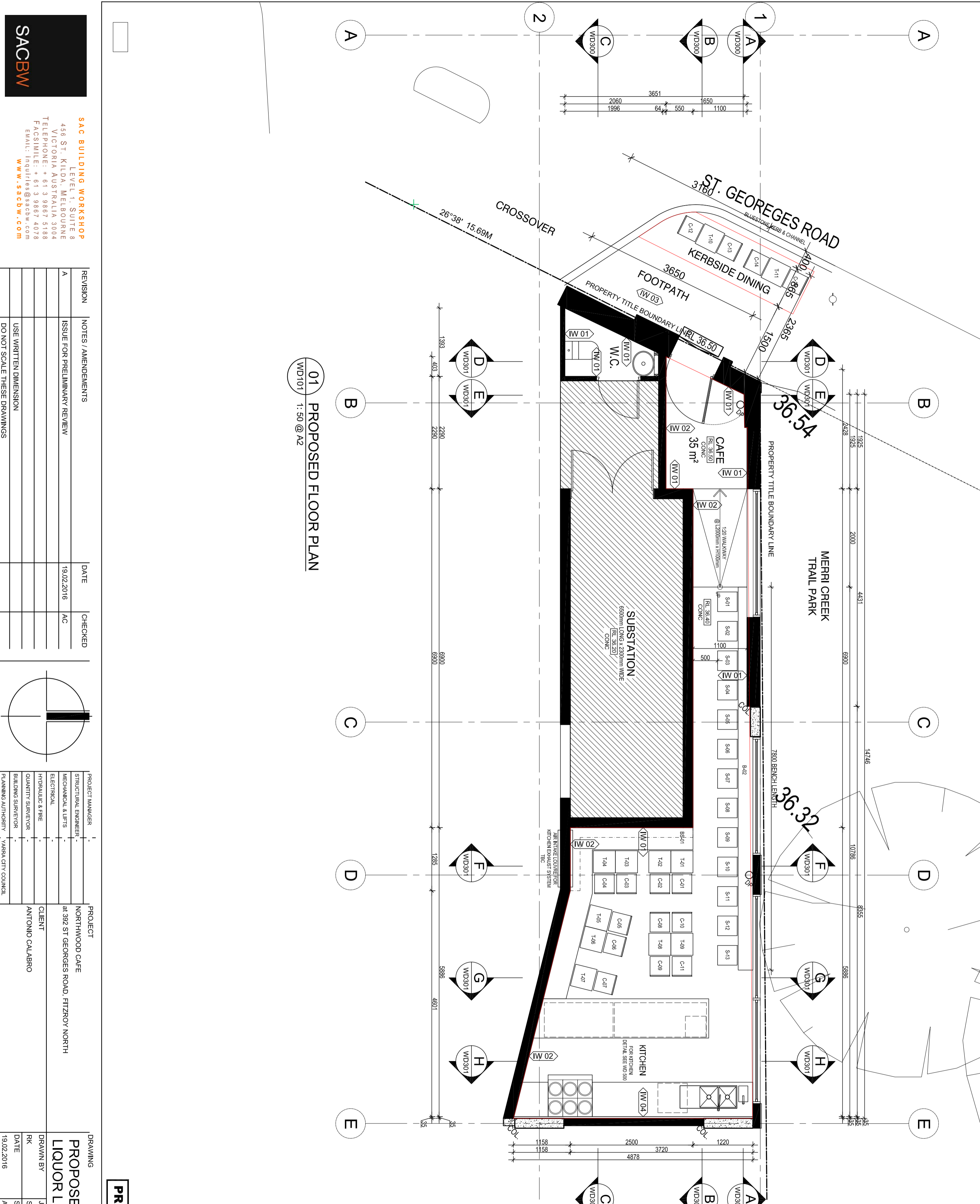
PROJECT MANAGER	
STRUCTURAL ENGINEER	
MECHANICAL & LIFTS	
ELECTRICAL	
HYDRAULIC & FIRE	
QUANTITY SURVEYOR	
BUILDING SURVEYOR	
PLANNING AUTHORITY	YARRA CITY COUNCIL

PROJECT	
NORTHWOOD CAFE	
at 392 ST GEORGES ROAD, FITZROY NORTH	
CLIENT	
ANTONIO CALABRO	



REVISION	NOTES / AMENDMENTS	DATE	CHECKED
A	ISSUE FOR PRELIMINARY REVIEW	19.02.2016	AC

SAC BUILDING WORKSHOP
LEVEL 1, SUITE 8
456 ST. KILDA, MELBOURNE
VICTORIA AUSTRALIA 3004
TELEPHONE: + 61 3 9867 5188
FACSIMILE: + 61 3 9867 4078
EMAIL: inquiries@sacbw.com
W.W.SACBW.COM



ABBREVIATIONS

† DENOTES CENTRELINE

AC	AIR CONDITIONER UNIT
AFL	ABOVE FINISH FLOOR LEVEL
BP	BORER PIER
CKT	COOK TOP
COL	COLUMN
CONC	CONCRETE
COS	CHECK ON SITE
DB	DISTRIBUTION BOARD
DP-WT	DOWNPIPE TO WATER TANK
DW	DISHWASHER
FH	FIRE HYDRANT
FHR	FIRE HOSE REEL
FW	FLOOR WASTE GULLY
GI	GRADED INLET
HW	HOT WATER UNIT
LDRY	LAUNDRY / LAUNDRY CABINET
MP	METER PANEL
MSSB	MAIN SWITCHBOARD
O/F	OVERFLOW
RC	ROOF EXHAUST DISCHARGE CONVL
REF	REFRIGERATION
ROBE	BUILT-IN ROBE
RWH	RAINWATER HEADER
RWO	RAINWATER OUTLET
RWD	ROOF WATER DRAINAGE
SPR	SPREADER
SP	TO BE CONFIRMED
TBC	TUNISH
TD	TACTILE GROUND SURFACE INDICATOR
TGSI	WASHING MACHINE
WM	

ELECTRICAL LEGEND

SING. GPO AT 300 AFL. TYPICAL AND AT 2000 AFL. FOR RANGEHOOD
DOUBLE GPO WITH ISOLATOR SWITCH FOR OVEN AT 600 AFL. UNO
WEATHER-PROOF DOUBLE GPO AT 300 AFL. & UNO TROUGH UNO
BROADBAND / TELEPHONE CONNECTION SOCKET AT 300 AFL. UNO
AUDIO VISUAL INTERCOM AT 150 AFL. UNO
TELEVISION SERIAL CONNECTION SOCKET MOUNTED AT 300 AFL. UNO

ELECTRICAL NOTES

- REFER TO THE BUILDING SERVICES DRAWINGS, DETAILS & SPECIFICATIONS FOR ADDITIONAL INFORMATION RELATING TO THE POWER, COMMUNICATION SECURITY SERVICES ETC. REFER TO THE DETAILED JOINERY DRAWINGS FOR THE ACCURATE PLACEMENT OF ALL OUTLETS INCLUDING MOUNTING HEIGHTS & STRIP LIGHTING.
- REFER TO THE REQUIREMENTS SPECIFIED BY THE 'CABLEMAN' FOR DETAILS RELATING TO HOME AUTOMATION, AUDIOVISUAL, HOME ENTERTAINMENT, SECURITY, VIDEO & INTERCOM WORKS.
- THESE DRAWINGS TO BE CO-ORDINATED WITH ALL CONSULTANT DRAWINGS.

CEILING LEGEND

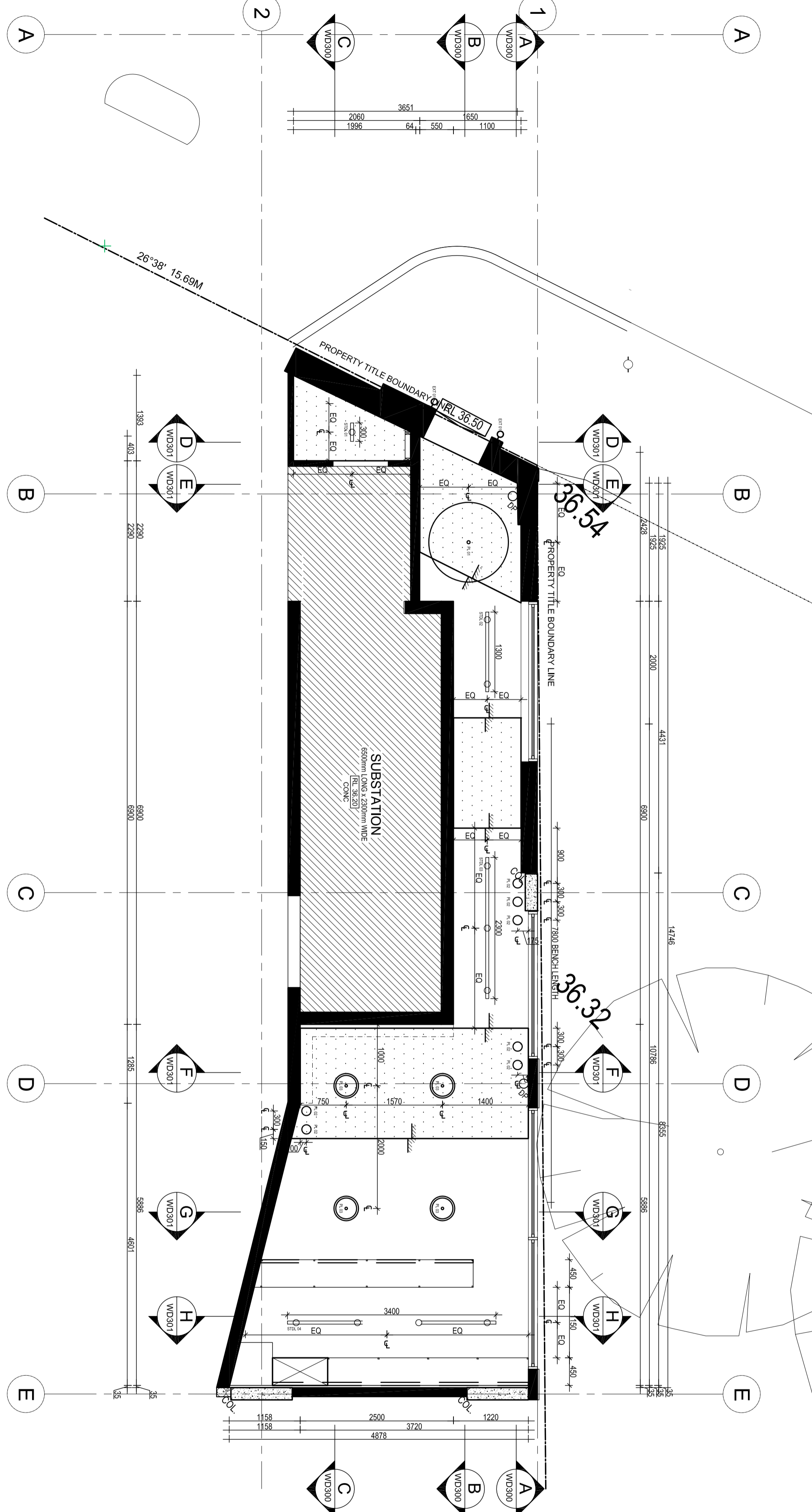
FEATURE PENDANT LIGHT 01
PENDANT LIGHT 02
LED STRIP LIGHTING TO UNDERSIDE OF O/HEAD SHELF
LED DOWNLIGHTS TRACK MOUNTED
EXTERIOR SPOTLIGHT

CEILING NOTES

- CEILING HEIGHTS AND LEVELS NOMINATED ARE FINISHED LEVELS.
- USE WATER RESISTANT PLASTER BOARD IN WET AREAS.
- REFER TO SERVICES ENGINEERS DRAWINGS FOR ALL DETAILS RELATING TO SMOKE DETECTORS, ACCESS PANELS, MECHANICAL SUPPLY & RETURN GRILLES, SPEAKERS ETC.
- REFER TO ELECTRICAL SERVICE DRAWINGS FOR THE LOCATION OF LOW LEVEL & FLOOR MOUNTED LIGHTING.

WALLS LEGEND

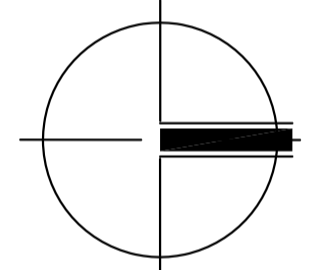
EXISTING WALL WITH STUCCO FINISH
EXISTING WALL WITH MURAL FINISH
PROPOSED NEW STUD WALL WITH STUCCO FINISH
MARBLE FINISH TO EXISTING EXTERNAL WALL. SEE WDS20 FOR DETAIL.



01 PROPOSED REFLECTED CEILING PLAN

WD110 1:50 @ A2

REVISION	NOTES / AMENDMENTS	DATE	CHECKED
A	ISSUE FOR PRELIMINARY REVIEW	19.02.2016	AC



PROJECT		CLIENT	
PROJECT MANAGER	STRUCTURAL ENGINEER	NORTHWOOD CAFE	ANTONIO CALABRO
MECHANICAL & LIFTS	ELECTRICAL	at 392 ST GEORGES ROAD, FITZROY NORTH	
HYDRAULIC & FIRE	QUANTITY SURVEYOR		
BUILDING SURVEYOR	PLANNING AUTHORITY		YARRA CITY COUNCIL

DRAWING		JOB NO.	
PROPOSED REFLECTED CEILING PLAN	DRAWN BY	SAC-14815	AS NOTED @ A2
	DATE	19.02.2016	A2
	CHECKED	AC	SHEET NO.
	SCALE	A	WD110

PRELIMINARY DESIGN REVIEW

SAC BUILDING WORKSHOP

LEVEL 1, SUITE 8
456 ST. KILDA, MELBOURNE
VICTORIA AUSTRALIA 3004
TELEPHONE: + 61 3 9867 5188
FACSIMILE: + 61 3 9867 4078
EMAIL: inquiries@sacb.w.com
www.sacb.w.com

COPYRIGHT © ANTONIO MARCO CALABRO FROM 2013

ABBREVIATIONS

±	DENOTES CENTRELINE
A/C	AIR CONDITIONER UNIT
AFFL	ABOVE FINISH FLOOR LEVEL
BP	BORDED PIER
CKT	COOKTOP
COL	COLUMN
CONC	CONCRETE
COO	CHECK ON SITE
DB	DISTRIBUTION BOARD
DP	DOWNPIPE
DP-WT	DOWNPIPE TO WATER TANK
DW	DISHWASHER
FH	FIRE HYDRANT
FHR	FIRE HOSE REEL
FW	FLOOR WASTE GULLY
GI	GRADED INLET
HW	HOT WATER UNIT
L.DRY	LAUNDRY / LAUNDRY CABINET
MP	MAIN PANEL
MSS	MAIN SWITCHBOARD
O/E	OVERFLOW
RC	ROOF EXHAUST DISCHARGE CONWL
REF	REFRIGERATION
ROBE	BUILT-IN ROBE
RH	RAINWATER HEADER
RHW	RAINWATER OUTLET
RWD	STORM WATER DRAINAGE
SP	SPREADER
SP	TO BE CONFIRMED
TBC	TUNISH
TGSI	TACTILE GROUND SURFACE INDICATOR
WM	WASHING MACHINE

ELECTRICAL LEGEND

▽	SINGLE GPO AT 300 AFFL. TYPICAL AND AT 2000 AFFL. FOR RANGEHOOD
△	DOUBLE GPO AT 300 AFFL. UNO
△	DOUBLE GPO WITH ISOLATOR SWITCH FOR OVEN AT 800 AFFL. UNO
△	WEATHER-PROOF DOUBLE GPO AT 300 AFFL. & UNO
△	DOUBLE GPO AT 200/800/IEBENCHTOP/ VANTY/ LAUNDRY TROUGH UNO
△	BROADBAND / TELEPHONE CONNECTION SOCKET AT 300 AFFL. UNO
△	AUDIO VISUAL INTERCOM AT 1350 AFFL. UNO
△	TELEVISION MERIAL CONNECTION SOCKET MOUNTED AT 300 AFFL. UNO

ELECTRICAL NOTES

- REFER TO THE BUILDING SERVICES DRAWINGS, DETAIL & SPECIFICATIONS FOR ADDITIONAL INFORMATION RELATING TO THE POWER, COMMUNICATION SECURITY SERVICES ETC.
- REFER TO THE DETAILED JOINERY DRAWINGS FOR THE ACCURATE PLACEMENT OF ALL OUTLETS INCLUDING MOUNTING HEIGHTS & STRIP LIGHTING
- REFER TO THE REQUIREMENTS SPECIFIED BY THE 'CABLEMAN' FOR DETAILS RELATING TO HOME AUTOMATION, AUDIOVISUAL, HOME ENTERTAINMENT, SECURITY, VIDEO & INTERCOM WORKS
- THESE DRAWINGS TO BE CO-ORDINATED WITH ALL CONSULTANT DRAWINGS

CEILING LEGEND

Fl	FEATURE PENDANT LIGHT 01
Fl	PENDANT LIGHT 02
Fl	LED STRIP LIGHTING TO UNDERSIDE OF O/HEAD SHELF
Fl	LED DOWNLIGHTS TRACK MOUNTED
Ext	EXTERIOR SPOTLIGHT

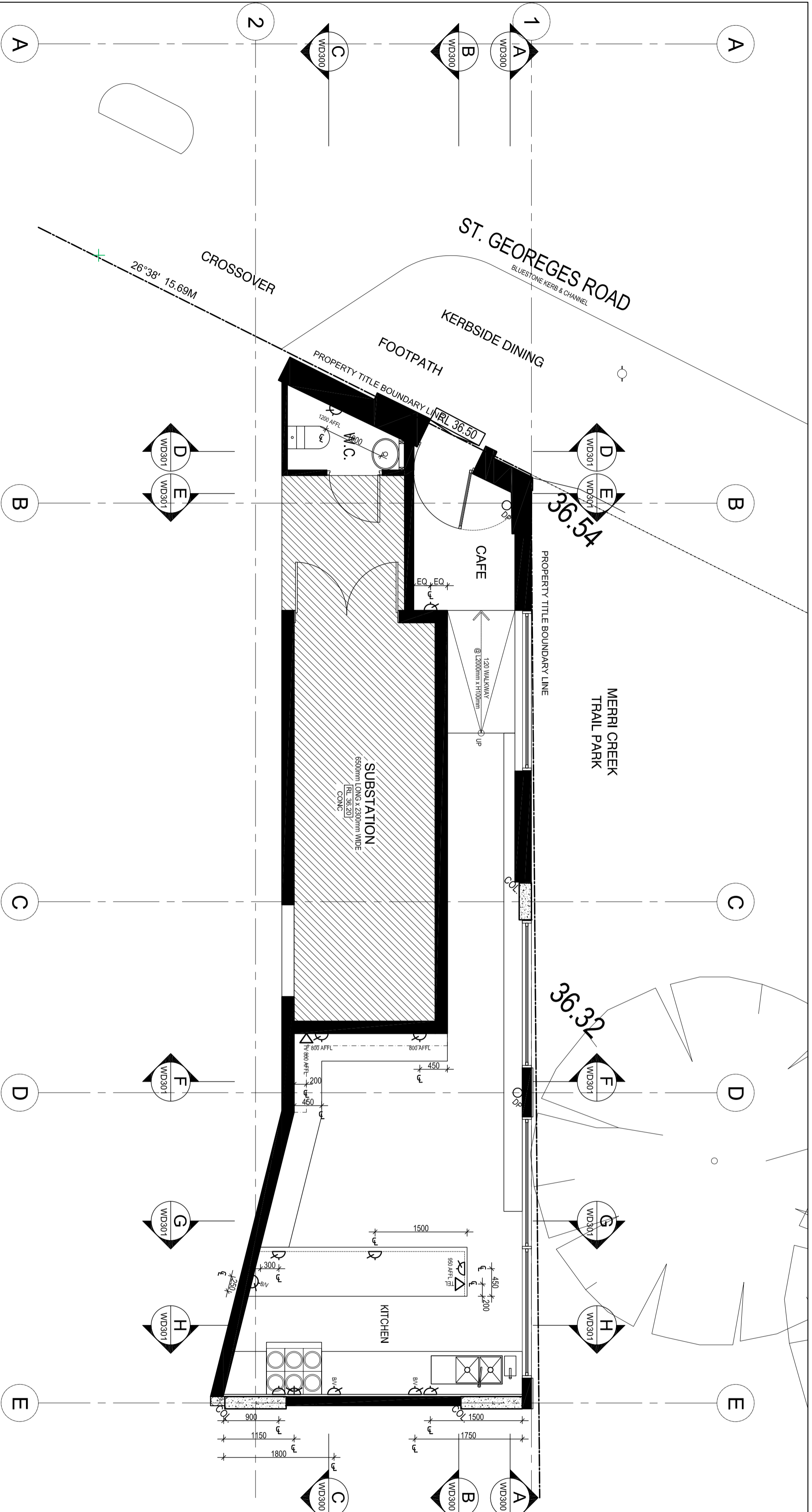
CEILING NOTES

- CEILING HEIGHT AS NOTED
- EXTRACTION FAN, REFER TO ENGINEERS DRAWINGS FOR DETAIL
- SMOKE DETECTORS TO AS3786 HARD WIRE TO SWITCHBOARD & BATTERY BACKUP.
- BAND BEAMS WITH TIMBER CLADDING

WALLS LEGEND

◁(W)01	EXISTING WALL WITH STUCCO FINISH
◁(W)02	EXISTING WALL WITH MURAL FINISH
◁(W)03	PROPOSED NEW STUD WALL WITH STUCCO FINISH
◁(W)04	MARBLE FINISH TO EXISTING EXTERNAL WALL. SEE WDS30 FOR DETAIL.

PRELIMINARY DESIGN REVIEW



01 PROPOSED ELECTRICAL PLAN
WD111 1:50 @ A2

SAC BUILDING WORKSHOP
LEVEL 1, SUITE 8
456 ST. KILDA, MELBOURNE
VICTORIA AUSTRALIA 3004
TELEPHONE: + 61 3 9867 5188
FACSIMILE: + 61 3 9867 4078
EMAIL: inquiries@sacb.w.com
www.sacb.w.com

REVISION	NOTES / AMENDMENTS	DATE	CHECKED
A	ISSUE FOR PRELIMINARY REVIEW	19.02.2016	AC
	USE WRITTEN DIMENSION		
	DO NOT SCALE THESE DRAWINGS		

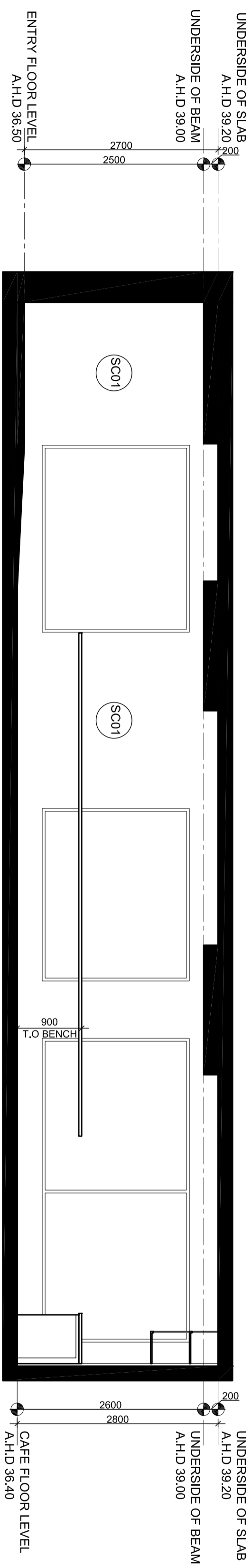
PROJECT MANAGER	PROJECT
STRUCTURAL ENGINEER	NORTHWOOD CAFE
MECHANICAL & LIFTS	at 392 ST GEORGES ROAD, FITZROY NORTH
ELECTRICAL	
HYDRAULIC & FIRE	
QUANTITY SURVEYOR	
BUILDING SURVEYOR	
PLANNING AUTHORITY	YARRA CITY COUNCIL

CLIENT	DRAWING
ANTONIO CALABRO	JOB NO. SAC-14815
	SCALE AS NOTED @ A2
	CHECKED AC
	EDITION SHEET NO. A
	DATE 19.02.2016
	SHEET SIZE A2

PROPOSED ELECTRICAL PLAN

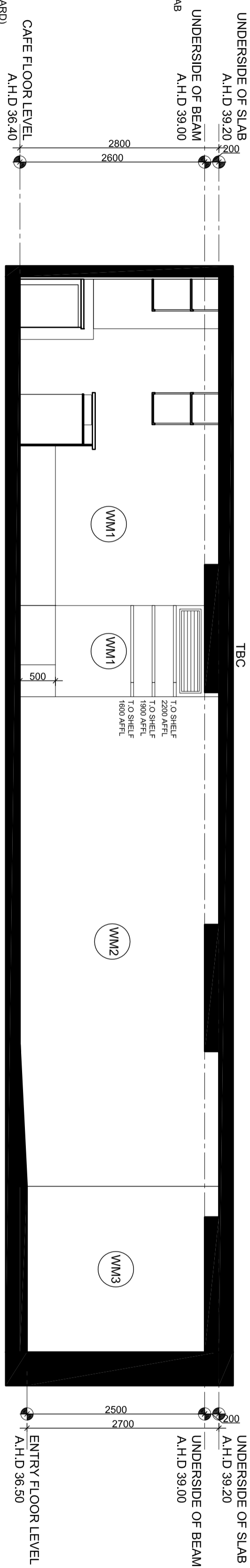
PROJECT MANAGER	PROJECT
STRUCTURAL ENGINEER	NORTHWOOD CAFE
MECHANICAL & LIFTS	at 392 ST GEORGES ROAD, FITZROY NORTH
ELECTRICAL	
HYDRAULIC & FIRE	
QUANTITY SURVEYOR	
BUILDING SURVEYOR	
PLANNING AUTHORITY	YARRA CITY COUNCIL

- WM1 WALL MURAL 01
'GIRLS ON VESPAS'
- WM2 WALL MURAL 02
YELLOW FLAT
- WM3 WALL MURAL 03
RED SKIRT
- SC01 STUCCO FINISH 01
- ST01 STONE 01
'CARRARRA MARBLE'
- ST02 STONE 02
- TF01 TIMBER FINISH 01
BLACK LAMINATE
(KITCHEN CUPBOARDS)
- TF02 TIMBER FINISH 02
(WINDOW BENCH
AND BENCH SEATS)
- TF03 TIMBER FINISH 03
TABLETOPS



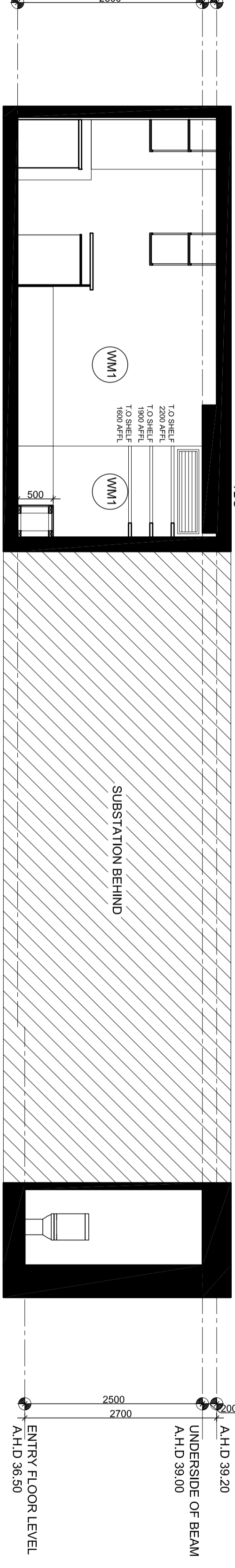
01 SECTION A-A
WD300 1:50 @ A2

- CF01 CONCRETE FINISH
CONCRETE FLOOR
- CF02 CONCRETE FINISH
EXPOSED CONCRETE SLAB
(AS CEILING)
- MF01 METAL FINISH 01
BLACK METAL FRAMING
- MF02 METAL FINISH 02
COPPER PIPE DETAILING
- MF03 METAL FINISH 03
STAINLESS STEEL
(BENCHTOP AND KICKBOARD)
- MF04 METAL FINISH 04
PRESSED METAL IN BLACK



02 SECTION B-B
WD300 1:50 @ A2

- UNDERSIDE OF SLAB
A.H.D 39.20
- UNDERSIDE OF BEAM
A.H.D 39.00
- CAFE FLOOR LEVEL
A.H.D 36.40



03 SECTION C-C
WD300 1:50 @ A2

ABBREVIATIONS

- ± DENOTES CENTRELINE
- A/C AIR CONDITIONER UNIT
- APFL ABOVE FINISH FLOOR LEVEL
- BP BOBBED PER
- CKT COUNCIL
- COOL COOLING
- CONC CONCRETE
- COOS CHECK OUTSIDE
- DB DISTRIBUTION BOARD
- DP-WT DOWNPIPE TO WATER TANK
- DW DISHWASHER
- FH FIRE HYDRANT
- FHR FIRE HOSE REEL
- FI FLOOR WASTE GULLY
- GI GRATED INLET
- HW HOT WATER UNIT
- LDRY LAUNDRY / LAUNDRY CABINET
- MP METER PANEL
- MS58 MAIN SWITCHBOARD
- OC OVERFLOW
- RC ROOF EXHAUST DISCHARGE CONWL
- REF REFRIGERATION
- ROBE BUILT-IN ROBE
- RHW RAINWATER HEADER
- RWO RAINWATER OUTLET
- SWD STORM WATER DRAINAGE SPREADER
- SP TO BE CONFIRMED
- TBC TUNISH
- TD TACTILE
- TGSI TACTILE GROUND SURFACE INDICATOR
- WMI WASHING MACHINE

ELECTRICAL LEGEND

- △ SINGLE GPO AT 300 AFL UNO
- ▽ DOUBLE GPO AT 300 AFL TYPICAL AND AT 2000 AFL FOR RANGEHOOD
- ⊠ DOUBLE GPO WITH ISOLATOR SWITCH FOR OVEN AT 600 AFL UNO
- ⊡ WEATHERPROOF DOUBLE GPO AT 300 AFL & UNO
- ⊞ TROUGH UNO
- ⊟ BROADCAST / TELEPHONE CONNECTION SOCKET AT 300 AFL UNO
- ⊠ AUDIO VISUAL INTERCOM AT 150 AFL UNO
- ⊡ TELEVISION AERIAL CONNECTION SOCKET MOUNTED AT 300 AFL UNO

ELECTRICAL NOTES

- REFER TO THE BUILDING SERVICES DRAWINGS DETAIL & SPECIFICATIONS FOR ADDITIONAL INFORMATION RELATING TO THE POWER, COMMUNICATION SECURITY SERVICES ETC.
- REFER TO THE DETAILED JOINERY DRAWINGS FOR THE APPROPRIATE PLACEMENT OF ALL OUTLETS INCLUDING MOUNTING HEIGHTS & STRIP LIGHTING
- REFER TO THE REQUIREMENTS SPECIFIED BY THE CABINETMAN FOR DETAILS RELATING TO HOME AUTOMATION, AUDIOVISUAL, HOME ENTERTAINMENT, SECURITY, VIDEO & INTERCOM WORKS
- THESE DRAWINGS TO BE CO-ORDINATED WITH ALL CONSULTANT DRAWINGS

CEILING LEGEND

- ⊙ FEATURE PENDANT LIGHT 01
- ⊙ PENDANT LIGHT 02
- ⊙ LED STRIP LIGHTING TO UNDERSIDE OF O/HEAD SHELF
- ⊙ LED DOWNLIGHTS TRACK MOUNTED
- ⊙ EXTERIOR SPOTLIGHT

CEILING NOTES

- CEILING HEIGHT AS NOTED
- EXTRACTION FAN, REFER TO ENGINEERS DRAWINGS
- SMOKE DETECTORS TO AS3786 HARD WIRE TO SWITCHBOARD & BATTERY BACKUP.
- BAND BEAMS WITH TIMBER CLADDING

CEILING NOTES

- CEILING HEIGHTS AND LEVELS NOMINATED ARE FINISHED LEVELS
- USE WATER RESISTANT PLASTER BOARD IN WET AREAS
- REFER TO SERVICES ENGINEERS DRAWINGS FOR ALL DETAILS RELATING TO SMOKE DETECTORS, ACCESS PANELS, MECHANICAL SUPPLY & RETURN GRilles, SPEAKERS ETC.
- REFER TO ELECTRICAL SERVICES DRAWINGS FOR THE LOCATION OF LOW LEVEL & FLOOR MOUNTED LIGHTING.

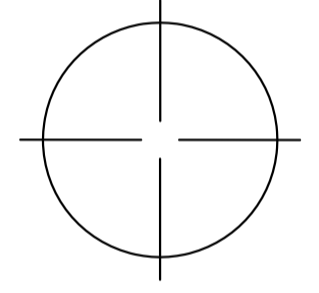
WALLS LEGEND

- ◀(W1)◀ EXISTING WALL WITH STUCCO FINISH
- ◀(W2)◀ EXISTING WALL WITH MURAL FINISH
- ◀(W3)◀ PROPOSED NEW STUD WALL WITH STUCCO FINISH
- ◀(W4)◀ MARBLE FINISH TO EXISTING EXTERNAL WALL, SEE WDS00 FOR DETAIL.

PRELIMINARY DESIGN REVIEW

SAC BUILDING WORKSHOP
LEVEL 1, SUITE 8
456 ST. KILDA, MELBOURNE
VICTORIA AUSTRALIA 3004
TELEPHONE: + 61 3 9867 5188
FACSIMILE: + 61 3 9867 4078
EMAIL: inquiries@sacbw.com
www.sacbw.com

REVISION	NOTES / AMENDMENTS	DATE	CHECKED
A	ISSUE FOR PRELIMINARY REVIEW	19.02.2016	AC
	USE WRITTEN DIMENSION		
	DO NOT SCALE THESE DRAWINGS		

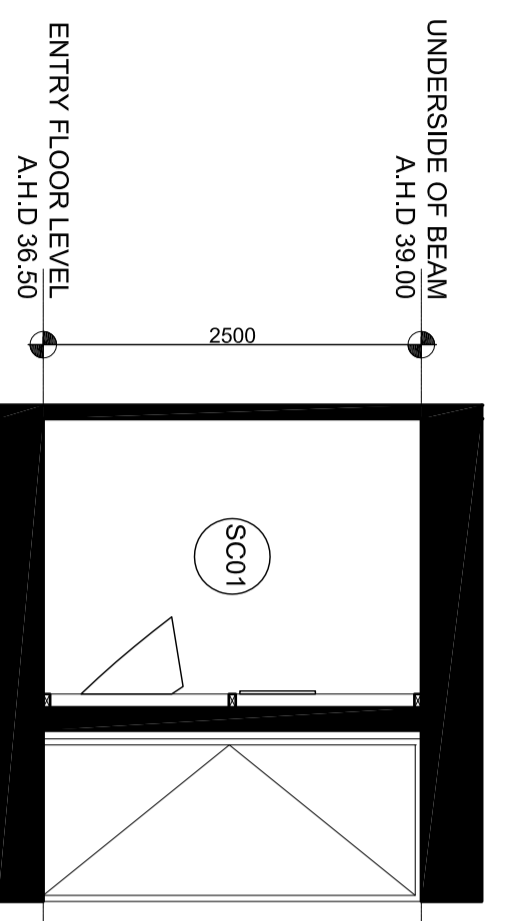


PROJECT MANAGER	CLIENT
STRUCTURAL ENGINEER	ANTONIO CALABRO
MECHANICAL & LIFTS	
ELECTRICAL	
HYDRAULIC & FIRE	
QUANTITY SURVEYOR	
BUILDING SURVEYOR	
PLANNING AUTHORITY	YARRA CITY COUNCIL

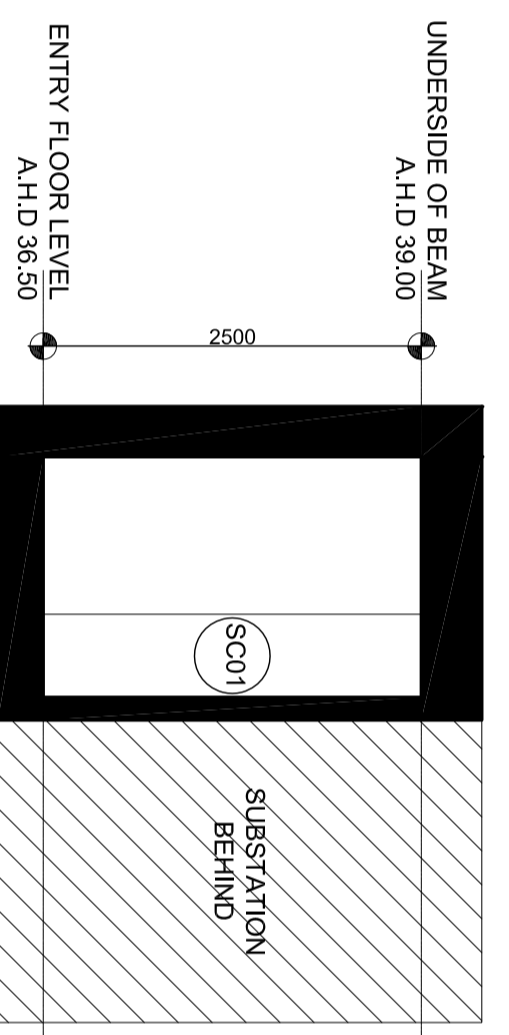
PROJECT
NORTHWOOD CAFE
at 392 ST GEORGES ROAD, FITZROY NORTH

DRAWING		JOB NO.	
PROPOSED SECTIONS		SAC-14815	
A-A, B-B & C-C		AS NOTED @ A2	
DRAWN BY	AC	CHECKED	AC
DATE	19.02.2016	SHEET NO.	A
			WD300

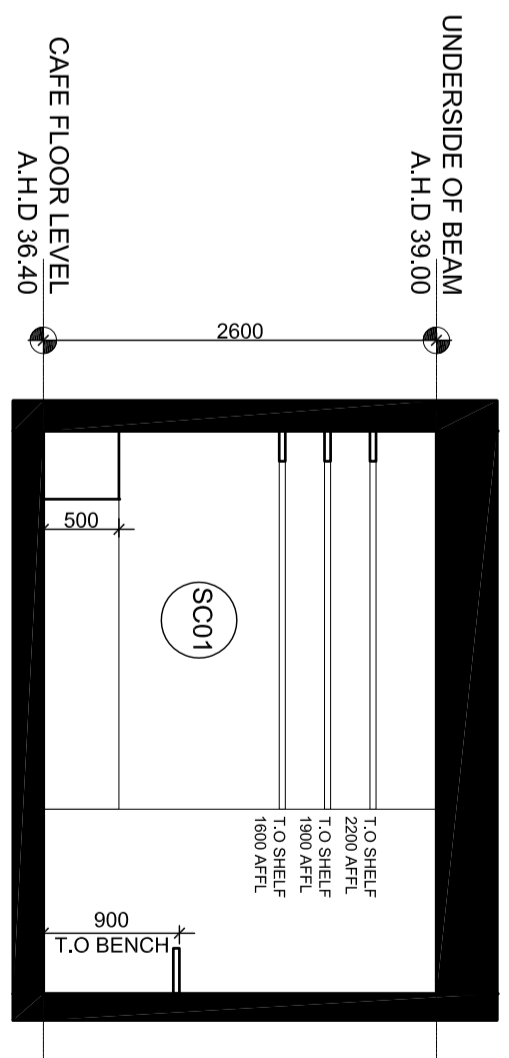
- WM1 WALL MURAL 01
'GIRLS ON VESPAS'
- WM2 WALL MURAL 02
YELLOW FLAT
- WM3 WALL MURAL 03
RED SKIRT
- SC01 STUCCO FINISH 01
- ST01 STONE 01
CARRARA MARBLE
- ST02 STONE 02
STONE BENCHTOP
- TF01 TIMBER FINISH 01
BLACK LAMINATE
(KITCHEN CUPBOARDS)
- TF02 TIMBER FINISH 02
(WINDOW BENCH
AND BENCH SEATS)
- TF03 TIMBER FINISH 03
TABLETOPS
- CF01 CONCRETE FINISH
CONCRETE FLOOR
- CF02 CONCRETE FINISH
EXPOSED CONCRETE SLAB
(AS CEILING)
- MF01 METAL FINISH 01
BLACK METAL FRAMING
- MF02 METAL FINISH 02
COPPER PIPE DETAILING
- MF03 METAL FINISH 03
STAINLESS STEEL
(BENCHTOP AND KICKBOARD)
- MF04 METAL FINISH 04
PRESSED METAL IN BLACK



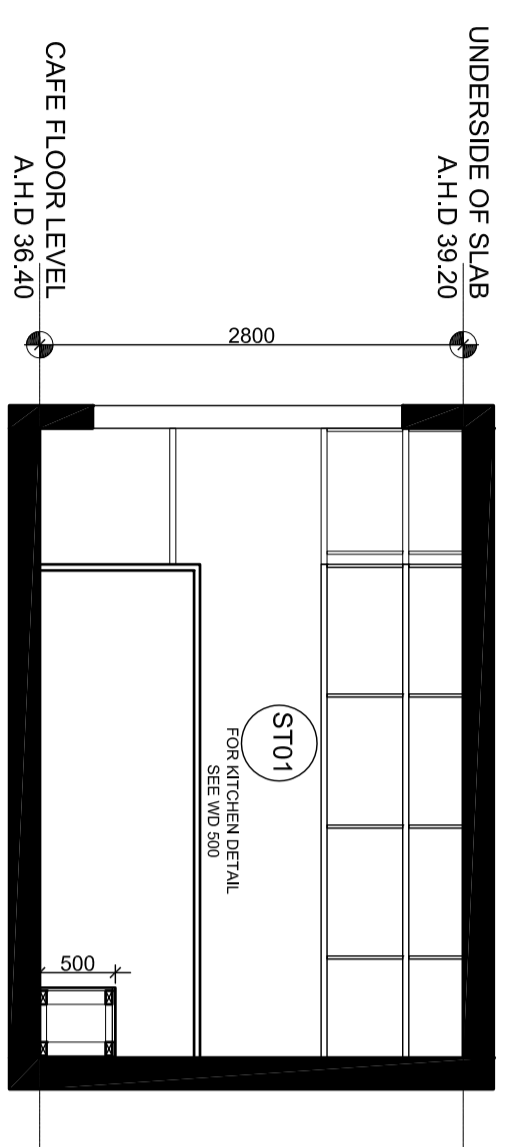
01 SECTION D-D
WD301 1:50



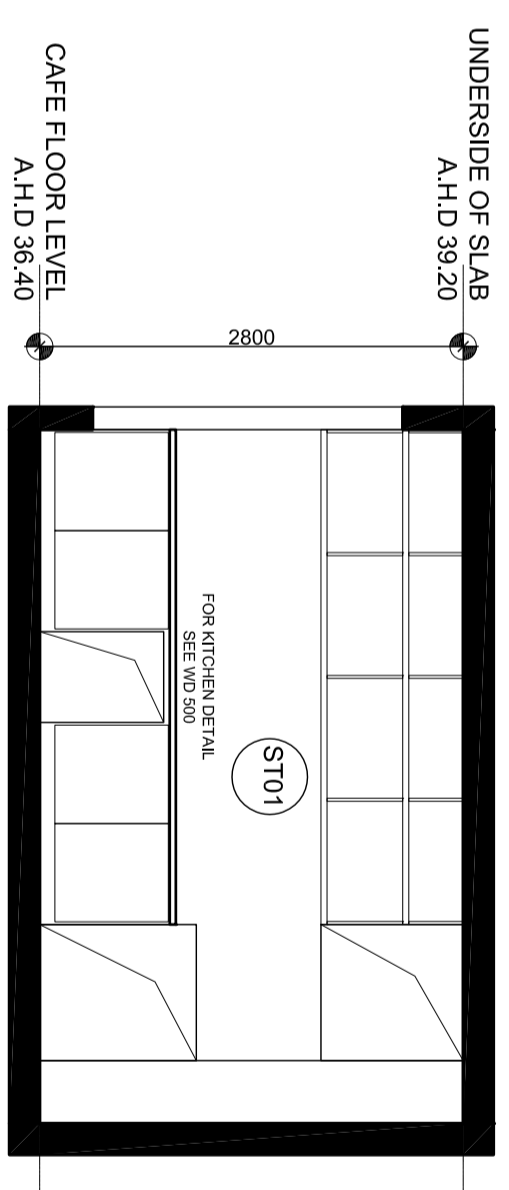
02 SECTION E-E
WD301 1:50



03 SECTION F-F
WD301 1:50



04 SECTION G-G
WD301 1:50



05 SECTION H-H
WD301 1:50

ABBREVIATIONS

- ‡ DENOTES CENTRELINE
- A/C AIR CONDITIONER UNIT
- AFL ABOVE FINISH FLOOR LEVEL
- BP BORED PIER
- CKT COOKTOP
- COL COLUMN
- CONC CONCRETE
- COOS CHECK ON SITE
- DB DISTRIBUTION BOARD
- DP DOWNPIPE
- DP-WT DOWNPIPE TO WATER TANK
- DW DISHWASHER
- FH FIRE HYDRANT
- FHR FIRE HOSE REEL
- FW FLOOR WASTE GULLY
- GI GRATED INLET
- HW HOT WATER UNIT
- LDRY LAUNDRY / LAUNDRY CABINET
- METER METER PANEL
- MP MAIN SWITCHBOARD
- MSSB OVERFLOW
- O/E ROOF EXHAUST DISCHARGE CONVL
- REF REFRIGERATION
- ROBE BUILT-IN ROBE
- RHW RAINWATER HEADER
- RWD RAINWATER OUTLET
- SP S/D STORM WATER DRAINAGE SPREADER
- SP TO BE CONFORMED
- TBC TUNDISH
- TD TACTILE GROUND SURFACE INDICATOR
- TGSI TONGUE AND GROOVE
- WMI WASHING MACHINE

ELECTRICAL LEGEND

- ▷ SINGLE GPO AT 300 AFL. TYPICAL. AND AT 2000 AFL FOR RANGEHOOD
- ▷ DOUBLE GPO AT 300 AFL. UNO
- ▷ WEATHER-PROOF DOUBLE GPO AT 200 AFL & UNO
- ▷ TROUGH UNO
- ▷ BROADBAND / TELEPHONE CONNECTION SOCKET AT 300 AFL. UNO
- ▷ AUDIO VISUAL INTERCOM AT 150 AFL. UNO
- ▷ TELEVISION AERIAL CONNECTION SOCKET MOUNTED AT 300 AFL. UNO

ELECTRICAL NOTES

- REFER TO THE BUILDING SERVICES DRAWINGS, DETAILS & SPECIFICATIONS FOR ADDITIONAL INFORMATION RELATING TO THE POWER, COMMUNICATION SECURITY SERVICES ETC.
- REFER TO THE DETAILED JOINERY DRAWINGS FOR THE ACCURATE PLACEMENT OF ALL OUTLETS INCLUDING MOUNTING HEIGHTS & STRIP LIGHTING
- REFER TO THE REQUIREMENTS SPECIFIED BY THE 'CABLEMAN' FOR DETAILS RELATING TO HOME AUTOMATION, AUDIOVISUAL, HOME ENTERTAINMENT, SECURITY, VIDEO & INTERCOM WORKS
- THESE DRAWINGS TO BE CO-ORDINATED WITH ALL CONSULTANT DRAWINGS

CEILING LEGEND

- FEATURE PENDANT LIGHT 01
- PENDANT LIGHT 02
- LED DOWNLIGHTS TRACK MOUNTED
- LED DOWNLIGHTS TRACK MOUNTED
- EXTERIOR SPOTLIGHT

CEILING NOTES

- CEILING HEIGHT AS NOTED
- EXTRACTOR FAN, REFER TO ENGINEERS DRAWINGS
- SMOKE DETECTORS TO AS3786 HARD WIRE TO SWITCHBOARD & BATTERY BACKUP.
- BAND BEAMS WITH TIMBER CLADDING

CEILING NOTES

- CEILING HEIGHTS AND LEVELS NOMINATED ARE FINISHED LEVELS
- USE WATER RESISTANT PLASTER BOARD IN WET AREAS
- REFER TO SERVICES ENGINEERS DRAWINGS FOR ALL DETAILS RELATING TO SMOKE DETECTORS, ACCESS PANELS, MECHANICAL SUPPLY & RETURN GRILLES, SPEAKERS ETC.
- REFER TO ELECTRICAL SERVICES DRAWINGS FOR THE LOCATION OF LOW LEVEL & FLOOR MOUNTED LIGHTING.

WALLS LEGEND

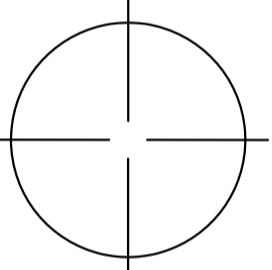
- ◁(W/01) EXISTING WALL WITH STUCCO FINISH
- ◁(W/02) EXISTING WALL WITH MURAL FINISH
- ◁(W/03) PROPOSED NEW STUD WALL WITH STUCCO FINISH
- ◁(W/04) MARBLE FINISH TO EXISTING EXTERNAL WALL. SEE WD500 FOR DETAIL.

PRELIMINARY DESIGN REVIEW

SAC BUILDING WORKSHOP

LEVEL 1, SUITE 8
456 ST. KILDA, MELBOURNE
VICTORIA AUSTRALIA 3004
TELEPHONE: + 61 3 9867 5188
FACSIMILE: + 61 3 9867 4078
EMAIL: inquiries@sacbw.com
www.sacbw.com

REVISION	NOTES / AMENDMENTS	DATE	CHECKED
A	ISSUE FOR PRELIMINARY REVIEW	19.02.2016	AC
	USE WRITTEN DIMENSION		
	DO NOT SCALE THESE DRAWINGS		

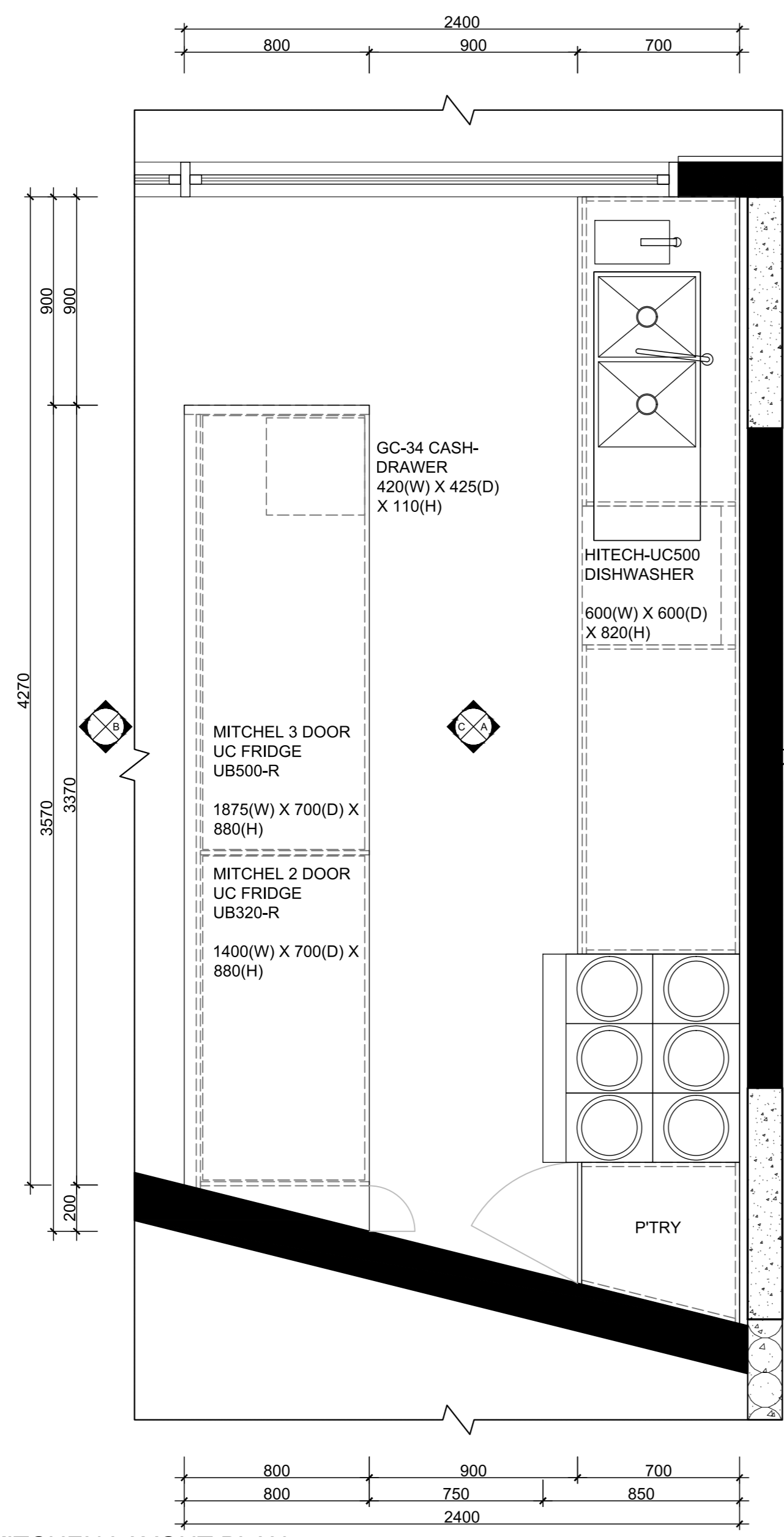


PROJECT MANAGER	PROJECT
STRUCTURAL ENGINEER	NORTHWOOD CAFE
MECHANICAL & LIFTS	at 392 ST GEORGES ROAD, FITZROY NORTH
ELECTRICAL	
HYDRAULIC & FIRE	
QUANTITY SURVEYOR	
BUILDING SURVEYOR	
PLANNING AUTHORITY	YARRA CITY COUNCIL

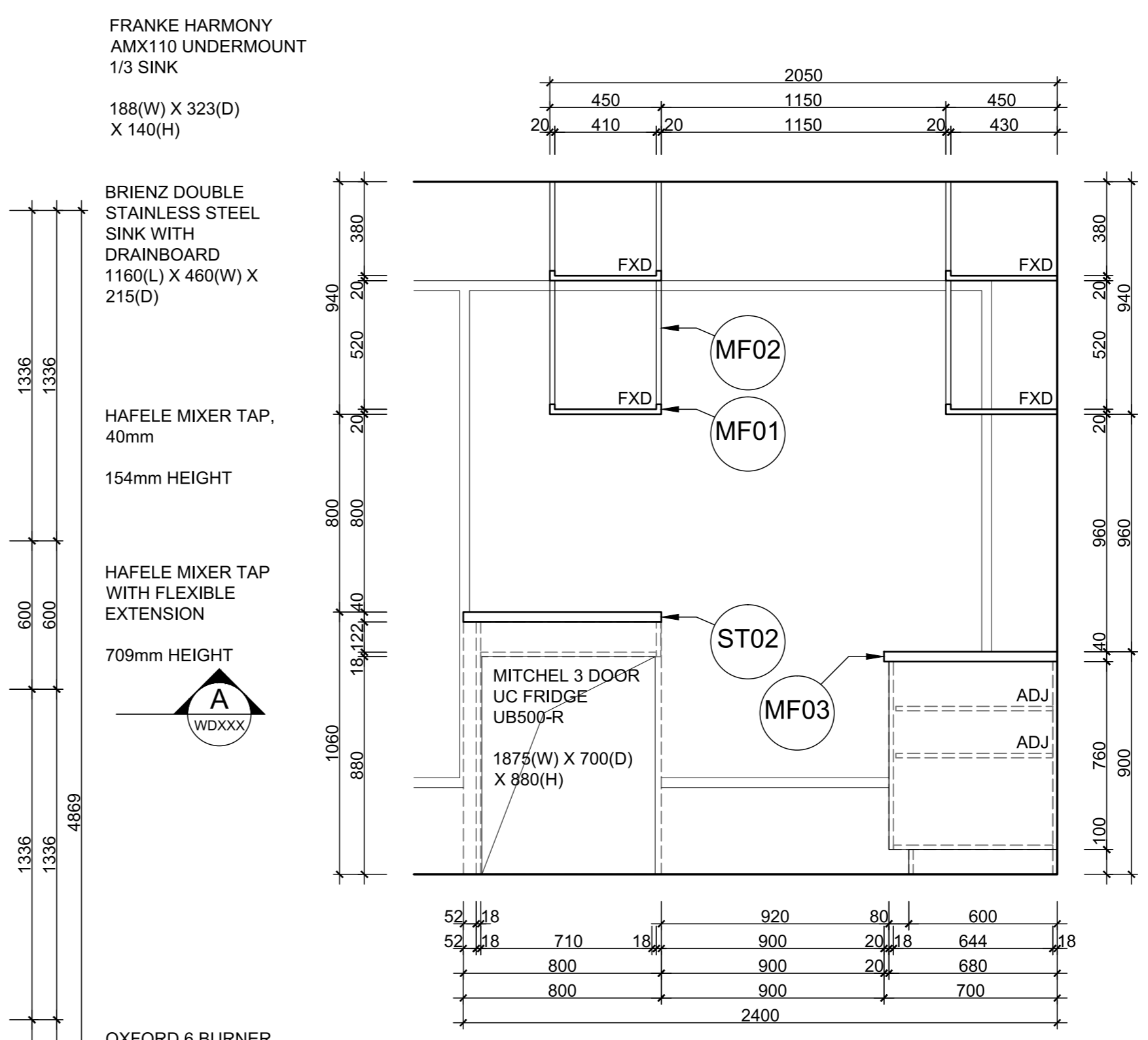
CLIENT
ANTONIO CALABRO

DRAWING		PROPOSED SECTIONS	
DRAWN BY	JK	SCALE	CHECKED
DATE	19.02.2016	AS NOTED @ A2	AC
		SHEET SIZE	SHEET NO.
		A	WD301

- WM1 WALL MURAL 01 'GIRLS ON VESPAS'
- WM2 WALL MURAL 02 'YELLOW FIAT'
- WM3 WALL MURAL 03 'RED SKIRT'
- WM4 WALL MURAL 04 'PERONI MAN'
- SC01 STUCCO FINISH 01
- ST01 STONE 01 'CARRARRA MARBLE'
- ST02 STONE 02 STONE BENCHTOP
- TF01 TIMBER FINISH 01 BLACK LAMINATE (KITCHEN CUPBOARDS)
- TF02 TIMBER FINISH 02 (WINDOW BENCH AND BENCH SEATS)
- TF03 TIMBER FINISH 03 TABLETOPS
- CF01 CONCRETE FINISH CONCRETE FLOOR
- CF02 CONCRETE FINISH EXPOSED CONCRETE SLAB (AS CEILING)
- MF01 METAL FINISH 01 BLACK METAL FRAMING
- MF02 METAL FINISH 02 COPPER PIPE DETAILING
- MF03 METAL FINISH 03 STAINLESS STEEL (BENCHTOP AND KICKBOARD)
- MF04 METAL FINISH 04 PRESSED METAL IN BLACK



01 KITCHEN LAYOUT PLAN
WD500 1: 20 @ A2



03 INTERNAL WALL TYPE 4 - DETAIL
WD500 1: 10 @ A2

ABBREVIATIONS

- ± DENOTES CENTRELINE
- A/C AIR CONDITIONER UNIT
- AFFL ABOVE FINISH FLOOR LEVEL
- BP BORED PIER
- CKT COOK-TOP
- COL COLUMN
- CONC CONCRETE
- COS CHECK ON SITE
- DB DISTRIBUTION BOARD
- DP DOWNPIPE
- DP-WT DOWNPIPE TO WATER TANK
- DW DISHWASHER
- FH FIRE HYDRANT
- FHR FIRE HOSE REEL
- FW FLOOR WASTE GULLY
- GI GRATED INLET
- HW HOT WATER UNIT
- L'DRY LAUNDRY / LAUNDRY CABINET
- MP METER PANEL
- MSSB MAIN SWITCHBOARD
- O/F OVERFLOW
- RC ROOF EXHAUST DISCHARGE COWL
- REF REFRIGERATION
- ROBE BUILT-IN-ROBE
- RWH RAINWATER HEADER
- RWO RAINWATER OUTLET
- SWD STORM WATER DRAINAGE
- SP SPREADER
- TBC TO BE CONFIRMED
- TD TUNDISH
- TGSI TACTILE GROUND SURFACE INDICATOR
- WM WASHING MACHINE

ELECTRICAL LEGEND

- ◇ SINGLE GPO AT 300 AFFL TYPICAL AND AT 2000 AFFL FOR RANGEHOOD
- ◇ DOUBLE GPO AT 300 AFFL U.N.O
- ◇ DOUBLE GPO WITH ISOLATOR SWITCH FOR OVEN AT 600 AFFL U.N.O
- ◇ WEATHER-PROOF DOUBLE GPO AT 300 AFFL & U.N.O
- ◇ DOUBLE GPO AT 300 ABOVE BENCHTOP / VANITY / LAUNDRY TROUGH U.N.O
- ◇ BROADBAND / TELEPHONE CONNECTION SOCKET AT 300 AFFL U.N.O
- ◇ AUDIO VISUAL INTERCOM AT 1350 AFFL U.N.O
- ◇ TELEVISION AERIAL CONNECTION SOCKET MOUNTED AT 300 AFFL U.N.O

ELECTRICAL NOTES

- REFER TO THE BUILDING SERVICES DRAWINGS, DETAILS & SPECIFICATIONS FOR ADDITIONAL INFORMATION RELATING TO THE POWER, COMMUNICATION SECURITY SERVICES ETC.
- REFER TO THE DETAILED JOINERY DRAWINGS FOR THE ACCURATE PLACEMENT OF ALL OUTLETS INCLUDING MOUNTING HEIGHTS & STRIP LIGHTING
- REFER TO THE REQUIREMENTS SPECIFIED BY 'THE CABLEMAN' FOR DETAILS RELATING TO HOME AUTOMATION, AUDIO-VISUAL, HOME ENTERTAINMENT, SECURITY, VIDEO & INTERCOM WORKS
- THESE DRAWINGS TO BE CO-ORDINATED WITH ALL CONSULTANT DRAWINGS

CEILING LEGEND

- PL 01 ○ FEATURE PENDANT LIGHT 01
- PL 02 ○ PENDANT LIGHT 02
- PL 03 ○ PENDANT LIGHT 03
- LED STRIP LIGHTING TO UNDERSIDE OF O/HEAD SHELF
- LED DOWNLIGHTS TRACK MOUNTED
- EXT 01 ○ EXTERIOR SPOTLIGHT
- CEILING HEIGHT AS NOTED
- EXTRACTION FAN. REFER TO ENGINEERS DRAWINGS
- SMOKE DETECTORS TO AS3786 HARD WIRE TO SWITCHBOARD & BATTERY BACKUP.
- BAND BEAMS WITH TIMBER CLADDING

CEILING NOTES

- CEILING HEIGHTS AND LEVELS NOMINATED ARE FINISHED LEVELS
- USE WATER RESISTANT PLASTER BOARD IN WET AREAS
- REFER TO SERVICES ENGINEERS DRAWINGS FOR ALL DETAILS RELATING TO SMOKE DETECTORS, ACCESS PANELS, MECHANICAL SUPPLY & RETURN GRILLES, SPEAKERS ETC.
- REFER TO ELECTRICAL SERVICE DRAWINGS FOR THE LOCATION OF LOW LEVEL & FLOOR MOUNTED LIGHTING.

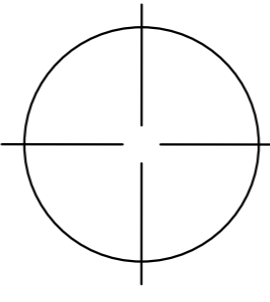
WALLS LEGEND

- ◁(W 01) EXISTING WALL WITH STUCCO FINISH
- ◁(W 02) EXISTING WALL WITH MURAL FINISH
- ◁(W 03) PROPOSED NEW STUD WALL WITH STUCCO FINISH
- ◁(W 04) MARBLE FINISH TO EXISTING EXTERNAL WALL. SEE WD500 FOR DETAIL.

PRELIMINARY DESIGN REVIEW

SAC BUILDING WORKSHOP
LEVEL 1, SUITE 8
456 ST. KILDA, MELBOURNE
VICTORIA AUSTRALIA 3004
TELEPHONE: + 61 3 9867 5188
FACSIMILE: + 61 3 9867 4078
EMAIL: inquiries@sacbw.com
www.sacbw.com

REVISION	NOTES / AMENDMENTS	DATE	CHECKED
A	ISSUE FOR PRELIMINARY REVIEW	19.02.2016	AC
	USE WRITTEN DIMENSION		
	DO NOT SCALE THESE DRAWINGS		



PROJECT MANAGER	-
STRUCTURAL ENGINEER	-
MECHANICAL & LIFTS	-
ELECTRICAL	-
HYDRAULIC & FIRE	-
QUANTITY SURVEYOR	-
BUILDING SURVEYOR	-
PLANNING AUTHORITY	YARRA CITY COUNCIL

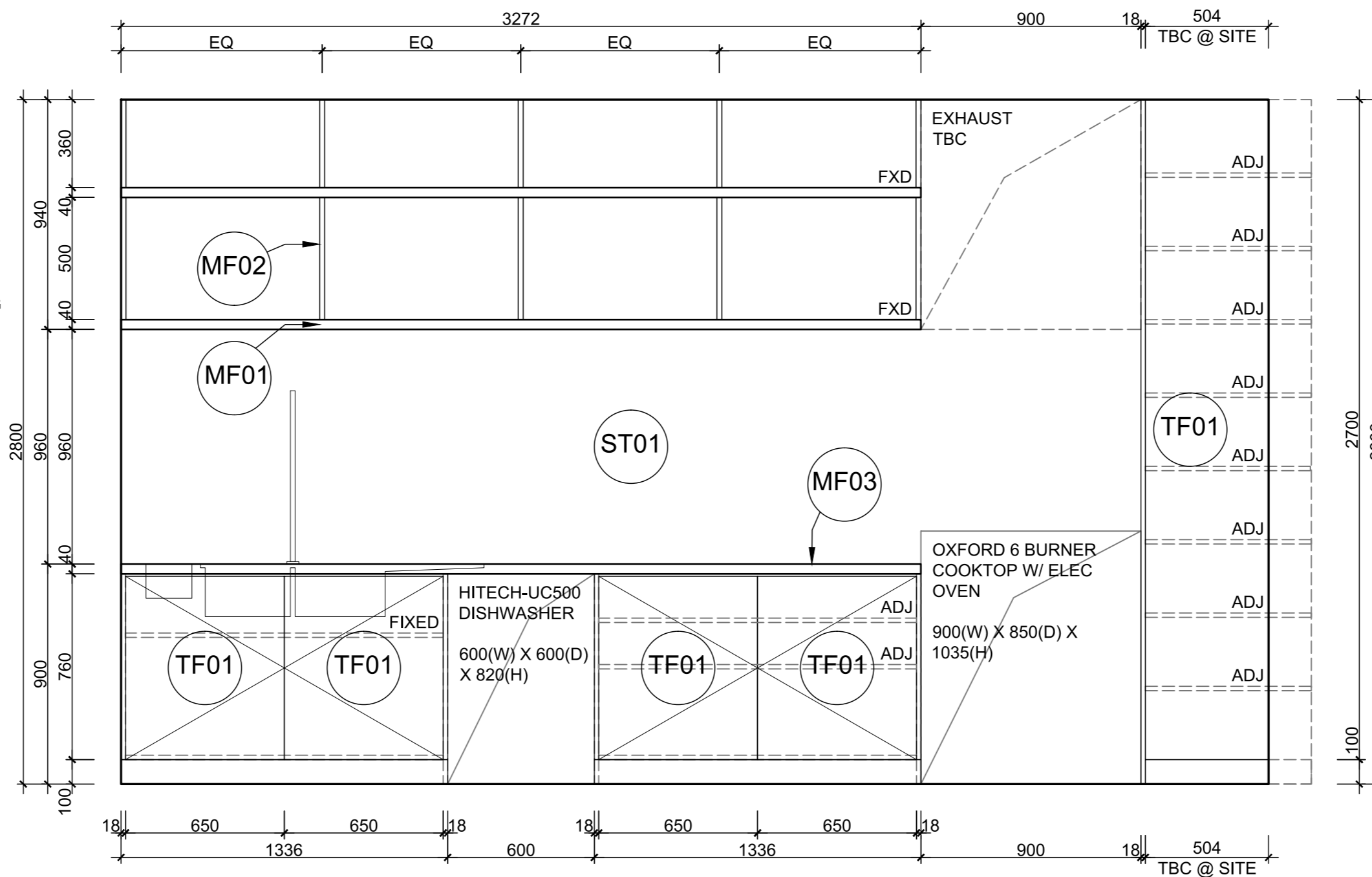
PROJECT	NORTHWOOD CAFE at 392 ST GEORGES ROAD, FITZROY NORTH
CLIENT	ANTONIO CALABRO

DRAWING			
PROPOSED INTERIOR DETAILS			
DRAWN BY	JOB NO.	SCALE	CHECKED
RK	SAC-14815	AS NOTED @ A2	AC
DATE	SHEET SIZE	EDITION	SHEET NO.
19.02.2016	A2	A	WD500

- WM1 WALL MURAL 01
'GIRLS ON VESPAS'
- WM2 WALL MURAL 02
'YELLOW FIAT'
- WM3 WALL MURAL 03
'RED SKIRT'
- WM4 WALL MURAL 04
'PERONI MAN'
- SC01 STUCCO FINISH 01
- ST01 STONE 01
'CARRARRA MARBLE'
- ST02 STONE 02
STONE BENCHTOP
- TF01 TIMBER FINISH 01
BLACK LAMINATE
(KITCHEN CUPBOARDS)
- TF02 TIMBER FINISH 02
(WINDOW BENCH
AND BENCH SEATS)
- TF03 TIMBER FINISH 03
TABLETOPS
- CF01 CONCRETE FINISH
CONCRETE FLOOR
- CF02 CONCRETE FINISH
EXPOSED CONCRETE SLAB
(AS CEILING)
- MF01 METAL FINISH 01
BLACK METAL FRAMING
- MF02 METAL FINISH 02
COPPER PIPE DETAILING
- MF03 METAL FINISH 03
STAINLESS STEEL
(BENCHTOP AND KICKBOARD)
- MF04 METAL FINISH 04
PRESSED METAL IN BLACK

LED STRIP LIGHTING
TO UNDERSIDE OF
OVERHEAD
CUPBOARDS

HAFELE MIXER TAP
WITH FLEXIBLE
EXTENSION



FRANKE HARMONY AMX110 UNDERMOUNT 1/3 SINK
188(W) X 323(D) X 140(H)

BRIENZ DOUBLE STAINLESS STEEL SINK WITH DRAINBOARD
1160(L) X 460(W) X 215(D)

01 INTERNAL ELEVATION A
WD501 1: 20 @ A2

ABBREVIATIONS

- ± DENOTES CENTRELINE
- A/C AIR CONDITIONER UNIT
- AFFL ABOVE FINISH FLOOR LEVEL
- BP BORED PIER
- CKT COOK-TOP
- COL COLUMN
- CONC CONCRETE
- COS CHECK ON SITE
- DB DISTRIBUTION BOARD
- DP DOWNPIPE
- DP-WT DOWNPIPE TO WATER TANK
- DW DISHWASHER
- FH FIRE HYDRANT
- FHR FIRE HOSE REEL
- FW FLOOR WASTE GULLY
- GI GRATED INLET
- HW HOT WATER UNIT
- L'DRY LAUNDRY / LAUNDRY CABINET
- MP METER PANEL
- MSSB MAIN SWITCHBOARD
- O/F OVERFLOW
- RC ROOF EXHAUST DISCHARGE COWL
- REF REFRIGERATION
- ROBE BUILT-IN-ROBE
- RWH RAINWATER HEADER
- RWO RAINWATER OUTLET
- SWD STORM WATER DRAINAGE
- SP SPREADER
- TBC TO BE CONFIRMED
- TD TUNDISH
- TGSI TACTILE GROUND SURFACE INDICATOR
- WM WASHING MACHINE

ELECTRICAL LEGEND

- ⏏ SINGLE GPO AT 300 AFFL TYPICAL AND AT 2000 AFFL FOR RANGEHOOD
- ⏏ DOUBLE GPO AT 300 AFFL U.N.O
- ⏏ DOUBLE GPO WITH ISOLATOR SWITCH FOR OVEN AT 600 AFFL U.N.O
- ⏏ WEATHER-PROOF DOUBLE GPO AT 300 AFFL & U.N.O
- ⏏ DOUBLE GPO AT 300 ABOVE BENCHTOP / VANITY / LAUNDRY TROUGH U.N.O
- ⏏ BROADBAND / TELEPHONE CONNECTION SOCKET AT 300 AFFL U.N.O
- ⏏ AUDIO VISUAL INTERCOM AT 1350 AFFL U.N.O
- ⏏ TELEVISION AERIAL CONNECTION SOCKET MOUNTED AT 300 AFFL U.N.O

ELECTRICAL NOTES

- REFER TO THE BUILDING SERVICES DRAWINGS, DETAILS & SPECIFICATIONS FOR ADDITIONAL INFORMATION RELATING TO THE POWER, COMMUNICATION SECURITY SERVICES ETC.
- REFER TO THE DETAILED JOINERY DRAWINGS FOR THE ACCURATE PLACEMENT OF ALL OUTLETS INCLUDING MOUNTING HEIGHTS & STRIP LIGHTING
- REFER TO THE REQUIREMENTS SPECIFIED BY "THE CABLEMAN" FOR DETAILS RELATING TO HOME AUTOMATION, AUDIO-VISUAL, HOME ENTERTAINMENT, SECURITY, VIDEO & INTERCOM WORKS
- THESE DRAWINGS TO BE CO-ORDINATED WITH ALL CONSULTANT DRAWINGS

CEILING LEGEND

- PL 01 ○ FEATURE PENDANT LIGHT 01
- PL 02 ○ PENDANT LIGHT 02
- PL 03 ○ PENDANT LIGHT 03
- LED STRIP LIGHTING TO UNDERSIDE OF O/HEAD SHELF
- LED DOWNLIGHTS TRACK MOUNTED
- EXT 01 ○ EXTERIOR SPOTLIGHT
- CEILING HEIGHT AS NOTED
- EXTRACTION FAN. REFER TO ENGINEERS DRAWINGS
- SMOKE DETECTORS TO AS3786 HARD WIRE TO SWITCHBOARD & BATTERY BACKUP.
- BAND BEAMS WITH TIMBER CLADDING

CEILING NOTES

- CEILING HEIGHTS AND LEVELS NOMINATED ARE FINISHED LEVELS
- USE WATER RESISTANT PLASTER BOARD IN WET AREAS
- REFER TO SERVICES ENGINEERS DRAWINGS FOR ALL DETAILS RELATING TO SMOKE DETECTORS, ACCESS PANELS, MECHANICAL SUPPLY & RETURN GRILLES, SPEAKERS ETC.
- REFER TO ELECTRICAL SERVICE DRAWINGS FOR THE LOCATION OF LOW LEVEL & FLOOR MOUNTED LIGHTING.

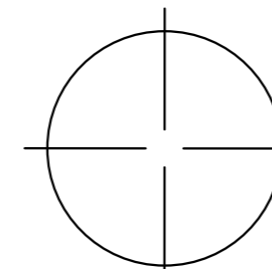
WALLS LEGEND

- ◁W 01 ▷ EXISTING WALL WITH STUCCO FINISH
- ◁W 02 ▷ EXISTING WALL WITH MURAL FINISH
- ◁W 03 ▷ PROPOSED NEW STUCCO WALL WITH STUCCO FINISH
- ◁W 04 ▷ MARBLE FINISH TO EXISTING EXTERNAL WALL. SEE WD500 FOR DETAIL.

PRELIMINARY DESIGN REVIEW

SAC BUILDING WORKSHOP
LEVEL 1, SUITE 8
456 ST. KILDA, MELBOURNE
VICTORIA AUSTRALIA 3004
TELEPHONE: + 61 3 9867 5188
FACSIMILE: + 61 3 9867 4078
EMAIL: inquiries@sacb.com
www.sacb.com

REVISION	NOTES / AMENDMENTS	DATE	CHECKED
A	ISSUE FOR PRELIMINARY REVIEW	19.02.2016	AC
	USE WRITTEN DIMENSION		
	DO NOT SCALE THESE DRAWINGS		



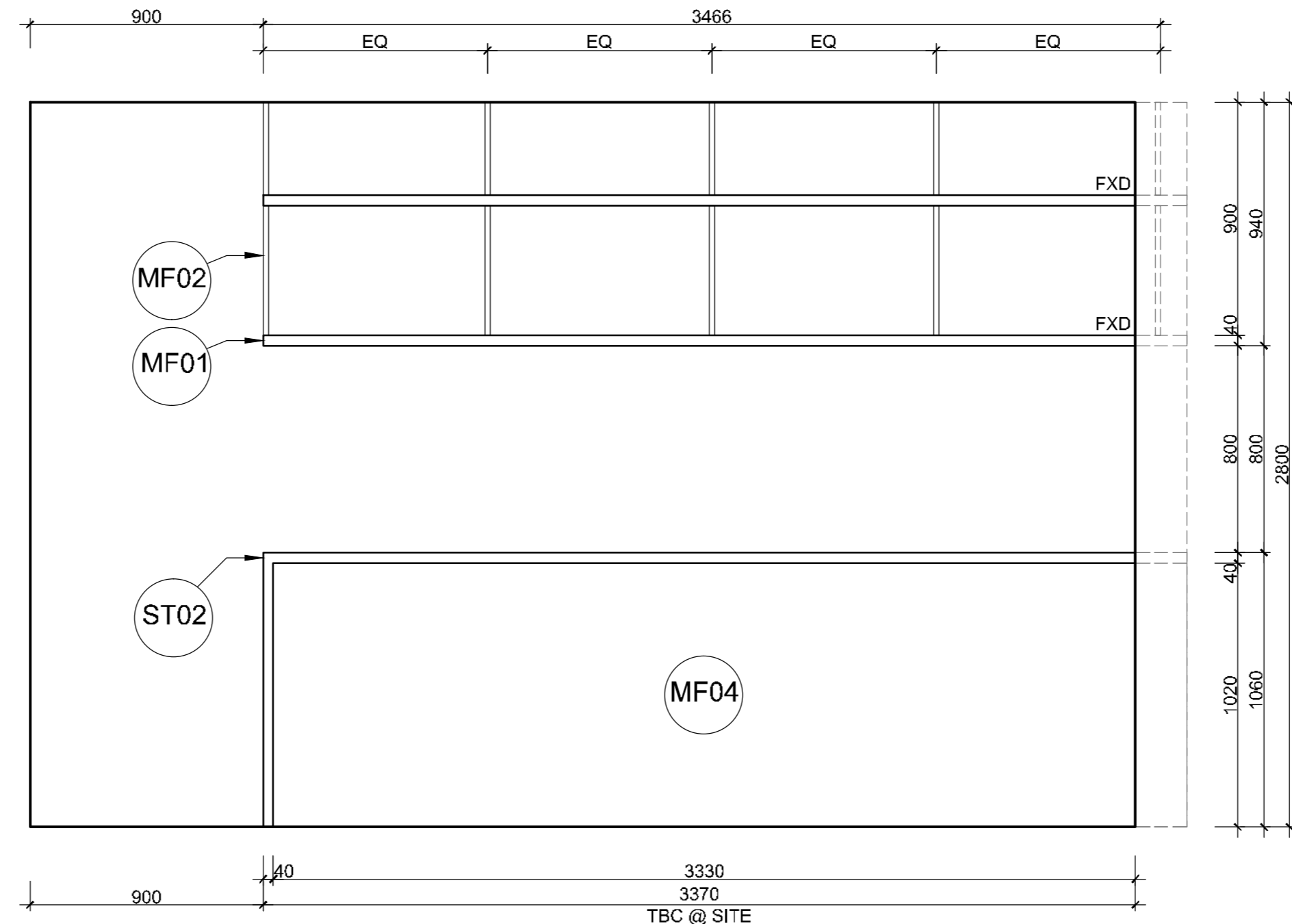
PROJECT MANAGER	-
STRUCTURAL ENGINEER	-
MECHANICAL & LIFTS	-
ELECTRICAL	-
HYDRAULIC & FIRE	-
QUANTITY SURVEYOR	-
BUILDING SURVEYOR	-
PLANNING AUTHORITY	YARRA CITY COUNCIL

PROJECT
NORTHWOOD CAFE
at 392 ST GEORGES ROAD, FITZROY NORTH

CLIENT
ANTONIO CALABRO

DRAWING			
PROPOSED INTERIOR DETAILS INTERNAL ELEVATION A			
DRAWN BY	JOB NO.	SCALE	CHECKED
RK	SAC-14815	AS NOTED @ A2	AC
DATE	SHEET SIZE	EDITION	SHEET NO.
19.02.2016	A2	A	WD501

- WM1 WALL MURAL 01
'GIRLS ON VESPAS'
- WM2 WALL MURAL 02
'YELLOW FIAT'
- WM3 WALL MURAL 03
'RED SKIRT'
- WM4 WALL MURAL 04
'PERONI MAN'
- SC01 STUCCO FINISH 01
- ST01 STONE 01
'CARRARRA MARBLE'
- ST02 STONE 02
STONE BENCHTOP
- TF01 TIMBER FINISH 01
BLACK LAMINATE
(KITCHEN CUPBOARDS)
- TF02 TIMBER FINISH 02
(WINDOW BENCH
AND BENCH SEATS)
- TF03 TIMBER FINISH 03
TABLETOPS
- CF01 CONCRETE FINISH
CONCRETE FLOOR
- CF02 CONCRETE FINISH
EXPOSED CONCRETE SLAB
(AS CEILING)
- MF01 METAL FINISH 01
BLACK METAL FRAMING
- MF02 METAL FINISH 02
COPPER PIPE DETAILING
- MF03 METAL FINISH 03
STAINLESS STEEL
(BENCHTOP AND KICKBOARD)
- MF04 METAL FINISH 04
PRESSED METAL IN BLACK



01 INTERNAL ELEVATION B
1: 20 @ A2

ABBREVIATIONS

- ± DENOTES CENTRELINE
- A/C AIR CONDITIONER UNIT
- AFFL ABOVE FINISH FLOOR LEVEL
- BP BORED PIER
- CKT COOK-TOP
- COL COLUMN
- CONC CONCRETE
- COS CHECK ON SITE
- DB DISTRIBUTION BOARD
- DP DOWNPIPE
- DP-WT DOWNPIPE TO WATER TANK
- DW DISHWASHER
- FH FIRE HYDRANT
- FHR FIRE HOSE REEL
- FW FLOOR WASTE GULLY
- GI GRATED INLET
- HW HOT WATER UNIT
- L'DRY LAUNDRY / LAUNDRY CABINET
- MP METER PANEL
- MSSB MAIN SWITCHBOARD
- O/F OVERFLOW
- RC ROOF EXHAUST DISCHARGE COWL
- REF REFRIGERATION
- ROBE BUILT-IN-ROBE
- RWH RAINWATER HEADER
- RWO RAINWATER OUTLET
- SWD STORM WATER DRAINAGE
- SP SPREADER
- TBC TO BE CONFIRMED
- TD TUNDISH
- TGSI TACTILE GROUND SURFACE INDICATOR
- WM WASHING MACHINE

ELECTRICAL LEGEND

- ⊖ SINGLE GPO AT 300 AFFL TYPICAL AND AT 2000 AFFL FOR RANGEHOOD
- ⊖ DOUBLE GPO AT 300 AFFL U.N.O
- ⊖ DOUBLE GPO WITH ISOLATOR SWITCH FOR OVEN AT 600 AFFL U.N.O
- ⊖ WEATHER-PROOF DOUBLE GPO AT 300 AFFL & U.N.O
- ⊖ DOUBLE GPO AT 300 ABOVE BENCHTOP / VANITY / LAUNDRY TROUGH U.N.O
- ⊖ BROADBAND / TELEPHONE CONNECTION SOCKET AT 300 AFFL U.N.O
- ⊖ AUDIO VISUAL INTERCOM AT 1350 AFFL U.N.O
- ⊖ TELEVISION AERIAL CONNECTION SOCKET MOUNTED AT 300 AFFL U.N.O

ELECTRICAL NOTES

- REFER TO THE BUILDING SERVICES DRAWINGS, DETAILS & SPECIFICATIONS FOR ADDITIONAL INFORMATION RELATING TO THE POWER, COMMUNICATION SECURITY SERVICES ETC.
- REFER TO THE DETAILED JOINERY DRAWINGS FOR THE ACCURATE PLACEMENT OF ALL OUTLETS INCLUDING MOUNTING HEIGHTS & STRIP LIGHTING
- REFER TO THE REQUIREMENTS SPECIFIED BY 'THE CABLEMAN' FOR DETAILS RELATING TO HOME AUTOMATION, AUDIO-VISUAL, HOME ENTERTAINMENT, SECURITY, VIDEO & INTERCOM WORKS
- THESE DRAWINGS TO BE CO-ORDINATED WITH ALL CONSULTANT DRAWINGS

CEILING LEGEND

- PL 01 ○ FEATURE PENDANT LIGHT 01
- PL 02 ○ PENDANT LIGHT 02
- PL 03 ○ PENDANT LIGHT 03
- LED STRIP LIGHTING TO UNDERSIDE OF O/HEAD SHELF
- LED DOWNLIGHTS TRACK MOUNTED
- EXT 01 ○ EXTERIOR SPOTLIGHT
- CEILING HEIGHT AS NOTED
- ⊗ EXTRACTION FAN. REFER TO ENGINEERS DRAWINGS
- SMOKE DETECTORS TO AS3786 HARD WIRE TO SWITCHBOARD & BATTERY BACKUP.
- ▨ BAND BEAMS WITH TIMBER CLADDING

CEILING NOTES

- CEILING HEIGHTS AND LEVELS NOMINATED ARE FINISHED LEVELS
- USE WATER RESISTANT PLASTER BOARD IN WET AREAS
- REFER TO SERVICES ENGINEERS DRAWINGS FOR ALL DETAILS RELATING TO SMOKE DETECTORS, ACCESS PANELS, MECHANICAL SUPPLY & RETURN GRILLES, SPEAKERS ETC.
- REFER TO ELECTRICAL SERVICE DRAWINGS FOR THE LOCATION OF LOW LEVEL & FLOOR MOUNTED LIGHTING.

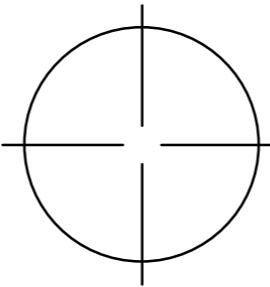
WALLS LEGEND

- ◁W 01 ▷ EXISTING WALL WITH STUCCO FINISH
- ◁W 02 ▷ EXISTING WALL WITH MURAL FINISH
- ◁W 03 ▷ PROPOSED NEW STUD WALL WITH STUCCO FINISH
- ◁W 04 ▷ MARBLE FINISH TO EXISTING EXTERNAL WALL. SEE WD500 FOR DETAIL.

PRELIMINARY DESIGN REVIEW

SAC BUILDING WORKSHOP
LEVEL 1, SUITE 8
456 ST. KILDA, MELBOURNE
VICTORIA AUSTRALIA 3004
TELEPHONE: + 61 3 9867 5188
FACSIMILE: + 61 3 9867 4078
EMAIL: inquiries@sacb.com
www.sacb.com

REVISION	NOTES / AMENDEMENTS	DATE	CHECKED
A	ISSUE FOR PRELIMINARY REVIEW	19.02.2016	AC
	USE WRITTEN DIMENSION		
	DO NOT SCALE THESE DRAWINGS		



PROJECT MANAGER	-
STRUCTURAL ENGINEER	-
MECHANICAL & LIFTS	-
ELECTRICAL	-
HYDRAULIC & FIRE	-
QUANTITY SURVEYOR	-
BUILDING SURVEYOR	-
PLANNING AUTHORITY	YARRA CITY COUNCIL

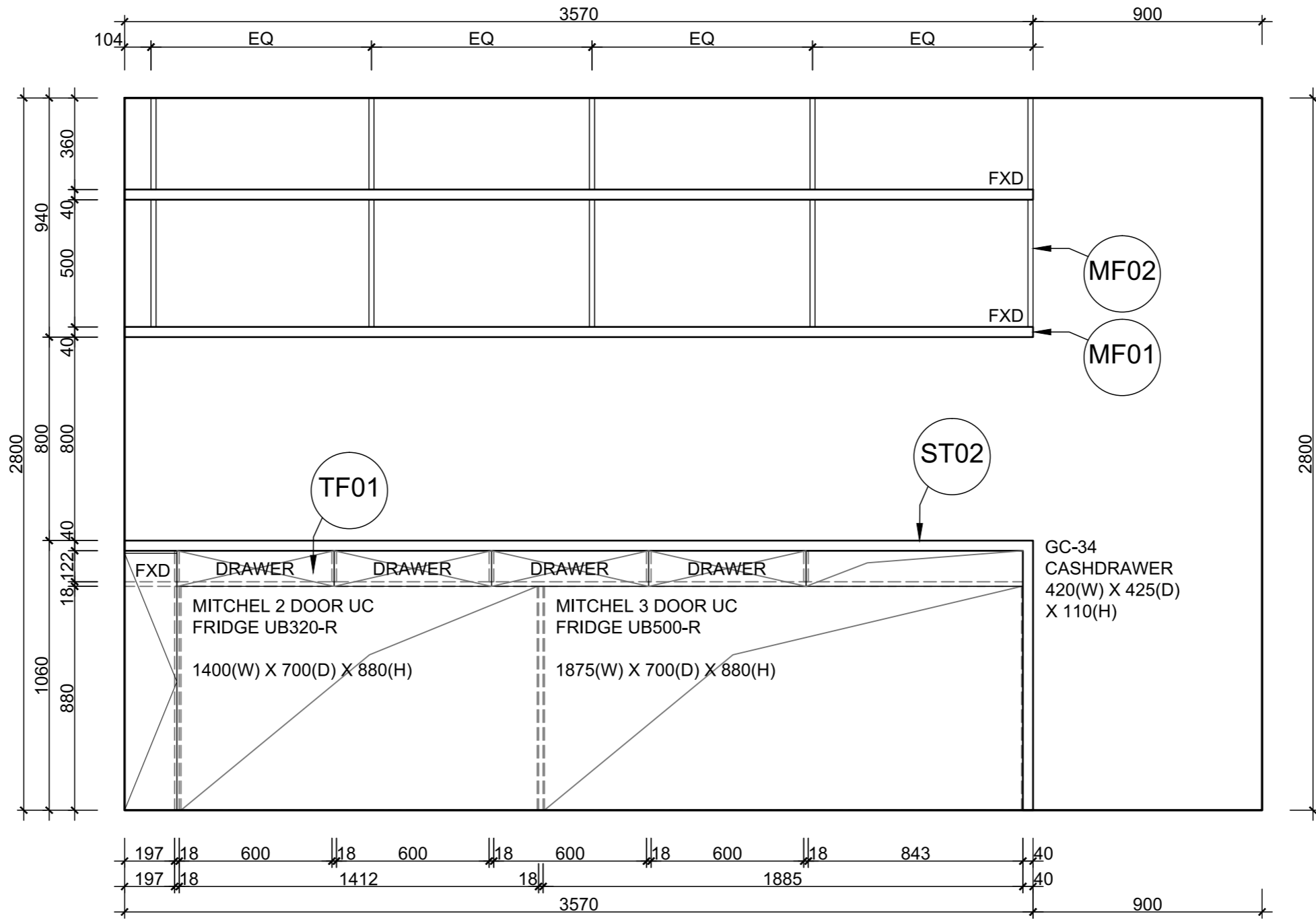
PROJECT
NORTHWOOD CAFE
at 392 ST GEORGES ROAD, FITZROY NORTH

CLIENT
ANTONIO CALABRO

DRAWING			
PROPOSED INTERIOR DETAILS INTERNAL ELEVATION B			
DRAWN BY	JOB NO.	SCALE	CHECKED
RK	SAC-14815	AS NOTED @ A2	AC
DATE	SHEET SIZE	EDITION	SHEET NO.
19.02.2016	A2	A	WD502

- WM1 WALL MURAL 01
'GIRLS ON VESPAS'
- WM2 WALL MURAL 02
'YELLOW FIAT'
- WM3 WALL MURAL 03
'RED SKIRT'
- WM4 WALL MURAL 04
'PERONI MAN'
- SC01 STUCCO FINISH 01
- ST01 STONE 01
'CARRARRA MARBLE'
- ST02 STONE 02
STONE BENCHTOP
- TF01 TIMBER FINISH 01
BLACK LAMINATE
(KITCHEN CUPBOARDS)
- TF02 TIMBER FINISH 02
(WINDOW BENCH
AND BENCH SEATS)
- TF03 TIMBER FINISH 03
TABLETOPS
- CF01 CONCRETE FINISH
CONCRETE FLOOR
- CF02 CONCRETE FINISH
EXPOSED CONCRETE SLAB
(AS CEILING)
- MF01 METAL FINISH 01
BLACK METAL FRAMING
- MF02 METAL FINISH 02
COPPER PIPE DETAILING
- MF03 METAL FINISH 03
STAINLESS STEEL
(BENCHTOP AND KICKBOARD)
- MF04 METAL FINISH 04
PRESSED METAL IN BLACK

LED STRIP LIGHTING
TO UNDERSIDE OF
OVERHEAD
CUPBOARDS



01 INTERNAL ELEVATION C
WD503 1: 20 @ A2

ABBREVIATIONS

- ± DENOTES CENTRELINE
- A/C AIR CONDITIONER UNIT
- AFFL ABOVE FINISH FLOOR LEVEL
- BP BORED PIER
- CKT COOK-TOP
- COL COLUMN
- CONC CONCRETE
- COS CHECK ON SITE
- DB DISTRIBUTION BOARD
- DP DOWNPIPE
- DP-WT DOWNPIPE TO WATER TANK
- DW DISHWASHER
- FH FIRE HYDRANT
- FHR FIRE HOSE REEL
- FW FLOOR WASTE GULLY
- GI GRATED INLET
- HW HOT WATER UNIT
- L'DRY LAUNDRY / LAUNDRY CABINET
- MP METER PANEL
- MSSB MAIN SWITCHBOARD
- O/F OVERFLOW
- RC ROOF EXHAUST DISCHARGE COWL
- REF REFRIGERATION
- ROBE BUILT-IN-ROBE
- RWH RAINWATER HEADER
- RWO RAINWATER OUTLET
- SWD STORM WATER DRAINAGE
- SP SPREADER
- TBC TO BE CONFIRMED
- TD TUNDISH
- TGSI TACTILE GROUND SURFACE INDICATOR
- WM WASHING MACHINE

ELECTRICAL LEGEND

- △ SINGLE GPO AT 300 AFFL TYPICAL AND AT 2000 AFFL FOR RANGEHOOD
- ⊕ DOUBLE GPO AT 300 AFFL U.N.O
- ⊕ DOUBLE GPO WITH ISOLATOR SWITCH FOR OVEN AT 600 AFFL U.N.O
- ⊕ WEATHER-PROOF DOUBLE GPO AT 300 AFFL & U.N.O
- ⊕ DOUBLE GPO AT 300 ABOVE BENCHTOP / VANITY / LAUNDRY TROUGH U.N.O
- ⊕ BROADBAND / TELEPHONE CONNECTION SOCKET AT 300 AFFL U.N.O
- ⊕ AUDIO VISUAL INTERCOM AT 1350 AFFL U.N.O
- ⊕ TELEVISION AERIAL CONNECTION SOCKET MOUNTED AT 300 AFFL U.N.O

ELECTRICAL NOTES

- REFER TO THE BUILDING SERVICES DRAWINGS, DETAILS & SPECIFICATIONS FOR ADDITIONAL INFORMATION RELATING TO THE POWER, COMMUNICATION SECURITY SERVICES ETC.
- REFER TO THE DETAILED JOINERY DRAWINGS FOR THE ACCURATE PLACEMENT OF ALL OUTLETS INCLUDING MOUNTING HEIGHTS & STRIP LIGHTING
- REFER TO THE REQUIREMENTS SPECIFIED BY "THE CABLEMAN" FOR DETAILS RELATING TO HOME AUTOMATION, AUDIO-VISUAL, HOME ENTERTAINMENT, SECURITY, VIDEO & INTERCOM WORKS
- THESE DRAWINGS TO BE CO-ORDINATED WITH ALL CONSULTANT DRAWINGS

CEILING LEGEND

- PL 01 ○ FEATURE PENDANT LIGHT 01
- PL 02 ○ PENDANT LIGHT 02
- PL 03 ○ PENDANT LIGHT 03
- LED STRIP LIGHTING TO UNDERSIDE OF O/HEAD SHELF
- LED DOWNLIGHTS TRACK MOUNTED
- EXT 01 ○ EXTERIOR SPOTLIGHT
- CEILING HEIGHT AS NOTED
- EXTRACTION FAN. REFER TO ENGINEERS DRAWINGS
- SMOKE DETECTORS TO AS3786 HARD WIRE TO SWITCHBOARD & BATTERY BACKUP.
- BAND BEAMS WITH TIMBER CLADDING

CEILING NOTES

- CEILING HEIGHTS AND LEVELS NOMINATED ARE FINISHED LEVELS
- USE WATER RESISTANT PLASTER BOARD IN WET AREAS
- REFER TO SERVICES ENGINEERS DRAWINGS FOR ALL DETAILS RELATING TO SMOKE DETECTORS, ACCESS PANELS, MECHANICAL SUPPLY & RETURN GRILLES, SPEAKERS ETC.
- REFER TO ELECTRICAL SERVICE DRAWINGS FOR THE LOCATION OF LOW LEVEL & FLOOR MOUNTED LIGHTING.

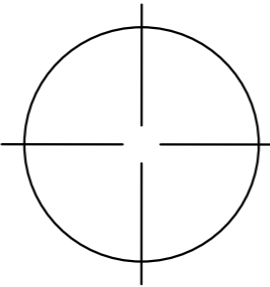
WALLS LEGEND

- ◁(W 01) EXISTING WALL WITH STUCCO FINISH
- ◁(W 02) EXISTING WALL WITH MURAL FINISH
- ◁(W 03) PROPOSED NEW STUCCO WALL WITH STUCCO FINISH
- ◁(W 04) MARBLE FINISH TO EXISTING EXTERNAL WALL. SEE WD500 FOR DETAIL.

PRELIMINARY DESIGN REVIEW

SAC BUILDING WORKSHOP
LEVEL 1, SUITE 8
456 ST. KILDA, MELBOURNE
VICTORIA AUSTRALIA 3004
TELEPHONE: + 61 3 9867 5188
FACSIMILE: + 61 3 9867 4078
EMAIL: inquiries@sacb.com
www.sacb.com

REVISION	NOTES / AMENDMENTS	DATE	CHECKED
A	ISSUE FOR PRELIMINARY REVIEW	19.02.2016	AC
	USE WRITTEN DIMENSION		
	DO NOT SCALE THESE DRAWINGS		



PROJECT MANAGER	-
STRUCTURAL ENGINEER	-
MECHANICAL & LIFTS	-
ELECTRICAL	-
HYDRAULIC & FIRE	-
QUANTITY SURVEYOR	-
BUILDING SURVEYOR	-
PLANNING AUTHORITY	YARRA CITY COUNCIL

PROJECT	NORTHWOOD CAFE at 392 ST GEORGES ROAD, FITZROY NORTH
CLIENT	ANTONIO CALABRO

DRAWING			
PROPOSED INTERIOR DETAILS INTERNAL ELEVATION C			
DRAWN BY	JOB NO.	SCALE	CHECKED
RK	SAC-14815	AS NOTED @ A2	AC
DATE	SHEET SIZE	EDITION	SHEET NO.
19.02.2016	A2	A	WD503