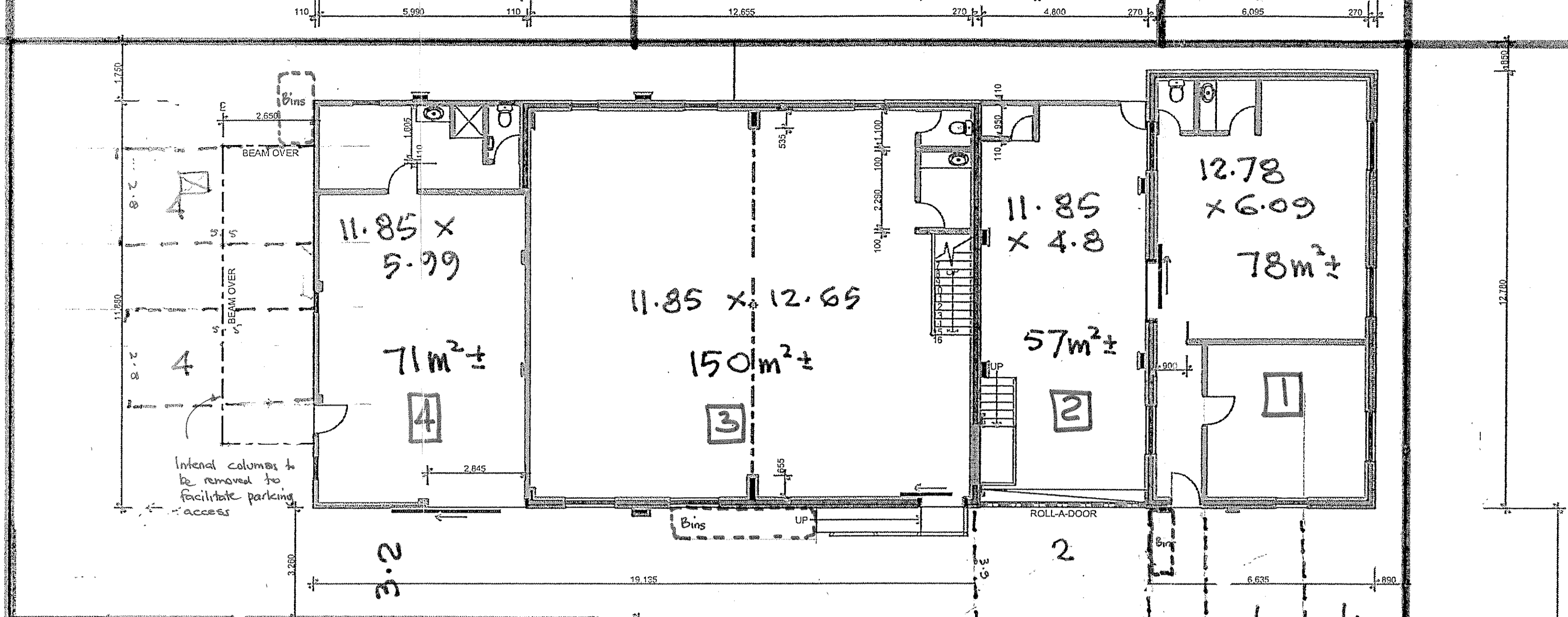
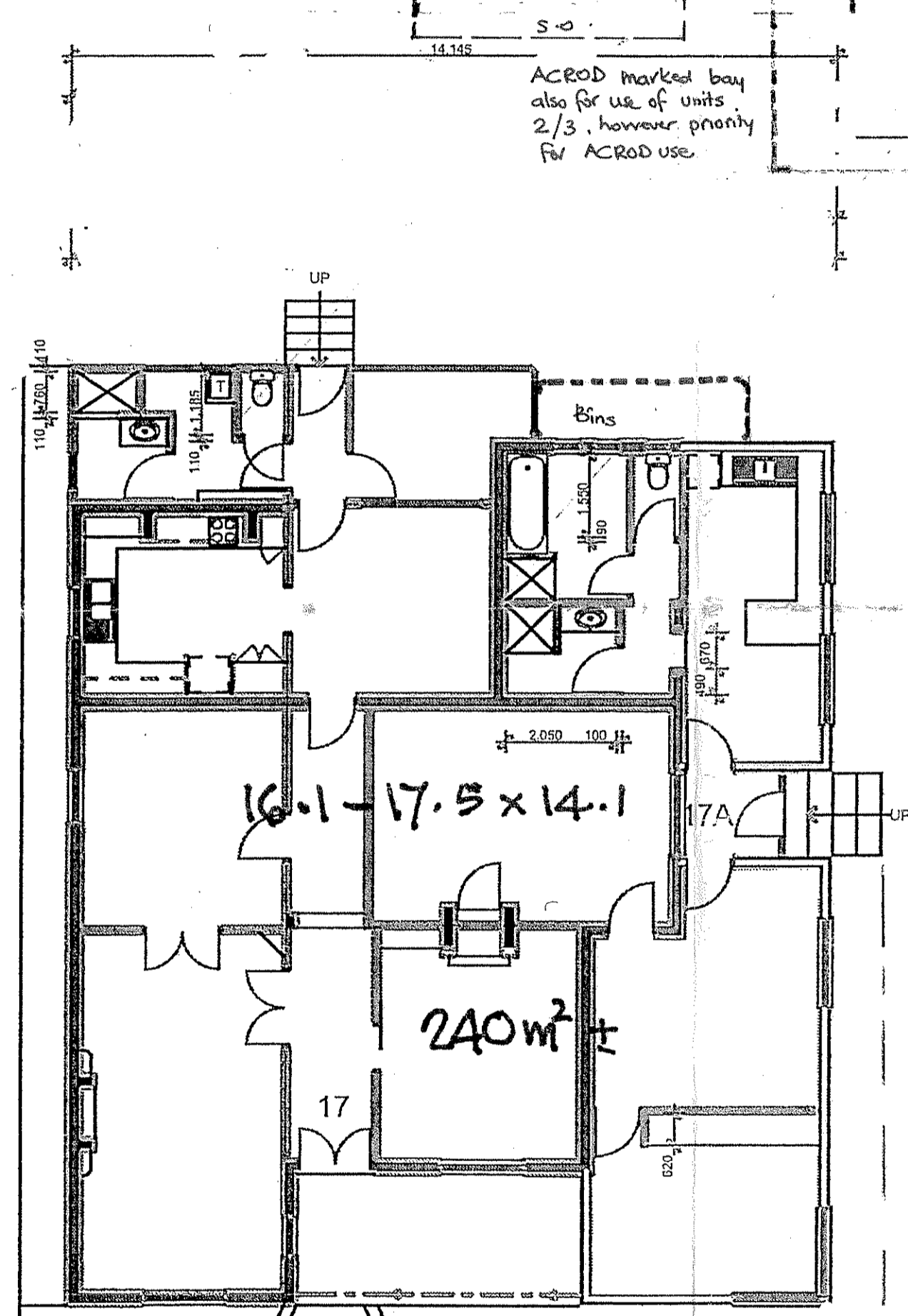


TOWN OF VINCENT
RECEIVED
22 NOV 2010



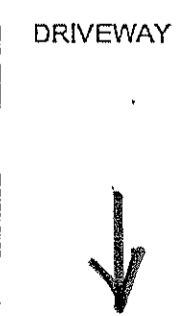
Intend columns to be removed to facilitate parking access

ACROD marked bay also for use of units 2/3, however priority for ACROD use



TOWN OF VINCENT
PLANNING & HERITAGE SERVICES SECTION
~~APPROVED FOR USE~~
IN ACCORDANCE WITH
FORM M.R.S.2 ISSUED
AND AMENDMENTS SHOWN IN RED
5 APR 2011
K/14/11
Manager, Planning, Building & Heritage Services

SITF / FLOOR PLAN



BURT STREET

N°17 Burt St. Mt Lawley.
Scale 1:100



Bin areas shown generally as discussed with officers