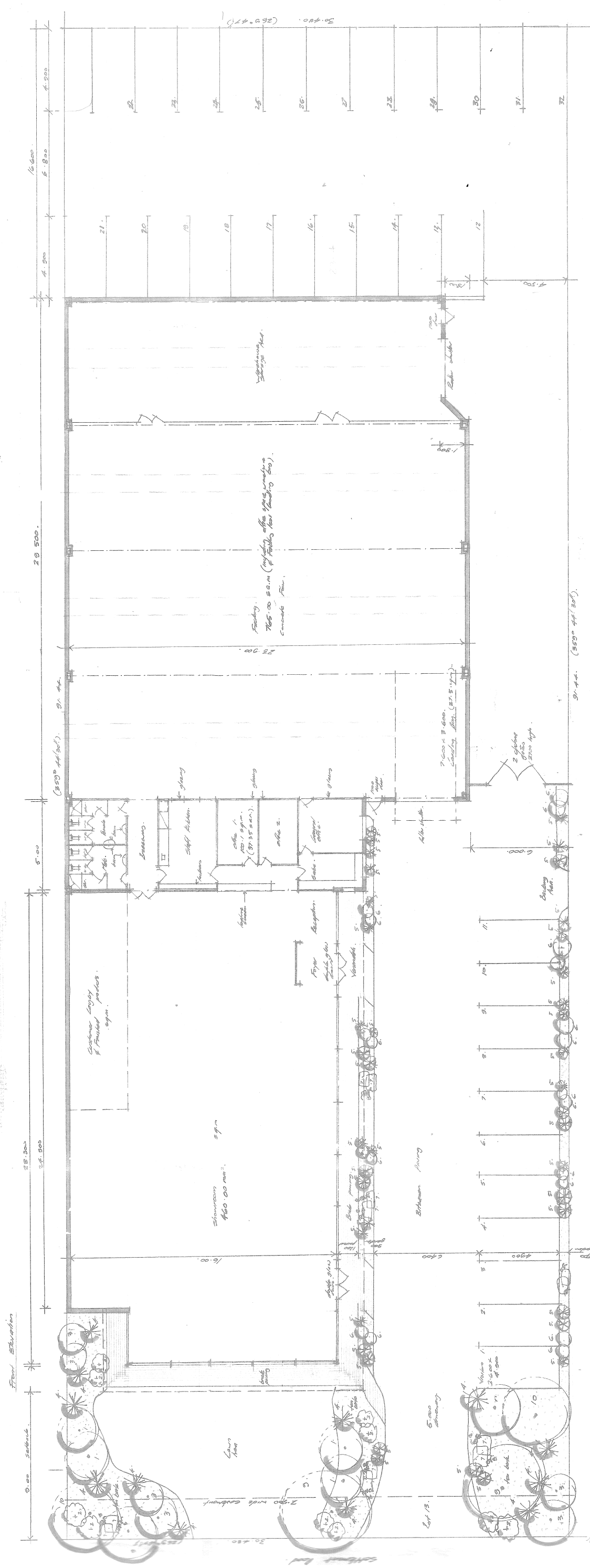


Sketch View.



**Site Details**

2787.00 sq. m. (850' x 320')  
 460.00 sq. m. (375' x 120')  
 765'00 sq. m. (375' x 200')  
 160' x 400' (including office space, machine room, etc.)  
 160' x 400' (including office space, machine room, etc.)  
 160' x 400' (including office space, machine room, etc.)

**Planting - planting schedule**

1. Eucalyptus
2. Callistemon
3. Eucalyptus
4. Callistemon
5. Eucalyptus
6. Callistemon
7. Eucalyptus
8. Callistemon
9. Eucalyptus
10. Callistemon

**Materials**

1. 200 A.  
 2. 200 A.  
 3. 200 A.  
 4. 200 A.  
 5. 200 A.  
 6. 200 A.  
 7. 200 A.  
 8. 200 A.  
 9. 200 A.  
 10. 200 A.

**Notes**

1. 200 A.  
 2. 200 A.  
 3. 200 A.  
 4. 200 A.  
 5. 200 A.  
 6. 200 A.  
 7. 200 A.  
 8. 200 A.  
 9. 200 A.  
 10. 200 A.

Proposed Showroom - Factory  
 At - Lot 13 Settlement Road Bundamba  
 For - Consul Pty Ltd (Inc. in Vic.)  
 Trading as American International Drapes  
 Architect - J. J. P. O'Connell P. Eng. A. E. A. I. A.  
 527 American Street Bundamba Q. 4022458.