

PRE-STRESSED HOLLOW CORE FLOOR PANELS PLAN

MEZZANINE FLOOR DESIGN LEVELLOAD: 12 kPa

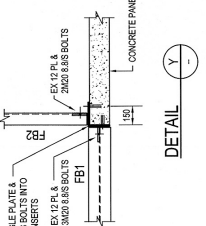
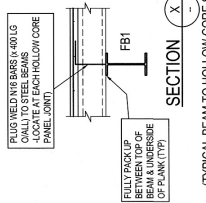
- PROVIDE 2x12 x 100 LONG BARS CENTRAL IN SLAB AT ALL RE-ENTRANT CORNERS. TYPICAL.
- DISTRIBUTION REINFORCEMENT: 12x200 TOP
- LEGEND

- WALLS OVER
- BOTTOM REINFORCEMENT
- TOP REINFORCEMENT
- INDICATES NET AREA LOCATIONS GRADE TOPPING TO SUIT REQUIRED FALLS.
- INDICATES 170 THICK SLAB

- COLUMN:
 - C1 - 340 UB 32
 - C2 - 100 x 6 SRS
 - C3 - 60 x 4 SRS
- SLAB TO BE LIFTED BY BARS
- RY - TYPICAL WHERE HOLLOW CORE PANELS ABUT WALL PANELS
- FLOOR BEAMS:
 - FB1 - 410 UB 54
 - FB2 - 300 PFC
 - FB3 - 150 x 12 EA
- ST1 - 180 PFC STAR STRINGER (SEE DETAIL ON ST)

DELTA CORE FLOOR PLANS NOTES:

- PROVIDE 2x12 x 100 LONG BARS CENTRAL IN SLAB AT ALL RE-ENTRANT CORNERS. TYPICAL.
- DISTRIBUTION REINFORCEMENT: 12x200 TOP
- APPROVED APPROVAL FOR THE HOLLOW CORE PANELS SHALL BE IN ACCORDANCE WITH THE RELEVANT STANDARDS AND SPECIFICATIONS.
- APPROVED APPROVAL FOR THE HOLLOW CORE PANELS SHALL BE IN ACCORDANCE WITH THE RELEVANT STANDARDS AND SPECIFICATIONS.
- APPROVED APPROVAL FOR THE HOLLOW CORE PANELS SHALL BE IN ACCORDANCE WITH THE RELEVANT STANDARDS AND SPECIFICATIONS.
- APPROVED APPROVAL FOR THE HOLLOW CORE PANELS SHALL BE IN ACCORDANCE WITH THE RELEVANT STANDARDS AND SPECIFICATIONS.
- APPROVED APPROVAL FOR THE HOLLOW CORE PANELS SHALL BE IN ACCORDANCE WITH THE RELEVANT STANDARDS AND SPECIFICATIONS.
- APPROVED APPROVAL FOR THE HOLLOW CORE PANELS SHALL BE IN ACCORDANCE WITH THE RELEVANT STANDARDS AND SPECIFICATIONS.
- APPROVED APPROVAL FOR THE HOLLOW CORE PANELS SHALL BE IN ACCORDANCE WITH THE RELEVANT STANDARDS AND SPECIFICATIONS.
- APPROVED APPROVAL FOR THE HOLLOW CORE PANELS SHALL BE IN ACCORDANCE WITH THE RELEVANT STANDARDS AND SPECIFICATIONS.
- APPROVED APPROVAL FOR THE HOLLOW CORE PANELS SHALL BE IN ACCORDANCE WITH THE RELEVANT STANDARDS AND SPECIFICATIONS.
- APPROVED APPROVAL FOR THE HOLLOW CORE PANELS SHALL BE IN ACCORDANCE WITH THE RELEVANT STANDARDS AND SPECIFICATIONS.
- APPROVED APPROVAL FOR THE HOLLOW CORE PANELS SHALL BE IN ACCORDANCE WITH THE RELEVANT STANDARDS AND SPECIFICATIONS.
- APPROVED APPROVAL FOR THE HOLLOW CORE PANELS SHALL BE IN ACCORDANCE WITH THE RELEVANT STANDARDS AND SPECIFICATIONS.
- APPROVED APPROVAL FOR THE HOLLOW CORE PANELS SHALL BE IN ACCORDANCE WITH THE RELEVANT STANDARDS AND SPECIFICATIONS.



REVISION	DATE	DESCRIPTION
1	14-04-11	ISSUED FOR BUILDING LICENCE CONSTRUCTION

CITY OF CARLING

Scale: 1:100, 20
Date: MAR 2011
DWG NO: 110640
SHEET: 55 of 110
PROJECT: SUSPENDED SLAB PLAN

LOCATION: LOT 56 TACOMA CIRCUIT, CANNINGVALE

CLIENT: PROPOSED OFFICE & WAREHOUSE FOR P & O ENTERPRISES

DESIGNER: COMMERCIAL DESIGN MANAGEMENT

APPROVED BY: [Signature]

DATE: 14-04-11

ISSUED FOR BUILDING LICENCE CONSTRUCTION

PROJECT NO: 110640

SCALE: 1:100, 20

DATE: MAR 2011

DWG NO: 110640

SHEET: 55 of 110

PROJECT: SUSPENDED SLAB PLAN

CLIENT: PROPOSED OFFICE & WAREHOUSE FOR P & O ENTERPRISES

DESIGNER: COMMERCIAL DESIGN MANAGEMENT

APPROVED BY: [Signature]

DATE: 14-04-11

ISSUED FOR BUILDING LICENCE CONSTRUCTION

PROJECT NO: 110640

ANDREOTTA CARDENOSA CONSULTING ENGINEERS

Suite 42, 11 Preston Street,
C/o m. w. a. 6 1 5 2
Telephone: (08) 9397 6811
Facsimile: (08) 9397 6456
Email: aace@inet.net.au
www.aace.net.au

110640 (DRAWING FILE) 110110640.dwg, 17/05/2011 1:08:46 PM, C:\110640.dwg, C:\110640.dwg, 1100, 1100, 1100, 1100