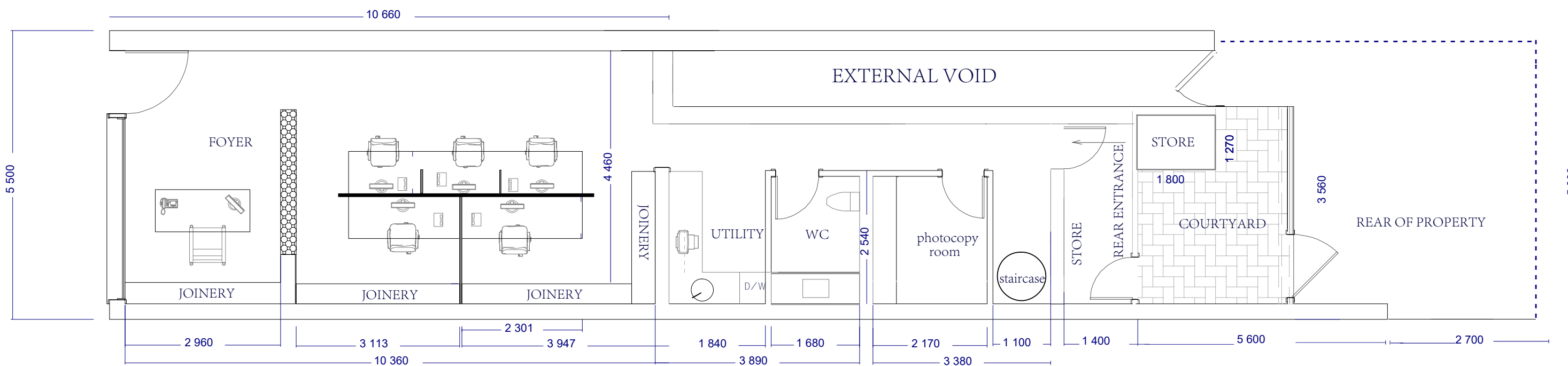
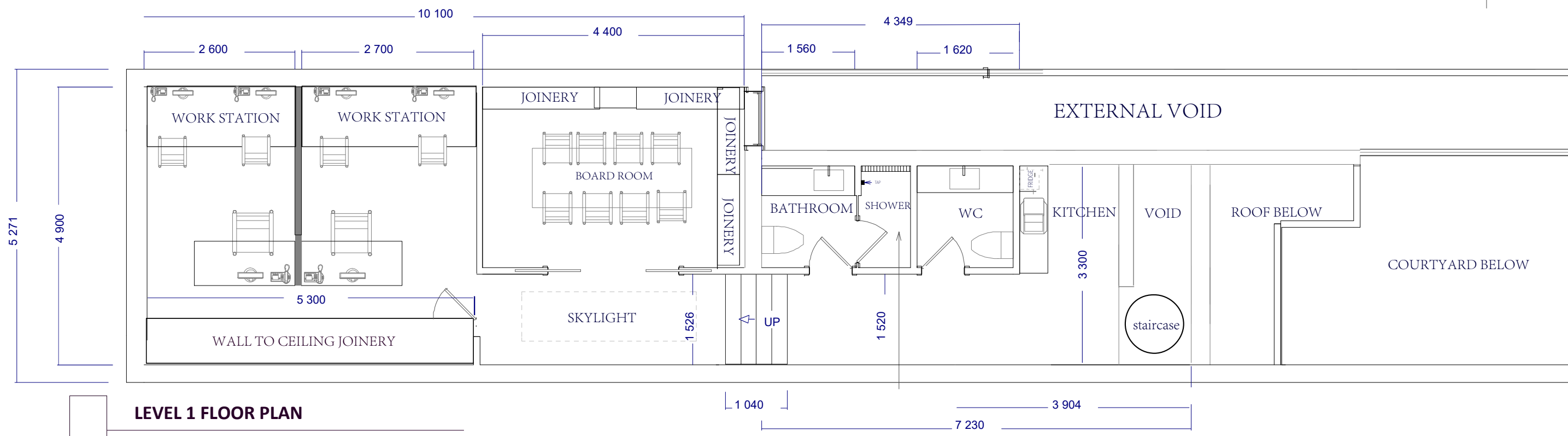
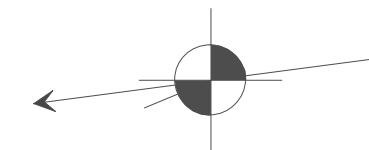


NORTH



| Schedule of Areas | |
|-----------------------------|---------------|
| Upper Level | 73.35sqm |
| Ground Level | 83.39sqm |
| Storage | 2.29sqm |
| TOTAL AREA | 159sqm |
| *all areas are approximate* | |

Location

561 MILITARY RD , MOSMAN

Plans shown are for presentation purposes only and are not part of any legal document or title. They are subject to errors, omissions, inaccuracies and should not be used as a sole and accurate reference. Interested parties should make their own enquiries using independent sources.