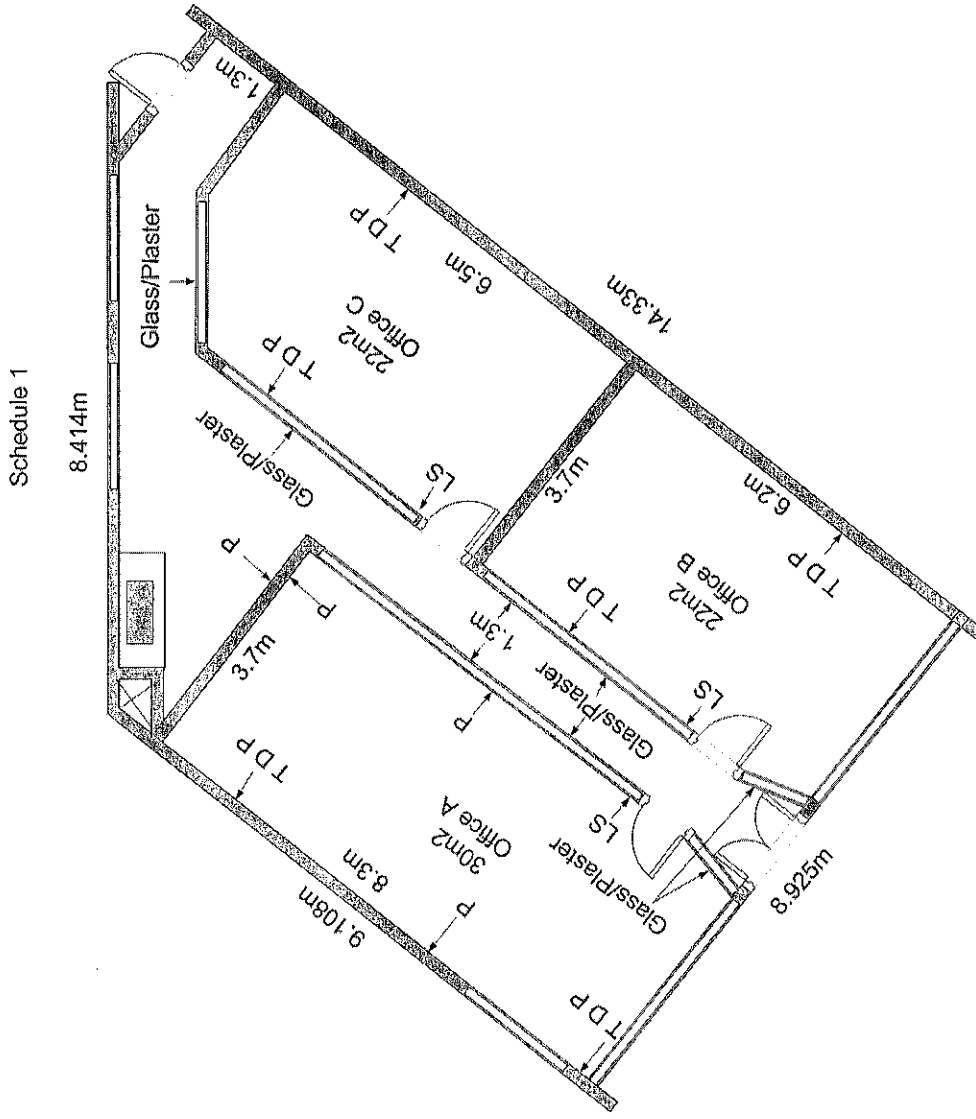


Suite 10, 26 - 28 Verdun Drive, Narre Warren, VIC, 3805



- LS - Light Switch
- P - Double Power Point
- TDP - Telephone/Data/Double Power Point

**Suite 10, 26 - 28 Verdun Drive, Narre Warren, VIC, 3805**

1. Data & Telephone point x 6
2. Double Power points x 10
3. Lighting: (To match existing lights)
  - a. 2 x Additional light in office A (3 in total)
  - b. 1 x Additional light in office B (2 in total)
  - c. 1 x Additional light in kitchen (1 in total)
  - d. 2 x Additional lights in hallway (2 in total)
  - e. 1 x Additional light near Back door (1 in total)
4. High quality acoustic grade insulation in all office walls. Bats to ceiling.
5. Separate locks fitted to offices 1 & 2 & 3.

**Measurements:**

1. Doors to office 1, office 2 and Boardroom – 870mm x 2600mm/ full height.
2. Walls approx. 1,030mm plaster high off the ground & then glass above the plaster wall at approx. height of 1,640mm.