

# FOR LEASE

COMMERCIAL  
OFFICE

RWC



**CBD CORE - Whole Fitted  
Floor - Exceptional Value  
Excellent Presentation -  
Available NOW!**

Located in the Sydney CBD financial core, surrounded by Premium and A Grade buildings. The building has excellent presentation and modern services behind its iconic Art-Deco facade.

Competitively affordable for a variety of commercial, creative, tech and financial operators seeking to be in the heart of the financial core of the city.

Positioned at the nexus of Circular Quay, Wynyard and the new Martin Place Metro.

**592m<sup>2</sup>**

Approximate strata area –  
subject to survey

# 12 O'CONNELL STREET, SYDNEY

Whole Level 1

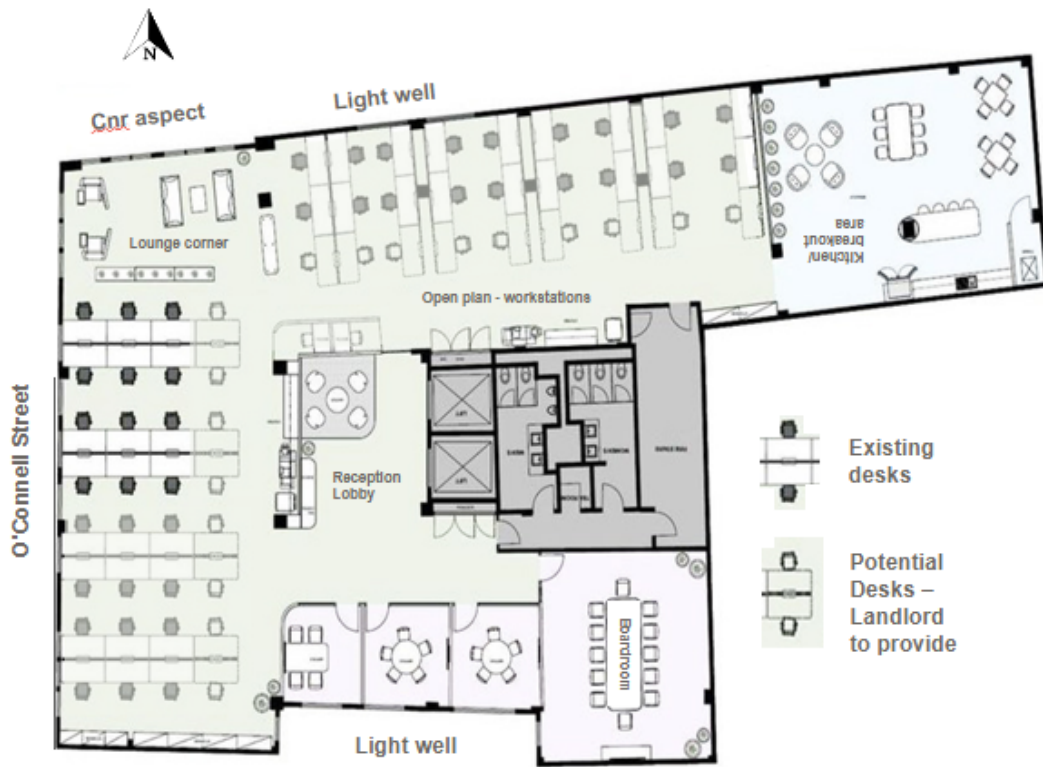


RWC

# 12 O'CONNELL STREET, SYDNEY

Whole Level 1

RWC



## FOR LEASE

- Excellent natural light over O'Connell Street
- Generous reception/showcase area
- Open plan room for 59 workstations
- 1 x 12 pax boardroom
- 3 x 4 pax meeting rooms/offices
- Generous kitchen and breakout area
- Immediate availability on a long-term lease
- Surrounded by Sydney's finest restaurants, cafe's and hotels
- Abundant Parking in immediate proximity

## CONTACT US

Julian Milne

0411 480 719

[jmilne@raywhite.com](mailto:jmilne@raywhite.com)

RWC