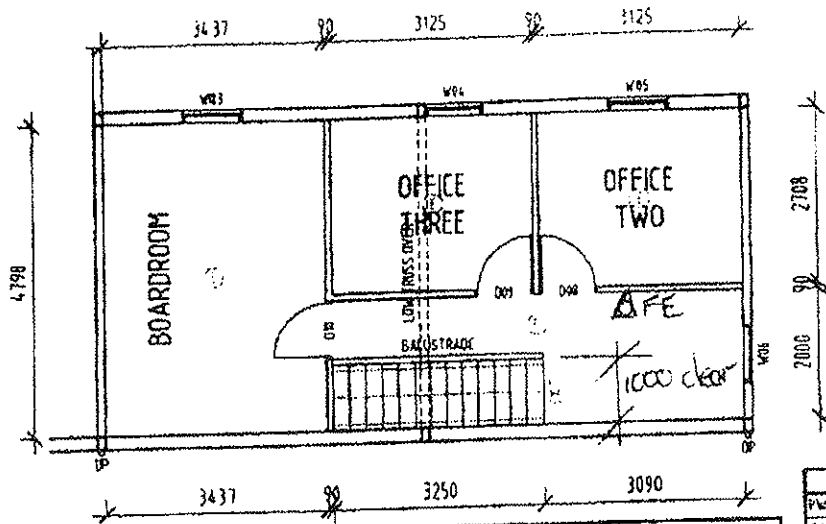


01 GROUND FLOOR PLAN  
03 SCALE 1:100



02 FIRST FLOOR PLAN  
03 SCALE 1:100

| DOOR SCHEDULE |        |       |                        |
|---------------|--------|-------|------------------------|
| NO.           | HEIGHT | WIDTH | COMMENT                |
| D03           | 2040   | 20670 | STEEL/GLASS EXIT DOORS |
| D04           | 2040   | 828   | TIMBER FLUSH PANEL     |
| D05           | 2040   | 770   | TIMBER FLUSH PANEL     |
| D06           | 2040   | 20660 | TIMBER FLUSH PANEL SD  |
| D07           | 2040   | 870   | TIMBER FLUSH PANEL     |
| D08           | 2040   | 878   | TIMBER FLUSH PANEL     |
| D09           | 2040   | 826   | TIMBER FLUSH PANEL     |
| D10           | 2040   | 826   | TIMBER FLUSH PANEL     |

**NOTES**  
 1 ALL EXIT DOORS TO OPEN IN THE DIRECTION OF EGRESS  
 2 ALL EXIT DOORS ARE TO BE OPENABLE WITH A SINGLE DOWNWARD PUSH LEVER HANDLE.

| LEGEND |   |
|--------|---|
| PWS    | METER BOX WITH SAFETY SWITCH AND RPP        |
| GAS    | GAS METER                                   |
| STP    | STO POWER POINT (x = THE NUMBER OF OUTLETS) |
| EXT    | EXTERNAL POWER POINT                        |
| WAP    | WET AREA POWER POINT                        |
| TEL    | TELEPHONE POINT                             |
| DATA   | DATA CABLE POINT                            |
| TER    | DATA CABLE TERMINAL                         |
| TV     | TELEVISION AERIAL POINT                     |
| BA     | BAYONET LIGHT FITTING                       |
| EWL    | EXTERNAL WALL MOUNTED LIGHT                 |
| EWFL   | EXTERNAL WALL MOUNTED FLOOD LIGHT           |
| LE     | LIGHT EXHAUST COMB. DUCT TO OUTSIDE AIR     |
| EL     | EMERGENCY LIGHT IN ACCORD. WITH ANZS 2293.1 |
| EXIT   | EXIT LIGHT IN ACCORD. WITH ANZS 2293.1      |
| DP     | DOWN PIPE                                   |
| NWS    | NOT WATER SERVICE                           |

